

Product datasheet for **MG208166**

Capn7 (BC095980) Mouse Tagged ORF Clone

Product data:

Product Type:	Expression Plasmids
Product Name:	Capn7 (BC095980) Mouse Tagged ORF Clone
Tag:	TurboGFP
Symbol:	Capn7
Synonyms:	AU022319; PalBH
Mammalian Cell Selection:	Neomycin
Vector:	pCMV6-AC-GFP (PS100010)
E. coli Selection:	Ampicillin (100 ug/mL)



[View online »](#)

ORF Nucleotide Sequence:

>MG208166 representing BC095980
 Red=Cloning site Blue=ORF Green=Tags(s)

TTTTGTAATACGACTCACTATAGGGCGGCCGGAATTCGTCGACTGGATCCGGTACCGAGGAGATCTGCC
 GCC**CGGATCGCC**

ATGGACGCGTCGGCGCTGGAGCGGGACGCCGTGCAGTTCGCGCGCTGGCAGTGCAGCGCGACCACGAAG
 GCCGCTACTCTGAGGCGGTGTTTTACTACAAGGAAGCTGCCAAGCTTTAATTTATGCTGAGATGGCAGG
 ATCCAGCCTAGAAAGGATCCAAGAGAAGATCAATGAGTATCTGGAAGAGTGCAAGCCCTTCACTCTGCA
 GTTCAGTCAAAGAGTACTGATCCTTTGAAATCAAAACACCAAGTTGGATCTAGAAGCTGCCATTTTCTTG
 TTACACAAGCTTTTCGATGAAGATGAAAAGGGGAATGTGGAAGATGCCATAGAATTATACAGAAGCTGT
 GGAAGTCTGTCTAAAAACCTCTTCTGAACTGCTGACAAGACTCTGCAAAATAAATTGAAACAGTTGGCT
 CGACAGGCACTAGATAGAGCAGAAGCATTGAGTGAACCTTTGACAAAGCCATTTTGCAAACCAAGTCAG
 CAAATATGAAAACAAAGACTCCTCCAGTAAGAACACACTTTCCTCTAGGACCTAATCCTTTCGTTGAAAA
 GCCTCAAGCATTATAAGTCCACAGTCATGTGATGCGCAAGGACAGAAGTACACAGCAGAAGAGATAGAA
 GTGCTCAGGACAACATCAAAAATAAATGGTGTAGAATATGTTCTTTCATGAGTGTGATCTAAGGGAAC
 GCTTTGCTTATCCAATGCCTTTTTGTGATAGGTTGGGCAAGCTTCCATTATCACCTAAACAAAAAATAC
 ATTTTCTAAATGGGTACGACCGGAAGATCTCACCAACAATCCTACAATGATATACACTGTGTCCAGTTTT
 AGCATAAAGCAGACAATAGTATCAGATTGTTCTTTGTGGCATCGTTGGCTATCAGTGCAGCGTATGAGA
 GACGATTAATAAGAAGTTAATTACCAGCATAATTTACCCCAAGAAATAGGATGGAGAACCAGAGTACAA
 TCCCTGTGAAAGTATATGGTAAAGCTTACCTCAATGGTGTCCGAGAAAGGTGATAATTGATGACCAG
 TTACCTGTTGATCACAAGGAGAATTGCTGTGTTCTTATTCCAACAATAAAAGTGAATTGTGGGTGTCAC
 TTATAGAGAAAAGCATAACATGAAAGTTATGGGAGGATATGATTTCCAGGATCCAACCTCAAATTTGATCT
 GCATGCATGACTGGGTGGATACCAGAAAGGATTGCCATGCATTCAGATAGCCAGACGTTTTCAGTAAGGAT
 AACTCATTGAGAATGCTTTATCAAAGATTTTACAAGGAGATGTCTCATCACCGCATCGACGGGAGTAA
 TGACTGAAGCTGAAGGGGAGAAGTGGGGCTGGTCCCACTCATGCCTATGCGGTTTTGGATATTAGAGA
 GTTCAAGGTTATGCCTTATAATTTCTCTTATTTGTTTTCTTGATTGATAAGATGTTACAGTATTGCAAT
 GATGGTCAGACTTTAGAGCCATCCTATGAGTGTAAACAGCCAGACTCTACCAT

AG**CGGACCG**ACGCGTACGCGGCCGCTCGAG - GFP Tag - GTTTAA

Protein Sequence:

>MG208166 representing BC095980
 Red=Cloning site Green=Tags(s)

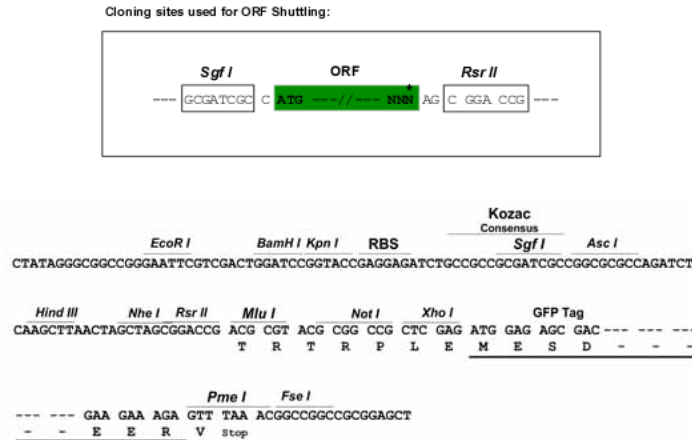
MDASALERDAVQFARLAVQRDHEGRYSEAVFYKAAQALIYAEMAGSSLERIQEKINEYLERVQALHSA
 VQSKSTDPLKSKHQLDLERAHFLVTQAFDEDEKGNVEDAIELYTEAVELCLKTSSETADKTLQNKLKQLA
 RQALDRAEALSEPLTKPFCKLKSANMKTTPPVTRTHFPLGPNPFVEKPQAFIS PQSCDAQGQKYTAEIE
 VLRRTTSKINGVEYVPFMSVDLRRERFAYPMPFCDRLGKLPSPKQKTTFSKWVRPEDLTNNPTMIYTVSSF
 SIKQTIIVSDCSFVASLAISAAYERRFNKLLITSIIYPQNKDGEPEYNPCGKYMVKLHLNGVPRKVIIDDQ
 LPVDHKGELLCSYSNNKSELWVSLIEKAYMKVMGGYDFPGSNSNIDLHALTGWIPERIAMHSDSQTFSKD
 NSFRMLYQRFHKGVDLITASTGVMTEAEGEKWGLVPTHAYAVLDIREFKVMPYNFLLFVFLIDKMLQYCN
 DGQTLPSYECKQPRLYH

SGP**TRRRLE** - GFP Tag - V

Restriction Sites:

Sgfl-RsrII

Cloning Scheme:



ACCN: BC095980

ORF Size: 1526 bp

OTI Disclaimer: The molecular sequence of this clone aligns with the gene accession number as a point of reference only. However, individual transcript sequences of the same gene can differ through naturally occurring variations (e.g. polymorphisms), each with its own valid existence. This clone is substantially in agreement with the reference, but a complete review of all prevailing variants is recommended prior to use. [More info](#)

OTI Annotation: This clone was engineered to express the complete ORF with an expression tag. Expression varies depending on the nature of the gene.

Components: The ORF clone is ion-exchange column purified and shipped in a 2D barcoded Matrix tube containing 10ug of transfection-ready, dried plasmid DNA (reconstitute with 100 ul of water).

Reconstitution Method:

1. Centrifuge at 5,000xg for 5min.
2. Carefully open the tube and add 100ul of sterile water to dissolve the DNA.
3. Close the tube and incubate for 10 minutes at room temperature.
4. Briefly vortex the tube and then do a quick spin (less than 5000xg) to concentrate the liquid at the bottom.
5. Store the suspended plasmid at -20°C. The DNA is stable for at least one year from date of shipping when stored at -20°C.

RefSeq: [BC095980](#)

RefSeq Size: 4672 bp

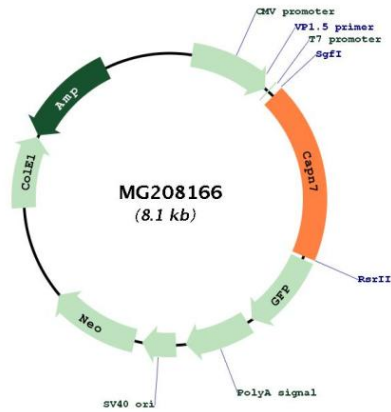
RefSeq ORF: 1526 bp

Locus ID: 12339

Cytogenetics: 14 B

Gene Summary: Calcium-regulated non-lysosomal thiol-protease.[UniProtKB/Swiss-Prot Function]

Product images:



Circular map for MG208166