

Product datasheet for **MG208162**

Hmgcs2 (BC014714) Mouse Tagged ORF Clone

Product data:

Product Type:	Expression Plasmids
Product Name:	Hmgcs2 (BC014714) Mouse Tagged ORF Clone
Tag:	TurboGFP
Symbol:	Hmgcs2
Synonyms:	mHS, 1300002P16
Mammalian Cell Selection:	Neomycin
Vector:	pCMV6-AC-GFP (PS100010)
E. coli Selection:	Ampicillin (100 ug/mL)



[View online »](#)

ORF Nucleotide Sequence:

>MG208162 representing BC014714
 Red=Cloning site Blue=ORF Green=Tags(s)

TTTTGTAATACGACTCACTATAGGGCGGCCGGAATTCGTGACTGGATCCGGTACCGAGGAGATCTGCC
 GCC**CGGATCGCC**

ATGCACGGCTTTTGGCTCCAGCGAGGCGGGTCTGCAAGTGAAGAGAGCGATGCAGAACTTCGCTCA
 CACTGCTCACCTGCTCTCAGCAGCCCAGCAGAGGTTTTCTACAATCCCTCTGCTCCCCTGGCCAAAAC
 AGATACATGGCCAAAAGATGTGGGCATCCTTGCCCTGGAGGTCTATTTTCCAGCCCAATATGTGGACCAA
 ACTGACCTGGAAGTTCAACAATGTGGAAGCAGGGAAGTATACAGTGGGCTTGGCCAGACCCGTATGG
 GCTTCTGTTCAGTCCAGGAGGACATCAACTCCCTGTGCCTGACAGTGGTACAGAGGCTGATGGAACGCAC
 AAAGCTGCCGTGGGATGCTGTGGCCGTCTGGAAGTGGGCACCGAGACCATTGACAAGTCCAAGGCT
 GTCAAAACAGTGTCTATGGAAGTGTCCAGGATTCAGGCAACACTGACATCGAGGGCATAGATACCACCA
 ACGCCTGTATGGCGGCACAGCCTCCCTCTTCAATGCTGCCAACTGGATGGAGTCCAGCTACTGGGATGG
 TCGCTATGCCCTGGTGGTCTGTGGTGCATTGCAGTCTACCCGAGTGGTAAACGCCGCCCCACAGGTGGT
 GCTGGGGCTGTGGCAATGCTGATCGGGCCAAGGCCCTCTGGTCTCGAGCAAGGGCTGAGGGGAACTC
 ACATGGAGAACCGGTACGACTTCTACAAACCAAACCTTGGCCTCAGAGTATCCACTGGTGGATGGGAAGCT
 GTCTATCCAGTGTACTCTGCGGGCCTTGGATCGATGCTATGCAGCCTACCGAAGAAGATCCAGAATCAG
 TGGAAAGCAAGCTGGAACAACAGCCTTACCCTCGATGATGTGCAGTATATGATCTTCCACACACCCCT
 TTTGCAAGATGGTCCAGAAATCCCTGGCTCGGTTGATGTTCAATGACTTCTGTGATCCAGCAGTGACAA
 ACAGAACAACCTTATACAAGGGCTTAGAGGCCTCAGGGGTCTAAAGCTGGAAGAAACCTACACCAACAAG
 GATGTAGACAAGGCTCTTTTGAAGGCCTCCCTGGACATGTTCAACCAGAAGCAAGGCTCCCTTTACC
 TCTCCACAAATAATGGGAACATGTACACCTTCCCTCTATGGCTGCCTGGCCTCACTTCTCTCTACCA
 CTCTGCCAAGAATTGGCTGGCTCCAGGATTGGAGCCTTCTCTACGGCTCAGGCTTAGCAGCAAGTTTC
 TTTTCATTCCGAGTGTCCAAGGATGCTTCCCCAGGTTCCCCCTGGAGAACTGGTGTCTAGTGTGTGAG
 ATCTGCCCAAACGTCTAGACTCCCGGAGACGCATGTCCCCTGAGGAATTCACAGAAATAATGAACCAGAG
 AGAGCAATTTTACCACAAGGTGAAGTCTCTCCACCTGGAGACACAAGCAATCTCTTCCAGGACTTGG
 TACCTTGAACGAGTGGATGAGATGCATCGCAGGAAGTATGCCCGGTGTCCCGTC

AG**CGGACCG**ACGCGTACGCGGCCGCTCGAG - GFP Tag - GTTTAA

Protein Sequence:

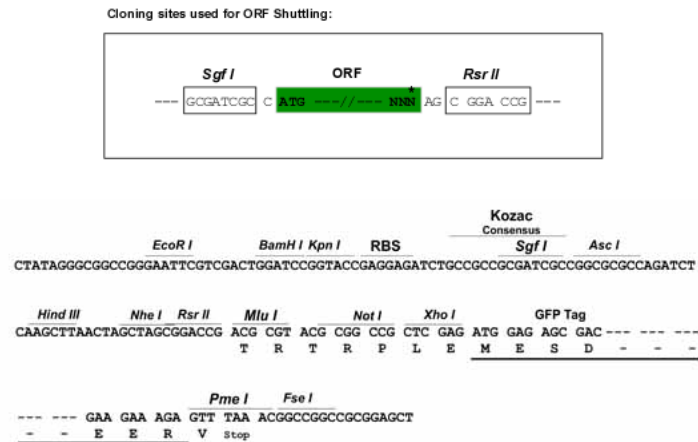
>MG208162 representing BC014714
 Red=Cloning site Green=Tags(s)

MQRLLAPARRVLQVKRAMQETSLTPAHLLSAAQRFSTIPPAPLAKTDTWPKDVGILALEVYFPAQYVDQ
 TDLEKFNVEAGKYTVGLGQTRMGFCSVQEDINSLCLTVVQRLMERTKLPWDAVGRLEVGTETIIDKSKA
 VKTVLMELFQDSGNTDIEGIDTTNACYGGTASLFNAANWMESSYWDGRYALVVCGLIAYVPSGNARPTGG
 AGAVAMLIGPKAPLVLEQGLRGTHMENAYDFYKPNLASEYPLVDGKLSIQCYLRALDRCYAAYRKKIQNQ
 WKQAGNNQPFLLDDVQYMI FHTPFCKMVQKSLARL MFNDFLSSSSDKQNNLYKGLEAFRGLKLEETYTNK
 DVDKALLKASLDMFNQTKASLYLSTNNGNMYTSSLYGCLASLLSHSAQELAGSRI GAFSYGSLAASF
 FSFRVSKDASPGSPLEKLVSSVSDLPKRLDSRRRMSPEEFTEIMNQREQFYHKVNFSPPGDTSNLFPGTW
 YLERVDEMHRRYARCPV

SGP**TRRRLE** - GFP Tag - V

Restriction Sites:

Sgfl-RsrII

Cloning Scheme:


ACCN: BC014714

ORF Size: 1526 bp

OTI Disclaimer: Due to the inherent nature of this plasmid, standard methods to replicate additional amounts of DNA in E. coli are highly likely to result in mutations and/or rearrangements. Therefore, OriGene does not guarantee the capability to replicate this plasmid DNA. Additional amounts of DNA can be purchased from OriGene with batch-specific, full-sequence verification at a reduced cost. Please contact our customer care team at custsupport@origene.com or by calling 301.340.3188 option 3 for pricing and delivery.

The molecular sequence of this clone aligns with the gene accession number as a point of reference only. However, individual transcript sequences of the same gene can differ through naturally occurring variations (e.g. polymorphisms), each with its own valid existence. This clone is substantially in agreement with the reference, but a complete review of all prevailing variants is recommended prior to use. [More info](#)

OTI Annotation: This clone was engineered to express the complete ORF with an expression tag. Expression varies depending on the nature of the gene.

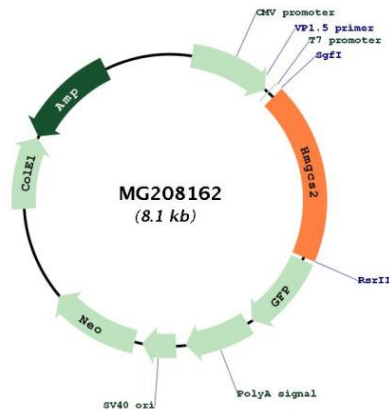
Components: The ORF clone is ion-exchange column purified and shipped in a 2D barcoded Matrix tube containing 10ug of transfection-ready, dried plasmid DNA (reconstitute with 100 ul of water).

- Reconstitution Method:**
1. Centrifuge at 5,000xg for 5min.
 2. Carefully open the tube and add 100ul of sterile water to dissolve the DNA.
 3. Close the tube and incubate for 10 minutes at room temperature.
 4. Briefly vortex the tube and then do a quick spin (less than 5000xg) to concentrate the liquid at the bottom.
 5. Store the suspended plasmid at -20°C. The DNA is stable for at least one year from date of shipping when stored at -20°C.

RefSeq: [BC014714](#), [AAH14714](#)

RefSeq Size:	2011 bp
RefSeq ORF:	1526 bp
Locus ID:	15360
Cytogenetics:	3 42.74 cM
Gene Summary:	This enzyme condenses acetyl-CoA with acetoacetyl-CoA to form HMG-CoA, which is the substrate for HMG-CoA reductase.[UniProtKB/Swiss-Prot Function]

Product images:



Circular map for MG208162