

## Product datasheet for **MG208100**

### **Api5 (NM\_007466) Mouse Tagged ORF Clone**

#### **Product data:**

Product Type:	Expression Plasmids
Product Name:	Api5 (NM_007466) Mouse Tagged ORF Clone
Tag:	TurboGFP
Symbol:	Api5
Synonyms:	AAC-11; AI196452; API-5
Mammalian Cell Selection:	Neomycin
Vector:	pCMV6-AC-GFP (PS100010)
E. coli Selection:	Ampicillin (100 ug/mL)



[View online »](#)

**ORF Nucleotide Sequence:**

>MG208100 representing NM\_007466  
 Red=Cloning site Blue=ORF Green=Tags(s)

TTTTGTAATACGACTCACTATAGGGCGGCCGGAATTCGTCGACTGGATCCGGTACCGAGGAGATCTGCC  
 GCC**CGGATCGCC**

ATGCCACGGTGGAGGAGCTGTACGCCAACTACGGCATCCTCGCCGATGCCACGGAGCAAGTGGCCAGC  
 ATAAAGATGCCTACCAAGTGATACTGGATGGCGTGAAAGGCGGCACCAAGGAAAAGCGATTAGCAGCTCA  
 GTTTATACCAAAATCTTTAAGCATTTCAGAGCTGGCTGATTCTGCTATCAATGCACAGTTAGACCTC  
 TGTGAGGATGAAGATGTGTCAATACGACGTCAAGCAATTAAGAGCTGCCTCAGTTTCCACAGGAGAAA  
 ACCTTCTAGAGTAGCAGATATACTGACCCAGCTTCTGCAGACAGATGACTCTGCAGAATTTAACCTGGT  
 GAACAATGCTCTGCTAAGTATATTTAAGATGGATGCAAAAAGAACGTTAGGTGGCTTGTTTAGCCAGATT  
 CTTCAAGGAGAAGACATTGTTAGAGAACGAGCAATTAATTCCTGTCCACAAAACCAAGACGCTCCAG  
 ATGAGGTGTTGACTAAGGAAGTGGAGAACTCATACTCACTGAGTCCAAGAAGGCTCTAGAAGACGTGAC  
 TGGTGAAGAGTTGTTTTGTTTCATGAAGATACTGTCTGGGTTGAAAAGCTTACAGACAGTGAAGTGGACGA  
 CAGCAGCTGGTGGAGCTGGTGGCGGAACAGGCTGACCTGGAGCAGGCCTCAGCCCTCAGACCCCGACT  
 GTGTGGACAGACTACTGCAGTGCACGGCAGGCTGTGCCTCTCTTCTCCAAAAATGTGCATTCTACAAG  
 ATTTGTGACGTATTTCTGTGAGCAAGTTCTCCCTAACCTCAGCACCTGACCACCCAGTGGAAAGGCCTC  
 GATATACAGCTGGAGGTATTAAGTTGTTGGCAGAGATGAGTTCATTTTGTGGTACATGGAAAACTAG  
 AAACAAATTTAAGAAAAGTGTGGATAAGTTATTTGGAGTATATGCCTCTCCCTCCAGAAGAAGCAGAAAA  
 TGGGGAGAATGCTGGTAAAGAGGAGCCCAAGCTGCAGTTCAGTTATGTGGAGTGCATTATGTACAGTTTT  
 CATCAGTTGGGGCGAAAAGTCCAGACTTCTTAACAGCCAAAACGAATGCAGAAAAACTCAAGGATTTCA  
 AAATTAGTTGTCAGTACTTTGCACGGGCTGCAGGTTTATATCAGACAACTCGCTTGGCTCCAGGG  
 TAAACAGGCGAGGCCTTAAAAACAGAGGAGAACAAGATAAAAGTTGTTGCACTGAAAAAACAACAAT  
 ATCAATGTTTTAATCAAGGATCTCTCCACATTCTCCTTCTTATAAGAGCACAGTAACATTGCTCTGGA  
 AACCTGTGCAGAAAGTTGAGATTGGGCAAAAGAGAACCAGTGAAGATAACAAGTTCAGTTTACCACCTAA  
 GAAGTCTCCAGGAGGACCAAAAAGAGATGCCAGACAGATTTATAATCCTCCGAGTGGAAAGTACAGCAGC  
 AATCTGAGCAACTTTAATTATGAGAGGAGCCTTCAGGGGAAA

**ACGCGTACGCGGCCGCTCGAG** - GFP Tag - GTTTAA

**Protein Sequence:**

>MG208100 representing NM\_007466  
 Red=Cloning site Green=Tags(s)

MPTVEELYRNYGILADATEQVGQHKDAYQVILDGVKGGTKEKRLAAQFIPKFFKHPELADSAINAQLDL  
 CEDEDVSIIRRAIKELPQFATGENLPRVADILTQLLQTDDSAEFNLVNNALLSIFKMDAKGTLGGLFSQI  
 LQGEDIVRERAIKFLSTKLKTLPEVLTKVEEELILTESKKVLEDVTGEEFVLFMKILSGLKSLQTVSGR  
 QQLVELVAEQADLEQAFSPSPDCVDRLLQCTRQAVPLFSKNVHSTRFVYFCEQVLPNLSTLTPVEGL  
 DIQLEVLKLLAEMSSFCGDMEKLETNLRKLFDKLLEYMPLPPEEAENGENAGNEEPKLFQSYVECLLYSF  
 HQLGRKLPDFLTAKLNAEKLKDFKIRLQYFARGLQVYIRQLRLALQGKTGEALKTEENKIKVVALKITNN  
 INVLIKDLFHIPPSYKSTVTLSWKPVQKVEIGQKRTSEDTSSGSPPKSPGGPKRDARQIYNPPSGKYSS  
 NLSNFNYERSLQGK

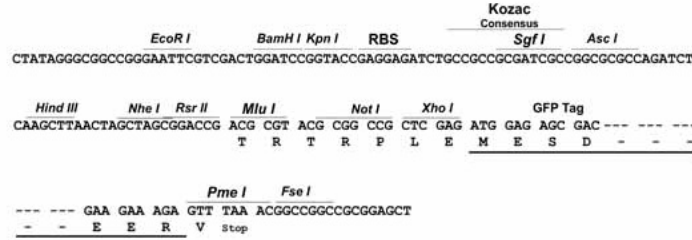
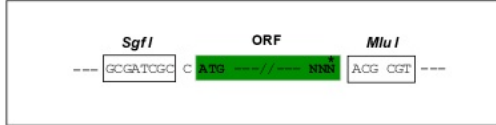
**TRTRPLE** - GFP Tag - V

**Restriction Sites:**

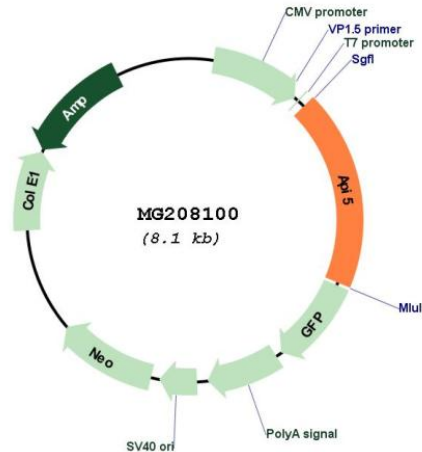
Sgfl-MluI

**Cloning Scheme:**

Cloning sites used for ORF Shutting:



## Plasmid Map:



ACCN: NM\_007466

ORF Size: 1512 bp

OTI Disclaimer: The molecular sequence of this clone aligns with the gene accession number as a point of reference only. However, individual transcript sequences of the same gene can differ through naturally occurring variations (e.g. polymorphisms), each with its own valid existence. This clone is substantially in agreement with the reference, but a complete review of all prevailing variants is recommended prior to use. [More info](#)

OTI Annotation: This clone was engineered to express the complete ORF with an expression tag. Expression varies depending on the nature of the gene.

Components: The ORF clone is ion-exchange column purified and shipped in a 2D barcoded Matrix tube containing 10ug of transfection-ready, dried plasmid DNA (reconstitute with 100 ul of water).

**Reconstitution Method:**

1. Centrifuge at 5,000xg for 5min.
2. Carefully open the tube and add 100ul of sterile water to dissolve the DNA.
3. Close the tube and incubate for 10 minutes at room temperature.
4. Briefly vortex the tube and then do a quick spin (less than 5000xg) to concentrate the liquid at the bottom.
5. Store the suspended plasmid at -20°C. The DNA is stable for at least one year from date of shipping when stored at -20°C.

**RefSeq:** [NM\\_007466.3](#), [NP\\_031492.2](#)

**RefSeq Size:** 3702 bp

**RefSeq ORF:** 1515 bp

**Locus ID:** 11800

**UniProt ID:** [O35841](#)

**Cytogenetics:** 2 E1

**Gene Summary:** Antiapoptotic factor that may have a role in protein assembly. Negatively regulates ACIN1. By binding to ACIN1, it suppresses ACIN1 cleavage from CASP3 and ACIN1-mediated DNA fragmentation. Also known to efficiently suppress E2F1-induced apoptosis (By similarity). [UniProtKB/Swiss-Prot Function]