

## Product datasheet for **MG208086**

### **Sfrs8 (BC058689) Mouse Tagged ORF Clone**

#### **Product data:**

Product Type:	Expression Plasmids
Product Name:	Sfrs8 (BC058689) Mouse Tagged ORF Clone
Tag:	TurboGFP
Symbol:	Sfrs8
Synonyms:	1190005N23Rik; 6330437E22Rik; A1197402; AW212079; Sfrs8; Srsf8; SWAP
Mammalian Cell Selection:	Neomycin
Vector:	pCMV6-AC-GFP (PS100010)
E. coli Selection:	Ampicillin (100 ug/mL)



[View online »](#)

**ORF Nucleotide Sequence:**

>MG208086 representing BC058689  
 Red=Cloning site Blue=ORF Green=Tags(s)

TTTTGTAATACGACTCACTATAGGGCGGCCGGAATTCGTCGACTGGATCCGGTACCGAGGAGATCTGCC  
 GCC**CGGATCGCC**

ATGGGCAGTCTGATGCCTTGCCCTCAGAAATGTGAACAGGACTCCTTTGATGACATCCCCACCTGTAGACC  
 ACACCTTTACACACACATGTGCACACTCAGCTGTGCCTTCCCGCAGATGCTATCTGCCTATCAGCCAT  
 CCCTCTTGCAAGTGGTAGTGCCTGTGACACTGTCTGCACATTCTGCTGCTGGTGCCTAAAAATACGTCAC  
 AATTGTACCTTTTCCCAACAGTCTCTTTTGTCCAATAAGCTTTGCCATCAAAGCCAAAGAAAATGACC  
 TCCTTCCCTTGGAGAAAAACCGTGTCAAGCTGGACGATGACAGTGAAGAGGATGAAGAAAGCAGGGAGTG  
 CCAGGAAAGCACAGCAGCGTGGCAACCCAGCCCTGCTGCCGCCCGCCCTCCGTGGCTGTAGAGGAG  
 AAGAAACCACAGCTTACCCAGGAGGAGCTGGAAGCCAAGCAAGCAAAAACAAAAGCTGGAGGACCGCCTTG  
 CTGCTGCTGCCCGGAAAAGCTAGCCCAGGCGTCCAAGGAATCAAAGGAGAAGCAGCTTCAGGCTGAACG  
 TAAAAGGAAAAGCAGCGTTGTTCTTACAACCTTAAAAATCCTCTCCAGAAGCAGAAGTTGGAAAACCT  
 GAGGAGAGTACTTTCCGGGTTGAGGACACTGGTGTGATGCCCTGTCTCTGCTGGTTGGTGGTAGAACTC  
 TGCCCATATTGGAAGGGAAGCCTCCAGAAAGGCCCTTCAAACAGATGCAGAGATCCACCAAGAGAAGAAGA  
 AAGAGAGAAAAAGAAGAAGAAGCACAAAAACGGTCTCGGACAAGGTCCCCTCTCCAAGTACCACTCG  
 TCTTCCAAGCCCAGGTCTAGATCCCCTCAAAGCAAAGCACTCCCTGCCAGTGCCTACCGGACAGTGC  
 GGCGGTCAAGGCCCTCAGCCTCCCAGGGATCTTGAGTGTGGAGCCTTGCCAGCAGCTCGGCAGTGGC  
 GGCAGCACAGCAGGAGAGTTCTCAGGCAGCCTCGGCCTCGAGCAGCTTTGACTCCTGGAGCTTTTTGAG  
 GGGAAACCTGGTAAACCGTCAAGGTCACGGTCTCGGTCCCAAGAAGGAGAGCTCACTCTCTGAGAGAC  
 GCGGGGAAGAAGGAGTGTCCCTACAGCCTACCGGATGAGCGGCAGCCCTGGGGTCAAGGAAAAGGAC  
 CCGTTCCAGAAGTCCCCACGAGAAGAAGAACAACGCGCTCACGGTCTCGCACCAAGCCAAGGCCCGG  
 TCGCAGTCAACATCCCCGAGTAAACAGGCCGACAGCGTCCCTCGCCCCACTCAGCCACTCGGCCAGCA  
 TCTCTCTGTGGAGAGCCGAGGTTCTCCAGGAACGCTCCAGGGGGTTTCTCAGGAAAAAGATGGCCA  
 GATCTCTCAGCAATCGTCTCTCTGTGACAGCAAAAATAACTCAGGATCTCATGGCCAAAGTAAGAGCA  
 ATGCTCGCAGCTTCAAAAAACCTGCAAACAGTGCATCC

**ACGCGTACGCGGCCGCTCGAG** - GFP Tag - GTTTAA

**Protein Sequence:**

>MG208086 representing BC058689  
 Red=Cloning site Green=Tags(s)

MGLMPCLRNVRNRTPLMTSPPVDHTFHTCAHSRCAFPADAICLSAIPLASGSACDVTFCWCCLKIRH  
 NCHLFPTASFAPISFAIKAKENDLLPLEKNRVKLDLDDSEEDSEESRECESTSSVANPSPAAPPVAVVEE  
 KKPQLTQEELEAKQAKQKLEDRLAAAAAREKLAQASKESKEKQLQAERKRKAALFLQTLKNPLPEAEVGL  
 EESTFGVEDTGVMPCPLLVGGRTPILEGKPPERPSNRCRDPPEEREKKKKKHKRSRTRSRSPKYHS  
 SSKPRSRSHKAKHSLPSAYRTVRRSRPSASPGILSVEPCPSSAVAAAQESSQAASASSSFDSSSFE  
 GKPGKPSRSRSPRRRAHSPERRREERSVPTAYRMSGSPGVSRKRTRSRSPHEKHKRRSRRTKAKAR  
 SQSTSPSKQAAQRSPHSAHSASISPVESRGSQERSRGVSQEKDQGISSAIVSSVQSKITQDLMAKVRA  
 MLAASKNLQTSAS

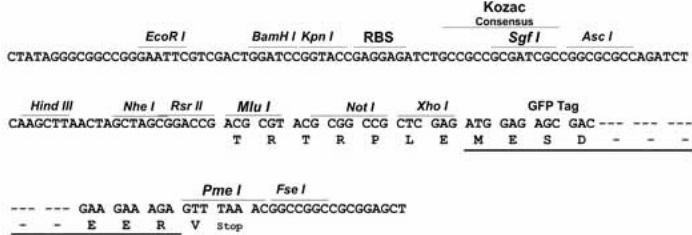
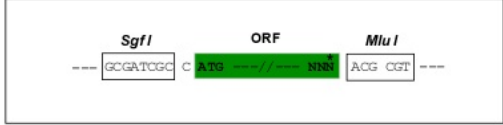
**TRTRPLE** - GFP Tag - V

**Restriction Sites:**

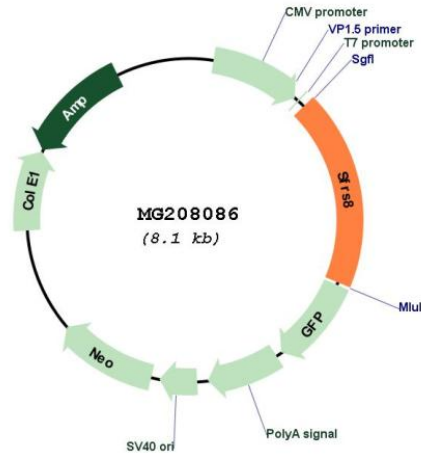
Sgfl-MluI

**Cloning Scheme:**

Cloning sites used for ORF Shutting:



Plasmid Map:



ACCN: BC058689

ORF Size: 1511 bp

OTI Disclaimer: The molecular sequence of this clone aligns with the gene accession number as a point of reference only. However, individual transcript sequences of the same gene can differ through naturally occurring variations (e.g. polymorphisms), each with its own valid existence. This clone is substantially in agreement with the reference, but a complete review of all prevailing variants is recommended prior to use. [More info](#)

OTI Annotation: This clone was engineered to express the complete ORF with an expression tag. Expression varies depending on the nature of the gene.

Components: The ORF clone is ion-exchange column purified and shipped in a 2D barcoded Matrix tube containing 10ug of transfection-ready, dried plasmid DNA (reconstitute with 100 ul of water).

**Reconstitution Method:**

1. Centrifuge at 5,000xg for 5min.
2. Carefully open the tube and add 100ul of sterile water to dissolve the DNA.
3. Close the tube and incubate for 10 minutes at room temperature.
4. Briefly vortex the tube and then do a quick spin (less than 5000xg) to concentrate the liquid at the bottom.
5. Store the suspended plasmid at -20°C. The DNA is stable for at least one year from date of shipping when stored at -20°C.

**RefSeq:** [BC058689](#), [AAH58689](#)

**RefSeq Size:** 2180 bp

**RefSeq ORF:** 1511 bp

**Locus ID:** 231769

**Cytogenetics:** 5 G1.3

**Gene Summary:** Plays a role as an alternative splicing regulator. Regulates its own expression at the level of RNA processing. Also regulates the splicing of fibronectin and CD45 genes. May act, at least in part, by interaction with other R/S-containing splicing factors. Represses the splicing of MAPT/Tau exon 10 (By similarity).[UniProtKB/Swiss-Prot Function]