

Product datasheet for **MG208069**

Klf11 (NM_178357) Mouse Tagged ORF Clone

Product data:

Product Type:	Expression Plasmids
Product Name:	Klf11 (NM_178357) Mouse Tagged ORF Clone
Tag:	TurboGFP
Symbol:	Klf11
Synonyms:	9830142A17; D12Ert427e; Tieg2; Tieg2b; Tieg3
Mammalian Cell Selection:	Neomycin
Vector:	pCMV6-AC-GFP (PS100010)
E. coli Selection:	Ampicillin (100 ug/mL)



[View online »](#)

ORF Nucleotide Sequence:

>MG208069 representing NM_178357
 Red=Cloning site Blue=ORF Green=Tags(s)

TTTTGTAATACGACTCACTATAGGGCGGCCGGAATTCGTCGACTGGATCCGGTACCGAGGAGATCTGCC
 GCC**CGATCGCC**

ATGCACTCGCCGGCTCCACCGCCCCGGCGACGGCGCGCGCTGACATCATGGACATTTGTGAGTCGA
 TCCTGGAGAGGAAGCGGCATGACAGCGAAAGTCCACATGCAGCGTCCTGGAGCAGACGGACATCGAAGC
 TGTGGAAGCTCTTGTCTGCATGAGCTCTTGGGGTCAGAGGTCCCAGATGAGACCCCTCACGCCTGTCTCT
 GACTCTGGTGACGTCACCACTGTGTGCTTATGGACACAGCTGCACCTGATCTACCAAAGGACTTCCATT
 CTTTTTCAACTCTGTGTATAACTCCTCCTCAGAGCCCAGAGCTCACGGAGCCGTCACAGGGACCCCTGT
 TCCTTCCCAAGTAGTTAACTCCAAGGATGCATGGTCACTGCCCTCCCCCATCCCCTGCTGGGGCCCC
 AGAACACTGAGCAAGAGGAACCACTGGAGCCAGCCTCAGGGTCTCCTGCAGGGCTGTGATGACCAGTG
 TGATCCGTACACCGGGAGAGTCTGCTCCTACGCGCTTCCCACTGGCCCCACTCAAGAGCAACGAGC
 ATCCGACAGCGGAGAAGGACAGGAGCGTTTGTGGACCACCTCGAAGCCTTGCAGGACACACGCTTGGCA
 AATGGCTTACTCGTCACTAATTGGTTTCTGTGACGCTTGTTCGACAAGTCCGGTGGTTGCTTCCCCA
 CTGACAAAGGTCAACAGACAGGATGGCCCGCTGCTGTTACAGACCTGCTTACCAAAGAATCCTGAAAGTGA
 CTTGTCAAGGAAAATCACCCCTCTGATTCTGTCCCTGTATCCAGTCCCCCTGCTCTTGGCAGATGATC
 CCTGTGGCTGGACAGAATGGCTTGTCTCAGCCTTTTGAACCTCCTACCCAGTTGCCTGCAGGGACTA
 TCAAGCCCATCTACCCAAGCTGCTTCAATGTCTCAGCCTGTGTTTATGGGCCACCTGTGCCTCAGGG
 AACTGTGATGCTGGTCTTGCCACAGAACACCTTCCCCAGCCTGCTGCCTGTCCATCCAGTGTATGGCC
 ATTGAAAATACCAAGCTGTTGCCCTTGCCCTGCACCAGTGTTCCTTGCCTCCAGCCAGAATCTTGCCC
 CTCAGGTAGACTTTTCCGAAGGAGGAACCTATGTTTGAACCTCCAGGATGCCGGAAGCACTACTTCAA
 AAGTTCCACCTTAAAGCTCATCTTCGCACTCACACAGGGGAGAAGCCTTTTACCTGCAGCTGGGACGGC
 TGTGACAAGAAGTTCGCAAGGTGAGTGAAGTGTCTCGCCACCGCAGGACTCACACGGGAGAGAAGAAGT
 TTGTGTCTCTGTGTGACCGCGCTTATGCGGAGTGACCACCTGACAAAGCACGCTCGTCGCCACAT
 GACAACCAAGAAGATCCCAGGCTGGCAGGCAGAGGTGGGCAAGCTGAACAGAATCACTTTGGCAGAGAGC
 CCCGGGAGCATCCTCGAACCTTCCCGGCTCTGGC

ACGCGTACGCGGCCGCTCGAG – GFP Tag – GTTTAA

Protein Sequence:

>MG208069 representing NM_178357
 Red=Cloning site Green=Tags(s)

MHSPGSTGPGDGRAADIMDICESILERKRHDSERSTCSVLEQTDIEAVEALVCMSSWGQRSQMRPLTPVS
 DSGDVTTAVLMDTAAPDLPKDFHSFSTLCITPPQSPLETSTGTPVPSQVNSKGMVMTALPPSPAGGP
 RTL SKREPLEPASGSSCRAVMTSVIRHTGESAPTRFPTGPTQEQRASDSGEGQERLLDHLEALQDTRLA
 NGLLVNLYSCQPCLHKSGSFPDCKGQQTGWPAAVQTCLPKNPESDLRKITPLISVPVSSPPVLCQMI
 PVAGQNGLFSAFLLKPPQTLPAGTIKPIIPQAASMSQPVMGPPVPQGTVMVLVLPQNTFPQAACPSSVMA
 IGNTKLLPLAPAPVFLASSQNCAPQVDFSRRRNYVCNFPGCRKTYFKSSHLKAHLRHTHTGEKPFCTSWDG
 CDKKFARSDEL SRHRRHTHTGEKKFVCPVCDRRFMRSDDLTKHARRHMTTKIPGWQAEVGLNRI LAES
 PGSILEPLPASG

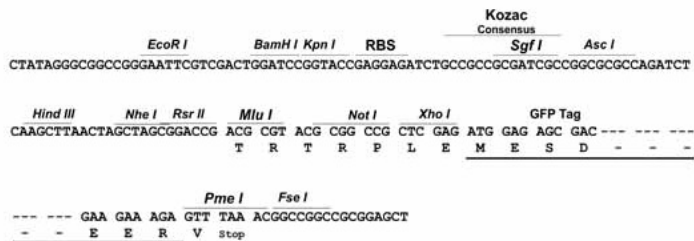
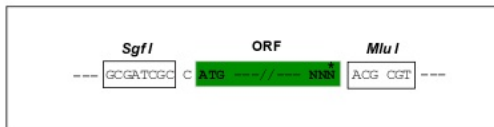
TRTRPLE – GFP Tag – V

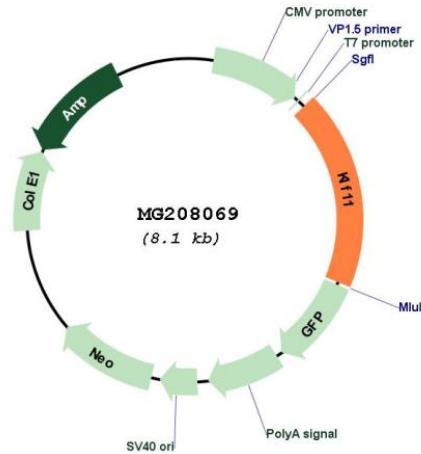
Restriction Sites:

Sgfl-MluI

Cloning Scheme:

Cloning sites used for ORF Shutting:



Plasmid Map:


ACCN: NM_178357

ORF Size: 1506 bp

OTI Disclaimer: The molecular sequence of this clone aligns with the gene accession number as a point of reference only. However, individual transcript sequences of the same gene can differ through naturally occurring variations (e.g. polymorphisms), each with its own valid existence. This clone is substantially in agreement with the reference, but a complete review of all prevailing variants is recommended prior to use. [More info](#)

OTI Annotation: This clone was engineered to express the complete ORF with an expression tag. Expression varies depending on the nature of the gene.

Components: The ORF clone is ion-exchange column purified and shipped in a 2D barcoded Matrix tube containing 10ug of transfection-ready, dried plasmid DNA (reconstitute with 100 ul of water).

Reconstitution Method:

1. Centrifuge at 5,000xg for 5min.
2. Carefully open the tube and add 100ul of sterile water to dissolve the DNA.
3. Close the tube and incubate for 10 minutes at room temperature.
4. Briefly vortex the tube and then do a quick spin (less than 5000xg) to concentrate the liquid at the bottom.
5. Store the suspended plasmid at -20°C. The DNA is stable for at least one year from date of shipping when stored at -20°C.

RefSeq: [NM_178357.3](#)

RefSeq Size: 3973 bp

RefSeq ORF: 1509 bp

Locus ID: 194655

UniProt ID: [Q8K1S5](#)

Cytogenetics: 12 8.49 cM

Gene Summary: Transcription factor. Activates the epsilon- and gamma-globin gene promoters and, to a much lower degree, the beta-globin gene and represses promoters containing SP1-like binding sites inhibiting cell growth (By similarity). Represses transcription of SMAD7 which enhances TGF-beta signaling. Induces apoptosis.[UniProtKB/Swiss-Prot Function]