

Product datasheet for **MG208063**

Bivm (NM_144558) Mouse Tagged ORF Clone

Product data:

Product Type:	Expression Plasmids
Product Name:	Bivm (NM_144558) Mouse Tagged ORF Clone
Tag:	TurboGFP
Symbol:	Bivm
Synonyms:	A1854267
Mammalian Cell Selection:	Neomycin
Vector:	pCMV6-AC-GFP (PS100010)
E. coli Selection:	Ampicillin (100 ug/mL)



[View online »](#)

ORF Nucleotide Sequence:

>MG208063 representing NM_144558
 Red=Cloning site Blue=ORF Green=Tags(s)

TTTTGTAATACGACTCACTATAGGGCGGCCGGAATTCGTCGACTGGATCCGGTACCGAGGAGATCTGCC
 GCC**CGCATCGCC**

ATGCCTAACGCCACTGAAGCTGGAAAAGCCACTGATCCTGGACATGGTGAGCACACATCTGAGAACAAGT
 CACCAGAAGAGGGTCTACAAGGTGCTGTACCATCTTTCTATACAAGTGCCTCAGAAGCACCCATAGCGCC
 CAGAGGAGATGGGCATTATCCATCGAGTTGTCCAGTGACTCACACTCGAGAGAAAATTTATGCGATCTGC
 TCAGATTATGCCTTCTCAACCAGGCAACATCAGTCTACAAAACCTCTAGCCTAACCCGCTCTGCTTGC
 TCCCTGATAACACCTCTCTTTCTGCTGGAAATACTACAAGATATATTGGAATTTCAACTAGTACATCAGA
 AATAATCTATAATGAAGAAAATAACTTGGAAAACCTGTCCACTGGCATGGGCAAGCTACCTCTTGCATGG
 GAGATTGATAAATCTGAATTTGATGGGGTACTACAAATTTGATACATAAGTCAGGCAATGTAAGAAAAC
 AATTTTCCAAGAAGAAAACGTCGGATAAAAAAGGGCGGCATCAGAGGGAGTGTCTCCACTATTCTCTCT
 TGATGATGTTAAACAACGCAAAGTGTAGACCTTAGGCGATGGTACTGCATAAGCCGACCACAGTACAAG
 ACTTCATGTGGTATCTCCTCATTGATTTCTTGTGGAAATTTCTTATACAGCATAATGGGAGCTGGGAATC
 TCCCACCTATTACCCAAGAAGAGGCATTACATATTTTGGGCTTCAACCCCCATTTGAAGATATTAGGTT
 TGGCCCTTCACTGGAAATACAACACTCATGAGATGGTTAGACAAATTAATGACCACTTTCATGTGAAA
 GGATGCTCTTATGTTCTATAAGCCCCATGGGAAGAACAAAACAGCTGGAGAACTGCTCCAGGGGCCCT
 TATCAAAGTTGACCCGAGGATTGAAAGATGAGTCACTGGCTTATATCTATCATTGCCAAAATCACTATTT
 CTGTCCAATTGGCTTTGAAGCAACCCCTGTGAAAGCTAATAAAGCATTACAGCAGGGGGCCCTCTTTCA
 CAAGAAGTAGAATACTGGATTTAATTGGAGAGTCAAGTAGAAAACATCCTGCCATTCACTGTAAAAGAT
 GGCAGATATTGCTACTGATCTAAACACTCAAAATCCAGAATTTCTAGATATCCGACATCTAGAGAGGGG
 GCTGCAGTTCGGAAAACAAAGAAGTTGGAGGAAATTTGCATTGCATCATAGCATTCCAGAGACTCAGT
 TGGCAGAGATTTGGCTTTTGGAACTTTCCATTTGGAACATTACACAAGAATCACAAACATCCCACACATG
 TCCCGGAATTGCCAAATCTGAGAGTGAGGACAATATCTTAAGAAGCAGCATGGGCGCCTGGGAGGTC
 CTTCAAGTGCAGTTCATCAGGACTCGGCATGGAAGAACATGTCTAGCATCCACGAGAGGAGGAACAGT
 GGCTACCACAGCTTTAGAGATTATAATGGCAATGAC

ACGCGTACGCGGCCGCTCGAG – GFP Tag – GTTTAA

Protein Sequence:

>MG208063 representing NM_144558
 Red=Cloning site Green=Tags(s)

MPNATEAGKATDPGHGEHTSENKSPEEGLQGAVPSFYTSASEAPIAPRGDGHYPSSCPVHTREKIYAIC
 SDYAFLNQATSVYKTPSLTRSACLDPDNTSLSAGNTTRYIGISTSTSEIIYNEENLNLSTGMGKLPLAW
 EIDKSEFDGVTTNLIHKSNGVKKQFSKKKTSDDKGRHQRECLHYSPLDDVKQRKVLDRRWYICISRPQYK
 TSCGISSLISCNFLYSIMGAGNLPPIITQEEALHILGFQPPFEDIRFGPFTGNNTLMRWFQINDHFHVK
 GCSYVLYKPHGKNKTAGETAPGALSKLTRGLKDESLAYIYHCQNHYFCPIGFEATPVKANKAFSRGPLSS
 QEVEYWILIGESSRKHPAIIHCKRWADIVDLNTQNPFLDIRHLERGLQFRKTKKVGNNLHCIIAFQRLS
 WQRFQFWNFPFGTITQESQHPHTVPGIAKSESEDNISKKQHGRGRLGRSFSASFHQDSAWKNMSSIHERNS
 GYHSFRDYNGND

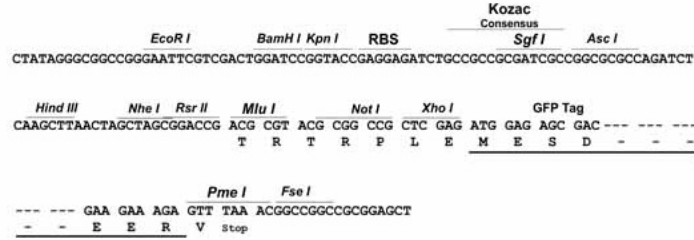
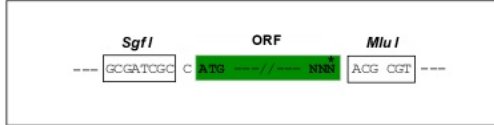
TRTRPLE – GFP Tag – V

Restriction Sites:

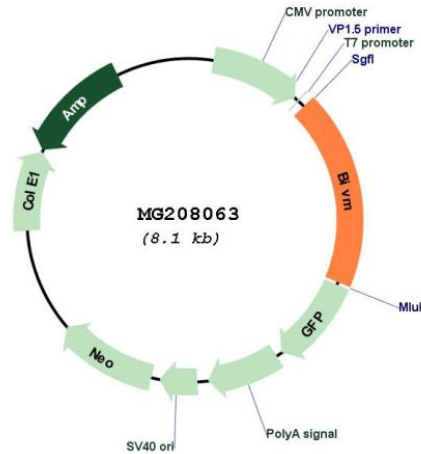
Sgfl-MluI

Cloning Scheme:

Cloning sites used for ORF Shutting:



Plasmid Map:



ACCN: NM_144558

ORF Size: 1506 bp

OTI Disclaimer: The molecular sequence of this clone aligns with the gene accession number as a point of reference only. However, individual transcript sequences of the same gene can differ through naturally occurring variations (e.g. polymorphisms), each with its own valid existence. This clone is substantially in agreement with the reference, but a complete review of all prevailing variants is recommended prior to use. [More info](#)

OTI Annotation: This clone was engineered to express the complete ORF with an expression tag. Expression varies depending on the nature of the gene.

Components: The ORF clone is ion-exchange column purified and shipped in a 2D barcoded Matrix tube containing 10ug of transfection-ready, dried plasmid DNA (reconstitute with 100 ul of water).

Reconstitution Method:

1. Centrifuge at 5,000xg for 5min.
2. Carefully open the tube and add 100ul of sterile water to dissolve the DNA.
3. Close the tube and incubate for 10 minutes at room temperature.
4. Briefly vortex the tube and then do a quick spin (less than 5000xg) to concentrate the liquid at the bottom.
5. Store the suspended plasmid at -20°C. The DNA is stable for at least one year from date of shipping when stored at -20°C.

RefSeq: [NM_144558.4](#), [NP_653141.3](#)

RefSeq Size: 3571 bp

RefSeq ORF: 1509 bp

Locus ID: 246229

UniProt ID: [Q8CBX9](#)

Cytogenetics: 1 C1.1