

## Product datasheet for **MG208059**

### **Sf3a3 (BC009141) Mouse Tagged ORF Clone**

#### **Product data:**

Product Type:	Expression Plasmids
Product Name:	Sf3a3 (BC009141) Mouse Tagged ORF Clone
Tag:	TurboGFP
Symbol:	Sf3a3
Synonyms:	60kDa; 4930512K19Rik
Mammalian Cell Selection:	Neomycin
Vector:	pCMV6-AC-GFP (PS100010)
E. coli Selection:	Ampicillin (100 ug/mL)



[View online »](#)

**ORF Nucleotide Sequence:**

>MG208059 representing BC009141  
 Red=Cloning site Blue=ORF Green=Tags(s)

TTTTGTAATACGACTCACTATAGGGCGGCCGGAATTCGTCGACTGGATCCGGTACCGAGGAGATCTGCC  
 GCC**CGGATCGCC**

ATGGAGACAATTTTAGAGCAGCAACGGCGCTATCATGAGGAGAAGGAACGGCTTATGGATGTTATGGCCA  
 AAGAGATGCTTACGAAGAAGTCCACGCTTCGGGACCAGATCAATTCCGATCACCGCACTCGGCCATGCA  
 AGATAGGTACATGGAGGTCAGTGGGAACCTGAGGGATTTGTATGATGATAAGGACGGACTCGGGAAGGAG  
 GAGCTCAATGCTATCTCAGGACCAACGAGTTCGCTGAATTCTATAACAGACTCAAGCAGATAAAGGAAT  
 TCCATCGGAAGCACCCAAATGAGATCTGTGTGCCAATGTCAGTGGAAATTTGAGGAGCTGTGAAGGCTCG  
 AGAGAATCCAAGTGAAGAGGCACAAAACCTGGTGGAGTTCACAGATGAAGAGGGATATGGTCGCTACCTT  
 GATCTCCATGACTGCTACCTCAAATACATTAACCTGAAGGCATCTGAGAAGCTGGATTACATCACATAACC  
 TGTCATCTTTGACCAGTTGTTTGACATTCCTAAAGAAAAGAAAGATGCAGAGTACAAAAGATACCTGGA  
 GATGCTGTGGAGTACCTACAGGATTACACAGATAGAGTGAAGCCCTTCAGGATCAGAAGGAGCTCTTT  
 GGAAGATTGAGACCGACTTTGAGAAGAAGTGGGATAATGGCACCTTTCCTGGATGGCCGAAAGAGACAA  
 GCAGCGCCTGACTCACGCGGGAGCCCATCTTGATCTCTCCGCATTCTCCTCTGGGAGGAGTTGGCATC  
 CCTGGGTCTGGATAGGTTGAAATCTGCACTATTGGCATTGGGCCTGAAGTGTGGCGGGACCTAGAAGAA  
 CGAGCTCAGAGGCTCTCAGCACCAAGGAAAGTCTTTGGAGTCACTCGACACTTCTCTGTTTGCCAAAA  
 ATCCCAAGTCAAAGGGCACAAAAAGAGACTGAGAGGAACAAAGACATTGCTTTCCTGGAAGCCAGAT  
 CTATGAATACGTGGAGATTCTCGGGAACAGCGACAGCTCACTCATGAAAATGTTGAGCGCAAGCAAGCC  
 AGGACAGGCGAGGAGCGGGAGGAGGAGGAGGAGGAGCAGATCAGCGAGAGCGAAAGTGAAGCAGAGAGA  
 ATGAGATCAATTTACAACCCCAAGAACCTGCCGCTGGGCTGGGACGGCAAGCCCATCCCCTACTGGCTGTA  
 CAAGCTCCACGGCCTGAATATCAACTACAACCTGTGAGATCTGTGGAACTACACCTACCGAGGGCCCAAG  
 GCCTTCCAGCGGCACTTTGCGGAGTGGCGTCATGCTCATGGCATGAGGTGTTTGGGCATCCCAAACACTG  
 CCCACTTTGCAAATGTGACACAGATTGAAGATGCTGTCTCCTTGTGGCCAAAGCTGAAACTGCAGAAGGC  
 TTCAGAACGGTGGCAGCCTGACACCGAGGAAGAATATGAAGACTCCAGTGGAAATGTTGTGAACAAGAAG  
 ACATACGAGGATCTGAAAAGACAAGGGCTGCTC

**ACGCGTACGCGGGCGCTCGAG** - GFP Tag - GTTTAA

**Protein Sequence:**

>MG208059 representing BC009141  
 Red=Cloning site Green=Tags(s)

METILEQRRYHEEKERLMDVMAKEMLTKKSTLRDQINSDHRTRAMQDRYMEVSGNLRDL YDDKDLRKE  
 ELNAISGPNEFAEFYNRLKQIKIEFHRKHPNEICVPMSVEFEELLKARENPSSEEAQNLVEFTDEEGYGRYL  
 DLHDCYLKYINLKASEKLDYITYLSIFDQLFDIPKERKNAEYKRYLEMLLEYLQDYTDVVKPLQDQNELF  
 GKIQTFEKKWDNGTFPGWPKETSSALTHAGAHLDLSAFSSWEELASLGLDRLKSALLALGLKCGGTLEE  
 RAQRLFSTKGKSLESLDTSLFAKNPKSKGTRDTERNKDIAFLEAQIYEYVEILGEQRQLTHENVQRKQA  
 RTGEEREEEEEEQISESESEDEENEIIYNPNLPLGWDGKPIPYWLYKLHGLNINYNCEICGNITYRGP  
 AFQRHFAEWRHAHGMRCGLGIPNTAHFANVTQIEDAVSLWAKLKLQKASERWQPDTEEEYEDSSGNVNVNK  
 TYEDLKRQGLL

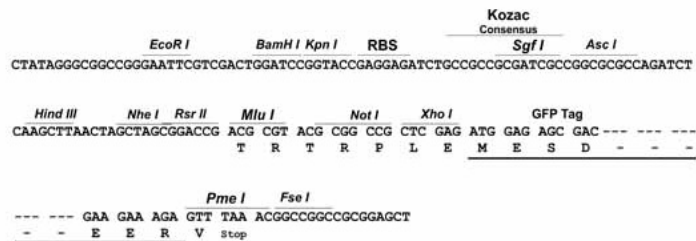
**TRTRPLE** - GFP Tag - V

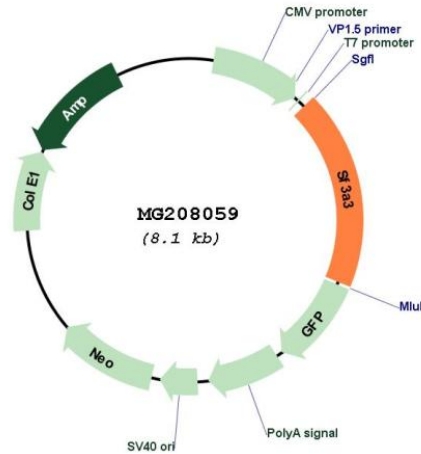
**Restriction Sites:**

Sgfl-MluI

Cloning Scheme:

Cloning sites used for ORF Shutting:



**Plasmid Map:**


**ACCN:** BC009141

**ORF Size:** 1505 bp

**OTI Disclaimer:** The molecular sequence of this clone aligns with the gene accession number as a point of reference only. However, individual transcript sequences of the same gene can differ through naturally occurring variations (e.g. polymorphisms), each with its own valid existence. This clone is substantially in agreement with the reference, but a complete review of all prevailing variants is recommended prior to use. [More info](#)

**OTI Annotation:** This clone was engineered to express the complete ORF with an expression tag. Expression varies depending on the nature of the gene.

**Components:** The ORF clone is ion-exchange column purified and shipped in a 2D barcoded Matrix tube containing 10ug of transfection-ready, dried plasmid DNA (reconstitute with 100 ul of water).

**Reconstitution Method:**

1. Centrifuge at 5,000xg for 5min.
2. Carefully open the tube and add 100ul of sterile water to dissolve the DNA.
3. Close the tube and incubate for 10 minutes at room temperature.
4. Briefly vortex the tube and then do a quick spin (less than 5000xg) to concentrate the liquid at the bottom.
5. Store the suspended plasmid at -20°C. The DNA is stable for at least one year from date of shipping when stored at -20°C.

**RefSeq:** [BC009141](#), [AAH09141](#)

**RefSeq Size:** 1710 bp

**RefSeq ORF:** 1505 bp

**Locus ID:** 75062

**Cytogenetics:** 4 D2.2

**Gene Summary:** Involved in pre-mRNA splicing as a component of the splicing factor SF3A complex that contributes to the assembly of the 17S U2 snRNP, and the subsequent assembly of the pre-spliceosome 'E' complex and the pre-catalytic spliceosome 'A' complex. Involved in pre-mRNA splicing as a component of pre-catalytic spliceosome 'B' complexes.[UniProtKB/Swiss-Prot Function]