

Product datasheet for **MG208030**

Parp8 (BC021315) Mouse Tagged ORF Clone

Product data:

Product Type:	Expression Plasmids
Product Name:	Parp8 (BC021315) Mouse Tagged ORF Clone
Tag:	TurboGFP
Symbol:	Parp8
Synonyms:	2810430O08Rik; ARTD16; D13Ertd275e
Mammalian Cell Selection:	Neomycin
Vector:	pCMV6-AC-GFP (PS100010)
E. coli Selection:	Ampicillin (100 ug/mL)



[View online »](#)

ORF Nucleotide Sequence:

>MG208030 representing BC021315
 Red=Cloning site Blue=ORF Green=Tags(s)

TTTTGTAATACGACTCACTATAGGGCGGCCGGAATTCGTCGACTGGATCCGGTACCGAGGAGATCTGCC
 GCC**CGGATCGCC**

ATGTCCACCATTAATTCGCACAACTTTTGGGCCGGCCCTGCCCTCAGCCGGCAAGCAAGAGGACTGCC
 TCACACTGAAGTCCCATAAGTTATTGACTCGATCTTGTCTGGAGACCCAGATGTGAGCACAACACCAA
 CTTGAAGCCCCACAACTGCTAAGCAGATCTTACTCCAGTAATCTCAGAATGGAAGATTATATGCCTG
 AAAAATCACAAATTGCTCAGCAAGTCTTACTCCAGTGCCCAAGACATCGAAAAAGGAGCATTTCAAGG
 AACCCAACGCAGAGGGCAGGAGGCTCTCGCTTACCTCAGGGCTTATCGGTATTTAACACCATCATCGTC
 TTCTTCCAGCCTCTACAAATGGTGCAAAAAGCATTCCAATCCGAGACCGCGCTTCTGGTGCAGACC
 ATTGAGTTTGTGAGCAGCGGATCCCTGTACTGAATGAATATTGTGTGGTGTGTGATGAACCACACGTGT
 TTCAAATGGCCCATGCTTAGGCCACAGTATGTGAGCGAGAGCTGTGTGTGTTTCTTTCAAACCT
 GGGAGTGATGAATGAAGTGCAGCAGATCGCTACCGGAGCTCAGGTGGTAGATCTGCTTGTGCCATG
 TGTAGATCTCGTGGAAATCTCCTAGAAAAGTTGTCATTTTTGAGCCATATCCTTCTGTGGTAGATCCTA
 ATGACCCTCAGATGTTAGCCTTCAATCCCAGGAAGAAGAACTATGATCGTGAATGAAAGCTCTGGACAG
 CATAACTTCCATCAGAGAAATGACACAGGCACCCTATCTGAAATCAAGAAGCAGATGGATAAACAGGAC
 CCCCTTGCTCATCCACTTCTGCAATGGGTCACTCAAGTAATAGGTACACATTTGTGAAACTGCCAGTCA
 ACAGGCAACTGAAGTTCATGCACACGCCACACCAGTTCCTCCTCAGCAGCCCACCAGCCAAAGATC
 CAACTTACAGAGCCCAAGAAGCTTTCGGGAGCACCTTCGCATTTTCATGGCTCTCACATTGAAAAGTGG
 CACTCTATCCTGAGGAATGGTCTGGTCTGGTGCCTTAACACCGCTCTGCAGCTCCACGGTGAATGTACG
 GAAGTGGGATCTATCTTAGCCCGATGCCAGCATATCATTGGTTACTCAGGGATGAACAAGAAGCAGAA
 GGTGTCAAGCAAGGACGAGCCAGCTTCCAGTAGTAAAAGCAGCAATGCATCACAGTCTCAGAAAAAAGGA
 CAGCAATCCCAGTTCCTGCAAAAGCCGTAACCTGAAATGCATAGCCTTATGTGAAGTGATCACGTCACCTG
 ACCTGCACAAACATGGCGAGATATGGGTTGTCCCGAACACGGATCATGTCTGTACAAGATTCTTTTTTGT
 TTATGAAGATGGCCAGGTGGGAGATGCCAATATCAACACACAAGAAGGAGGTATTACAAAAGAGATACTC
 CGTGTGATTGGTAATCAGACTGCGACTGGT

AG**CGGACCG**ACGCGTACGCGGCCGCTCGAG – GFP Tag – GTTAA

Protein Sequence:

>MG208030 representing BC021315
 Red=Cloning site Green=Tags(s)

MSTIKSHKLLGRPCPSAGKQEDCLTLKSHKLLTRSCSGDPRCEHNTNLKPHKLLSRYSNNLRMEELYGL
 KNHKLLSKSYSSAPKTSKMEHFKEPNAEGRRLSLTSLIGILTPSSSSSQPPTNGAKSIPIRDGRFLVQT
 IEFAEQRIQIPVLNEYCVVCDPEHVFQNGPMLRPTVCERELCVFAFQTLGVMNEAADEIATGAQVVDLLVSM
 CRSALESPRKVVIFEPYPSVVDPNPQMLAFNPRKKNYDRVMKALDSITSIREMTQAPYLEIKKQMDKQD
 PLAHPLLQWVISSNRSHIVKLPVNRQLKFMHTPHQFLLLSSPPAKESNFRAAKKLFSTFAFHGSHIENW
 HSILRNGLVVASNTRLQLHGAMYSGIYLSMSSI SFGYSGMNNKQKVSSKDEPASSKSSNASQSQKKG
 QQSQFLQSRNLKCIALCEVITSPDLHKHGEIWWVPNTDHSVTRFFVYEDGQVGDANINTQEGGIHKEIL
 RVIGNQTATG

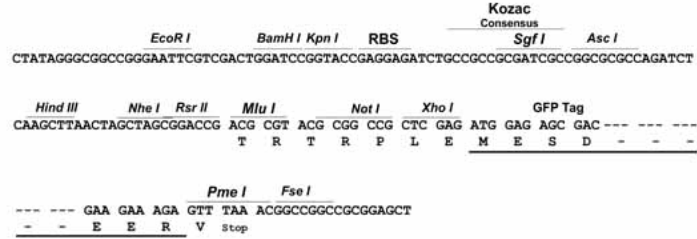
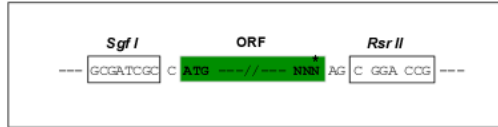
SGP**TRRRLE** – GFP Tag – V

Restriction Sites:

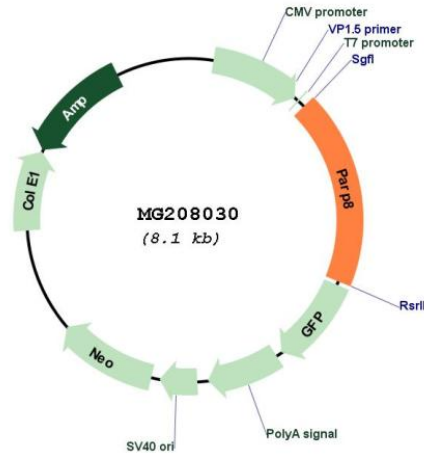
Sgfl-RsrII

Cloning Scheme:

Cloning sites used for ORF Shuttling:



Plasmid Map:



ACCN: BC021315

ORF Size: 1502 bp

OTI Disclaimer: The molecular sequence of this clone aligns with the gene accession number as a point of reference only. However, individual transcript sequences of the same gene can differ through naturally occurring variations (e.g. polymorphisms), each with its own valid existence. This clone is substantially in agreement with the reference, but a complete review of all prevailing variants is recommended prior to use. [More info](#)

OTI Annotation: This clone was engineered to express the complete ORF with an expression tag. Expression varies depending on the nature of the gene.

Components: The ORF clone is ion-exchange column purified and shipped in a 2D barcoded Matrix tube containing 10ug of transfection-ready, dried plasmid DNA (reconstitute with 100 ul of water).

Reconstitution Method:

1. Centrifuge at 5,000xg for 5min.
2. Carefully open the tube and add 100ul of sterile water to dissolve the DNA.
3. Close the tube and incubate for 10 minutes at room temperature.
4. Briefly vortex the tube and then do a quick spin (less than 5000xg) to concentrate the liquid at the bottom.
5. Store the suspended plasmid at -20°C. The DNA is stable for at least one year from date of shipping when stored at -20°C.

RefSeq: [BC021315](#), [AAH21315](#)

RefSeq Size: 2143 bp

RefSeq ORF: 1502 bp

Locus ID: 52552

Cytogenetics: 13 65.32 cM

Gene Summary: Mono-ADP-ribosyltransferase that mediates mono-ADP-ribosylation of target proteins. [UniProtKB/Swiss-Prot Function]