

## Product datasheet for **MG208015**

### Parp8 (BC021881) Mouse Tagged ORF Clone

#### Product data:

Product Type:	Expression Plasmids
Product Name:	Parp8 (BC021881) Mouse Tagged ORF Clone
Tag:	TurboGFP
Symbol:	Parp8
Synonyms:	2810430O08Rik; ARTD16; D13Ertd275e
Mammalian Cell Selection:	Neomycin
Vector:	pCMV6-AC-GFP (PS100010)
E. coli Selection:	Ampicillin (100 ug/mL)



[View online »](#)

**ORF Nucleotide Sequence:**

>MG208015 representing BC021881  
 Red=Cloning site Blue=ORF Green=Tags(s)

TTTTGTAATACGACTCACTATAGGGCGGCCGGAATTCGTCGACTGGATCCGGTACCGAGGAGATCTGCC  
 GCC**CGATCGCC**

ATGTCCACCATTAATTCGCACAACTTTTGGGCCGGCCCTGCCCTCAGCCGGCAAGCAAGAGGACTGCC  
 TCACACTGAAGTCCCATAAGTTATTGACTCGATCTTGTCTGGAGACCCAGATGTGAGCACAACACCAA  
 CTTGAAGCCCCACAACTGCTAAGCAGATCTTACTCCAGTAATCTCAGAATGGAAGATTATATGCCTG  
 AAAAATCACAAATTGCTCAGCAAGTCTTACTCCAGTGCCCAAGACATCGAAAAAGGAGCATTTCAAGG  
 AACCCACGCAGAGGGCAGGAGGCTCTCGCTTACCTCAGGGCTTATCGGTATTTAACACCATCATCGTC  
 TTCTTCCAGCCTCTACAAATGGTGCAAAAAGCATTCCAATCCGAGACCGCGCTTCTGGTGCAGACC  
 ATTGAGTTTGTGAGCAGCGGATCCCTGTACTGAATGAATATTGTGTGGTGTGTGATGAACCACACGTGT  
 TTCAAATGGCCCATGCTTAGGCCACAGTATGTGAGCGAGAGCTGTGTGTGTTTCTTTCAAACCTT  
 GGGAGTGATGAATGAAGTCCGACGAGATCGCTACCGGAGCTCAGGTGGTAGATCTGCTTGTGCCATG  
 TGTAGATCTCGTTGGAATCTCCTAGAAAAGTTGTCATTTTTGAGCCATATCCTTCTGTGGTAGATCCTA  
 ATGACCCTCAGATGTTAGCCTTCAATCCCAGGAAGAAGAACTATGATCGTGAATGAAAGCTCTGGACAG  
 CATAACTTCCATCAGAGAAATGACACAGGCACCCTATCTGAAATCAAGAAGCAGATGGATAAACAGGAC  
 CCCCTTGCTCATCCACTTCTGCAATGGGTCACTCAAGTAATAGGTACACATTTGTGAAACTGCCAGTCA  
 ACAGGCAACTGAAGTTCATGCACACGCCACACCAGTTCCTCCTCAGCAGCCCACCAGCCAAAGATC  
 CAACTTCAGAGCCGCAAGAAGCTTTCGGGAGCACCTTCGCATTTTCATGGCTCTCACATTGAAAAGTGG  
 CACTCTATCCTGAGGAATGGTCTGGTCTGGTGCCTTAACACGCGTCTGCAGCTCCACGGTGAATGTACG  
 GAAGTGGGATCTATCTTAGCCGATGTCAGCATATCATTGGTTACTCAGGGATGAACAAGAAGTACG  
 GGTGTCAAGCAAGGACGAGCCAGCTTCCAGTAGTAAAAGCAGCAATGCATCACAGTCTCAGAAAAAAGGA  
 CAGCAATCCCAGTTCCTGCAAGCCGTAACCTGAAATGCATAGCCTTATGTGAAGTGATCACGTCACCTG  
 ACCTGCACAAACATGGCGAGATATGGGTTGTCCCGAACACGGATCATGTCTGTACAAGATTCTTTTTTGT  
 TTATGAAGATGGCCAGGTGGGAGATGCCAATATCAACACACAAGAAGGAGGTATTACAAAGAGATACTC  
 CGTGTGATTGTAATCAGACTGCGACTGGT

AG**CGGACCG**ACGCGTACGCGGCCGCTCGAG – GFP Tag – GTTAA

**Protein Sequence:**

>MG208015 representing BC021881  
 Red=Cloning site Green=Tags(s)

MSTIKSHKLLGRPCPSAGKQEDCLTLKSHKLLTRSCSGDPRCEHNTNLKPHKLLSRYSNNLRMEELYGL  
 KNHKLLSKSYSSAPKTSKMEHFKEPNAEGRRLSLTSGLIGILTPSSSSSQPPTNGAKSIPIRDGRFLVQT  
 IEFAEQRIQIPVLNEYCVVCDPEHVFQNGPMLRPTVCERELCVFAFQTLGVMNEAADEIATGAQVVDLLVSM  
 CRSALESPRKVVIFEPYPSVVDPNPQMLAFNPRKKNYDRVMKALDSITSIREMTQAPYLEIKKQMDKQD  
 PLAHPLLQWVISSNRSHIVKLPVNRQLKFMHTPHQFLLLSSPPAKESNFRAAKKLFSTFAFHGSHIENW  
 HSILRNGLVVASNTRLQLHGAMYSGIYLSMSSI SFGYSGMNNKQKVSSKDEPASSKSSNASQSQKKG  
 QQSQFLQSRNLKCIALCEVITSPDLHKHGEIWWVPNTDHSVTRFFVYEDGQVGDANINTQEGGIHKEIL  
 RVIGNQTATG

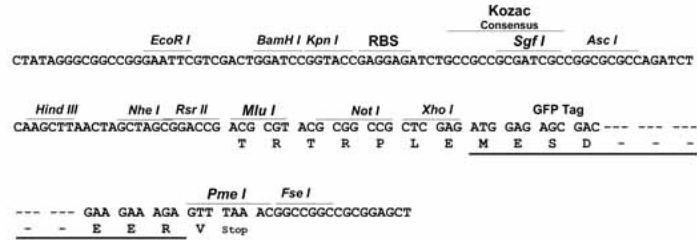
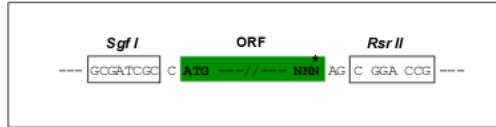
SGP**TRRRLE** – GFP Tag – V

**Restriction Sites:**

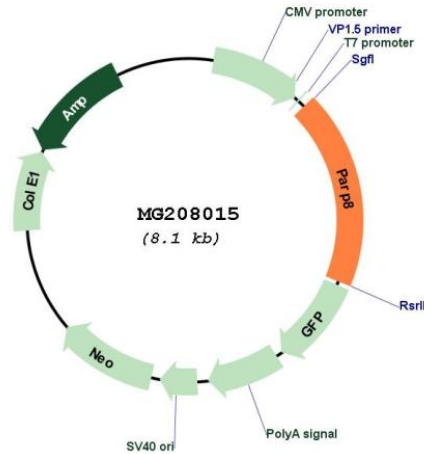
Sgfl-RsrII

Cloning Scheme:

Cloning sites used for ORF Shuttling:



Plasmid Map:



**ACCN:** BC021881

**ORF Size:** 1500 bp

**OTI Disclaimer:** The molecular sequence of this clone aligns with the gene accession number as a point of reference only. However, individual transcript sequences of the same gene can differ through naturally occurring variations (e.g. polymorphisms), each with its own valid existence. This clone is substantially in agreement with the reference, but a complete review of all prevailing variants is recommended prior to use. [More info](#)

**OTI Annotation:** This clone was engineered to express the complete ORF with an expression tag. Expression varies depending on the nature of the gene.

**Components:** The ORF clone is ion-exchange column purified and shipped in a 2D barcoded Matrix tube containing 10ug of transfection-ready, dried plasmid DNA (reconstitute with 100 ul of water).

**Reconstitution Method:**

1. Centrifuge at 5,000xg for 5min.
2. Carefully open the tube and add 100ul of sterile water to dissolve the DNA.
3. Close the tube and incubate for 10 minutes at room temperature.
4. Briefly vortex the tube and then do a quick spin (less than 5000xg) to concentrate the liquid at the bottom.
5. Store the suspended plasmid at -20°C. The DNA is stable for at least one year from date of shipping when stored at -20°C.

**RefSeq:** [BC021881.1](#)

**RefSeq Size:** 2887 bp

**RefSeq ORF:** 1502 bp

**Locus ID:** 52552

**Cytogenetics:** 13 65.32 cM

**Gene Summary:** Mono-ADP-ribosyltransferase that mediates mono-ADP-ribosylation of target proteins.  
[UniProtKB/Swiss-Prot Function]