

Product datasheet for **MG207987**

Slc17a3 (NM_134069) Mouse Tagged ORF Clone

Product data:

Product Type:	Expression Plasmids
Product Name:	Slc17a3 (NM_134069) Mouse Tagged ORF Clone
Tag:	TurboGFP
Symbol:	Slc17a3
Synonyms:	AW261723; Npt4
Mammalian Cell Selection:	Neomycin
Vector:	pCMV6-AC-GFP (PS100010)
E. coli Selection:	Ampicillin (100 ug/mL)



[View online »](#)

ORF Nucleotide Sequence:

>MG207987 representing NM_134069
 Red=Cloning site Blue=ORF Green=Tags(s)

TTTTGTAATACGACTCACTATAGGGCGGCCGGAATTCGTCGACTGGATCCGGTACCGAGGAGATCTGCC
 GCC**CGGATCGCC**

ATGCCACAGTGGTAGAGATGAGCCCTACAAGTGAGCAGAGTGGATTCGTCCTAGGTACGCCAGTGAACA
 AGAAGACCCCTGCCTGAAAGTCCCGAGTTTATGTTCCATGCGCTATGGAATCGCCTTCGTACACATTT
 CTGCAATTTCACTGATGGCGCAGAATTCTATTATAAGCATCACCATGGTAGCAATGGTCAACAACACC
 GACCACCCACCCACCTCAATAGCTCTACTGAACAGCTTCTGCGGGTTAAGCGGTGATCAGCATGAAG
 CCTCAAAGCATCTTCTATAAAGGCCCTGTGTATAACTGGAGTCTCAAACCTCAAGGAATCATCTTCAG
 CTCTGTCCAGTATGGCATGATACTGATGCAAGTCTGGAGGATACTGGCAGGGAAAATAGGAACAAAG
 AAAGTGGTTGGAATTGCTCTGCTGGATCTTCATTACTCACTCTGTCATCCACTGGCTGCCAATCTTG
 GACTAGTTTTTTCTGGCAACTCGAGCAGTCAAGGCTTAATGCAGGGCACTGGATATGGGGACAGTT
 TGCCTCTGGCAGAAATGGGCTCTCCGAATGAGCGCAGCCGACTCTGCACCATTGCCTTGTGAGGAATG
 ACATTGGGAATCTTTACTGTCTCTTGTGGGCGGCATCATTAGTGAAGCCCTTGGGTGGCCCTTTGTCT
 TCTATAGTTTTGGAGTGGTGGTGTCTGTCAGCCTTCTCTGGTTCATTCTGATTTATGATGACCCGT
 CTCTCACCCATGGATAAGTGGCCAGAAAGAGAATATATTTTATCCTCTCTGAACCAACAGTTACGCTCA
 GAAGAGCAGCCACTTCCCATAAAGCTATGCTCAAATCTCTGCCTCTCTGGTCCATGTGTCTCTGCACTA
 TGACCCATCAGTGGCTTGTAAACACCTTATAATGTACTCAACCTACATCAGTTCTGTATTCAAAGT
 TAACATCAGAGACAATGGGTTCTGTCTCTCTCCCTTATTGTTGCCTGGGTCCTTGGTATCTGGGA
 GGCTGGCTGGCAGATTTCTACTGAGCAAGAATTTAGGCTCATAACTGTGAGAAAATTCATCACACTTT
 TAGGAAATGCTCCTCTGCAGCCCTCGTTGCGGCTCTGCCCTATATCCAATCCAGCTATATTACAACAAT
 TATATTTCTGACAATTTCTGTGGACTGTGCCCTCTATCTCAGGCAGGAATCTATATTAATGCGTTAGAC
 ATTGCTCAAGGTATGCCAGTTTCTCATGGGAACATCAAGAGGATTGGCACATTCATCGCTGTGCTGG
 TACCCATTGTTGCTGGCTTTTCTCAGCCAGGACTCTGAATTCGGGTGGAGGAATTTCTTTTTTGTAGT
 GTTTGCAGTTAACCTACTTGGCTTAATCATCTACCTCGTGTGGGAAAGCAGATGTTCAAGAAATGGGCT
 AGAGAGAGGAAGCTCACTCGTTTG

ACGCGTACGCGGCCGCTCGAG - GFP Tag - GTTTAA

Protein Sequence:

>MG207987 representing NM_134069
 Red=Cloning site Green=Tags(s)

MATVVEMSPTSEQSEFVLGTPVNNKTPALKVPSLCSMRYGIAFVTHFCNFTLMAQNSIISITMVMVNNT
 DHPHPLNSSTEQPLPAGLSGDQHEASKHLPKAPVYNWSPQTQGIIFSSVQYGMILMQGPGGYLAGKIGTK
 KVVGIALLGSSLLTLCIPLAANLGLVFFLATRAVQGLMQGTGYGGQFALWQKWAPPNERSRLCTIALSGM
 TLGIFTVLLVGGIISEALGWPFVYFSGGGVLCSSLWFILYDDPVSHPWISGPEREYILSSLNQQFSS
 EEQPLPIKAMKSLPLWSMCLCTMTHQWL VNTFIMYPTYISSVFKVNIRDNGFLSSLPFIVAWVLGILG
 GWLADFLLSKNFRLITVRKFITLLGNAPPAALVAALPYIQSSYITTTIIFLTISCGLCPLSQAGIYINALD
 IAPRYASFLMGTSRGLAHSSAVLVPIVAGFFLSQDSEFGWRNFFVVFVAVNLLGLIIYL VFGKADVQEWA
 RERKLTRL

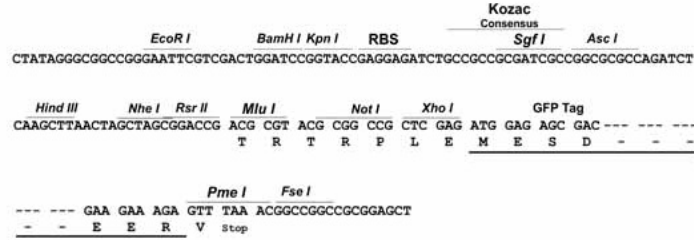
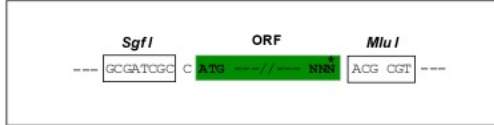
TRTRPLE - GFP Tag - V

Restriction Sites:

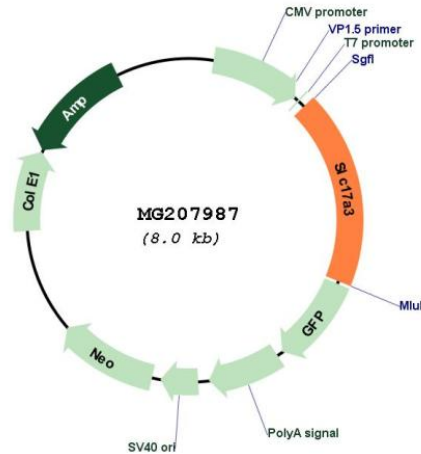
Sgfl-MluI

Cloning Scheme:

Cloning sites used for ORF Shutting:



Plasmid Map:



ACCN: NM_134069

ORF Size: 1494 bp

OTI Disclaimer: The molecular sequence of this clone aligns with the gene accession number as a point of reference only. However, individual transcript sequences of the same gene can differ through naturally occurring variations (e.g. polymorphisms), each with its own valid existence. This clone is substantially in agreement with the reference, but a complete review of all prevailing variants is recommended prior to use. [More info](#)

OTI Annotation: This clone was engineered to express the complete ORF with an expression tag. Expression varies depending on the nature of the gene.

Components: The ORF clone is ion-exchange column purified and shipped in a 2D barcoded Matrix tube containing 10ug of transfection-ready, dried plasmid DNA (reconstitute with 100 ul of water).

Reconstitution Method:

1. Centrifuge at 5,000xg for 5min.
2. Carefully open the tube and add 100ul of sterile water to dissolve the DNA.
3. Close the tube and incubate for 10 minutes at room temperature.
4. Briefly vortex the tube and then do a quick spin (less than 5000xg) to concentrate the liquid at the bottom.
5. Store the suspended plasmid at -20°C. The DNA is stable for at least one year from date of shipping when stored at -20°C.

RefSeq: [NM_134069.3](#), [NP_598830.2](#)

RefSeq Size: 4276 bp

RefSeq ORF: 1497 bp

Locus ID: 105355

Cytogenetics: 13 A3.1