

Product datasheet for **MG207984**

Angpt1 (NM_009640) Mouse Tagged ORF Clone

Product data:

Product Type:	Expression Plasmids
Product Name:	Angpt1 (NM_009640) Mouse Tagged ORF Clone
Tag:	TurboGFP
Symbol:	Angpt1
Synonyms:	1110046O21Rik; an; Ang; Ang-1; Ang1
Mammalian Cell Selection:	Neomycin
Vector:	pCMV6-AC-GFP (PS100010)
E. coli Selection:	Ampicillin (100 ug/mL)



[View online »](#)

ORF Nucleotide Sequence:

>MG207984 representing NM_009640
 Red=Cloning site Blue=ORF Green=Tags(s)

TTTTGTAATACGACTCACTATAGGGCGGCCGGAATTCGTCGACTGGATCCGGTACCGAGGAGATCTGCC
 GCC**GCGATCGCC**

ATGACAGTTTTCTTTCTTTGCACTTCTCGTGCATTCTGACTCACATAGGGTGCAGCAACCAGCGCC
 GAAATCCAGAAAACGGAGGGAGAAGATATAACCGGATTCAACATGGGCAATGTGCCTACACTTTCTTCT
 TCCAGAACACGACGGAACTGCCGTGAGAGTGCAGACAGCAGTACAACCAACGCTCTGCAAAGGGAT
 GCTCCACACGTGGAGCCGGATTTCTTTCCAGAACTTCAGCATCTGGAGCATGTGATGGAAAATTATA
 CTCAGTGGCTGCAAAAACCTTGAGAATTACATTGTGAAAAATGAAGTCGGAGATGGCCAGATACAACA
 GAATGCTGTTCAAAACCACCGCCACCATGCTTGAGATAGGAACCACTCTTTATCTCAGACTGCAGAG
 CAGACCCGAAAGCTGACAGATGTTGAGACCCAGGTAATAATCAAACATCCCGACTTGAATACAACCTGC
 TAGAGAATTCATTATCAACATACAAGCTAGAGAAGCAACTTCTCCAACAGACAAAATGAAATCTGAAGAT
 TCACGAAAAAACAGTTTACTAGAGCACAAAATCTTAGAAATGGAGGGAAAAACAAAAGAAGAATTGGAC
 ACCTTGAAGGAGGAGAAAAGAAAACCTTCAAGGCTTGGTTTCTCGTCAGACATTCATCATCCAGGAGTTGG
 AGAAGCAACTTAGTAGAGCTACCAACAACAGCATCCTGCAGAAGCAACAACCTGGAGCTCATGGACAC
 AGTTCATAACCTTATCAGCCTTTCAGCTAAAGAAGGTGTTTTGCTAAAGGGAGGAAAAAGAGAAGAAGAG
 AAACCATTTTCGAGACTGTGCGGATGTATATCAAGCTGGTTTTAATAAAAGTGGAACTACACTATTTATT
 TTAATAATATGCCAGAACCCAAAAGGTATTTGCAATATGGATGTGAATGGGGGAGGTTGGACAGTAAT
 ACAACACCGGGAAGATGGAAGCCTGGATTTCCAGAGGGGCTGGAAGGAGTATAAAATGGTTTTGGGAAT
 CCCTCTGGTGAATATTGGCTTGGGAACGAGTTCATTTTGAATAACCAAGTCAGAGGCAGTACATGCTGA
 GGATTGAGCTGATGGACTGGGAAGGGAACCGAGCCTACTCACAGTACGACAGATTCACATAGGAAATGA
 AAAGCAGAACTATAGTTATATTTAAAAGGTACACAGGGACAGCAGGCAACAGAGCAGCTTGATCTTA
 CACGGTCCGATTTACAGCACGAAGGATGCTGATAACGACAACGTATGTGCAAAATGCGCTCTCATGCTAA
 CAGGAGGTTGGTGGTTCGATGCCTGTGGCCCTTCAATCTAAATGGAATGTTCTACACTGCGGGACAAAA
 TCATGGAAAACCTGAATGGGATAAAGTGGCACTACTTCAAAGGGCCAGTACTCCTTACGTTCCACCACC
 ATGATGATCCGGCCCTTGGACTTT

ACGCGTACGCGGCCGCTCGAG - GFP Tag - GTTTAA

Protein Sequence:

>MG207984 representing NM_009640
 Red=Cloning site Green=Tags(s)

MTVFLSFAFFAAILTHIGCSNQRNPENGGRRYNIHQGCAYTFILPEHDGNCRESTATEQYNTNALQRD
 APHVEPDFSSQKLQHLHVMEYNTQWLQKLENYIVENMKSEMAQIQONAVQNHTATMLEIGTSLLSQTAE
 QTRKLTQVETQVLNQTSLRLEIQLENSLSTYKLEKQLLQQTNEILKIHEKNSLLEHKILEMEGKHKEELD
 TLKEEKENLQGLVSRQTFIIQELEKQLSRATNNSILQKQLELMDTVHNLISLCTKEGVLLKGGKREEE
 KPFRDCADVYQAGFNKSGIYTIYFNNMPEPKVFCNMDVNGGGWTVIQHREDGSLDFQRGWKEYKMGFGN
 PSGEYWLGNFIFAITSQRQYMLRIELMDWEGNRAYSQYDRFHIGNEKQNYRLLYKGTGTAGKQSSLIL
 HGADFSTKDADNDNCMKCALMLTGGWVFDACGPSNLNGMFYTAGQNHGKLNIGIKWHYFKGPSYSLRSTT
 MMIRPLDF

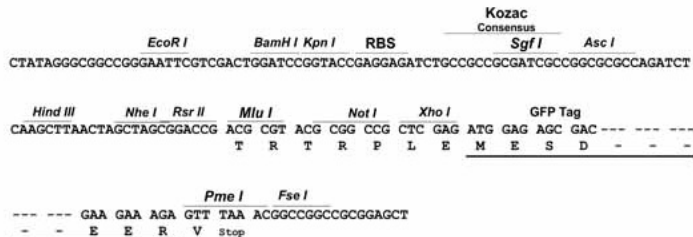
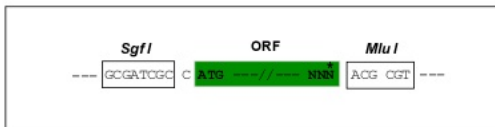
TRTRPLE - GFP Tag - V

Restriction Sites:

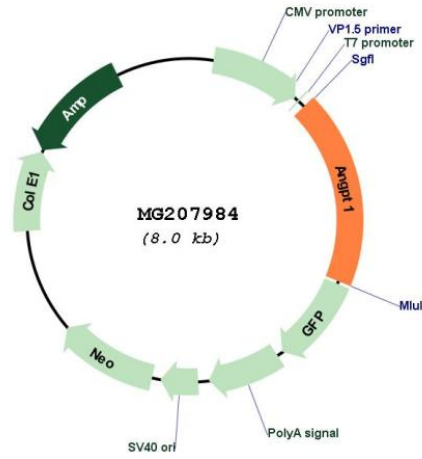
Sgfl-Mlul

Cloning Scheme:

Cloning sites used for ORF Shutting:



Plasmid Map:



ACCN: NM_009640
 ORF Size: 1494 bp

OTI Disclaimer:	<p>Due to the inherent nature of this plasmid, standard methods to replicate additional amounts of DNA in E. coli are highly likely to result in mutations and/or rearrangements. Therefore, OriGene does not guarantee the capability to replicate this plasmid DNA. Additional amounts of DNA can be purchased from OriGene with batch-specific, full-sequence verification at a reduced cost. Please contact our customer care team at custsupport@origene.com or by calling 301.340.3188 option 3 for pricing and delivery.</p> <p>The molecular sequence of this clone aligns with the gene accession number as a point of reference only. However, individual transcript sequences of the same gene can differ through naturally occurring variations (e.g. polymorphisms), each with its own valid existence. This clone is substantially in agreement with the reference, but a complete review of all prevailing variants is recommended prior to use. More info</p>
OTI Annotation:	<p>This clone was engineered to express the complete ORF with an expression tag. Expression varies depending on the nature of the gene.</p>
Components:	<p>The ORF clone is ion-exchange column purified and shipped in a 2D barcoded Matrix tube containing 10ug of transfection-ready, dried plasmid DNA (reconstitute with 100 ul of water).</p>
Reconstitution Method:	<ol style="list-style-type: none">1. Centrifuge at 5,000xg for 5min.2. Carefully open the tube and add 100ul of sterile water to dissolve the DNA.3. Close the tube and incubate for 10 minutes at room temperature.4. Briefly vortex the tube and then do a quick spin (less than 5000xg) to concentrate the liquid at the bottom.5. Store the suspended plasmid at -20°C. The DNA is stable for at least one year from date of shipping when stored at -20°C.
RefSeq:	NM_009640.2
RefSeq Size:	4078 bp
RefSeq ORF:	1497 bp
Locus ID:	11600
UniProt ID:	O08538
Cytogenetics:	15 16.69 cM
Gene Summary:	<p>This gene encodes a secreted glycoprotein that belongs to the angiopoietin family of vascular growth factors. The encoded protein is a ligand in the vascular tyrosine kinase signaling pathway and regulates the formation and stabilization of blood vessels. This protein also functions in striated muscles by promoting proliferation, migration and differentiation of skeletal myoblasts and plays an essential role in the vascular response to tissue injury. Alternative splicing results in multiple transcript variants. [provided by RefSeq, Oct 2013]</p>