

Product datasheet for **MG207981**

Entpd8 (NM_028093) Mouse Tagged ORF Clone

Product data:

Product Type:	Expression Plasmids
Product Name:	Entpd8 (NM_028093) Mouse Tagged ORF Clone
Tag:	TurboGFP
Symbol:	Entpd8
Mammalian Cell Selection:	Neomycin
Vector:	pCMV6-AC-GFP (PS100010)
E. coli Selection:	Ampicillin (100 ug/mL)



[View online »](#)

ORF Nucleotide Sequence:

>MG207981 representing NM_028093
 Red=Cloning site Blue=ORF Green=Tags(s)

TTTTGTAATACGACTCACTATAGGGCGGCCGGAATTCGTCGACTGGATCCGGTACCGAGGAGATCTGCC
 GCC**CGGATCGCC**

ATGGGACTCTCCTGGAAGGAACGGGTCTTCATGGCTCTGTTGGGAGTTGCAGCAGCCTCTGGCCTACCA
 TGCTCGTCTCATCTGGTGAAGGCAATCAATGTTCTCTTGCCTGCAGACACCAAGTTGGGATTGTGTT
 TGATGCCGGCTCCTCCACACATCCCTGTTTGTGTACCAAGTGGCCAGCAAACAAGGAGAAGGACACAGGA
 GTGGTCAGCCAGGCCCTGACTTGCCAGATAGAAGGACCTGGAATCTCTTCTATACCTCTGACCCGACAC
 AGGCTGGGAAAAGCCTGAAGAGCTGCCTGGAGGAGGCGTGGCGTTGATCCACAGGCCAGCATCCAGA
 GACGCCACATTCTGGGGTCCACAGCAGGAATGAGGCTGCTCAGCCAGAAGAACAGCTCTCAGGCAAGA
 GACATCTAGCTGCAGTCTCCAGACACTAAGCAAGTCTCCTGTGGATTTTTGGGGTCTAAGATCTTGG
 CTGGGCAGGATGAAGTGCCTTTGGCTGGATCACCATCAACTATGTCCTGGGAATGCTCCTGAAGTATTC
 CTCTGGACAGTGGATCCTGCCTGAAGAGGGGATGCTAGTTGGTGTCTGGACCTTGGTGGAGCCTCCAGC
 CAGATCAGCTTCGTGCCTCAGGGCCCCATCCTGGACCAGAGCACCAAGTCACTTCCGCTGTACGGTG
 CCAACTACAGTGTCTATACTCACAGCTACCTCTGCTTTGGGCGGGACCAGATCCTGAACAGGCTCCTGGC
 TAAGCTGGCACAGGACAGGTTGAGCAGCCAGGTGGCCCCGGTCCAGACACCCATGCTACCACAGTGGCTAC
 CAGGCCACTGCCACTGAGTTCCTTGTATGACTACCCCTGCATCCACACTACAGATTCCTGAACCACA
 CCCAGAACCTCACAGTTGAAGGGACAGGCGACCCTGGAACTGTGTGGTAGCTCTCCGAAGTCTCTTCAA
 CTTCTCCAGCTGTAAGGGCCAGAAGGATTGTGCTTTCAATGGCATCTACCAGCCTCCTGTGCACGGCCAG
 TTCTATGCATTTTCCAACCTTTACTACACCTTCCATTTCTGAACCTCAGTCCAGGCAATCACTGAACA
 CTGTCAACGACACTGTCTGGAAGTCTGTGCAGAAACCTGGAACTGGTGGAAAGTCACTATCCTGGGCA
 GGAGCGCTGGTTACGGGACTACTGTGCCTCGGGTCTGTACATCCTCGTATTGCTGCTGGAGGGCTACAAA
 TTCAGTGAGGAGACCTGGCCCAACATCCAGTTCAGAAAGCAGGCAGGTAACACAGACATTGGCTGGACAC
 TGGGCTTCATGCTGAACCTGACAGGCATGATTCCAGCTGAGGCACCGACCCACTGGCGGGCTCAGAGCTA
 CAGCATCTGGACGGCTGGAGTAGTATTCGAGTGTGACCCTTGTGGCCATTCTTGGGCGAGCTGCCATC
 CAGATCTTCTGGACCCAGGAC

ACGCGTACGCGGCCGCTCGAG - GFP Tag - GTTTAA

Protein Sequence:

>MG207981 representing NM_028093
 Red=Cloning site Green=Tags(s)

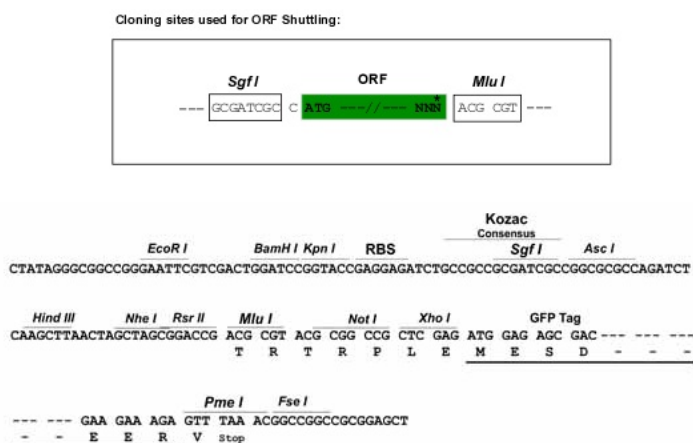
MGLSWKERVFMALLGVAAASGLTMLVLILVKAINVLLPADTKFGIVFDAGSSHTSLFVYQWPANKEKDTG
 VVSQALTCQIEGPGISSYTSDPQTQAGESLKSCLEELALIPQAQHPETPTFLGSTAGMRLLSQKNSSQAR
 DILAAVSQTLKSPVDFWAKILAGQDEGAFGWITINYVLGMLLKYSQQWILPEEGMLVGALDLGGAST
 QISFVPQGPILDQSTQVTFRLYGANYSVYTHSYLCFGRDQILNRLAKLAQDRLSSQVAPVRHPCYHSGY
 QAILPLSSLYDSPCIHTTDSLNTQNL TVEGTGDPGNCVVALRSLFNFSSCKGQKDFAFNGIYQPPVHGQ
 FYAFSNFYTFHFLNLT SRQSLNTVNDTVWKFQKPKLVEVSYPGQERWLRDYCASGLYLVLVLLLEGYK
 FSEETWPNIQFQKQAGNTDIGWTLGFMLNLTGMIPAEAPTHWRAQSYSIWTAGVVFAVLTLVAILGAAAI
 QIFWTQD

TRTRPLE - GFP Tag - V

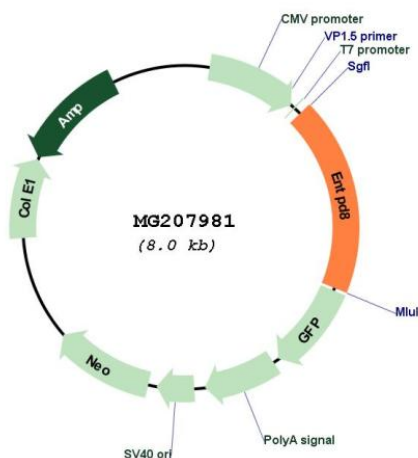
Restriction Sites:

Sgfl-MluI

Cloning Scheme:



Plasmid Map:



ACCN: NM_028093

ORF Size: 1491 bp

OTI Disclaimer: The molecular sequence of this clone aligns with the gene accession number as a point of reference only. However, individual transcript sequences of the same gene can differ through naturally occurring variations (e.g. polymorphisms), each with its own valid existence. This clone is substantially in agreement with the reference, but a complete review of all prevailing variants is recommended prior to use. [More info](#)

OTI Annotation: This clone was engineered to express the complete ORF with an expression tag. Expression varies depending on the nature of the gene.

Components: The ORF clone is ion-exchange column purified and shipped in a 2D barcoded Matrix tube containing 10ug of transfection-ready, dried plasmid DNA (reconstitute with 100 ul of water).

Reconstitution Method:

1. Centrifuge at 5,000xg for 5min.
2. Carefully open the tube and add 100ul of sterile water to dissolve the DNA.
3. Close the tube and incubate for 10 minutes at room temperature.
4. Briefly vortex the tube and then do a quick spin (less than 5000xg) to concentrate the liquid at the bottom.
5. Store the suspended plasmid at -20°C. The DNA is stable for at least one year from date of shipping when stored at -20°C.

RefSeq: [NM_028093.1](#), [NP_082369.1](#)

RefSeq Size: 2306 bp

RefSeq ORF: 1494 bp

Locus ID: 72090

UniProt ID: [Q8K0L2](#)

Cytogenetics: 2 A3

Gene Summary: Canalicular ectonucleoside NTPDase responsible for the main hepatic NTPDase activity. Ectonucleoside NTPDases catalyze the hydrolysis of gamma- and beta-phosphate residues of nucleotides, playing a central role in concentration of extracellular nucleotides. Has activity toward ATP, ADP, UTP and UDP, but not toward AMP.[UniProtKB/Swiss-Prot Function]