

## Product datasheet for **MG207975**

### Zfp3 (NM\_177565) Mouse Tagged ORF Clone

#### Product data:

Product Type:	Expression Plasmids
Product Name:	Zfp3 (NM_177565) Mouse Tagged ORF Clone
Tag:	TurboGFP
Symbol:	Zfp3
Synonyms:	A1854635; B230309J24; Fnp-1; Zfp-3
Mammalian Cell Selection:	Neomycin
Vector:	pCMV6-AC-GFP (PS100010)
E. coli Selection:	Ampicillin (100 ug/mL)



[View online »](#)

**ORF Nucleotide Sequence:**

>MG207975 representing NM\_177565  
 Red=Cloning site Blue=ORF Green=Tags(s)

TTTTGTAATACGACTCACTATAGGGCGGCCGGGAATTCGTCGACTGGATCCGGTACCGAGGAGATCTGCC  
 GCC**CGCATCGCC**

ATGGGGACTGAGAAAAAGGAGGGACTTCCAAGGAAGAACTTCTGAAGACTCCAAGCCACATGGGCAAA  
 CAGTAGAAAAACTTGCACAGGAGTTTGCATGGCCATGAGTTTGGAGAAGCAAGCGAGGAAAGACATGTC  
 AGAGGGACATTTGAGAGAGTCTCGAAAGAGATTATAGAAAAAGGTATCCTCAGGAGAGACACTTTGCA  
 TCTGGGTACTTATCTTCAAGAAGTCGCTCAGGTGAGAAAACCAAGTGAAGTCCGAGAGGCTTTAATC  
 CTAACCCTAGTGTATTGTGTCATGGAGGTGCTGAGAGGGCCAGCGCATGTGCTGCCTCTGGCCACAACCTG  
 CCTGGGGAGTATAGAGCTTACTAAAGCTCAGGGGCCTCCTGTGGGAGAGAAGCCTCACACGTGTAAGAG  
 TGCGGGAAAGCTTTTAATCAGAACTCACATCTCATCCAGCATATGAGAGTCCATAGCGGAGAAAAACCCCT  
 TCGAATGCAAAGAGTGTGAAAGACCTTCGGGACTAACTCCAGCCTTCGAAGGCACAGAGAATTCACGC  
 CGGAGAGAAAACCTTTGCTTGCAGTGTGGCAAGGCCTTCATTTCAGAGCTCACATCTGATTCACCAT  
 CACAGAATCCATACTGGAGAAAGACCTTATAAATGTGAAGAGTGTGGTAAAGCCTTCAGTCAGAACTCAG  
 CCCTTATTCTGCACCAGAGAATCCACACTGGAGAGAAAACCTATGAGTGTAAACGAGTGTGGGAAGACCTT  
 CCGGGTTAGTTCACAGCTCATCCAGCATCAGAGAATTCACACAGAGGAAAGATACCACGAGTGCAGTGTGAG  
 TGCGGCAAAGCCTTCAAGCACAGCTCCGGCCTCATCAGACATCAGAAAATCCACACGGGAGAAAAGCCCT  
 ATCTGTGTAATGAATGTGGGAAAGGCTTTGGTTCAGAGCTCGGAGCTTATCCGCCATCAAAGAATCCACAC  
 AGGGGACAAGCCCTATGAGTGCAGTGAATGCGGGAAAACGTTTGGCCAGAACTCAGAAATATTAGACAT  
 ATCAGAATTCATACCGGGGAGAAGCCCTATGTGTGCAAAGAGTGTGGGAAGGCCTTCAGGGTAACTCGG  
 AGCTCCTGAGACACGAGAGGATTACACAGGGGAGAAAACCTATGAGTGTGTTGAGTGTGGGAAGGCCTT  
 CAGGCGGACCTCTCATCTGATTGTCCACCAGAGAATCCACACTGGGGAGAAAACCCATCAGTGTAAATGAG  
 TGTGCAAGAACCTTCTGGGATAATTCTGAGCTGTTGCTTCACCAGAAGATTATATTGGAGAGAAAACCTT  
 ATGAGTGTAGCGAATGCGAGAAGACGTTTCCAGCAACTCCAGCTCACCATCCACCAGAGAATTCACAC  
 TGGAGAAAAGCCATATGAGTGTGAGGAGTCCAGAAAGACCTTCAGTCGGAGCTCCACCTCCTCCGGCAC  
 CAGAGCGTTCAGTGTAGCGAG

**ACGCGTACGCGGCCGCTCGAG** - GFP Tag - GTTTAA

**Protein Sequence:**

>MG207975 representing NM\_177565  
 Red=Cloning site Green=Tags(s)

MGTEKKEGLPKEETSSEDSKPHGQTVEKLAQEVCHGHEFGEASEEDMSEGHLESSKEIEKRYPQERHFA  
 SGLLIFKKSSSGEKTSENPRGFNPNSVLCHGGAERASACAASGHNCLGSIELTKAQGPPVGEKPHTCKE  
 CGKAFNQNSHLIQHMRVHSGEKPFECKEKGKTFGTNSSLRRHQRIHAGEKPFACTECGKAFIQSSHLIHH  
 HRIHTGERPYKCEECGKAFSQNSALILHQRIHTGEKPYECNECGKTFRVSSQLIQHQRIHTEERYHECSE  
 CGKAFKHSSGLIRHQIHTGEKPYLNCNCGKGFQSSSELIRHQRIHTGDKPYECSECGKTFQNSEIIRH  
 IRIHTGEKPYVCKEKGKAFRGNSELLRHERIHTGEKPYECFECGKAFRRTSHLIVHQRIHTGEKPHQCNE  
 CARTFWDNSELLHQKIHIHGEKPYECSECEKTFQSQSLTIHQRIHTGEKPYECQECQKTFSRSSHLLRH  
 QSVHCSE

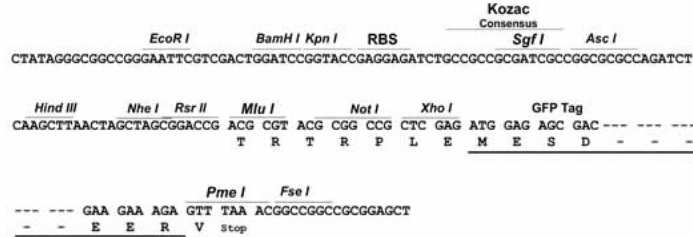
**TRTRPLE** - GFP Tag - V

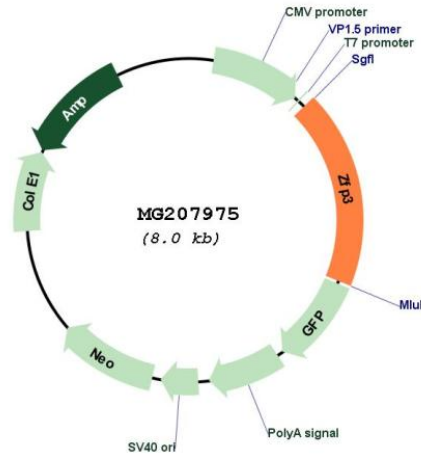
**Restriction Sites:**

Sgfl-Mlul

Cloning Scheme:

Cloning sites used for ORF Shutting:



**Plasmid Map:**


**ACCN:** NM\_177565

**ORF Size:** 1491 bp

**OTI Disclaimer:** The molecular sequence of this clone aligns with the gene accession number as a point of reference only. However, individual transcript sequences of the same gene can differ through naturally occurring variations (e.g. polymorphisms), each with its own valid existence. This clone is substantially in agreement with the reference, but a complete review of all prevailing variants is recommended prior to use. [More info](#)

**OTI Annotation:** This clone was engineered to express the complete ORF with an expression tag. Expression varies depending on the nature of the gene.

**Components:** The ORF clone is ion-exchange column purified and shipped in a 2D barcoded Matrix tube containing 10ug of transfection-ready, dried plasmid DNA (reconstitute with 100 ul of water).

**Reconstitution Method:**

1. Centrifuge at 5,000xg for 5min.
2. Carefully open the tube and add 100ul of sterile water to dissolve the DNA.
3. Close the tube and incubate for 10 minutes at room temperature.
4. Briefly vortex the tube and then do a quick spin (less than 5000xg) to concentrate the liquid at the bottom.
5. Store the suspended plasmid at -20°C. The DNA is stable for at least one year from date of shipping when stored at -20°C.

**RefSeq:** [NM\\_177565.3](#), [NP\\_808233.1](#)

**RefSeq Size:** 1838 bp

**RefSeq ORF:** 1494 bp

**Locus ID:** 193043

**UniProt ID:** [Q8BLB0](#)

**Cytogenetics:** 11 43.21 cM

**Gene Summary:** May be involved in transcriptional regulation.[UniProtKB/Swiss-Prot Function]