

Product datasheet for **MG207961**

Pctk1 (BC011069) Mouse Tagged ORF Clone

Product data:

Product Type:	Expression Plasmids
Product Name:	Pctk1 (BC011069) Mouse Tagged ORF Clone
Tag:	TurboGFP
Symbol:	Pctk1
Synonyms:	Crk5; Pctaire1; Pctk1
Mammalian Cell Selection:	Neomycin
Vector:	pCMV6-AC-GFP (PS100010)
E. coli Selection:	Ampicillin (100 ug/mL)



[View online »](#)

ORF Nucleotide Sequence:

>MG207961 representing BC011069
 Red=Cloning site Blue=ORF Green=Tags(s)

TTTTGTAATACGACTCACTATAGGGCGGCCGGAATTCGTCGACTGGATCCGGTACCGAGGAGATCTGCC
 GCC**CGCATCGCC**

ATGGATCGGATGAAGAAGATCAAACGGCAGCTGTCAATGACACTCCGAGGGGGCCGAGGCATAGATAAGA
 CCAATGGTGTCCCTGAGCAGATAGGCCTGGATGAGAGTGGTGGCGGTGGTGGCAGTGACCTTGGAGAAGC
 TCCACCCGTATTGCCCTGGGGAGCTTCGCTCTGTTCCGGGGCCCACTCAGCTCTGCACCAGAGATTGTG
 CACGAGGACATGAAGATGGGATCTGATGGGGAGAGTGACCAGGCTTACGCCACATCCTCAGATGAGGTGC
 AGTCTCCAGTGAGAGTGCGCATGCGCAACCACCCCCACGCAAGATCTCCACTGAGGACATCAACAAACG
 CCTGTCACTACCAGTGACATACGGCTGCCTGAGGGCTACCTTGAGAAGCTGACCCTCAATAGCCCCATC
 TTTGATAAGCCTTTAGCCGGCCCTCCGCCGAGTCAGTTTGTCTGAGATTGGCTTTGGAAAAGTGGAGA
 CCTACATCAAGCTAGACAAGCTGGGTGAGGGTACCTATGCCACTGTCTACAAAGGCAAAAGCAAGCTCAC
 AGACAACCTTGTAGCACTTAAGGAGATCAGACTGGAACACGAAGAAGGGGCACCCTGTACTGCTATCCGG
 GAAGTATCCCTGCTTAAGGACCTCAAGCATGCCAATCGTCACACTACATGACATTATCCACACAGAGA
 AGTCCCTCACACTTGTCTTTGAATACTTGACAAGGACCTGAAGCAGTACCTGGATGACTGTGAAATGT
 CATCAACATGCACAATGTGAAACTGTTCCCTGTTCCAGTTGCTCCGTGGCCTGGCCTACTGCCACAGGCAG
 AAGGTGTACACCGAGACCTCAAGCCCCAGAACCTACTCATCAACGAGAGGGGAGAGCTCAAAGTGGCAG
 ATTTTGGCCTGGCTCGTGCCAAGTCAATTCCTACTAAAACATACTCCAACGAAGTGGTGACACTGTGGTA
 CCGGCCCTGACATCCTACTTGGGTCCACAGACTACTTACCCAAATTGACATGTGGGGTGTAGGCTGC
 ATCTTCTATGAGATGGCCACCGCCGGCCCTTCCCAGGCTCCACAGTGAAGAAGCAGCTGCATTTCA
 TCTTCCGCAATTTGGGAACCCCAACTGAGGAGACATGGCCAGTATCCTGTCCAATGAGGAGTTTAGAAC
 ATACAACACCCCAAGTACCGAGCCGAGGCCCTTCTGAGCCATGCACCCGACTTGATAGCGATGGAGCT
 GACCTCCTCACCAAGCTGCTGCAGTTTGGGGTGCATCGGATCTCTGCTGAGGATGCCAGGAAACATC
 CATTCTTCTCAGCTTGGGGGAGCGGATCCACAAACTTCTGACACTACTTCCATATTTGCACTAAAGGA
 GGTACAGCTACAAAGGAGGCCAACATTCGGTCCACTTCTATGCCTGACTCAGGCAGGCCAGCTTCCGT
 GTGGTGGATACCGAGTTC

ACGCGTACGCGGCCGCTCGAG – GFP Tag – GTTTAA

Protein Sequence:

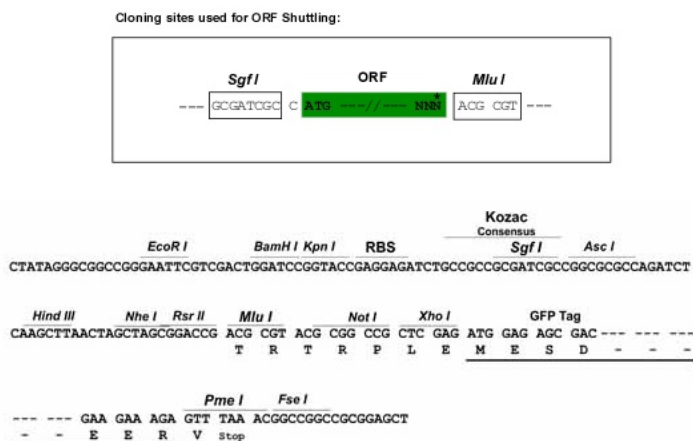
>MG207961 representing BC011069
 Red=Cloning site Green=Tags(s)

MDRMKKIKRQLSMTLRGGRGIDKTNGVPEQIGLDESGGGGSDLGEAPTRIPGELRSVRGPLSSAPEIV
 HEDMKMGSDGESDQASATSSDEVQSPVVRVVRMRNHPPRKISTEDINKRLSLPADIRLPEGYLEKLTLSPI
 FDKPLSRRLRRVSLSEIGFGKLETYIKLDKLGEGTYATVYKGSKSLTDNLVALKEIRLEHEEGAPCTAIR
 EVSLLKDLKHANIVTLHDIHTEKSLTLVFEYLDKDLKQYLDCCGNVINMHNKFLFQLLRGLAYCHRQ
 KVLHRDLKPQNLINERGELKLADFLARAKSIPTKYSNEVVTLWYRPPDILLGSTDYSTQIDMWGVGC
 IFYEMATGRPLFPGSTVEEQLHFIFRILGTPTEETWPGILSNEEFRTYNYPKYRAEALLSHAPRLDSDGA
 DLLTKLLQFEGRNRISAEDARKHPFFLSLGERIHKLPDTSIFALKEVQLQKEANIRSTSMPDSGRPAFR
 VVDETF

TRTRPLE – GFP Tag – V

Restriction Sites:

Sgfl-Mlul

Cloning Scheme:


ACCN: BC011069

ORF Size: 1490 bp

OTI Disclaimer: The molecular sequence of this clone aligns with the gene accession number as a point of reference only. However, individual transcript sequences of the same gene can differ through naturally occurring variations (e.g. polymorphisms), each with its own valid existence. This clone is substantially in agreement with the reference, but a complete review of all prevailing variants is recommended prior to use. [More info](#)

OTI Annotation: This clone was engineered to express the complete ORF with an expression tag. Expression varies depending on the nature of the gene.

Components: The ORF clone is ion-exchange column purified and shipped in a 2D barcoded Matrix tube containing 10ug of transfection-ready, dried plasmid DNA (reconstitute with 100 ul of water).

Reconstitution Method:

1. Centrifuge at 5,000xg for 5min.
2. Carefully open the tube and add 100ul of sterile water to dissolve the DNA.
3. Close the tube and incubate for 10 minutes at room temperature.
4. Briefly vortex the tube and then do a quick spin (less than 5000xg) to concentrate the liquid at the bottom.
5. Store the suspended plasmid at -20°C. The DNA is stable for at least one year from date of shipping when stored at -20°C.

RefSeq: [BC011069](#), [AAH11069](#)

RefSeq Size: 2815 bp

RefSeq ORF: 1490 bp

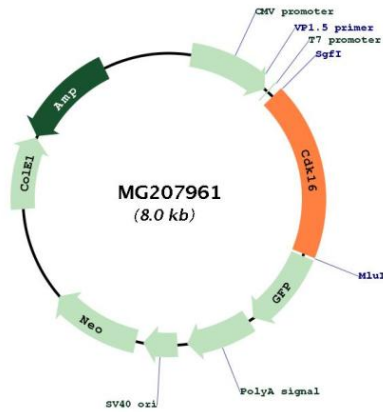
Locus ID: 18555

Cytogenetics: X 16.18 cM

Gene Summary:

Protein kinase that plays a role in vesicle-mediated transport processes and exocytosis. Can phosphorylate CCNY at 'Ser-336' (in vitro) (By similarity). Plays a role in the regulation of insulin secretion in response to changes in blood glucose levels. Regulates GH1 release by brain neurons. Phosphorylates NSF, and thereby regulates NSF oligomerization. Required for normal spermatogenesis. Regulates neuron differentiation and dendrite development. [UniProtKB/Swiss-Prot Function]

Product images:



Circular map for MG207961