

Product datasheet for **MG207938**

Pnkp (NM_021549) Mouse Tagged ORF Clone

Product data:

Product Type:	Expression Plasmids
Product Name:	Pnkp (NM_021549) Mouse Tagged ORF Clone
Tag:	TurboGFP
Symbol:	Pnkp
Synonyms:	1810009G08Rik; PNK
Mammalian Cell Selection:	Neomycin
Vector:	pCMV6-AC-GFP (PS100010)
E. coli Selection:	Ampicillin (100 ug/mL)



[View online »](#)

ORF Nucleotide Sequence:

>MG207938 representing NM_021549
 Red=Cloning site Blue=ORF Green=Tags(s)

TTTTGTAATACGACTCACTATAGGGCGGCCGGGAATTCGTCGACTGGATCCGGTACCGAGGAGATCTGCC
 GCC**CGCATCGCC**

ATGTCACAGCTTGGATCCCGGGCCGCCTGTGGCTGCAGAGCCCCACCGTGGGCCGCCCTATATTCC
 TGCCGTCGGATGGCCAAGCCCTGGTCTCGGTCGGGGACCCTGACCCAAGTGACGGACCGGAAGTGCTC
 CCGAAACCAAGTGGAGCTGATTGCAGACCTGAAAGCCGACAGTGGCAGTGAACAGCTGGGTGTTAAC
 CCGTCAACTGTTGGGGTCCATGAGTTGAAGCCAGGACTGTCTGGCTCTCTAAGCTTGGGGGATGTCCTTT
 ATCTGGTTAATGGCCTATATCCCCTGACCCTGCGTTGGGAAGAGCTCAGCACATCAGGATCCCAGCCAGA
 TGCTCCACCAGACACTCCTGGGGATCCGGAGGAGGAGAGGATACTGAGCCTCAGAAAAAGCGAGTTCGG
 AAATCCTCTCTTGGCTGGGAGAGCTTAAGAAGTTACTGGTGTTCACAGCGTCTGGGGTGAAGCCCCAGG
 GCAAGGTGGCTGCCTTTGACCTAGATGGGACCCTCATACCACCCGCTCTGGAAAGTCTTCCCCTAG
 CCCTAGTGACTGGAGATTCTGTACCCAGAGATCCAAAGAAGCTCCAGGAGCTGGCTGCTGAAGGCTAC
 AAGTTGGTAATCTTCACCAACCAATGGGCATCGGGCAGGCAAGCTGCCAGCAGAGGTGTTCAAGGGCA
 AGGTGGAAGCTGTATTGGAGAAGTTAGGGGTCCATTTACAGTGTGGTGGCAACACATGCAGGTCTAAA
 CCGAAAGCCAGTGAAGTGGCATGTGGGACCATCTGCAGGAGCAGGCCAACGAGGGCATCCCCTCTCGGTA
 GAGGACAGTGTCTTCGTGGGAGATGCAGCAGGGCGCCTAGCCAACGGCACCGGGGAGGAAAAAAGG
 ATTTCTCTTGTGCAGACCGCCTGTTTCGCCCTAACGTCGGCTGCCCTTTGCCACTCCGGAAGAGTTTTT
 CCTTAAGTGGCCGGCTGCCCGCTTTGAGCTTCCAGCTTTCGACCCGAGGACTATCTCCAGTGTGGGCC
 CTCTACCTCCAGAGTCCAGCTCTCTCTGAGCCCCAACCCAGAGGTGGTGGTGCAGTAGGATTCCTG
 GGGCCGCAAGTCCACTTTCATCCAGGAGCACCTAGTGTACAGTGGCTACGTCATGTGAACAGGAGAC
 GCTGGGCTCGTGGCAGCGCTGTGTGAGCTCATGCCAGGGCAGCTGAGGCAGGGGAAGCGAGTCTGATT
 GACAACACCAACCCAGATGTCCCAAGTCGGGCCAGGTACATCCAATGTGCCAAAGATGCAGGTGTGCCCT
 GCCGCTGTTTCAACTTCTGTGCTACAATAGAGCAGGCACGCCACAACAACAGGTTCCGTGAGATGACCGA
 CCCTTCGCATGCACCTGTGTCGGACATGGTCATGTTTAGCTACAGGAAGCAGTTTGGCCGCCACACTG
 GCTGAAGGCTTCTGGAGATCCTTGAGATTCCATTCCGGTTACAGGAGCATCTGGACCCGGCACTGCAGC
 GACTGTACCGCCAGTTTTCCGAGGGC

ACGCGTACGCGGCCGCTCGAG – GFP Tag – GTTTAA

Protein Sequence:

>MG207938 representing NM_021549
 Red=Cloning site Green=Tags(s)

MSQLGSRGRLWLQSPITGGPPPIFLPSDQALVLGRGPLTQVTRKCSRNOVELIADPESRTVAVKQLGVN
 PSTVGVHELKPLSGSLSLGDVLYLVNGLYPLTLRWEELSTSGSQPDAPPDTPGDPEEGEDTEPQKKRVR
 KSSLGWESLKKLLVFTASGVKPKQKVAADFLLDGLITTRSGKVFPPTSPSDWRILYPEIPKLLQELAAEGY
 KLVIFITNQMGIGRKLPAEVFKGKVEAVLEKLGVPFQVLVATHAGLNRKPVSGMWDHLQEANEGIPISV
 EDSVFGDAAGRLANWAPGRKKKDFSCADRLFALNVGLPFATPEEFFLKWPAARFELPAFDPRTISSAGP
 LYLPESSLLSPNPEVVAVGFPAGKSTFIQEHLSAGYVHVNRDLGSWQRCVSSQAALRQGRVVI
 DNTNPDVPSRARIQCAKDAGVPCRCFNFCATIEQARHNNRFREMTDPSHAPVSDMVMFSYRQFEPPTL
 AEGFLEILEIPFRLQEHLDPALQRLYRQFSEG

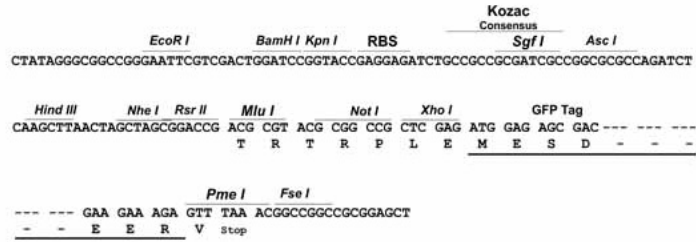
TRTRPLE – GFP Tag – V

Restriction Sites:

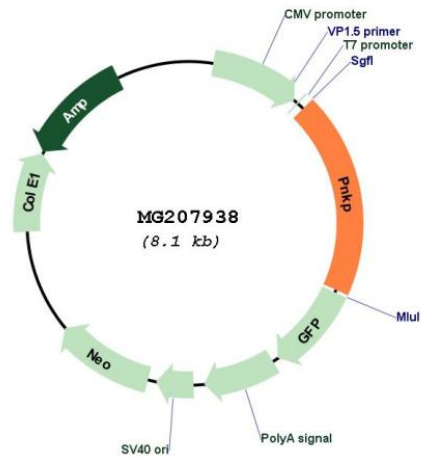
Sgfl-MluI

Cloning Scheme:

Cloning sites used for ORF Shutting:



Plasmid Map:



ACCN:	NM_021549
ORF Size:	1566 bp
OTI Disclaimer:	The molecular sequence of this clone aligns with the gene accession number as a point of reference only. However, individual transcript sequences of the same gene can differ through naturally occurring variations (e.g. polymorphisms), each with its own valid existence. This clone is substantially in agreement with the reference, but a complete review of all prevailing variants is recommended prior to use. More info
OTI Annotation:	This clone was engineered to express the complete ORF with an expression tag. Expression varies depending on the nature of the gene.
Components:	The ORF clone is ion-exchange column purified and shipped in a 2D barcoded Matrix tube containing 10ug of transfection-ready, dried plasmid DNA (reconstitute with 100 ul of water).
Reconstitution Method:	<ol style="list-style-type: none">1. Centrifuge at 5,000xg for 5min.2. Carefully open the tube and add 100ul of sterile water to dissolve the DNA.3. Close the tube and incubate for 10 minutes at room temperature.4. Briefly vortex the tube and then do a quick spin (less than 5000xg) to concentrate the liquid at the bottom.5. Store the suspended plasmid at -20°C. The DNA is stable for at least one year from date of shipping when stored at -20°C.
RefSeq:	NM_021549.2 , NP_067524.2
RefSeq Size:	2099 bp
RefSeq ORF:	1569 bp
Locus ID:	59047
Cytogenetics:	7 B3