

## Product datasheet for **MG207916**

### **Kcnf1 (NM\_201531) Mouse Tagged ORF Clone**

#### **Product data:**

Product Type:	Expression Plasmids
Product Name:	Kcnf1 (NM_201531) Mouse Tagged ORF Clone
Tag:	TurboGFP
Symbol:	Kcnf1
Synonyms:	Gm1182; Kv5.1
Mammalian Cell Selection:	Neomycin
Vector:	pCMV6-AC-GFP (PS100010)
E. coli Selection:	Ampicillin (100 ug/mL)



[View online »](#)

**ORF Nucleotide Sequence:**

>MG207916 representing NM\_201531  
 Red=Cloning site Blue=ORF Green=Tags(s)

TTTTGTAATACGACTCACTATAGGGCGGCCGGAATTCGTCGACTGGATCCGGTACCGAGGAGATCTGCC  
 GCC**CGATCGCC**

ATGGACGCATCTGCTGAGCAAAGCCTCCGGAGCCAGGCAGCAGGACTCCGTGGCAGGCGAAGACATTG  
 AGATCGTGGTAAATGTGGGGGGCGTGCGCAGGTGCTCTACGGAGACCTGCTCAGCCAGTACCCTGAGAC  
 CCGGTTGGCAGAGCTCATCAACTGTTTGGCGGGGGCTACGACACCATTTCTCTCTGTGCGACGATTAC  
 GATCCGGGCAAGCGCAATTCTACTTTGACCGGGACCCAGACGCGTTCAAGTGTGTCAATTGAGGTATACT  
 ATTTGGGGAGGTCCACATGAAGAAGGGCATTGCCCCATCTGCTTCAAGAACGAGATGGACTTCTGGAA  
 GGTGGACCTCAAATTCCTGGATGACTGTTGCAAGAGCCATCTGAGCGAGAAGCGGAGGAGCTGGAGGAG  
 ATCGCGCGCAGGGTGCAGCTCATCTTGGACGACCTGGGTGTTGACGCTGCTGAGGGCCGCTGGCGCCGCT  
 GCCAGAAGTGTGTCTGGAAGTTCCTAGAGAAGCCGGAGTCTTCATGCCCTGCGCGGGTGGTGGCGTTCT  
 ATCCTTCTGCTCATCCTTGTCTCCTCCGTGGTCAATGTGCATGGTACCATACCCGAGCTGCAAGTGGTG  
 GACTCCGAAGGCAACCGGTGGAGCACCAACGCTGGAGAACGTAGAGACGGCTTGATCGGCTGGTTCA  
 CTCTGGAGTACCTGCTGCGCCTTCTCATCGCCAACAAGCTTCACTTTGCCCTGTCCTTCATGAACAT  
 CGTGGATGTGCTGGCCATTCTCCCTTCTATGTGAGCCTCACACTCACGCACCTGGGCGCAAGAATGATG  
 GAGCTGACCAACGTACAGCAGGCAGTGCAGGCCCTGAGGATCATGCGCATCGCACGCATCTTCAAAGTGG  
 CCCGCCACTCCTCCGGCTGCAGACCCTCACCTACGCCCTCAAGCGCAGTTTCAAGGAAGTGGGGCTATT  
 GCTTATGTATCTGGCCGTGGGCATCTTCGTCTTTCCGCACTGGGCTACACCATGGAGCAGAGCCATCCT  
 GAAACTCTGTTCAAGAGCATCCCCAGTCTTCTGGTGGGCTATCATCACCATGACCACAGTGGGGTAATTGC  
 CATTGCCCTGCCATTCACCCCATTAACAACCTTGTGAGGTAACAACAACGAGTGTCTGAGGAG  
 ACGGCAGCCAAGCATGAGCTGGAGCTGATGGAGCTCAACTCCAGCAGTGCAGAAGGCAAGCCCGGGGTT  
 CTCGCAGCAGCTGGACACCCTGCCCCAGAGCCTGCTGCCAGGGAGGGGCAAGCTGGGGTAGCCGGCT  
 GAAGCTCTCACACAGCGATACCTTCATCCCTGCTGACAGAGGAGAAGCATCATAGGACCCGCCTACAG  
 AGTTGCAAG

AG**CGGACCG**ACGCGTACGCGGCCGCTCGAG - GFP Tag - GTTTAA

**Protein Sequence:**

>MG207916 representing NM\_201531  
 Red=Cloning site Green=Tags(s)

MDASAEQSLPEPGSQDSVAGEDIEIVVNVGGVRQVLYGDLLSQYPETRLAELINCLAGGYDTIFSLCDDY  
 DPGKREFYFDRDPDAFKCVIEVYFGEVHMKKGICPICFKNEMDFWKVDLKLDDCCCKSHLSEKREELEE  
 IARRVQLILDDLGVDAEGRWRRQCQKCVWKFLEKPESSCPARVVAVLSFLLILVSSVVMCMGTIPELQVV  
 DSEGNRVEHPTLENVETACIGWFTLEYLLRLFSSPNKLHFALSFMNIVDVLAAILPFYVSLTLTHLGARM  
 ELTNVQAVQALRIMRIARIFKLARHSSGLQTLTYALKRSFKELGLLMYLAVGIFVFSALGYTMEQSH  
 ETLFKSIQSFVWAIITMTTVGYGDIYPKTTLGLNAAISFLCGVIAIALPIHPIINNFVRYNQRVLE  
 TAAKHELELMELNSSSAEGKPGGSRSDLTLPPEPAAREGPSWGSRLKLSHSDTFIPLLTEEKHHRTRLQ  
 SCK

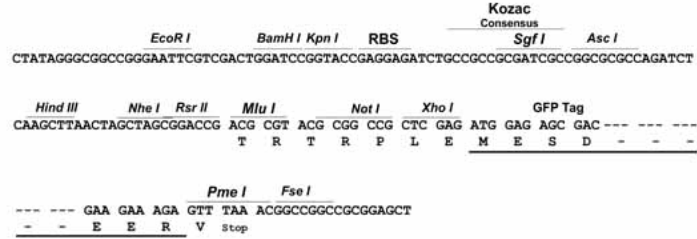
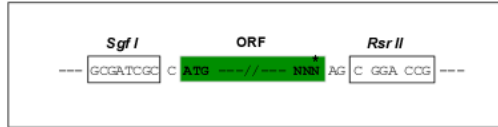
SGP**TRRRLE** - GFP Tag - V

**Restriction Sites:**

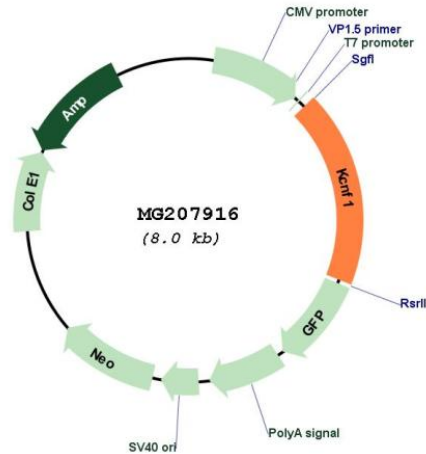
Sgfl-RsrII

Cloning Scheme:

Cloning sites used for ORF Shuttling:



## Plasmid Map:



ACCN: NM\_201531

ORF Size: 1479 bp

OTI Disclaimer: The molecular sequence of this clone aligns with the gene accession number as a point of reference only. However, individual transcript sequences of the same gene can differ through naturally occurring variations (e.g. polymorphisms), each with its own valid existence. This clone is substantially in agreement with the reference, but a complete review of all prevailing variants is recommended prior to use. [More info](#)

OTI Annotation: This clone was engineered to express the complete ORF with an expression tag. Expression varies depending on the nature of the gene.

Components: The ORF clone is ion-exchange column purified and shipped in a 2D barcoded Matrix tube containing 10ug of transfection-ready, dried plasmid DNA (reconstitute with 100 ul of water).

**Reconstitution Method:**

1. Centrifuge at 5,000xg for 5min.
2. Carefully open the tube and add 100ul of sterile water to dissolve the DNA.
3. Close the tube and incubate for 10 minutes at room temperature.
4. Briefly vortex the tube and then do a quick spin (less than 5000xg) to concentrate the liquid at the bottom.
5. Store the suspended plasmid at -20°C. The DNA is stable for at least one year from date of shipping when stored at -20°C.

**RefSeq:** [NM\\_201531.2](#)

**RefSeq Size:** 4456 bp

**RefSeq ORF:** 1518 bp

**Locus ID:** 382571

**UniProt ID:** [Q7TSH7](#)

**Cytogenetics:** 12 A1.1

**Gene Summary:** Putative voltage-gated potassium channel.[UniProtKB/Swiss-Prot Function]