

## Product datasheet for **MG207895**

### Thra (BC046795) Mouse Tagged ORF Clone

#### Product data:

Product Type:	Expression Plasmids
Product Name:	Thra (BC046795) Mouse Tagged ORF Clone
Tag:	TurboGFP
Symbol:	Thra
Synonyms:	Nr1a1, T3R[a], T3Ralpha
Mammalian Cell Selection:	Neomycin
Vector:	pCMV6-AC-GFP (PS100010)
E. coli Selection:	Ampicillin (100 ug/mL)



[View online »](#)

**ORF Nucleotide Sequence:**

>MG207895 representing BC046795  
 Red=Cloning site Blue=ORF Green=Tags(s)

TTTTGTAATACGACTCACTATAGGGCGGCCGGAATTCGTCGACTGGATCCGGTACCGAGGAGATCTGCC  
 GCC**GCGATCGCC**

ATGGAACAGAAGCCAAGCAAGGTGGAGTGTGGGTGAGCCAGAGGAGAAGCAAGTCCAGGTCAACAGATG  
 GAAAGCGAAAAAGAAAGAACGGCCAATGTCCCCTGAAAAGCAGCATGTCAGGGTATATCCCTAGTTACCT  
 GGACAAAGACGAGCAGTGTGTCGTGTGGGGACAAGGCCACCGTTTACTACTACCCTGTATCACTTGT  
 GAGGGCTGCAAGGGCTTCTTTCGCCGACAATCCAGAAGAATCTCCATCCCACCTATTCTGCAAGTATG  
 ACAGCTGTGTGCATCGACAAGATCACCCGGAATCAGTGCCAGCTGTGCCGTTCAAGAAGTGCATTGC  
 TGTGGGCATGGCCATGGACTTGGTTCTAGATGATTCGAAGCGGGTGGCCAAACGCAAGCTGATTGAGCAG  
 AACCGGGAGAGGGCGAAAGGAGGAGATGATTCGCTCACTGCAGCAGCGACCAGAGCCACTCTGAAG  
 AGTGGGACCTGATACATGTTGCTACAGAGGCCATCGCAGCACTAACGCCAGGGCAGCCATTGAAACA  
 GAGGCGAAAATTCTGCCGATGACATTGGCCAGTCACCTATTGTCTCCATGCCGACGGAGACAAGGTA  
 GACCTAGAGGCCCTCAGCGAGTTTACCAAGATCATCACCCGGCCATCACGCGCTGGTGGACTTTGCCA  
 AAAAAGTCCCATGTTCTCCGAGCTGCCTTGCAGAACAGATCATCCTCCTGAAGGGCTGCTGCATGGA  
 GATCATGTCCCTGCGGGCAGCTGTCCGCTACGACCCTGAGAGTGACACCCTGACCCTGAGTGGGGAGATG  
 GCGGTTAAGCGGGAACAGCTCAAGAATGGTGGCTTGGGTGTGGTCTCTGACGCCATCTTTGAACTGGGCA  
 AGTCACTCTCTGCCTTTAACCTGGATGACACGGAAGTGGCTCTGCTGCAGGCTGTGCTGTAATGTCAAC  
 AGACCGCTCCGGCCTGCTGTGCGTGGACAAGATCGAGAAGAGTCAAGAGGCTACCTGCTGGCGTTTGGAG  
 CACTACGTCAACCACCGCAAACAACATTCCGCACTTCTGGCCAAGCTGCTGATGAAGGAGAGAGAAG  
 TGCAGAGTTCGATTCTGTACAAGGGGGCAGCGGCAGAGCCGGCCGGGGGCTACTGGCGCTCCACCC  
 GGAAGGACAGCAGCTTCTCGGAATGCATGTTGTTTCAGGGTCCGACGGTCCGGCAGCTTGAGCAGCAGCTT  
 GGTGAAGCGGAAGTCTCCGAGGGCCGGTCTTTCAGCACAGAGCCGAAGAGCCCGCAGCAGCGTCTCC  
 TGGAGCTGCTCCACGAAGCGGAATTCTCCATTCCCGAGCGGTCTGTGGGAAGACGACAGCAGTGAAGG  
 GAGCTCCCTGAGCTCCTCTGACACGGAGGACCGAGGTCTGCGAGGACCAGGCAGGCAAGGCAGCC  
 TCTCCC

**ACGCGTACGCGGCCGCTCGAG** – GFP Tag – GTTTAA

**Protein Sequence:**

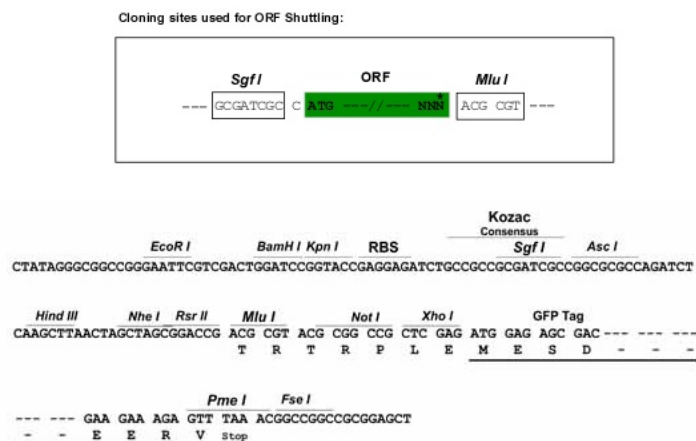
>MG207895 representing BC046795  
 Red=Cloning site Green=Tags(s)

MEQKPSKVECGSDPEENSARSPDGKRKRKNGQCPLKSSMSGYIPSYLDKDEQCVCGDKATGYHYRCITC  
 EGCKGFFRRTIQKNLHPTYSCKYDSCCVIDKITRNQCQLCRFKKCIAVGMAMDVLDDSKRVAKRKLIEQ  
 NRERRRKEEMIRSLQQRPEPTPEEWDLIHVATEHRSTNAQGSWVKQRRKFLPDDIGQSPIVSMPDGDV  
 DLEAFSEFTKIIITPAITRVVDFAKKLPFSELPCEQIILLKGCMEIMSLRAAVRYDPESDTLTLSGEM  
 AVKREQLKNGGLGVVSDAIFELGKSLSAFNLDDEVALQLQAVLLMSTDRSGLLCVDKIEKSQEAYLLAFE  
 HYVNRKHNIPIHFWPKLLMKEREVQSSILYKAAAEGRPGGSLGVHPEGQQLGMHVQGPVQRLEQQL  
 GEAGSLRGPVLQHQSPKSPQRLLELLHRSGILHSRAVCGEDDSSEASSLSSSDTEDTEVCEDQAGKAA  
 SP

**TRTRPLE** – GFP Tag – V

**Restriction Sites:**

Sgfl-MluI

**Cloning Scheme:**


**ACCN:** BC046795

**ORF Size:** 1478 bp

**OTI Disclaimer:** The molecular sequence of this clone aligns with the gene accession number as a point of reference only. However, individual transcript sequences of the same gene can differ through naturally occurring variations (e.g. polymorphisms), each with its own valid existence. This clone is substantially in agreement with the reference, but a complete review of all prevailing variants is recommended prior to use. [More info](#)

**OTI Annotation:** This clone was engineered to express the complete ORF with an expression tag. Expression varies depending on the nature of the gene.

**Components:** The ORF clone is ion-exchange column purified and shipped in a 2D barcoded Matrix tube containing 10ug of transfection-ready, dried plasmid DNA (reconstitute with 100 ul of water).

**Reconstitution Method:**

1. Centrifuge at 5,000xg for 5min.
2. Carefully open the tube and add 100ul of sterile water to dissolve the DNA.
3. Close the tube and incubate for 10 minutes at room temperature.
4. Briefly vortex the tube and then do a quick spin (less than 5000xg) to concentrate the liquid at the bottom.
5. Store the suspended plasmid at -20°C. The DNA is stable for at least one year from date of shipping when stored at -20°C.

**RefSeq:** [BC046795](#), [AAH46795](#)

**RefSeq Size:** 2440 bp

**RefSeq ORF:** 1478 bp

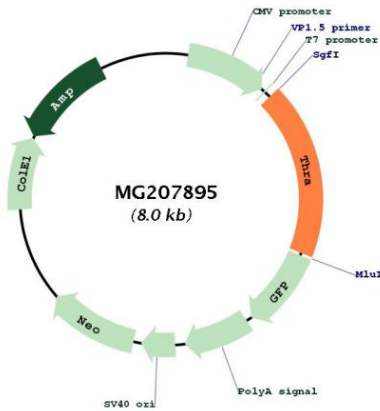
**Locus ID:** 21833

**Cytogenetics:** 11 62.58 cM

**Gene Summary:**

The protein encoded by this gene is one of several nuclear hormone receptors that bind thyroid hormones such as triiodothyronine and thyroxine with high affinity. The encoded protein is a transcription factor that can activate or repress transcription. Several alternatively spliced transcript variants of this gene have been described, but the full-length nature of some of these variants has not been determined. [provided by RefSeq, Sep 2015]

**Product images:**



Circular map for MG207895