

## Product datasheet for **MG207890**

### Tom1 (NM\_011622) Mouse Tagged ORF Clone

#### Product data:

Product Type:	Expression Plasmids
Product Name:	Tom1 (NM_011622) Mouse Tagged ORF Clone
Tag:	TurboGFP
Symbol:	Tom1
Mammalian Cell Selection:	Neomycin
Vector:	pCMV6-AC-GFP (PS100010)
E. coli Selection:	Ampicillin (100 ug/mL)



[View online »](#)

**ORF Nucleotide Sequence:**

>MG207890 representing NM\_011622  
 Red=Cloning site Blue=ORF Green=Tags(s)

TTTTGTAATACGACTCACTATAGGGCGGCCGGAATTCGTCGACTGGATCCGGTACCGAGGAGATCTGCC  
 GCC**CGGATCGCC**

ATGGACTTTCTCCTGGGAAATCCGTTCCAGTCTCCGGTGGGACAACGGATCGAGAAAGCTACAGATGGT  
 CCCTGCAGAGCGAGGACTGGGCCCTCAACATGGAAATCTGTGACATCATCAACGAGACGGAGGAAGGCC  
 CAAAGATGCCTCCGAGCAGTGAAGAAGCGAATTATGGGGAATAAGAATTTCCATGAGGTCATGCTGGCC  
 CTTACGGTCTTGAAACATGTGTTAAGAACTGTGGGCACCGCTTCCATGTAAGTGGCCAAACCAGGACT  
 TTGTAGAGAATGTGCTGGTGAAGACCATCTGCCGAAGAACAATCCACCCACCATTTGTGCATGACAAGGT  
 GTTGAACCTCATCCAGTCTGGGCTGACGCGTCCGACGCTCACCTGATTTGACAGGTGTTGTTGCTGTC  
 TACGAGGACCTGCGAAGGAAGGGCTAGAATTTCCATGACTGACCTGGACATGCTGTGCCCATCCACA  
 CACCCAGAGAACTGTATCAACTCAGAGACCATCCAGACAGAACTCTGTGAGTTCCAACACCAGTCA  
 GCGTGGAGACCTGAGCCAGCATGCCACCCCTCTGCCACTCCAGCTGTTCTCCCGGTGACTCACCCATC  
 ACACCGACTCCTGAGCAGATTGGGAAGCTGCGCAGTGAGCTGGAGATGGTGGAGCGAAACGTGCGAGTGA  
 TGTGAGAGATGCTGACAGAGCTGGTGCCACCCAGGTAGAGCCTGCAGACCTGGAGCTACTACAGGAACT  
 GAACCGCACCTGCCGTGCCATGCAGCAGCGGATCCTGGAGCTTATCCCACGCATCTCCAATGAGCAGCTG  
 ACGGAGGAGCTGCTCATGATCAACGACAACCTCAACAACGTGTTTCTGCGCCATGAACGGTTTGAACGCT  
 TCCGAACAGGCCAGACTGCTAAGGCCTCCAGTGAAGCTGAGCTAGCTACTGACCTGATTGACATGGGTCC  
 TGACCCCGCAGCCACAACAACCTCTCATCTCAACTGGCAGGAATGAACCTTGGCTCCAGAAGTGTGAGA  
 GCTGGCCTGCAGTCTCTGGAGACCTCAGGTCACCTGGAAGATGACTTTGACATGTTTGTCTGACTCGGG  
 GCAGCTACTGGCTGACCAACGGAAGGGGTCAAATATGAAGCTCCCAAAACCACAGACTGGCTGGCTGG  
 GGCCCTAGATGCCCGGCAGCAGACACCGGAGCGATCCCAGCCACTCAGGCCCGCATCATGGAGGACATT  
 GAGCAGTGGCTGTCCACAGATGTGGGAACAGTGTGAGGAGCCCTCTGGTGTACCAGTGAAGAATTTG  
 ACAAATTTCTGGAAGAACGAGCCAAAGCTGCTGATCGACTTCCAACTGGCCAGCCCTTTCAGCCGAGGG  
 ACCCCCCAGACCATCTCTGGAACAGCCCTCGGAGGAAGACCCAGGAGAAGGACGATGACATGCTGTTT  
 GCCTTA

AG**CGGACCG**ACGCGTACGCGGCCGCTCGAG - GFP Tag - GTTTAA

**Protein Sequence:**

>MG207890 representing NM\_011622  
 Red=Cloning site Green=Tags(s)

MDFLLGNPFSSPVGQRIEKATDGSLSQSEDWALNMEICDIINETEEGPKDAFRAVKKRIMGNKNFHEVMLA  
 LTVLETCVKNCGHRFHVLVANQDFVENLVRTILPKNNPPTIVHDKVLNLIQSWADAFRSPDLTGVVAV  
 YEDLRRKGLEFPMTDLMLSPIHTPQRTVFNSETPSRQNSVSSNTSQRGDLQSHATPLPTPAVLPGDSPI  
 TPTPEQIGKLRSELEMVSGNVRVMSEMLTEL VPTQVEPADLELLQELNRTC RAMQQRIELIPRISNEQL  
 TEELLMINDNLNNVFLRHERFERFRGTAKASSEAEALATDLIDMGPDPAATNNLSSQLAGMNLGSRSVR  
 AGLQSLETSGHLEDDFDMFALTRGSSLADQRKGVKYEAPQTTDGLAGALDARQQSTGAIPATQARIMEDI  
 EQWLSTDVGNSAEPPSGVTSEEFDKFLEERAKAADRLPNLASPSAEGPPRPPSGTAPRRKTQEKDDMLF  
 AL

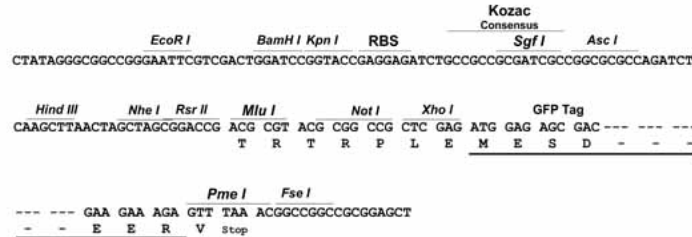
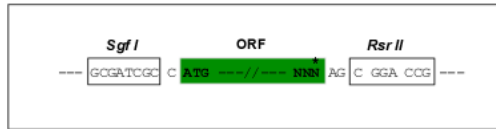
SGP**TRRRLE** - GFP Tag - V

**Restriction Sites:**

Sgfl-RsrII

**Cloning Scheme:**

Cloning sites used for ORF Shuttling:


**ACCN:** NM\_011622

**ORF Size:** 1476 bp

**OTI Disclaimer:** The molecular sequence of this clone aligns with the gene accession number as a point of reference only. However, individual transcript sequences of the same gene can differ through naturally occurring variations (e.g. polymorphisms), each with its own valid existence. This clone is substantially in agreement with the reference, but a complete review of all prevailing variants is recommended prior to use. [More info](#)

**OTI Annotation:** This clone was engineered to express the complete ORF with an expression tag. Expression varies depending on the nature of the gene.

**Components:** The ORF clone is ion-exchange column purified and shipped in a 2D barcoded Matrix tube containing 10ug of transfection-ready, dried plasmid DNA (reconstitute with 100 ul of water).

**Reconstitution Method:**

1. Centrifuge at 5,000xg for 5min.
2. Carefully open the tube and add 100ul of sterile water to dissolve the DNA.
3. Close the tube and incubate for 10 minutes at room temperature.
4. Briefly vortex the tube and then do a quick spin (less than 5000xg) to concentrate the liquid at the bottom.
5. Store the suspended plasmid at -20°C. The DNA is stable for at least one year from date of shipping when stored at -20°C.

**RefSeq:** [NM\\_011622.3](#), [NP\\_035752.1](#)
**RefSeq Size:** 2253 bp

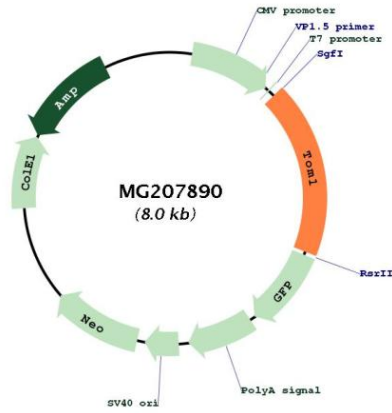
**RefSeq ORF:** 1479 bp

**Locus ID:** 21968

**UniProt ID:** [O88746](#)
**Cytogenetics:** 8 C1

Gene Summary: May be involved in intracellular trafficking. Probable association with membranes. [UniProtKB/Swiss-Prot Function]

Product images:



Circular map for MG207890