

Product datasheet for **MG207876**

Dync1li2 (NM_001013380) Mouse Tagged ORF Clone

Product data:

Product Type:	Expression Plasmids
Product Name:	Dync1li2 (NM_001013380) Mouse Tagged ORF Clone
Tag:	TurboGFP
Symbol:	Dync1li2
Synonyms:	AA409702; C920003I06; Dncli2; Dncllic2; LIC2
Mammalian Cell Selection:	Neomycin
Vector:	pCMV6-AC-GFP (PS100010)
E. coli Selection:	Ampicillin (100 ug/mL)



[View online »](#)

ORF Nucleotide Sequence:

>MG207876 representing NM_001013380
 Red=Cloning site Blue=ORF Green=Tags(s)
 TTTTGAATACGACTCACTATAGGGCGGCCGGGAATTCGTCGACTGGATCCGGTACCGAGGAGATCTGCC
 GCC**CGGATCGCC**

ATGGCCCGGTGGGGTGGAGAAGAAGCTGCTGCTGGGTCCCAACGGGCCCGCAGTGGCGGCCCGCGGC
 ACCTGACAAGTGAAGAGGAGGAAGGCCAGAGTCTATGGTCTTCGATCTTGAGCGAAGTGCCACCGGTGC
 CAGGTCCAAGCTGCCGTCCGGCAAAAAACATTCTGGTGTTCGGTGAAGATGGTTCTGGTAAGACAACCTCTC
 ATGACCAAACCTCAAGGAGCAGAACACGGCAAAAAAGGAAGAGGCTTAGAGTATCTTTACCTCAGCGTTC
 ATGATGAGGACCGGGACGATCACACACGCTGCAATGTGTGGATTTAGATGGAGACCTCTACCATAAAGG
 CCTGCTGAAATTTGCAGTTTCAGCTGAGTCTCTGCGGGAGACCCTGGTCATTTTTGTTGCCGACATGTCT
 CGACCTTGACGATAATGGAGTCTCTGCAGAAGTGGGCTAGTGTTCACGGGAGCACATTGACAAGATGA
 AGATTCCACCGGAGGAGATGCGGGATCTGGAACGGAAATTTATGAAAGAGTTTCAAGATTATATCGAGCC
 TGAAGAAGGTTGTCAGGGTTCCCCACAGAGAAGAGGGCCTCTGACCTCAGGCTCAGACGAAGACAGTGT
 GCCTCCCTCTGGGTGACAACGTGCTGACTCATAACCTGGGGATCCCAGTGTGGTGGTGTGCACAAAGT
 GTGATGCCATGAGCGTCTTGAGAAGGAGCACGATTACAGGGACGAGCACCTGGACTTATCCAGGGCGCA
 CCTGCGGAGATTCTGCCTCCAGTATGGAGCAGCCTTGATTTACACCTCAGTGAAGGAAGAGAAAAACCTT
 GACTTGCTGTATAAGTACATTGTTACATAAAACCTATGGCTTCCACTTTACCATACCCGCCTTAGTTGTGG
 AAAAGGACGCGGTTTTTACCTGCAGGCTGGGACAATGAAAAGAAAATAGCTATTTTACATGAAAAATTT
 TACAACCGTGAAGCCAGAAGACGCGTATGAAGATTTTATTGTAAGCCGCTGTGAGAAAGCTGGTCCAT
 GACAAAAAGTTGGCAGCGGAGGATGAGCAGGTGTTCTAATGAAGCAACAGTCACTCCTTGCCAAGCAGC
 CTGCCACGCCACAAGAACCTCCGAATCCCTGCCAGAGACCCTCTGGCTCTCCAAGGACACAGGGTCTG
 GGTGGACCAGCTAGTGTACCAAGTGCCTCCCGGAACTTCAGTAAAGAAGCCAGATCCAAACATCAAA
 AATAATGCGGCAAGTGAAGGGTATTGGCCAGTCTTCAATAGTCTGTTGAGTAAAAAACAGGCTCTC
 CCGGAAGTCTAGTGTGGTGGAGTGCAGAGCACAGCCAAGAAGTCAAGGACAAAAGACTGTGTTGTCAAA
 TGTTTCAGGAAGAAGTGGATAGAATGACTCGAAAGCCAGACTCCATGGTAACAACTCTTCAACAGAAAAT
 GAAGCC

AGCGGACCGACGCGTACGCGGCCGCTCGAG - GFP Tag - GTTTAA

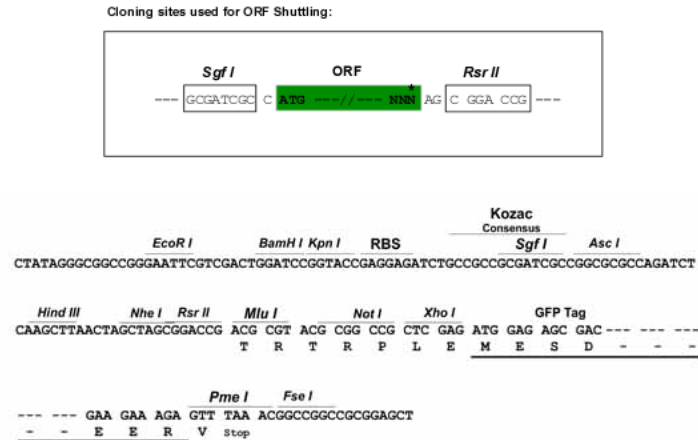
Protein Sequence:

>MG207876 representing NM_001013380
 Red=Cloning site Green=Tags(s)
 MAPVGVKLLLLGPNPVAAGDLTSEEEGQSLWSSILSEVSTRARSKLPSGKNILVFGEDGSGKTTL
 MTKLQGAEHGKKGRGLELYLSVHDEDRDDHTRCNVWILDGDLYHKGLLKFAVSAESLRETLVIFVADMS
 RPWTIMESLQKASVLRHIDKMKIPPEEMRDLERKFMKEFQDYIEPEEGCQSPQRRGPLTSGSDEDSV
 ALPLGDNVLTNHLGIPVLVVCTKCDAMSVLEKEHDYRDEHLDFIQAHLRRFCLQYGAALIYTSVKEEKNL
 DLLLYKIVHKTYGFHFTIPALVVEKDAVFIAGWDNEKKIAILHENFTTVKPEDAYEDFIVKPPVRKLVH
 DKKLAAEDEQVFLMKQSSLLAKQPATPRTSESPARGPSGSPRTQGRGGPASVPSASPGTSVKKPDPNIK
 NNAASEGVLASFFNSLLSKKTGSPGSPSAGGVQSTAKKSGQKTVLSNVQEELDRMTRKPDMSMTNSSTEN
 EA

SGPTRRRLE - GFP Tag - V

Restriction Sites:

Sgfl-RsrII

Cloning Scheme:


ACCN: NM_001013380

ORF Size: 1476 bp

OTI Disclaimer: The molecular sequence of this clone aligns with the gene accession number as a point of reference only. However, individual transcript sequences of the same gene can differ through naturally occurring variations (e.g. polymorphisms), each with its own valid existence. This clone is substantially in agreement with the reference, but a complete review of all prevailing variants is recommended prior to use. [More info](#)

OTI Annotation: This clone was engineered to express the complete ORF with an expression tag. Expression varies depending on the nature of the gene.

Components: The ORF clone is ion-exchange column purified and shipped in a 2D barcoded Matrix tube containing 10ug of transfection-ready, dried plasmid DNA (reconstitute with 100 ul of water).

Reconstitution Method:

1. Centrifuge at 5,000xg for 5min.
2. Carefully open the tube and add 100ul of sterile water to dissolve the DNA.
3. Close the tube and incubate for 10 minutes at room temperature.
4. Briefly vortex the tube and then do a quick spin (less than 5000xg) to concentrate the liquid at the bottom.
5. Store the suspended plasmid at -20°C. The DNA is stable for at least one year from date of shipping when stored at -20°C.

RefSeq: [NM_001013380.1](#), [NP_001013398.1](#)

RefSeq Size: 3145 bp

RefSeq ORF: 1479 bp

Locus ID: 234663

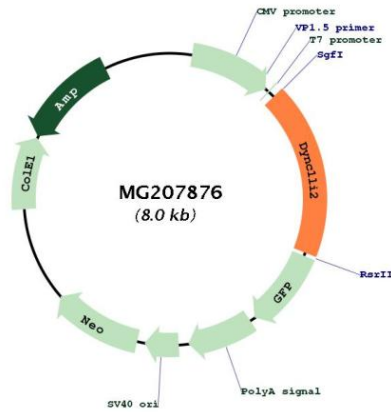
UniProt ID: [Q6PDL0](#)

Cytogenetics: 8 53.04 cM

Gene Summary:

Acts as one of several non-catalytic accessory components of the cytoplasmic dynein 1 complex that are thought to be involved in linking dynein to cargos and to adapter proteins that regulate dynein function. Cytoplasmic dynein 1 acts as a motor for the intracellular retrograde motility of vesicles and organelles along microtubules. May play a role in binding dynein to membranous organelles or chromosomes (By similarity).[UniProtKB/Swiss-Prot Function]

Product images:



Circular map for MG207876