

## Product datasheet for **MG207873**

### Lrfn1 (NM\_030562) Mouse Tagged ORF Clone

#### Product data:

Product Type:	Expression Plasmids
Product Name:	Lrfn1 (NM_030562) Mouse Tagged ORF Clone
Tag:	TurboGFP
Symbol:	Lrfn1
Synonyms:	BC004018; SALM2; Semo1
Mammalian Cell Selection:	Neomycin
Vector:	pCMV6-AC-GFP (PS100010)
E. coli Selection:	Ampicillin (100 ug/mL)



[View online »](#)

**ORF Nucleotide Sequence:**

>MG207873 representing NM\_030562  
 Red=Cloning site Blue=ORF Green=Tags(s)

TTTTGTAATACGACTCACTATAGGGCGGCCGGAATTCGTCGACTGGATCCGGTACCGAGGAGATCTGCC  
 GCC**GCGATCGCC**

ATGGCTCCAGGCCCTTCTCCTCCAGGCTCTTCTCGCCACCACCTGCTGCTCTTCCCTTTCTGCTGTTGC  
 TCTGGCAGGAGCATCTCGCAGCCAGCCCTGCCCGGTCGCTGCATCTGTGAGAAGCTGGCACCTACGCT  
 GACCATGTGTGTGCGAAGACGGCCTGCTCTTTGTGCCACCCGCCATCGACAGGCGTGTGGTAGAGCTG  
 CGGCTCACTGACAATTCTTGCCTGTGCGTCGTCGAGACTTCGCAATATGACCAGCCTGGTCCACC  
 TCACCCTGTCTCGAAACACCATTTGGCCAGGTAGCAGCCGGCGCCTTTGCTGACCTCCGGGCTCTCCGGC  
 CCTGCACCTTGACAGCAACCGCTGGCAGAGGTGAGAGGGGATCAGCTCCGAGGCTTGGTAACCTCCGC  
 CACTTGATCTCGCAACAATCAGATCCGTAAGGTGGAGTCGGCAGCCTTTGACGCTTCTGTCCACCG  
 TGGAGGACCTGGATCTATCCTACAACAACCTGGAGGCACTGCCATGGGAGGCGGTGGTCCAGATGGTGAA  
 CTTGAACACCCTCAGCTGGACCACAACCTCATTGATCACATTGGGAGGGCACCTTCGTGCAGCTGCAC  
 AAACCTCGTGCCTGGACATGACCTCCAACCGTCTACATAAATTGCCCCCGACGACTGTTCTGAGGT  
 CCCAGGGCGGTGGGCCAAGCCACCCACCCATTGACGGTCAGCTTCGGTGGCAACCCGCTGCACCTGCAA  
 CTGTGAACTGCTCTGGCTTCGGCGCCTGACCAGGGAGGACGACTTGGAGACGTGTGCCACGCCGAGCAT  
 CTCACTGACCGCTATTTCTGGTCCATCCCGGAGGAGGAATTTCTATGTGAGCCCCGCTCATCACACGGC  
 AAGCAGGGGGCCGGCCCTGGTGGTAGAGGGCCAGGCTGTGAGTCTGCGCTGCCGGGCTGTGGGTGACCC  
 CGAGCCCGTGGTGCATTTGGTGGCACCTGATGGGCGGCTGCTGGGAACCTCAGCCGACTCGGGTCCGT  
 GGTGACGGAACGCTGGATGTGACTATCACACCCTGAGGGACAGCGGTACCTTCACTTGCATAGCCTCCA  
 ATGCTGCGGGGAAGCCACGGCACCTGTGGAGGTATGTGTGGTACCTTGCACACTGAGGGCCCCCACC  
 CGCTGCCCGCCGCTCTCACTGAACCTGGTCTTCTGACATCGCCACACCAGGCAGACCTGGTGCCAAC  
 GACTCAGCCACTGAGCGCAGGCTTGTGGCTGCTGAACTCACGTCTAGCTCTGTGCTCATCCGCTGGCCGG  
 CCCAGAGGCCAGTGCCTGGCATCCGTATGTACCAAGTGAATACAACAGCTCTGCAGATGACTCCCTAGT  
 CTACAGTTCTAGCTGTCTGGAACCTCACTATGTAGACCAGGATGGCCTTGAATCAGAGTCCGCTTGTCT  
 TCTGCC

**ACGCGTACGCGGCCGCTCGAG** – GFP Tag – GTTTAA

**Protein Sequence:**

>MG207873 representing NM\_030562  
 Red=Cloning site Green=Tags(s)

MAPGPFSSRLFSPPPAALPFLLLLWAGASRSQPCPRGICQNVAPTLTMLCAKTGLLFVPPAIDRRVVEL  
 RLTDNFIAAVRRRDFANMTSLVHLTLNRNTIGQVAAGAFADLRALRALHLDNSNRLAEVRGDQLRGLGNLR  
 HLILGNNQIRKVESAAFDALSTVEDLDLSYNNLEALPWEAVGQMVNLTLDHNLIDHIAEGTFVQLH  
 KLVRLDMTSNRLHKLPPDGLFLRSQGGPKPPTPLTVSFGGNPLHCNCELLWLRRLTREDDELETCATPEH  
 LTRDYFWSIPEEEFLCEPPLITRQAGGRALVVEGQAVSLRCRAVGDPEPVVHWVAPDGRLLGNSRTRVR  
 GDGTLDVITITLRLDSGFTFCIASNAAGEATAPVEVCVPLPLMAPPPAAPPLTEPGSSDIATPGRPGAN  
 DSATERRLVAAELTSSSVLIRWPAQRVPGIRMYQVQYNSADDSLVYSSSCPPTHYVDQDGLAIRVPLA  
 SA

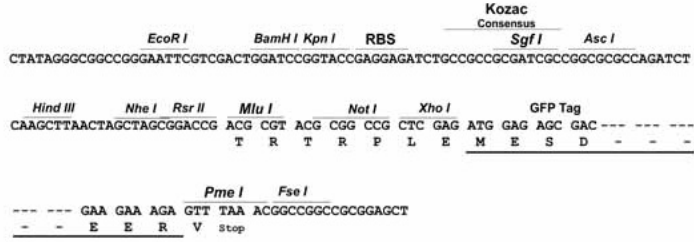
**TRTRPLE** – GFP Tag – V

**Restriction Sites:**

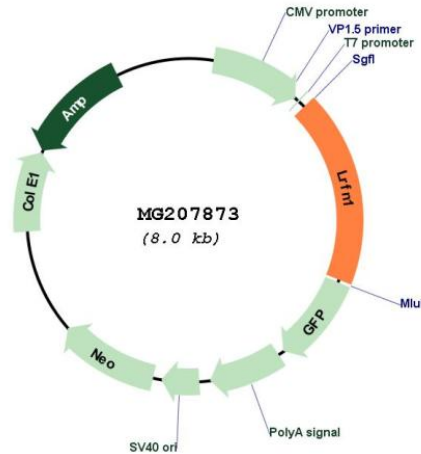
Sgfl-Mlul

Cloning Scheme:

Cloning sites used for ORF Shutting:



Plasmid Map:



ACCN: NM\_030562

ORF Size: 1476 bp

OTI Disclaimer: The molecular sequence of this clone aligns with the gene accession number as a point of reference only. However, individual transcript sequences of the same gene can differ through naturally occurring variations (e.g. polymorphisms), each with its own valid existence. This clone is substantially in agreement with the reference, but a complete review of all prevailing variants is recommended prior to use. [More info](#)

OTI Annotation: This clone was engineered to express the complete ORF with an expression tag. Expression varies depending on the nature of the gene.

Components: The ORF clone is ion-exchange column purified and shipped in a 2D barcoded Matrix tube containing 10ug of transfection-ready, dried plasmid DNA (reconstitute with 100 ul of water).

**Reconstitution Method:**

1. Centrifuge at 5,000xg for 5min.
2. Carefully open the tube and add 100ul of sterile water to dissolve the DNA.
3. Close the tube and incubate for 10 minutes at room temperature.
4. Briefly vortex the tube and then do a quick spin (less than 5000xg) to concentrate the liquid at the bottom.
5. Store the suspended plasmid at -20°C. The DNA is stable for at least one year from date of shipping when stored at -20°C.

**RefSeq:** [NM\\_030562.1](#), [NP\\_085039.1](#)

**RefSeq Size:** 1683 bp

**RefSeq ORF:** 1479 bp

**Locus ID:** 80749

**UniProt ID:** [Q2WF71](#)

**Cytogenetics:** 7 A3

**Gene Summary:** Promotes neurite outgrowth in hippocampal neurons. Involved in the regulation and maintenance of excitatory synapses. Induces the clustering of excitatory postsynaptic proteins, including DLG4, DLGAP1, GRIA1 and GRIN1.[UniProtKB/Swiss-Prot Function]