

Product datasheet for **MG207872**

Mef2a (BC096598) Mouse Tagged ORF Clone

Product data:

Product Type:	Expression Plasmids
Product Name:	Mef2a (BC096598) Mouse Tagged ORF Clone
Tag:	TurboGFP
Symbol:	Mef2a
Synonyms:	A430079H05Rik
Mammalian Cell Selection:	Neomycin
Vector:	pCMV6-AC-GFP (PS100010)
E. coli Selection:	Ampicillin (100 ug/mL)



[View online »](#)

ORF Nucleotide Sequence:

>MG207872 representing BC096598
 Red=Cloning site Blue=ORF Green=Tags(s)

TTTTGTAATACGACTCACTATAGGGCGGCCGGAATTCGTCGACTGGATCCGGTACCGAGGAGATCTGCC
 GCC**GCGATCGCC**

ATGGGGCGAAAGAAGATACAAATCACACGCATAATGGATGAGAGGAACCGACAGTTACTTTTACAAGC
 GAAAGTTTGGATTGATGAAGAAAGCCTATGAACTCAGTGTGCTCTGTGACTGTGAAATAGCACTCATCAT
 TTTCAACAGCTCTAATAAGCTGTTTCAGTACGCTAGCACTGACATGGACAAAGTCTTCTCAAATACACT
 GAGTATAACGAGCCTCATGAAAGCAGGACGAACTCGGATATCGTTGAGGCTCTGAACAAGAAGGAACACA
 GAGGGTGCAGACGCCAGACCCTGATACTTCATATGTGCTAACTCCACATACAGAAGAAAAATAAAAA
 AATTAATGAGGAATTTGATAATATGATGCGGAATCATAAAATCGCACCTGGCTTGCCACCTCAGAATTC
 TCAATGTCTGTACAGTCCCTGTGACCAGCCCTAATGCTTTGTCGTACACTAACCCAGGGAGTTCACCTCG
 TGTACCCTCTTTGGCAGCCAGCTCAACATTAGCAGATTCGAGCATGCTGTCTCCACCCCGCCAGCCAGCT
 ACATAGAAATGTGTCCCAGGAGCTCCGCAGAGACCACCAAGTACCGGCAGTGAAGTGGGATGTTGAGC
 ACTACAGACCTACGGTGCACAAATGGAGCTGAAATAGTCTGTGGGAAATGGATTTGTAAACTCAAGGG
 CCTCTCCAAATTTGATTGGAAATCTGGTGCAAAATAGTTAGGCAAAGTCATGCCTACAAAGTCTCCCC
 GCCACCAGGTGGTGGCAGTCTTGAATGAACAGTCGGAACCAGATCTACGAGTTGTCAATCCCCATCA
 AGCAAGGGCATGATGCCCCACTTAATGCCAAAGGATAAGCAGTTCTCAAGCCACTCAACCTCTTGCCA
 CGCCTGTAGTGTCTGTGACAACCTCCGAGCTTGCCTCCACAGGGACTAGTGTACTCAGCAATGCCGACAGC
 CTACAACACTGATTACTCACTGACCAGCGCTGACCTGTCTGCCCTGCAAGGCTTTACTTCCCCTGGAATG
 CTGTCTCTGGGGCAGGCTTCAGCCTGGCAGCACCCTAGGACAAGCAGCCCTCAGCTCTCTGGTGG
 CTGGAGGGCAGTTATCTCAGGGTTCAAATTTGTCCATTAAACACCAACCAGAACATCAACATTAAGTGG
 GCCAATTTACCTCCCCGTGATAGAATGACCCCATCAGGCTTCCAACAGCAGCAGCAGCCACAACAG
 CAGCCACCCGCCACAACCTCCACAGCCCAACCCCGGCAGGAAATGGGGCGCTCCCCTGTGGACAGTCTGA
 GCAGCTCCAGCAGCTCCTATGATGGCAGTACCAGGGAGGATCCACGGGGTACTTCCATTCTCAAATTGT
 GCTTGGCCGACCTCCAAATACTGAGGACAGAGAAAGCCCTTCTGTAAAACGCATGAGGATGGACACATGG
 GTGACC

ACGCGTACGCGGCCGCTCGAG - GFP Tag - GTTTAA

Protein Sequence:

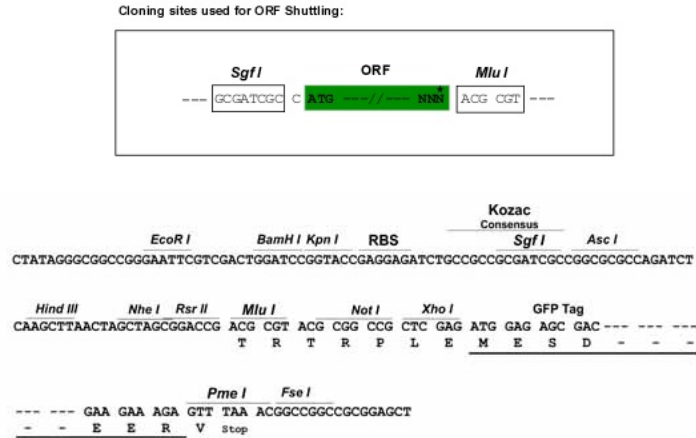
>MG207872 representing BC096598
 Red=Cloning site Green=Tags(s)

MGRKKIQITRIMDERNRQVFTTKRKFGLMKKAYELSVLCDCEIALIIFNSSNKLQYASTDMDKVLLKYT
 EYNPHESTRNSDIVEALNKKEHRGCDSPDPDTSYVLTPHTEEKYKKINEEFDNMMRNHKAIPGLPPQNF
 SMSVTPVTPSPNALSYTNPGSSLVSPSLAASSTLADSSMLSPPPATLHRNVSPGAPQRPSTGSASGMLS
 TTDLTVPNGAGNSPVGNFVNSRASPNLIGNTGANS LGVMPTKSPPPP GGSLGMNSRKPDLRVVIPP
 SKGMMPLNAQRISSSQATQPLATPVVSVTTPSLPPQGLVYSAMPYNTDYSLSADLSALQGFTSPGM
 LSLGQASAWQHHLGQAALSSLVAGGQLSQGSNLSINTNQINIKSEI SPPRDRMTPSGFQQQQQPQQ
 QPPPQPQPQPRQEMGRSPVDSLSSSSSYDGSREDPRGDFHSPIVLGRPPNTE DRESVVKRMRMDTW
 VT

TRTRPLE - GFP Tag - V

Restriction Sites:

Sgfl-MluI

Cloning Scheme:


ACCN: BC096598

ORF Size: 1478 bp

OTI Disclaimer: Due to the inherent nature of this plasmid, standard methods to replicate additional amounts of DNA in E. coli are highly likely to result in mutations and/or rearrangements. Therefore, OriGene does not guarantee the capability to replicate this plasmid DNA. Additional amounts of DNA can be purchased from OriGene with batch-specific, full-sequence verification at a reduced cost. Please contact our customer care team at custsupport@origene.com or by calling 301.340.3188 option 3 for pricing and delivery.

The molecular sequence of this clone aligns with the gene accession number as a point of reference only. However, individual transcript sequences of the same gene can differ through naturally occurring variations (e.g. polymorphisms), each with its own valid existence. This clone is substantially in agreement with the reference, but a complete review of all prevailing variants is recommended prior to use. [More info](#)

OTI Annotation: This clone was engineered to express the complete ORF with an expression tag. Expression varies depending on the nature of the gene.

Components: The ORF clone is ion-exchange column purified and shipped in a 2D barcoded Matrix tube containing 10ug of transfection-ready, dried plasmid DNA (reconstitute with 100 ul of water).

Reconstitution Method:

1. Centrifuge at 5,000xg for 5min.
2. Carefully open the tube and add 100ul of sterile water to dissolve the DNA.
3. Close the tube and incubate for 10 minutes at room temperature.
4. Briefly vortex the tube and then do a quick spin (less than 5000xg) to concentrate the liquid at the bottom.
5. Store the suspended plasmid at -20°C. The DNA is stable for at least one year from date of shipping when stored at -20°C.

RefSeq: [BC096598](#), [AAH96598](#)

RefSeq Size: 2469 bp

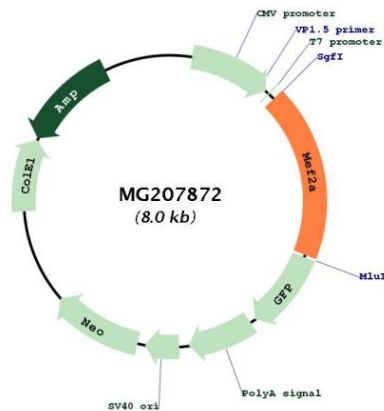
RefSeq ORF: 1478 bp

Locus ID: 17258

Cytogenetics: 7 36.72 cM

Gene Summary: Transcriptional activator which binds specifically to the MEF2 element, 5'-YTA[AT](4)TAR-3', found in numerous muscle-specific genes. Also involved in the activation of numerous growth factor- and stress-induced genes. Mediates cellular functions not only in skeletal and cardiac muscle development, but also in neuronal differentiation and survival. Plays diverse roles in the control of cell growth, survival and apoptosis via p38 MAPK signaling in muscle-specific and/or growth factor-related transcription. In cerebellar granule neurons, phosphorylated and sumoylated MEF2A represses transcription of NUR77 promoting synaptic differentiation. Associates with chromatin to the ZNF16 promoter (By similarity).[UniProtKB/Swiss-Prot Function]

Product images:



Circular map for MG207872