

Product datasheet for **MG207866**

Prcp (BC055022) Mouse Tagged ORF Clone

Product data:

Product Type:	Expression Plasmids
Product Name:	Prcp (BC055022) Mouse Tagged ORF Clone
Tag:	TurboGFP
Symbol:	Prcp
Synonyms:	PCP, HUMPCP
Mammalian Cell Selection:	Neomycin
Vector:	pCMV6-AC-GFP (PS100010)
E. coli Selection:	Ampicillin (100 ug/mL)



[View online »](#)

ORF Nucleotide Sequence:

>MG207866 representing BC055022
 Red=Cloning site Blue=ORF Green=Tags(s)

TTTTGTAATACGACTCACTATAGGGCGGCCGGGAATTCGTCGACTGGATCCGGTACCGAGGAGATCTGCC
 GCC**GCGATCGCC**

ATGGGCTGCCGGCTCTCCTGCTCTTCTTCTATTACTCGGGGCCGCCACAACCATCCGCCTAGGC
 TAAAGACCCTCGGCAGCCCGCATTGTGTCAGCCAGTCCCACACCCGACCCTGCTGTAGCCGTAAATACTC
 AGTTCTTTACTTCGAACAGAAGTTGACCACTTTGGGTTTGTGACATGAGAACCTTTAAACAGCGGTAC
 CTAGTCGCTGATAAACTGGCAGAGAAATGGTGGATCAATACTTTCTACACTGGTAACGAAGGGGATA
 TTGCTGGTTTTGCAATAATACGGGTTTCATGTGGGATGTGGCTGAGGAGCTGAAAGCTATGCTGGTGT
 CGCTGAGCATCGATACTATGGGGAGTCCCTTCCCTTTGGTCAGGACTCCTTCAAGGATCCCAACTTGT
 AATTTCTGACATCAGAACAGGCTCTGGCTGATTTGCAGAGTTAATCAGACACTGGAAAAACAATCC
 CAGGAGCTCAAGGTCAACTGTCATCGCCATCGGGGGCTTTATGGTGGCATGCTTGAGCCTGGTTCAG
 GATGAAATATCCTCACATTGTAGTTGGAGCTCTGCAGCTTCTGCCCTATCTGGCAGCTTGATGGTATG
 GTCCCTGTGGTGAAGTTATGAAGATTGTAACAACTTTCAGGAAAAGTGGTCCCTATTGTTCCAGAAA
 GTATCCGCAAATCCTGGAATGTCATTGACAAACTCTCAGGTTCCAGGCAGTGGTCTCCAGTCGCTCAGAA
 CATTCTTACCTATGTAGTCCCTTGACTTCTGAGAAAAATCCCAACTTTAAAAGGATGGATAGCTGAGACC
 TGGGTGAACCTGGCCATGGTGAACCTTACGCATGCAACTTTTTGCAGCCTTTGCTGCTTGGCCCA
 TCAAGGAGGTGTGCCAATATTTGAAAAATCCTAATGTATCGGATACAGTGTGCTGCAGAATATTTTCCA
 AGCTCTGAGTGTATTTAACTATTGAGGCAAGCAGCATGCCTGAATATTTCAAAACGACTACGAGC
 AGTCTGGGCTCCATGGGCTGGAGCTTTCAGGCCGTCACAGAAATGGTATGCCCTTTTGTACTAATGGTA
 TTGATGACATGTTTGAACCTTTCTGTGGGACTGGAGAAGTATCCAATGACTGTTTTAACCCAGGGG
 AGTGAAACCACGGCCTCATTGGATGACTACCATGTACGGTGGCAAAAACATCAGTTCCACTCAAACATC
 ATTTTCAGCAATGGTAAGTTAGACCCGTTGGTCCAGGAGCGGAGTAACGAGAGACATCACAGACACCTGG
 TGGCTATCAACATCCCTGACGGGCCCATATTTAGATCTCCGAGCCACAATGCCTTCGATCCTTCCTC
 TGTGCTGTATCTCGATTACTGGAAGTTAAACACATGAAGAAGTGGATTTAGATTTCTATAGCAATATC
 CAA

ACGCGTACGCGGCCGCTCGAG – GFP Tag – GTTTAA

Protein Sequence:

>MG207866 representing BC055022
 Red=Cloning site Green=Tags(s)

MGCRALLLSFLLLGAATTIPRLKTLGSPHLSASPTPDPVARKYSVLVFEQKVDHFGFADMRTFKQRY
 LVADKHWRNGSILFYTGNEGDIWFCNNTGFMWDVAEELKAMLVFAEHRYYGESLPGQDSFKDSQHL
 NFLTSEQALADFAELIRHLEKTIPGAQQPVIAIGGSYGGMLAAWFRMKYPHIVGALAASAPIWQLDGM
 VPCGEFMKIVTNDFRKSGPYCSESIRKSWNVIDKLSGSGSGLQSLTNILHLCSPLTSEKIPTLKGWIAET
 WYNLAMVNYPYACNQLPLPAWPIKEVCQYLKPNVSDTVLLQNIQALSVYYNYSQAACLNISQTTTS
 SLGSMGWSFQACTEMVMPFCTNGIDDMFEPFLWDLEKYSNDCFNQGVKPRPHWMTTMYGKNISSHSNI
 IFSNGKLDPWSSGGVTRDITDTLVAINIPDGAHLLDLRAHNAFDPSSVLLSRLLEVKHMKKWILDFYSNI
 Q

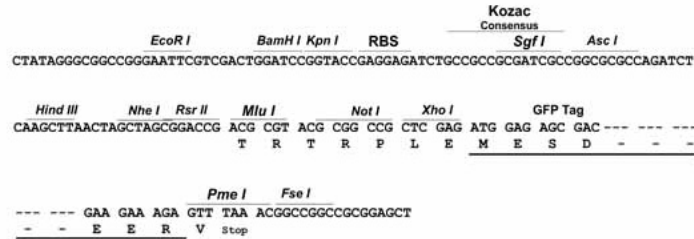
TRTRPLE – GFP Tag – V

Restriction Sites:

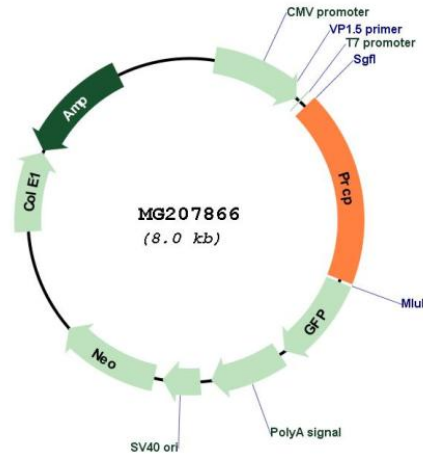
Sgfl-MluI

Cloning Scheme:

Cloning sites used for ORF Shutting:



Plasmid Map:



ACCN: BC055022

ORF Size: 1475 bp

OTI Disclaimer: The molecular sequence of this clone aligns with the gene accession number as a point of reference only. However, individual transcript sequences of the same gene can differ through naturally occurring variations (e.g. polymorphisms), each with its own valid existence. This clone is substantially in agreement with the reference, but a complete review of all prevailing variants is recommended prior to use. [More info](#)

OTI Annotation: This clone was engineered to express the complete ORF with an expression tag. Expression varies depending on the nature of the gene.

Components: The ORF clone is ion-exchange column purified and shipped in a 2D barcoded Matrix tube containing 10ug of transfection-ready, dried plasmid DNA (reconstitute with 100 ul of water).

Reconstitution Method:

1. Centrifuge at 5,000xg for 5min.
2. Carefully open the tube and add 100ul of sterile water to dissolve the DNA.
3. Close the tube and incubate for 10 minutes at room temperature.
4. Briefly vortex the tube and then do a quick spin (less than 5000xg) to concentrate the liquid at the bottom.
5. Store the suspended plasmid at -20°C. The DNA is stable for at least one year from date of shipping when stored at -20°C.

RefSeq: [BC055022](#), [AAH55022](#)

RefSeq Size: 2339 bp

RefSeq ORF: 1475 bp

Locus ID: 72461

Cytogenetics: 7 E1

Gene Summary: Cleaves C-terminal amino acids linked to proline in peptides such as angiotensin II, III and des-Arg9-bradykinin. This cleavage occurs at acidic pH, but enzymatic activity is retained with some substrates at neutral pH (By similarity).[UniProtKB/Swiss-Prot Function]