

Product datasheet for **MG207846**

Susd4 (NM_144796) Mouse Tagged ORF Clone

Product data:

Product Type:	Expression Plasmids
Product Name:	Susd4 (NM_144796) Mouse Tagged ORF Clone
Tag:	TurboGFP
Symbol:	Susd4
Synonyms:	A1848994; E430021N18Rik; N28096
Mammalian Cell Selection:	Neomycin
Vector:	pCMV6-AC-GFP (PS100010)
E. coli Selection:	Ampicillin (100 ug/mL)



[View online »](#)

ORF Nucleotide Sequence:

>MG207846 representing NM_144796
 Red=Cloning site Blue=ORF Green=Tags(s)

TTTTGTAATACGACTCACTATAGGGCGGCCGGAATTCGTCGACTGGATCCGGTACCGAGGAGATCTGCC
 GCC**CGGATCGCC**

ATGTATCATGGAATGAACCCGAGCAATGGAGATGGATTTCTAGAGCAGCAGCTGCAGCAACAGCAGCCTC
 AGTCCCCCAGAGACTCTTGGCCGTGATCCTGTGGTTTCAACTGGCGCTGTGCTTTGGCCCTGCACAGCT
 CACGGGTGGGTTTCGATGACCTCAACGTGTGTGCTGACCCAGGCGTCCCAGAGAATGGCTTCAAGACCCCC
 AGCGGAGGAGTTTTCTTCGAAAGCTCAGTAACCCGATTTCACTGCCAAGACGGATTCAAGGCTGAAGGGCT
 CTACAAAGAGGCTGTGTATGAAACATTTAATGGGACCCTAGGCTGGGTCCCAAGTGACAAACCTGTCTG
 CATACAAGAAGACTGCCGCATCCCCAAATTGAAGATGCTGAGATTGAAACAAGACGTACAGACACGGA
 GAGAAGTAGTCATTGACTGTCACGAGGGGTTCAAGATCCGCTACCCTGACCTGTACAACCTGGTTTCGT
 TATGCCGTGACGATGGGACATGGGATAACCTGCCCATCTGTCAAGGCTGCCTGAGACCTTAGCCTCTTC
 CAATGGCTACGTGAACATCTCCGAGTTCAGACCTCCTTCCCTGTGGAACTGTGATCGCCTATCGCTGC
 TTCCCTGGATTTAAACTCGAGGGTTCGAGAACCTCGAGTGCTTACACAACCTTATCTGGTCGTCACGCC
 CACCCCGTGCCTTGCTCTGGAAGTTTGTCCACTACCTCCTATGGTAAGTACGGAGATTTTCATCTGCCA
 CCCGAGGCCTTGTGAGCGCTACAACCATGGAAGTGTGGTGGAGTTCTACTGTGATCCTGGCTACAGCCTC
 ACCAGTGACTACAAGTACATCACCTGCCAGTATGGAGAGTGGTTTCTTCTACCAAGTCTACTGCATCA
 AATCAGAACAAACGTGGCCACGACCCACGAGACCCTCCTGACCAGTGGAAAGATCGTGGCGTTCACAGC
 CACCAGCGTGTGCTGGTGTACTGCTCGTCATCCTGGCCAGAATGTTCCAGACCAAGTTCAAGGCCAC
 TTCCCCCGAGGGTCTCCAGGAGTTCAGCAGTACCCCGACTTTGTGGTGTGGATGGAGTCCCGCCTC
 TCATGCTCCCACCTATGATGAGGCTGTGAACGCTAGCTCGAGTGCCTTAGGCCCGGGTACCCGGCCTC
 CGTGGGCCAGGGCTGTCCTTTACCTGTGGATGACCAGAGCCCTCCAGCATACCCCGGCTCCGGGGACAG
 GACACAGGCCCTGGGAGTCAGAAACCTGTGACAGTACTTCGGGTTCTCGGAGATGCTCCAGAGTCTAT
 ATTCACCCCCATGTGCCAAGGGGGCAGCCGCCCTGCCCGGACACCCCTGACACGATTTCAAGCACAGC
 AGGGGAGTGGCATCCACAAGCCCGGCATCGACATTGCAGATGAGATCCCGCTCATGGAAGAGGACCCA

ACGCGTACGCGGCCGCTCGAG - GFP Tag - GTTTAA

Protein Sequence:

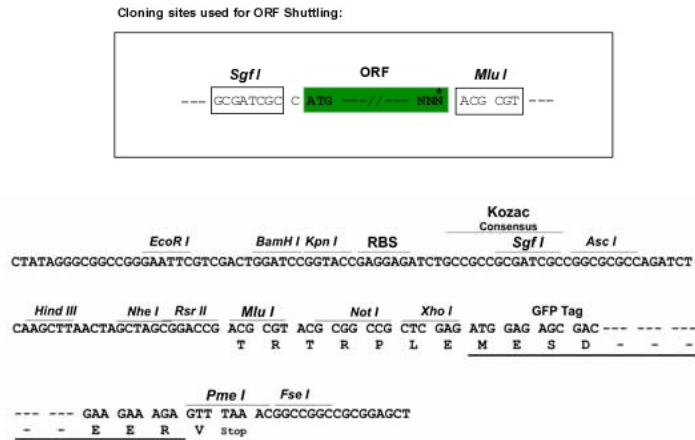
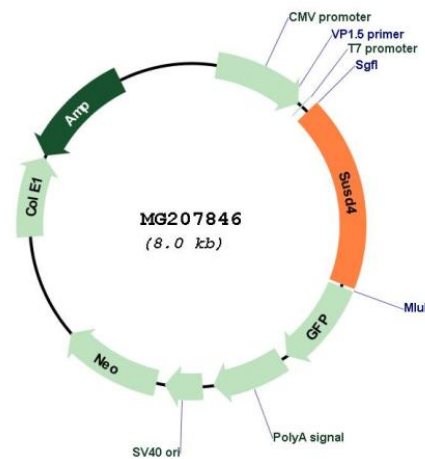
>MG207846 representing NM_144796
 Red=Cloning site Green=Tags(s)

MYHGMNPSNGDGFLEQQLQQQPQSPQRLLAVILWFQLALCFGPAQLTGGFDDLNVCADPGVPENGFRT
 SGGVFFESSVTRFHCQDGFRLKSTKRLCMKHFNGTLGWVPSDKPVCIQEDCRIPQIEDAEIRNKTYRHG
 EKLVIDCHEGFKIRYPDLVNLVSLCRDDGTWDLNLPICQGLRPLASSNGYVNISEFQTSFPGTVIAYRC
 FPGFKLEGSNLECLHNLWSSPPRCLALEVCLPPMVSHGDFICHPRPCERYNHGTVVEFYCDPGYSL
 TSDYKYITCQYGEWFPYQVYCIKSEQTWPSTHETLLTTWKIVAFATATSVLLVLLLVILARMFQTKFAH
 FPPRGPPRSSSDPDFVVVDGVPVMLPTYDEAVNGSSSALGPGYPASVQGCLPVDDQSPAYPGSGDT
 DTGPGESETCDSTSGSSEMLQSLYSPPMCQGGSRPAPDTPDTISSTAGEVASTSPGIDIADIEIPLMEEDP

TRTRPLE - GFP Tag - V

Restriction Sites:

Sgfl-MluI

Cloning Scheme:

Plasmid Map:


ACCN: NM_144796

ORF Size: 1470 bp

OTI Disclaimer: The molecular sequence of this clone aligns with the gene accession number as a point of reference only. However, individual transcript sequences of the same gene can differ through naturally occurring variations (e.g. polymorphisms), each with its own valid existence. This clone is substantially in agreement with the reference, but a complete review of all prevailing variants is recommended prior to use. [More info](#)

OTI Annotation: This clone was engineered to express the complete ORF with an expression tag. Expression varies depending on the nature of the gene.

Components: The ORF clone is ion-exchange column purified and shipped in a 2D barcoded Matrix tube containing 10ug of transfection-ready, dried plasmid DNA (reconstitute with 100 ul of water).

Reconstitution Method:

1. Centrifuge at 5,000xg for 5min.
2. Carefully open the tube and add 100ul of sterile water to dissolve the DNA.
3. Close the tube and incubate for 10 minutes at room temperature.
4. Briefly vortex the tube and then do a quick spin (less than 5000xg) to concentrate the liquid at the bottom.
5. Store the suspended plasmid at -20°C. The DNA is stable for at least one year from date of shipping when stored at -20°C.

RefSeq: [NM_144796.5](#)

RefSeq Size: 2035 bp

RefSeq ORF: 1473 bp

Locus ID: 96935

UniProt ID: [Q8BH32](#)

Cytogenetics: 1 H5

Gene Summary: Acts as complement inhibitor by disrupting the formation of the classical C3 convertase. Isoform 3 inhibits the classical complement pathway, while membrane-bound isoform 1 inhibits deposition of C3b via both the classical and alternative complement pathways. [UniProtKB/Swiss-Prot Function]