

Product datasheet for **MG207782**

Ccdc67 (BC096547) Mouse Tagged ORF Clone

Product data:

Product Type:	Expression Plasmids
Product Name:	Ccdc67 (BC096547) Mouse Tagged ORF Clone
Tag:	TurboGFP
Symbol:	Ccdc67
Synonyms:	4933401K09Rik; Deup1
Mammalian Cell Selection:	Neomycin
Vector:	pCMV6-AC-GFP (PS100010)
E. coli Selection:	Ampicillin (100 ug/mL)



[View online »](#)

ORF Nucleotide Sequence:

>MG207782 representing BC096547
 Red=Cloning site Blue=ORF Green=Tags(s)

TTTTGTAATACGACTCACTATAGGGCGGCCGGAATTCGTCGACTGGATCCGGTACCGAGGAGATCTGCC
 GCC**GCGATCGCC**

ATGGAACAAATCGACATCATGGTAAGCAACAAGAAGCTAGACTGGAAAGGAAGATGCGGGCTTTAGAGA
 CACGGTTAGACCTTCGGATCAAGAGTTGGCCAACGCACAGACTTGCTTGACCAGAAAGCCAGGAGGT
 GGGTTGCTTCGCGAGAAGCTGGACAGCCTAGAGAAATGTAATCTAGTAATGACTCAGAATATGAGGGG
 CAGCTACAGACCTAAAAGCTCAATTTTCTAAGCTAACCGTAACCTCGAAAAGCTGAGATTACACCAAA
 TGAAGCAAACAAATTCACCGAAAGGAGTCTCCAGCAAAGAAGAACTGCCCTTTGAGCTGAGCAGTCT
 GAACCAGAACTAGAGGAGTTCGAGCAAAGTCGAGGGAGTGGGACAAGCAGGAGGTCTCTACCAGACC
 CACCTGGTGTCCCTGGATGCTCAGCAGAAGTTGCTCTCTGAAAAGTGCAGCCAGTTTCAGAAACAGGCAC
 AAAATTACAAACTCAGTAAACGGGAAAAAGCAGTGCAGAGGACAGCAGCTCTGAGATCCCTCGCT
 GGTGTGTGAGTCGGATCCTGGCTGTGAAGCCACTCAAAGAGATGAGTTTATTATCGAGAAGTTAAAGTCG
 GCCGTGAGTGAATCGCGCTGAGCAGGAACAAGTTACAAGATGAAAACCGAAGCTCTGCAGGAACTGA
 AGATGTACCAGAGGCAGTGCCAGGCCATGGAAGCAGGACTGTGAGAGGTGAAGAGTGAGTTACAGTCGCG
 AGACGATCTCTGAGGATTATAGAAATGGAAAGACTGCACTTGATAGAGAACTGCTGAGAATGGGTGAA
 GTGCAGACTGCTCAAGATAACAGGAAAAGAGTTGAGTCATCATATCCCTTCTCCTAAAGAAGCAGAAA
 GGAAAAGGAAGGAGTTGTTTCCAATGGTCTCAGATCAACCAATCATGAAAAGGAATTAAGCAAGGCTGT
 GGACTTAAGTAACAAGAAGCATTACAGTGCACATCAATTAACAAGCTTGAATATGAGAACGAAAGACTC
 CGAAGCGATCTCGCAAGCTCCATGGCAATGGAAAAGCAGCGTGGCCCAATCAGAGCAGCTATGGTGAAG
 CAGGGGCATACGTCTCCAGAGCAGTGAACGAGGAGACCAAGTGGAGACAGAATTAGCCAAGACTGCGA
 GCTGAACAGAGCCACACCCTTGTGCGCTTTGCCATTTAGACCAAAGAAATGGCAAGCCATTGGTT
 GGTGACAATGAAGTCTCGCTCTGTCTCCACCAGATATATCCTTCGGGGCTTCCCTAGCTGCACAGCACT
 TCCTGATGGAGGAAGAGAGGGCGGCCAAGGAGCTTGAAGACTGCTCAACACACACATCGATGAGCTGCA
 GAGACACACCGAGTTCACGCTTAACAAATACACCAAACTCAAGCAGAGTAGACACATA

ACGCGTACGCGGCCGCTCGAG – GFP Tag – GTTTAA

Protein Sequence:

>MG207782 representing BC096547
 Red=Cloning site Green=Tags(s)

MEQIDIMVSNKKLDWERKMLETRLDLRDQELANAQTCLDQKQEVGLLRQKLDLSLEKCNLVMTQNYEG
 QLQTLKAQFSKLTSNFEKLRHLQMKQNIHRKESSKEELPFELSSLNQKLEEFRAKSREWQKQEVLYQT
 HLVSLDAQQLLSEKCSQFQKQAQNYQTQLNGKKQCAEDSSSEIPRLVCESDPGCEATQRDEFIEKLS
 AVSEIALSRNKLQDENQKLLQELKMYQRQCQAMEAGLSEVKSELQSRDILLRIEMERLHLHRELLRMGE
 VQTAQDNRKRVESYSPKPEAERKRKELFPMVSDQPNHEKELSKAVDLNKKHSQCTSINKLEYENERL
 RSDLAKLHGNGKAAWPNSQSYGEAGAYVFSQLKTETSGDRISQDCELNRSPTPLSPLPFQTKEMASPLV
 GDNEVLALSPDIFSFRASLAAQHFLMEEERRAKELEKLLNTHIDELQRHTEFTLNKYTKLKQSRHI

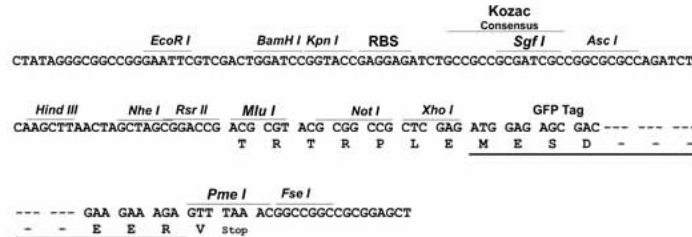
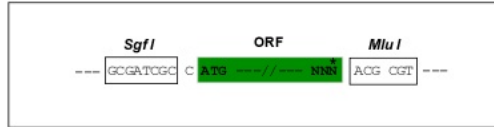
TRTRPLE – GFP Tag – V

Restriction Sites:

Sgfl-MluI

Cloning Scheme:

Cloning sites used for ORF Shutting:


ACCN: BC096547

ORF Size: 1460 bp

OTI Disclaimer: The molecular sequence of this clone aligns with the gene accession number as a point of reference only. However, individual transcript sequences of the same gene can differ through naturally occurring variations (e.g. polymorphisms), each with its own valid existence. This clone is substantially in agreement with the reference, but a complete review of all prevailing variants is recommended prior to use. [More info](#)

OTI Annotation: This clone was engineered to express the complete ORF with an expression tag. Expression varies depending on the nature of the gene.

Components: The ORF clone is ion-exchange column purified and shipped in a 2D barcoded Matrix tube containing 10ug of transfection-ready, dried plasmid DNA (reconstitute with 100 ul of water).

Reconstitution Method:

1. Centrifuge at 5,000xg for 5min.
2. Carefully open the tube and add 100ul of sterile water to dissolve the DNA.
3. Close the tube and incubate for 10 minutes at room temperature.
4. Briefly vortex the tube and then do a quick spin (less than 5000xg) to concentrate the liquid at the bottom.
5. Store the suspended plasmid at -20°C. The DNA is stable for at least one year from date of shipping when stored at -20°C.

RefSeq: [BC096547](#), [AAH96547](#)
RefSeq Size: 2942 bp

RefSeq ORF: 1460 bp

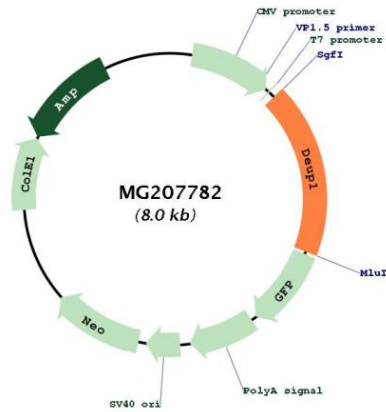
Locus ID: 234964

Cytogenetics: 9 A2

Gene Summary:

Key structural component of the deuterosome, a structure that promotes de novo centriole amplification in multiciliated cells. Deuterosome-mediated centriole amplification occurs in terminally differentiated multiciliated cells and can generate more than 100 centrioles. Probably sufficient for the specification and formation of the deuterosome inner core. Interacts with CEP152 and recruits PLK4 to activate centriole biogenesis.[UniProtKB/Swiss-Prot Function]

Product images:



Circular map for MG207782