

Product datasheet for **MG207780**

Cacnb4 (BC026479) Mouse Tagged ORF Clone

Product data:

Product Type:	Expression Plasmids
Product Name:	Cacnb4 (BC026479) Mouse Tagged ORF Clone
Tag:	TurboGFP
Symbol:	Cacnb4
Synonyms:	MGC31529, lethargic
Mammalian Cell Selection:	Neomycin
Vector:	pCMV6-AC-GFP (PS100010)
E. coli Selection:	Ampicillin (100 ug/mL)



[View online »](#)

ORF Nucleotide Sequence:

>MG207780 representing BC026479
 Red=Cloning site Blue=ORF Green=Tags(s)

TTTTGTAATACGACTCACTATAGGGCGGCCGGAATTCGTCGACTGGATCCGGTACCGAGGAGATCTGCC
 GCC**GCGATCGCC**

ATGTATGACAATTTGTACCTGCATGGAGTTGAAGACTCGGAGGCTGGGTACGAGATTCTATACAAGCA
 GGCCATCGGACTCCGATGTCTCCTTGAAGAGGACCGGGAAGCGATCCGCAAGAGCGAGAACAGCAAGC
 AGCTATCCAGCTTGAGAGAGCGAAGTCCAAACCTGTAGCTTTTGCGGTAAAAACGAACGTGAGCTACTGT
 GGTGCCCTGGACGAAGATGTGCCGTTCCAGCACAGCCATCTCCTTTGACGCCAAGGACTTTCTTCACA
 TTAAGAGAAATATAACAATGATTGGTGGATAGGAAGACTGGTAAAAGAGGGCTGTGAGATTGGCTTCAT
 CCCAAGTCCACTGCGCTTGAGAATATTCGATTCAACAGGAACAGAAAAGAGGCCGTTTTCATGGCGGG
 AAATCGAGTGGAACTCTCCTCCAGTCTGGGAGAAATGGTATCAGGAACATTCCGAGCAACTCCCACAA
 CAACAGCAAAACAGAAGCAGAAAGTGACGGAGCACATTCTCCGTATGACGTCGTGCCGTCATGCGTCC
 TGTGGTGTAGTGGGCCATCACTGAAAGTTATGAGGTAACAGACATGATGCAGAAAGCCCTCTTTGAT
 TTCCTGAAGCACAGGTTTGTATGGGAGGATCAATAACAAGAGTGACAGCTGACATTTCTCTTGCTAAGA
 GATCTGTCTCAACAATCCTAGCAAGAGAGCAATAATTGAACGTTCCAACACCAGATCCAGCTTAGCGGA
 AGTACAAAGTGAATGAAAGAATTTTGTAGTTGGCAAGATCTTGAATTGGTTGTTCTTGATGCAGAC
 ACCATCAACCACCAGCACAGCTGATAAAGACATCCTTAGCACCCATCATCGTCCACGTGAAGGTCTCGT
 CCCAAAGGTTTTACAGCGGCTGATTAAGTCCAGAGGAAAGTCCCAAAGCAAACACTTGAATGTTCAACT
 GGTGGCGGCCGATAAACTGGCCAGTGGCCGCTGAAATGTTTGTATATTAGATGAGAATCAACT
 GAGGATGCCTGTGAACATCTGGGAGAGTACCTGGAGGCATACTGGCGTGCCACCCACAGCAGTAGCA
 CCCCTATGACCCATTACTGGGGCGAAGCTGGGCTCCACAGCCCTCTCACCATATCCCACAGCAATCTC
 TGGATTACAGAGTCAGCGAATGAGACACAGCAACCATTCTACAGAGAATTCTCCAATTGAAAGACGAAGC
 CTAATGACCTCGGATGAAAATTACCACAATGAGAGGGCCCGCAAGAGTAGGAACCGCTTGTCTTCCAGCT
 CCCAGCACAGCCGAGACCACTACCCTCTGGTGAAGAAGATTACCCGGACTCGTACCAGGACACTTATAA
 GCCCATAGGAACCGAGGATCGCCCGGGGGTGCAGCCATGACTCCCGACATAGGCTT

ACGCGTACGCGGCCGCTCGAG - GFP Tag - GTTTAA

Protein Sequence:

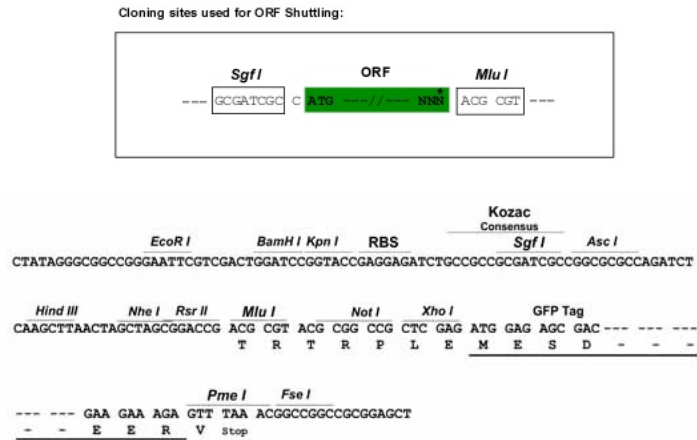
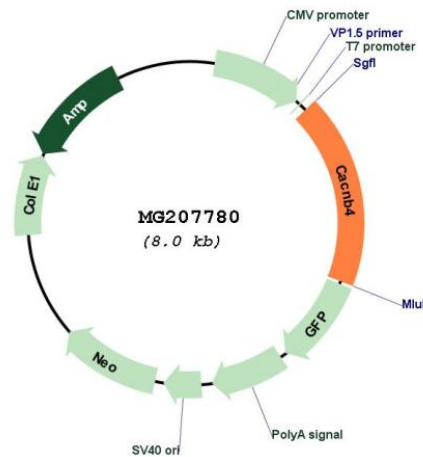
>MG207780 representing BC026479
 Red=Cloning site Green=Tags(s)

MYDNLYLHGVEDSEAGSADSYTSRPSDSVSDVLEEDREAIRQEREQAAIQLERAKSKPVAFVKTNVSYC
 GALDEDVVPVSTAISFDAKDFLHIKEKYNNDWWIGRLVKEGCEIGFIPSPRLLENIRIQEQKGRGFHGG
 KSSGNSSSSLGEMVSGTFRATPTTTAKQKQKQVTEHIPPYDVVPSMRPVVLVGPVSLKGYEVTMMQKALFD
 FLKHRFDGRISITRVTADISLAKRSVLNPNPKRAIERSNTRSSLAEVQSEIERIFELARSLQLVVLDDAD
 TINHPAQLIKTSLAPIIVHVKVSSPKVLQRLIKSRGKSQSKHLNVQLVAADKLAQCPPEMFDVILDENQL
 EDACEHLGEYLEAYWRATHSSSTPMTPLLGRNVGSTALSPYPTAISGLQSQMRHNSHNSTENSPIERRS
 LMTSDENYHNERARKSRNRLSSSSQHSRDHYPLVEEDYPDSYQDTYKPHRNRGSPGGCSHDSRHRL

TRTRPLE - GFP Tag - V

Restriction Sites:

Sgfl-MluI

Cloning Scheme:

Plasmid Map:


ACCN: BC026479

ORF Size: 1460 bp

OTI Disclaimer: The molecular sequence of this clone aligns with the gene accession number as a point of reference only. However, individual transcript sequences of the same gene can differ through naturally occurring variations (e.g. polymorphisms), each with its own valid existence. This clone is substantially in agreement with the reference, but a complete review of all prevailing variants is recommended prior to use. [More info](#)

OTI Annotation: This clone was engineered to express the complete ORF with an expression tag. Expression varies depending on the nature of the gene.

Components: The ORF clone is ion-exchange column purified and shipped in a 2D barcoded Matrix tube containing 10ug of transfection-ready, dried plasmid DNA (reconstitute with 100 ul of water).

Reconstitution Method:

1. Centrifuge at 5,000xg for 5min.
2. Carefully open the tube and add 100ul of sterile water to dissolve the DNA.
3. Close the tube and incubate for 10 minutes at room temperature.
4. Briefly vortex the tube and then do a quick spin (less than 5000xg) to concentrate the liquid at the bottom.
5. Store the suspended plasmid at -20°C. The DNA is stable for at least one year from date of shipping when stored at -20°C.

RefSeq: [BC026479](#), [AAH26479](#)

RefSeq Size: 2188 bp

RefSeq ORF: 1460 bp

Locus ID: 12298

Cytogenetics: 2 29.98 cM

Gene Summary: The beta subunit of voltage-dependent calcium channels contributes to the function of the calcium channel by increasing peak calcium current, shifting the voltage dependencies of activation and inactivation, modulating G protein inhibition and controlling the alpha-1 subunit membrane targeting.[UniProtKB/Swiss-Prot Function]