

## Product datasheet for **MG207772**

### Zfp639 (NM\_144519) Mouse Tagged ORF Clone

#### Product data:

Product Type:	Expression Plasmids
Product Name:	Zfp639 (NM_144519) Mouse Tagged ORF Clone
Tag:	TurboGFP
Symbol:	Zfp639
Synonyms:	6230400O18Rik; ANC-2H01; ZASC1; Znf639
Mammalian Cell Selection:	Neomycin
Vector:	pCMV6-AC-GFP (PS100010)
E. coli Selection:	Ampicillin (100 ug/mL)



[View online »](#)

**ORF Nucleotide Sequence:**

>MG207772 representing NM\_144519  
 Red=Cloning site Blue=ORF Green=Tags(s)

TTTTGTAATACGACTCACTATAGGGCGGCCGGAATTCGTCGACTGGATCCGGTACCGAGGAGATCTGCC  
 GCC**CGGATCGCC**

ATGAATGAATATCCTAAAAAAGAAAAAGGAAGACTTTACACCCTTCTCGCTATTAGATCTTTCTGGAA  
 TAAGCAGAATTGCAGATGGAGTCAGTGGGATTTTTCTGATCACTGTTACAGTGTCTGCTCTATGAGACA  
 GCCAGACTTAAAAATTTTGACAACAAAGATGATGATTCTGATCCTGAGACAGCAAAATGACTTGCCAAA  
 TTTGCAGATGGAACCAAGGCCAGAAACAGGAATCAGAGCTACCTGGTTCCAGCCCTGTGCTTAGGATTC  
 TAGACCACACTGTCTTTCCACAGAAAAATCTACTGAAGTTGAGATCTGTGATGAAGAATGTGCCTCACC  
 TGAGTCAGTGCATCAGCATACTCAAGAGGAGAGCCCTATAGAAGTTCATACCTCAGAAGACGTCCCAATT  
 GCTGTAGAAGTTCATGCAATCTCTGAAGACTATGATATAGAGGCAGAGAACAATTCCTCTGAGAGCCTCC  
 AAGACCAGGCCGATGAAGAACCACCAGCTAAACTCTGAAAATCTTGACAAGGGCCAGGCTTTGAATGT  
 GACTGCCAACAGAAGTGGCCTCTCTGAGAGCCAACAGCAGTGGTCTCTACAAGTGTGAACCTTTGTGAA  
 TTTAACAGTAAATACTTTCTGACCTAAAGCAACATGTGATCCTGAAACACAAGCCACTGACTCGAATG  
 TGTGTCGGGTGTGTAAGGAAAGCTTCTCTACCAACATGCTTCTCATTGAACACGCCAAAATCCATGAAGA  
 AGACCCCTACATCTGTAAGTACTGTGATTACAAGACTGTGATCTTTGAGAACCTCAGCCAGCACATTGCA  
 GACACGCACTTCAGCGACCACCTTTACTGGTGTGAGCAGTGTGACGTGCAGTTCTCTCAAGCAGTGAGC  
 TCTACCTGCACTTCAGGAGCATAGCCGTGATGAGCAGTACCTGTGCCAGTTCTGTGAGCAGCAGACAGG  
 GGACCTGAGGACTTGCACAGCCACGTTGTCAACGAGCAGCTCGCAGACTGATTGAGCTGAGTGACAAG  
 TGTGGCAGTGGTGGCCATGGGCAGTGCACCTTTAAGCAAGATCACCTTTGACAAATGTAAAAATTTCT  
 TCGTGTGTCGAAGTATGTGGCTTTCGGAGCAGACTCACACAAATGTCAACAGACACGTGGCTATCGAGCA  
 TACTAAAAATATCCCTCATGTTTGTGATGACTGTGGGAAGGGCTTTCCAGCATGTTGGAATATTGCAAG  
 CATCTAAATTCACATCTATCTGAAGGGATTTACTTATGCCAATATTGTGAATATTCAACAGGACAAATTG  
 ACGATCTTAAATTCATCTAGATTTCAAGCATTAGCTGACTTGCCTCATAAATGTAGTGAGTGCTTGAT  
 GAGGTTTGGGAACGAAAGGGACTTACTCGGTCACCTTCAAGTCCATGAGACTACC

**ACGCGTACGCGGCCGCTCGAG** - GFP Tag - GTTTAA

**Protein Sequence:**

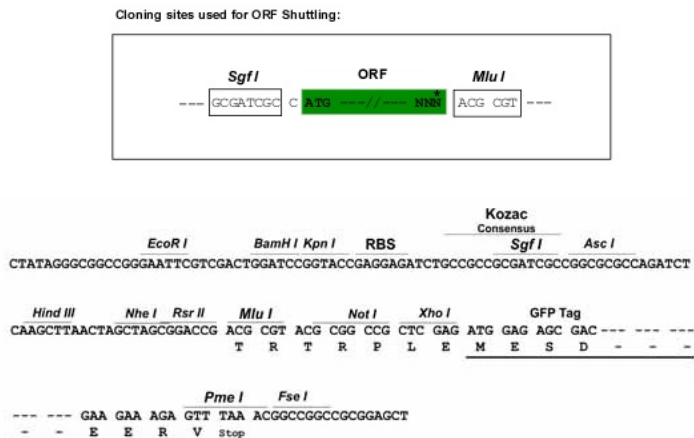
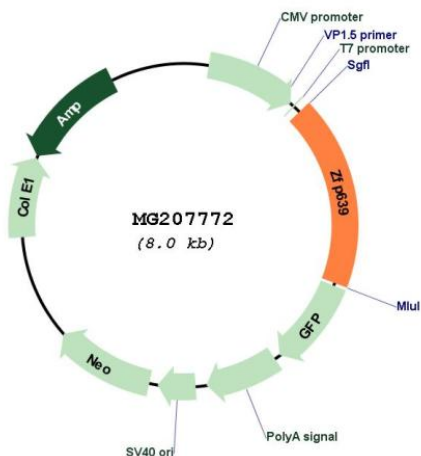
>MG207772 representing NM\_144519  
 Red=Cloning site Green=Tags(s)

MNEYPKRKRKTLHPSRYSDSSGISRIADGVSGIFSDHCYSVCSMRQPDLYFDNKDDSDPETANDLPK  
 FADGTKARNRNQSYLVPSPVLRILDHTVFSTEKSTEVEICDEECASPESVHQHTQEESEPIEVHTSEDVPI  
 AVEVHAISEDYDIEAENNSSESLQDQADEEPPAKLCKILDKGQALNVTAQQKWPLLANSGLYKCELC  
 FNSKYFSDLKQHVILKHKRTDSNVCRVCKESFSTNMLLIEHAKLHEEDPYICKYCDYKTVIFENLSQHIA  
 DTHFSDHLYWCEQCDVQFSSSELYLHFQEHSRDEQYLQCFCEHETGDPEDLHSHVVNEHARRLIELSDK  
 CGSGGHGQCSLLSKITFDKCKNFFVCQVCFRSRLHTNVNRHVAIEHTKIFPHVCDDCGKGFSSMLEYCK  
 HLNSHLEGIYLCQYCEYSTGQIDDLKIHLDFKHSADLPHKCSECLMRFGNERDLLGHLQVHETT

**TRTRPLE** - GFP Tag - V

**Restriction Sites:**

SgfI-MluI

**Cloning Scheme:**

**Plasmid Map:**


**ACCN:** NM\_144519

**ORF Size:** 1455 bp

**OTI Disclaimer:** The molecular sequence of this clone aligns with the gene accession number as a point of reference only. However, individual transcript sequences of the same gene can differ through naturally occurring variations (e.g. polymorphisms), each with its own valid existence. This clone is substantially in agreement with the reference, but a complete review of all prevailing variants is recommended prior to use. [More info](#)

**OTI Annotation:** This clone was engineered to express the complete ORF with an expression tag. Expression varies depending on the nature of the gene.

**Components:** The ORF clone is ion-exchange column purified and shipped in a 2D barcoded Matrix tube containing 10ug of transfection-ready, dried plasmid DNA (reconstitute with 100 ul of water).

**Reconstitution Method:**

1. Centrifuge at 5,000xg for 5min.
2. Carefully open the tube and add 100ul of sterile water to dissolve the DNA.
3. Close the tube and incubate for 10 minutes at room temperature.
4. Briefly vortex the tube and then do a quick spin (less than 5000xg) to concentrate the liquid at the bottom.
5. Store the suspended plasmid at -20°C. The DNA is stable for at least one year from date of shipping when stored at -20°C.

**RefSeq:** [NM\\_144519.4](#), [NP\\_653102.1](#)

**RefSeq Size:** 1925 bp

**RefSeq ORF:** 1458 bp

**Locus ID:** 67778

**UniProt ID:** [Q99KZ6](#)

**Cytogenetics:** 3 A3

**Gene Summary:** Binds DNA and may function as a transcriptional repressor.[UniProtKB/Swiss-Prot Function]