

Product datasheet for **MG207752**

Osbp12 (NM_144500) Mouse Tagged ORF Clone

Product data:

Product Type:	Expression Plasmids
Product Name:	Osbp12 (NM_144500) Mouse Tagged ORF Clone
Tag:	TurboGFP
Symbol:	Osbp12
Synonyms:	C130070J12Rik; mKIAA0772; ORP-2; Orp2
Mammalian Cell Selection:	Neomycin
Vector:	pCMV6-AC-GFP (PS100010)
E. coli Selection:	Ampicillin (100 ug/mL)



[View online »](#)

ORF Nucleotide Sequence:

>MG207752 representing NM_144500
 Red=Cloning site Blue=ORF Green=Tags(s)

TTTTGTAATACGACTCACTATAGGGCGGCCGGAATTCGTCGACTGGATCCGGTACCGAGGAGATCTGCC
 GCC**CGCATCGCC**

ATGAACGGGGAGGAAGAATTCTTTGATGCCGTTACAGGCTTTGATTCTGATAATTCTTCTACAGGGGAAT
 TTTTCAGAGGCAAATAAAATTAGTGGGATGATTGACTTGGATACCGAGCAAAGTACTAGGAGTGGGAAAAA
 TGGGGAGAAACCAACAAGAGAATGGAATTCAAAAGCACAGGACAGCCCTTCTGCTCCCATGTTCAACC
 AGAAGCGACTTCAGTGTGTGGAGTATCCTGAAGAAATGCATTGGCTTGGAACTCTCCAAGATCACAATGC
 CAATTGCCTTCAATGAGCCACTGAGCTTCTGCAGCGGATCACAGAGTACATGGAGCATGTGTACCTCAT
 TCACAAAGCCTCAAGTCAGTCCCAGCCGCTGGAGAGAATGCAGTCTGTGCTGCCTTTGCCGTCTCAGCT
 GTGGCTTCCCAGTGGGAGAGAACTGGCAAACCTTTAACCCTCTTGGGAGAGACATATGAGTTGATCA
 GGAAGACTTAGGTTTCAATTTATATCTGAGCAGGTGAGTACCACCCTCTATTAGCGCATTTTATTC
 AGAAGGTCTCAATCAAGACTTCAGTTCACGGTTCATCTACCCAAAGCTGAAGTTCTGGGCAAGAGT
 GTGGAGCGGAGCCCCGGGGACCATCACACTGGAGCTGCTCAAACATAATGAAGCCTATACCTGGACCA
 ACCCTACCTGCTGTGTACACAATGTCATCCTTGGGCAGCTATGGATAGAGCAGTATGGGATAGTGGAGAT
 TGTAATCACAGAAGTGGAGATAAGTGTATACTTCACTTCAAGCCTTGTGGATTGTTGGGAAGGAACTT
 CACAGAGTAGAAGGTACATTCAAGACAAAAACAGGAAGAAGCTCTTTATCATGTATGGCAAGTGGACAG
 AGTGCTTGTGGGAATAGATCCTGCTTCATACGAGTCTTTAAGAAGCAAGAGAAGAGAGGTGACCAGGC
 CAGGAAGCCAAGATGGATGATGGCCCCGAGAAAGCTAACAGTGTATGCTGCTGGTGTATGTGGCAGACGAC
 GTTCTGTGGCTCAGGAGACGGTCAAGTATCCCCGGCAGCAAGCTGCTCTGGAGGATCAACAGCCGGC
 CCCCCAAGTCTGCTCAGATGTACAACCTTACCAGCTTCACTGTGAGTCTCAATGAGTTGGAGTCAGGAT
 GGAGAAGACTCTGCCACCACAGACTGCCGCTCCGCTCCTGACATACGAGGCATGGAGAACGGAAACATG
 GATCTGGCCAGCCAGGAGAAGGAGCGGCTAGAGAAAAGCAGAGAGAGGCCAGAAAAGAGCGTGCCTAAAG
 AGGACGCAGAGTGGCGGACCAGGTGTTCTCTCCAGGCAATAACCCTACACAGGAGCTCCTGACTGGCT
 GTACGCCGCCATTACTTTGAGCGTAACCTCTCAGACTGCCAGACATATAC

ACGCGTACGCGGCCGCTCGAG - GFP Tag - GTTTAA

Protein Sequence:

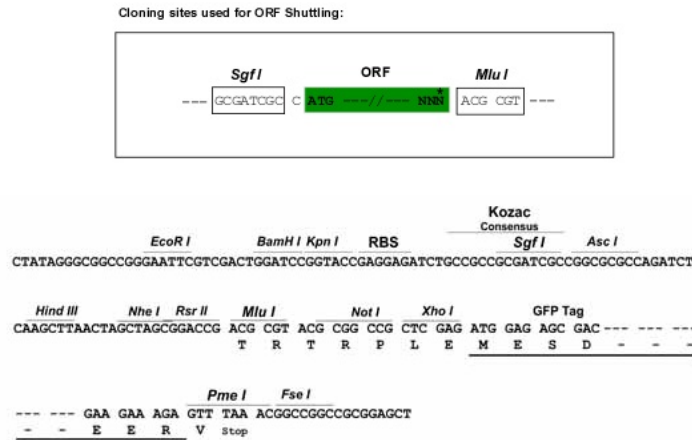
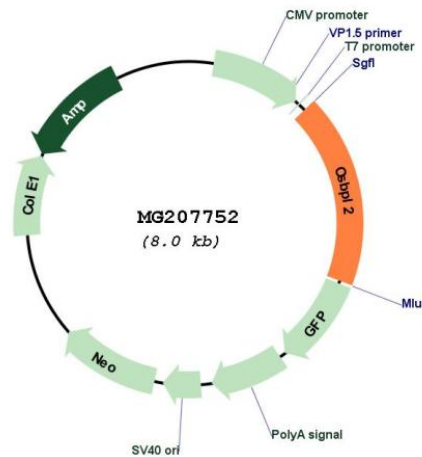
>MG207752 representing NM_144500
 Red=Cloning site Green=Tags(s)

MNGEEFFDAVTGFSDNSSTGEFSEANKISGMIDLDTSKSTRSGKNKEKPPQENGIQKHRTALPAPMFT
 RSDFSVWSILKKCIGLELSKITMPIAFNEPLSFLQRITEYMEHVLIHKASSQSQPLERMQSVAFAVSA
 VASQWERTGKPFNPLLGETYELIREDLGFRFISEQVSHHPPISAFYSEGLNQDFRFGHSIYPKLFKFWGKS
 VEAERGTITLELLKHNEAYTWNPTCCVHNVILGQLWIEQYGIIVEIVNHRTGDKCILHFKPCGLFGKEL
 HRVEGYIQDKNRKLFIMYGKTECLWGIDPASYESFKKQEKRGDQARKAKMDDGPEKANSQDVPDGDVADD
 VPVAQETVQVIPGSKLLWRINSRPPNSAQMYNFTSFTVSLNELESGMEKTLPTDCRLRPDIRGMENGM
 DLASQEKERLEEKQREARKERAKEDAERWRWFSPGNPYTGAPDWLYAGHYFERNFSDCPDIY

TRTRPLE - GFP Tag - V

Restriction Sites:

Sgfl-MluI

Cloning Scheme:

Plasmid Map:


ACCN: NM_144500

ORF Size: 1452 bp

OTI Disclaimer: The molecular sequence of this clone aligns with the gene accession number as a point of reference only. However, individual transcript sequences of the same gene can differ through naturally occurring variations (e.g. polymorphisms), each with its own valid existence. This clone is substantially in agreement with the reference, but a complete review of all prevailing variants is recommended prior to use. [More info](#)

OTI Annotation: This clone was engineered to express the complete ORF with an expression tag. Expression varies depending on the nature of the gene.

Components: The ORF clone is ion-exchange column purified and shipped in a 2D barcoded Matrix tube containing 10ug of transfection-ready, dried plasmid DNA (reconstitute with 100 ul of water).

Reconstitution Method:

1. Centrifuge at 5,000xg for 5min.
2. Carefully open the tube and add 100ul of sterile water to dissolve the DNA.
3. Close the tube and incubate for 10 minutes at room temperature.
4. Briefly vortex the tube and then do a quick spin (less than 5000xg) to concentrate the liquid at the bottom.
5. Store the suspended plasmid at -20°C. The DNA is stable for at least one year from date of shipping when stored at -20°C.

RefSeq: [NM_144500.1](#)

RefSeq Size: 2746 bp

RefSeq ORF: 1455 bp

Locus ID: 228983

UniProt ID: [Q8BX94](#)

Cytogenetics: 2 H4

Gene Summary: Intracellular transport protein that binds sterols and phospholipids and mediates lipid transport between intracellular compartments. Increases plasma membrane cholesterol levels and decreases phosphatidylinositol-4,5-bisphosphate levels in the cell membrane. Binds phosphoinositides, such as phosphatidylinositol-4,5-bisphosphate. Exhibits strong binding to phosphatidic acid and weak binding to phosphatidylinositol 3-phosphate. Binds cholesterol, dehydroergosterol, 22(R)-hydroxycholesterol and 25-hydroxycholesterol (in vitro). [UniProtKB/Swiss-Prot Function]