

Product datasheet for **MG207739**

Ddx6 (NM_007841) Mouse Tagged ORF Clone

Product data:

Product Type:	Expression Plasmids
Product Name:	Ddx6 (NM_007841) Mouse Tagged ORF Clone
Tag:	TurboGFP
Symbol:	Ddx6
Synonyms:	1110001P04Rik; E230023J21Rik; HLR2; mRCK/P54; p54; rck
Mammalian Cell Selection:	Neomycin
Vector:	pCMV6-AC-GFP (PS100010)
E. coli Selection:	Ampicillin (100 ug/mL)



[View online »](#)

ORF Nucleotide Sequence:

>MG207739 representing NM_007841
 Red=Cloning site Blue=ORF Green=Tags(s)

TTTTGTAATACGACTCACTATAGGGCGGCCGGGAATTCGTCGACTGGATCCGGTACCGAGGAGATCTGCC
 GCC**CGCATCGCC**

ATGAGCACGGCCAGAACAGAGAACCCTGTTATCATGGGTCTGTCCAGTCAGAACGGCCAGCTGAGGGGCC
 CTGTGAAGGCCAGTGCTGGCCCTGGAGGAGGGGCACACAGCCACAGCCAGCTGAACCAGTTGAAGAA
 CACCAGCACAATCAATAATGGCACTCCACAGCAAGCCAGAGCATGGCCGCCACTATTAACCTGGTGAT
 GACTGGAAAAAGACATTAATACTCCCTCCAAGGATCTAAGAATCAAACTTCGGATGTGACCTCCACAA
 AAGGAAATGAGTTTGAAGATTACTGTTTGAACGAGAGTTGCTAATGGGAATTTTGAATGGGCTGGGA
 AAAACCATCTCTATCCAGGAGGAGAGCATTCCCATTGCTTTATCTGGTAGGGATATCTTAGCTAGAGCA
 AAAAATGGAACAGGCAAAAGCGGTGCCTACCTCATCCCCTTACTTGAAAGGCTGGACCTGAAGAAGGACA
 ATATTCAAGCAATGGTGATTGTTCCCACTAGAGAACTTGCTCTACAGGTCAGTCAGATTTGCATCCAGGT
 CAGCAAAACATGGGAGGGGCCAAAGTGATGGCAACCACCGAGGAACCAATTTACGAGATGACATAATG
 AGGCTTGATGATACAGTGATGGTGATCGCTACCCCTGGCAGGATCCTGGATCTCATCAAGAAAGGCG
 TGGCAAAGGTTGACCATGTCCAGATGATAGTGCTAGATGAGGCAGATAAATTGTTGTCCACAGGATTTTGT
 GCAGATAATGGAGGATATTATTCTCACACTACCTAAAAATAGGCAGATTTTACTATATCCGCTACTTTC
 CCTCTTAGTGACAAAAGTTTATGAATCCCATCTGCAAAAACCTACGAGATAAACCTGATGGAGGAAC
 TAACTCTGAAAGGAGTAACTCAGTACTACGCATATGTAACGGAGCGCCAAAAAGTGCCTGCCTCAATAC
 ACTTTTCTCCAGGCTTCCAGATAAACAGTCCATCATTTTCTGCAACTCCTCCCAGAGAGTCGAGCTACTC
 GCCAAGAAGATTTCTCAGCTGGGCTACTTGTCTTTTATCCATGCTAAAATGAGGCAGGAACATCGAA
 ATCGTGTCTTTCATGATTTCCGAAATGGCTTATGCCGCAATCTGTTTGCAGTCTGTTTACCCGAGG
 TATTGATATACAAGCTGTGAATGTGTAATAAACTTTGACTTCCCAAGCTGGCAGAGACCTATCTTCAT
 CGTATTGGAAGATCAGGTCGCTTGGTTCATCTGGCTTAGCCATCAACTGATCACTTATGATGATCGCT
 TCAACCTGAAGAGTATTGAGGAGCAGCTGGGGACAGAGATCAAACCCATCCCAAGCAACATCGACAAGAG
 CCTGTATGTGGCAGAATACCACAGTGAGCCTGCAGAAGACGAGAAACCG

ACGCGTACGCGGCCGCTCGAG – GFP Tag – GTTTAA

Protein Sequence:

>MG207739 representing NM_007841
 Red=Cloning site Green=Tags(s)

MSTARTENPVIMGLSSQNGQLRGPVKASAGPGGGGTQPQPQLNQLKNTSTINNGTPQQAQSMAATIKPGD
 DWKKTLLKPPKDLRIKTSVDTSTKGNFEDYCLKRELLMGIFEMGWEKPSPIQEESIPIALSGRDILARA
 KNGTGKSGAYLIPLLERLDLKKDNIQAMVIVPTRELALQVSQICIQVSKHMGGAKVMATTGGTNLRDDIM
 RLDDTVHVVIATPGRILDLIKGVAKVDHVQMIVLDEADKLLSQDFVQIMEDIILTLPKNRQILLYSATF
 PLSVQKFMNSHLQKPYEINLMEELTLKGVTYYYAVYTERQKVHCLNTLFSRLQINQSIIFCNSSQRVELL
 AKKISQLGYSCFYIHAKMRQEHRNRVHDFRNGLCRNLVCTDLFTRGIDIQAVNVVINFDFPKLAETYLH
 RIGRSRFGHLGLAINLITYDDRFNLKSIIEQLGTEIKPIPSNIDKSLYVAEYHSEPAEDEPK

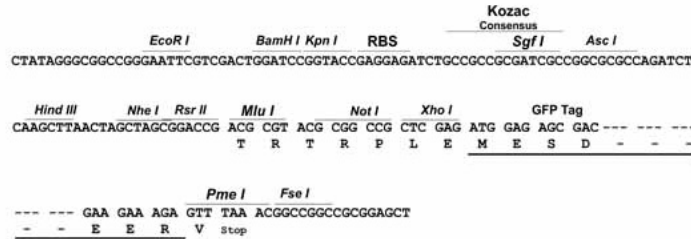
TRTRPLE – GFP Tag – V

Restriction Sites:

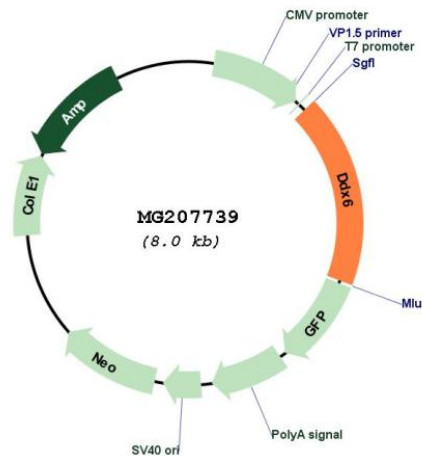
SgfI-MluI

Cloning Scheme:

Cloning sites used for ORF Shutting:



Plasmid Map:



ACCN: NM_007841
 ORF Size: 6005 bp

OTI Disclaimer: Due to the inherent nature of this plasmid, standard methods to replicate additional amounts of DNA in E. coli are highly likely to result in mutations and/or rearrangements. Therefore, OriGene does not guarantee the capability to replicate this plasmid DNA. Additional amounts of DNA can be purchased from OriGene with batch-specific, full-sequence verification at a reduced cost. Please contact our customer care team at custsupport@origene.com or by calling 301.340.3188 option 3 for pricing and delivery.

The molecular sequence of this clone aligns with the gene accession number as a point of reference only. However, individual transcript sequences of the same gene can differ through naturally occurring variations (e.g. polymorphisms), each with its own valid existence. This clone is substantially in agreement with the reference, but a complete review of all prevailing variants is recommended prior to use. [More info](#)

OTI Annotation: This clone was engineered to express the complete ORF with an expression tag. Expression varies depending on the nature of the gene.

Components: The ORF clone is ion-exchange column purified and shipped in a 2D barcoded Matrix tube containing 10ug of transfection-ready, dried plasmid DNA (reconstitute with 100 ul of water).

Reconstitution Method:

1. Centrifuge at 5,000xg for 5min.
2. Carefully open the tube and add 100ul of sterile water to dissolve the DNA.
3. Close the tube and incubate for 10 minutes at room temperature.
4. Briefly vortex the tube and then do a quick spin (less than 5000xg) to concentrate the liquid at the bottom.
5. Store the suspended plasmid at -20°C. The DNA is stable for at least one year from date of shipping when stored at -20°C.

RefSeq: [NM_007841.2](#)

RefSeq Size: 2335 bp

RefSeq ORF: 1452 bp

Locus ID: 13209

UniProt ID: [P54823](#)

Cytogenetics: 9 24.84 cM

Gene Summary: In the process of mRNA degradation, plays a role in mRNA decapping (By similarity). Blocks autophagy in nutrient-rich conditions by repressing the expression of ATG-related genes through degradation of their transcripts (PubMed:26098573).[UniProtKB/Swiss-Prot Function]