

## Product datasheet for **MG207733**

### **Fbxl6 (BC054377) Mouse Tagged ORF Clone**

#### **Product data:**

|                           |   |
|---------------------------|---|
| Product Type:             | Expression Plasmids                     |
| Product Name:             | Fbxl6 (BC054377) Mouse Tagged ORF Clone |
| Tag:                      | TurboGFP                                |
| Symbol:                   | Fbxl6                                   |
| Synonyms:                 | AU021795; Fbl6                          |
| Mammalian Cell Selection: | Neomycin                                |
| Vector:                   | pCMV6-AC-GFP (PS100010)                 |
| E. coli Selection:        | Ampicillin (100 ug/mL)                  |



[View online »](#)

**ORF Nucleotide Sequence:**

>MG207733 representing BC054377  
 Red=Cloning site Blue=ORF Green=Tags(s)

TTTTGTAATACGACTCACTATAGGGCGGCCGGAATTCGTCGACTGGATCCGGTACCGAGGAGATCTGCC  
 GCC**GCGATCGCC**

ATGGCTCCCGTGGCCTCTAGGCGAGTTAGACGTCGAGTTCGAAGCTCCAAGCGGCCCGATGCGCGGGGCC  
 GCTCGGGCGAGGACTGGTGGTGGGACCGCTGGCACCTCGCGGCTCTGGGTACCACCTGCTGCAAGCGGA  
 CAGCATGTTGCTCGTGGCTGCCGGACCTGGAGCCTCCCCGCGCTCGTGCACCGCGCGCCCGTCCGCGC  
 GCTCCGAGGCTACTGGCTCGTGGCCCCACGGCTGTGCAAGCCAGGACCAAACCCGACCGGAGCCGT  
 CGCTCGATCAGGGCCTGGACTCTGGTTGGGAGACCGTATTCCCTTAGAAGTCTGGTGCATATTTTCGG  
 GTTGTGGTTGCGGCTCATGGGCCATGCCGTTTCTTGGCAGGGCTGCACGCGTTTGCCGTCCTGGCAC  
 GAAGCCACCTCCCATCCTCACTCTGGCATACTGTGACCTGTACCCTCGTGGTTGGCCGGGCTGGCA  
 AGGCAACCTTAAGGGAGAGAAGAAGCTCCTTGCCTGGAGTGGCTCGTACCAATCGGTTCTCTCA  
 GCTCCACAGCCTGGACCTACATCATTCCATGGTGGAGTCCACAGCTGTGGTGGAGTCTTGGAGGAGGCC  
 GGGTCCCGAATGCGTAACTGTGGCTGACTACAGTTCACAGACGACGGCCATCTGGGGCCTACTGCTGG  
 ACAACTGCTGCCACAGCTCAAAGTCTCCAGGTGAGCACTGGCATGAACTGCAACAACACCCCTGCA  
 GCTGCCTGTGGAAGCCCTGCAGAAAGGCTGCCCCAGTGCAGGTGCTGCGGCTGCTGAATCTGATTTGG  
 CTTCCCAAGCCGTGTGGCCGAGGCGTGCCCCAGGACAGGCTTCCCAAGTCTTGGAGGAGCTCTGTTTGG  
 CTGGCTCCACCTGCAACTTTGTGAGCAATGAGGTTCTGGGCCGATTGCTCCATCGCTCCCGAAACTGCG  
 CATGCTGGACCTCGAGGCTGCGCTAGGGTCACTCCTAGCGGTCTGTGTCATCTGCCATGTAAGAGCTG  
 GAGCAACTACCTGGGCTGTATGGCATACTGATGGCTTACCCTGGTAAGGATGGCAGCCCTGT  
 TGACCCGGAAGTGGTATCACACCTGAGGGAGCTGGACTTCAGTGGCAAGGCTTACAGCGAGAAGGACTT  
 GGAACAGGCCCTGGCTGTTTTCTCGGGCACCCCTGGGGGCTTACACCCAGCCTTGTGCTCCCTCAACCTG  
 AGGGGTACCCGAGTTACCCCAAGCACGGTCAGTCTGTGATTAGTGGTTGCCCGGGGCTGCTGTATCTTA  
 ACCTGGAGTCTGCTGCTGCCCTCCCGGAGGCTGAAGCGCGTCTACCGGGCCTGGAGGAAGTCCAGTG  
 GTGTCTAGAGCAGCTACTTACCAGCCGCCCTCTGCCAAAGAGCCCACT

AG**GCGACCG**ACGCGTACGCGGCCGCTCGAG - GFP Tag - GTTTAA

**Protein Sequence:**

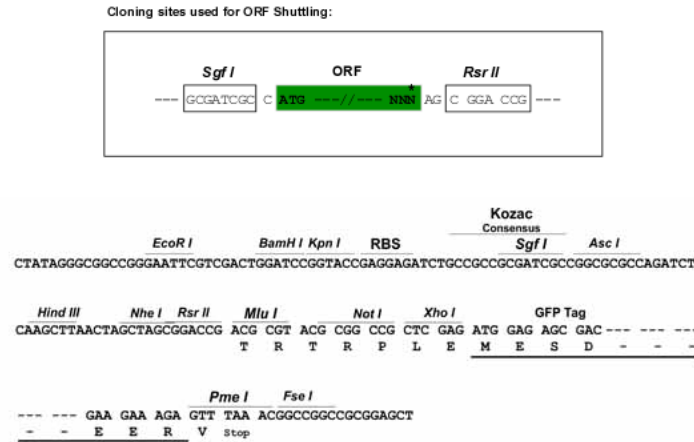
>MG207733 representing BC054377  
 Red=Cloning site Green=Tags(s)

MAPVASRRVRRRVRSSKRPDARGRSAEDWWDRAPRGSGYHLLQADSMLLVLPDLEPPRARAHRRARRR  
 APRSLARGPTAVAKPRTKPRPEPSLDQGLDSGWDRIPLEVLVHIFGLLVAAHGMPMPFLGRAARVCRHWH  
 EATSHPSLWHTVTLSPSLVGRAGKGNLKGKLLACLEWLVPNRFSQLHSLDLHHSMVSTAVVSFLEEA  
 GSRMRKLWLTYSSQTAILGALLDNCCQLQVLQVSTGMNCNNTPLQLPVEALQKQCPQLQVLRLLNLIW  
 LPKPCGRGVPQPGFPSLEELCLAGSTCNFVSNEVLGRLLHRSPKLRMLDLRGCARVTPSGLCHLPCQEL  
 EQLYLGLYGISDGLTLAKDGSPLLTRKYHTLRELDGSGQGFSEKDLEQALAVFSGTPGGLHPALCSLNL  
 RGTRVTPSTVSSVISGCPGLLYLNLESCRCLPRGLKRVYRGLLEEVQWCLEQLLSPPSAKEPT

SGP**TRRRLE** - GFP Tag - V

**Restriction Sites:**

Sgfl-RsrII

**Cloning Scheme:**


**ACCN:** BC054377

**ORF Size:** 1451 bp

**OTI Disclaimer:** The molecular sequence of this clone aligns with the gene accession number as a point of reference only. However, individual transcript sequences of the same gene can differ through naturally occurring variations (e.g. polymorphisms), each with its own valid existence. This clone is substantially in agreement with the reference, but a complete review of all prevailing variants is recommended prior to use. [More info](#)

**OTI Annotation:** This clone was engineered to express the complete ORF with an expression tag. Expression varies depending on the nature of the gene.

**Components:** The ORF clone is ion-exchange column purified and shipped in a 2D barcoded Matrix tube containing 10ug of transfection-ready, dried plasmid DNA (reconstitute with 100 ul of water).

**Reconstitution Method:**

1. Centrifuge at 5,000xg for 5min.
2. Carefully open the tube and add 100ul of sterile water to dissolve the DNA.
3. Close the tube and incubate for 10 minutes at room temperature.
4. Briefly vortex the tube and then do a quick spin (less than 5000xg) to concentrate the liquid at the bottom.
5. Store the suspended plasmid at -20°C. The DNA is stable for at least one year from date of shipping when stored at -20°C.

**RefSeq:** [BC054377](#), [AAH54377](#)

**RefSeq Size:** 1571 bp

**RefSeq ORF:** 1451 bp

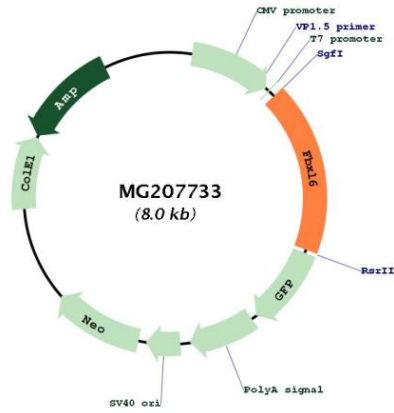
**Locus ID:** 30840

**Cytogenetics:** 15 D3

**Gene Summary:**

Substrate-recognition component of the SCF (SKP1-CUL1-F-box protein)-type E3 ubiquitin ligase complex.[UniProtKB/Swiss-Prot Function]

**Product images:**



Circular map for MG207733