

## Product datasheet for **MG207692**

### **C730048C13Rik (BC050265) Mouse Tagged ORF Clone**

#### **Product data:**

Product Type:	Expression Plasmids
Product Name:	C730048C13Rik (BC050265) Mouse Tagged ORF Clone
Tag:	TurboGFP
Symbol:	C730048C13Rik
Synonyms:	AA986766; C730048C13Rik; UST1R
Mammalian Cell Selection:	Neomycin
Vector:	pCMV6-AC-GFP (PS100010)
E. coli Selection:	Ampicillin (100 ug/mL)



[View online »](#)

**ORF Nucleotide Sequence:**

>MG207692 representing BC050265  
 Red=Cloning site Blue=ORF Green=Tags(s)

TTTTGTAATACGACTCACTATAGGGCGGCCGGAATTCGTCGACTGGATCCGGTACCGAGGAGATCTGCC  
 GCC**CGGATCGCC**

ATGGCCTTTCAGGAACCTCTGAATCAAGTTGGAAGCCTAGGAAGATTCCAGATCCTTCAGATCTCTTTTGT  
 TTCTCTTCTCGTAGGCCTGTGGTACCTCATATTACAATGGAGAAGCTTTACTGCAGCCATTCCCAATCA  
 TCGCTGCTGGGCCCCATCCTTGACAATGACACTGCCTCTGATAATGGCAGTAGGATCCTGAGCCAAAGAT  
 GACCTCTGAGGATCTCCATCCCCTGGATTCCAACCTGAGACTGGATAAATGTCGTCGTTTTGCCAAC  
 CACAGTGGCATCTTCTTCATTTGAATGGCACTTTCTCCAATGAGACAGAGCCAGACACTGAGCCCTGTGT  
 GGATGGTTGGGTGTATGACAGGAGCAACTTCTTTCTACCATTGTGACTGAGTGGACCTGGTGTGTGAA  
 TCTCAGGCACTGAATTCTGTTGCTAAATTTTCATTCATGATTGGCCTATTTATAGGGCTATCATATGTG  
 GCCATTTGTGACAGGTTGGGAGGAAGTTCAATTTAACATGTGCTTTATTACAATTTGCCATCACTGA  
 AACCTGTGTAGCTTTTGTCCCTCTTCTCATCTACTGCTTACTTCGATTCTGCAGGAATGTCTGTG  
 GAACCCATATCAGTAAATAGTCACTTGCTCATGTTAGAATGGACAAGCCCTAAATTCCTAGGCATGGTGG  
 CAGTGCTTACATCTTGTGCTGCTAGTATCGGATACATGATATTGGCAGGCTGGCTTTTCTATTTAGAAT  
 CTGGCGTACCTCCAGCTAGCAATGTCTGTGCCAATATCTTCTTCTTATACTCACAAGGTGGATGTCA  
 GAGTCGGCTCGGTGGCTGATTGTGACCAACAAACCCAGAAGGGCTTAAAGGAACCTAGAAAAGTTGCAC  
 ACATGAATGGAATGAAAAATCTGGAAATACCCTAACCATGGAGGTTGTGGAAGCAAGTATGAAGAATGA  
 ACTTGAGGCAGCAAAAAGAAAATCTTCTCCAAGAGACTTGTCCACACCCCATCTACGAAAGCGGATA  
 TGTGTCTGTCTTTATGAGATATTTATTTACAGTATCTATTTTGGCCTATCACTTCACCTCCAACACC  
 TGAGTACTAATATTATCTGTTGCAGTTTCTCAGTAGTGCATTGGGCATACTAATTAGTGTATTGGACA  
 TTTTGTCTTAATCACATGGGACGTAGAATAACTCAGCTGGTTCTCATGTCCCTGAGGGGAATATTCATG  
 TTGACTGCTGATTTGTACCTCAAGTTGGAAAGAGTCAAGACAAGCAAAGGAGGAGGATTCCATCATTAA  
 AGTCACAAGGTTTGGAGAACTCCTGGAATTGCCATCTGATCCAAGAGAAGAAAATTTTGTTCAGGACAT  
 GGTGACAATTTTCTCAGATGATTACTCAGAATCTTTTTT

**ACGCGTACGCGGCCGCTCGAG** - GFP Tag - GTTTAA

**Protein Sequence:**

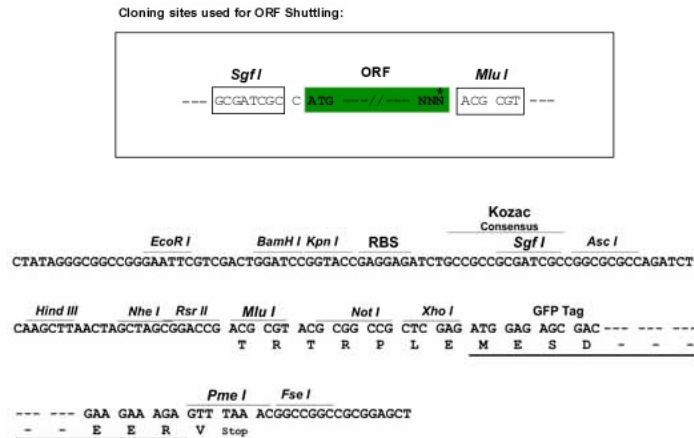
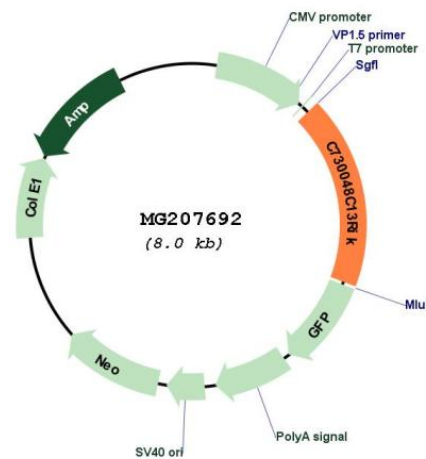
>MG207692 representing BC050265  
 Red=Cloning site Green=Tags(s)

MAFQELLNQVGS LGRFQILQISFVLFVGLVVP HITMENFTA AIPNHRCWAPILDNDTASDNGSRILSQD  
 DLLRIS IPLDSNLR LDKRRFAQPQWHLHLNGTFSNETEPDTEPCVDGWVYDRSNFLSTIVTEWDLVCE  
 SQALNSVAKFSFMIGLFIGAIICGHLSDRFGRKFI L TCALLQFAITETCVAFAPSF FFIYCLLRFLAGMSV  
 EPI SVNSHLLMLEWTS PKFLGMVAVL TSCAASIGYMILAGLAF LFRIWRHLQLAMSVPIFFFLILTRWMS  
 ESARWLI VTNKPQGLKELRKVAHMNGMKNSGNTLTMEVVEASMKNELEAAKRKSSPRDLFHTPI LRKRI  
 CVLSFMRYLFTVSIFGLSLHLQHLSTNIILLQFLSSALGILISVIGHFV LNHMGRRITQLVMSLRGIFM  
 LTA VFPVQVQKSDKQRRRIPSLK SQFEELLELPSPDREENFVQDMVTIFSDDYSEFFF

**TRTRPLE** - GFP Tag - V

**Restriction Sites:**

Sgfl-MluI

**Cloning Scheme:**

**Plasmid Map:**


**ACCN:** BC050265

**ORF Size:** 1440 bp

**OTI Disclaimer:** The molecular sequence of this clone aligns with the gene accession number as a point of reference only. However, individual transcript sequences of the same gene can differ through naturally occurring variations (e.g. polymorphisms), each with its own valid existence. This clone is substantially in agreement with the reference, but a complete review of all prevailing variants is recommended prior to use. [More info](#)

**OTI Annotation:** This clone was engineered to express the complete ORF with an expression tag. Expression varies depending on the nature of the gene.

**Components:** The ORF clone is ion-exchange column purified and shipped in a 2D barcoded Matrix tube containing 10ug of transfection-ready, dried plasmid DNA (reconstitute with 100 ul of water).

**Reconstitution Method:**

1. Centrifuge at 5,000xg for 5min.
2. Carefully open the tube and add 100ul of sterile water to dissolve the DNA.
3. Close the tube and incubate for 10 minutes at room temperature.
4. Briefly vortex the tube and then do a quick spin (less than 5000xg) to concentrate the liquid at the bottom.
5. Store the suspended plasmid at -20°C. The DNA is stable for at least one year from date of shipping when stored at -20°C.

**RefSeq:** [BC050265.1](#)

**RefSeq Size:** 2029 bp

**RefSeq ORF:** 1442 bp

**Locus ID:** 319800

**Cytogenetics:** 19 A