

Product datasheet for **MG207687**

Creb3l3 (NM_145365) Mouse Tagged ORF Clone

Product data:

| | |
|---------------------------|--|
| Product Type: | Expression Plasmids |
| Product Name: | Creb3l3 (NM_145365) Mouse Tagged ORF Clone |
| Tag: | TurboGFP |
| Symbol: | Creb3l3 |
| Synonyms: | BC010786; CREB-H; D10Bur1e |
| Mammalian Cell Selection: | Neomycin |
| Vector: | pCMV6-AC-GFP (PS100010) |
| E. coli Selection: | Ampicillin (100 ug/mL) |



[View online »](#)

ORF Nucleotide Sequence:

>MG207687 representing NM_145365
 Red=Cloning site Blue=ORF Green=Tags(s)

TTTTGTAATACGACTCACTATAGGGCGGCCGGGAATTCGTCGACTGGATCCGGTACCGAGGAGATCTGCC
 GCC**CGGATCGCC**

ATGGATGGGGACATAGCGGCTGGAAAGATGGCGTCCCCTGTCTGTGCTATGGCGCCCTTGGACAGCATGG
 AGGTCCTTGACCTCCTGTTTGATCGGCAGGACGGCATCCTGAGAAACGTGGAGCTGGCCGAGGGCTGGAT
 CCTCGCCAGAGAGGAGCAGAAAGTTCTACTAAATTCTGATTCTGATGAATTCCTAAATTGCATCCTGGGA
 CCTGGAGACTCTGACCCAGCTCTCATTATGGTCCCCGCTGACAGTGACAGTGGCATCTCTGAGGATC
 TACCTTCAGACCCAGGACACCCCTCCTCGTAGTGGCACTGAACCAGCCAACACGGTAGCCAGGTGTCA
 CACCAGGGAGCAAGGCAAGGGGCCCTGCCCTCCTATCTGCCAGCACCCATGCCCTGAGCCTCCAAGG
 ACACAAGTCCAGGAGTCTCAGTGGCCATTGACCTGGACATGTGGAGCACAGATACCTGTACCCGGAGG
 AGCCGGCTGGCTGCCCTCCCGTTCAACCTACTGTGAAGGAAGTGTCTGTCCGGTGGCAGCGGGGA
 CTTGCAACAGCATTCTTGGCTGCCTCCAGCTGCTGGGACCTGGGAGTGGGCACTGCCAGGAGCTGGTG
 CTGACAGAGGATGAGAAGAAGCTGCTGGCTAAAGAGGGGGTGACCTCCCCACCCAGCTGCCTCTACCA
 AGTATGAGGAACGAGTTTTGAAAAAATCCGCAGAAAGATCCGGAAACAAACAGTCAGCTCAAGAAAGCAG
 GAAGAAGAAAAAGAATACATTGATGGTCTGGAGAACCGATGTCAGCGTGTACTGCCAGAACCAGGAG
 CTGCAGAGGAAGGTTTTGCATTTAGAAAAGCAAAATTTGTCTTCTGGAGCAGCTGAAACACCTGCAGG
 CACTTGTGGTCCAGTCAACCAGCAAGCCAGCCCATGCAGGCACCTGCATAGCGGTCTTCTGCTGCCTT
 CGCCCTGATCATCCTCCCTCCATCAGCCCTTCAACTCCAACAAAGTTGACAGCCCTGGAGACTTCGTG
 CCAGTGGAGTGTTCAGAACCTCCACAACCAGCTGCATCCCGCGTGGCTCCCGATGTCACCCAG
 GATCTGAGGTCCAGACCTTGGCCGACGTTGGTACCCCCACAAAGGCCCTTCTCCGGTGGTCTCAG
 TGCAGACTGGGGAAATTTCTGGAAATTCGAATGTTGGACAACCTGACAGAAGAGCTAGACAACCTCACC
 CTGGTGTGGCCAACTCCACAGAGGACCTGGGACGGGCCACCCTGCTGGACTGGGTGGCTTCAGAACCAC
 TGCTCAGTCCAGGCCGGTTGGGCTGGAGATACCAGGGGAGATGTGGCTGTCTGGGTACCAAGGTGGCT
 TAGGGTCCGTCTGGTGAAGATGCATTGGGGGTGCTG

ACGCGTACGCGGCCGCTCGAG – GFP Tag – GTTTAA

Protein Sequence:

>MG207687 representing NM_145365
 Red=Cloning site Green=Tags(s)

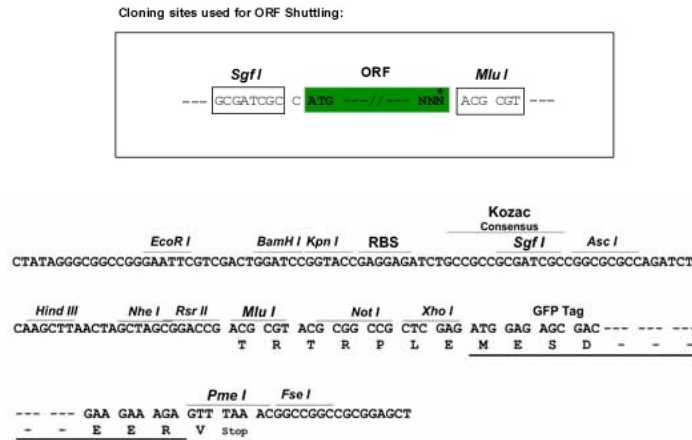
MDGDI AAGKMASPVCAMAPLDSMEVLDLLFDRQDGI LRNVELAEGWILAREEQKVL LNDSDEFLNCILG
 PGDSDPSSPLWSPADSDSGISEDLPSPDQTPPRSGTEPANTVARCHTREQKGKPCPSYLPSTPCPEPPR
 TQVQESSVAIDLDMWSTDLYPEEPAGSPSRFNLTKVKE LL SGGSGDLQQHSLAASQLLGP GSGHCQELV
 LTEDEKLLAKEGVTLPTQLPLTKYEERVLK KIRRKIRNKQSAQESRKKKKEYIDGLENRMSACTAQNQE
 LQRKVLHLEKQNL SLEQLKHLQALVVQSTSKPAHAGTCIAVLLLSFALIILPSISPFNSNKVDS PGDFV
 PVRVFSRTLHNHAASRVAPDVTGSEVPGPWPDVGTGPHKGPSSGGLSADWGNFLEIPMLDNLTEELDNST
 LVLANSTEDLGRATLLDWVASEPLLSPGRVGL EIPGEMWLSWVPRWLRVRLVQDALGVL

TRTRPLE – GFP Tag – V

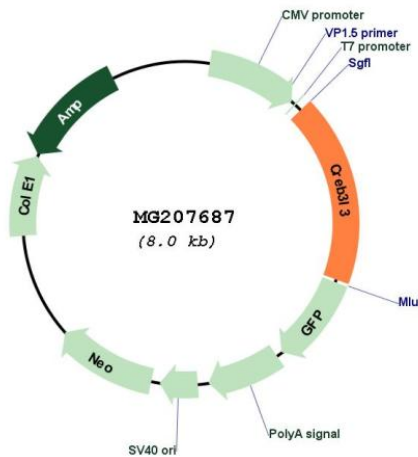
Restriction Sites:

Sgfl-MluI

Cloning Scheme:



Plasmid Map:



ACCN: NM_145365

ORF Size: 1437 bp

OTI Disclaimer: The molecular sequence of this clone aligns with the gene accession number as a point of reference only. However, individual transcript sequences of the same gene can differ through naturally occurring variations (e.g. polymorphisms), each with its own valid existence. This clone is substantially in agreement with the reference, but a complete review of all prevailing variants is recommended prior to use. [More info](#)

OTI Annotation: This clone was engineered to express the complete ORF with an expression tag. Expression varies depending on the nature of the gene.

Components: The ORF clone is ion-exchange column purified and shipped in a 2D barcoded Matrix tube containing 10ug of transfection-ready, dried plasmid DNA (reconstitute with 100 ul of water).

Reconstitution Method:

1. Centrifuge at 5,000xg for 5min.
2. Carefully open the tube and add 100ul of sterile water to dissolve the DNA.
3. Close the tube and incubate for 10 minutes at room temperature.
4. Briefly vortex the tube and then do a quick spin (less than 5000xg) to concentrate the liquid at the bottom.
5. Store the suspended plasmid at -20°C. The DNA is stable for at least one year from date of shipping when stored at -20°C.

RefSeq: [NM_145365.3](#)

RefSeq Size: 2284 bp

RefSeq ORF: 1440 bp

Locus ID: 208677

UniProt ID: [Q91XE9](#)

Cytogenetics: 10 39.72 cM

Gene Summary: Transcription factor that may act during endoplasmic reticulum stress by activating unfolded protein response target genes. Activated in response to cAMP stimulation. Binds to the cAMP response element (CRE). Activates transcription through box-B element (By similarity). Activates transcription through CRE. Seems to function synergistically with ATF6. In acute inflammatory response, may activate expression of acute phase response (APR) genes. May be involved in growth suppression.[UniProtKB/Swiss-Prot Function]