

## Product datasheet for **MG207670**

### Neu4 (NM\_173772) Mouse Tagged ORF Clone

#### Product data:

Product Type:	Expression Plasmids
Product Name:	Neu4 (NM_173772) Mouse Tagged ORF Clone
Tag:	TurboGFP
Symbol:	Neu4
Synonyms:	9330166I04
Mammalian Cell Selection:	Neomycin
Vector:	pCMV6-AC-GFP (PS100010)
E. coli Selection:	Ampicillin (100 ug/mL)



[View online »](#)

**ORF Nucleotide Sequence:**

>MG207670 representing NM\_173772  
 Red=Cloning site Blue=ORF Green=Tags(s)

TTTTGTAATACGACTCACTATAGGGCGGCCGGAATTCGTCGACTGGATCCGGTACCGAGGAGATCTGCC  
 GCC**GCGATCGCC**

ATGGGGCCCACGGTGTCCAGGAGAACGGTGTCTTCCAGAGGAAAGGACGGGCCTGACCTACCGTG  
 TGCTGCGTTACTCTGTGTGCCTCCCAGGCCTACTCTGCTGGCCTTCGCGGAACAGCGACTTAGCCCTGA  
 TGACTCCCATGCCACCGCCTGGTGTACGGAGGGGCACGCTGACCAGGGGCTCAGTGCGGTGGGCACT  
 CTGAGTGTACTGGAGACTGCAGTACTGGAGGAGCACAGGTCTATGAACCTTGCCCGGTGCTGGATGAGC  
 ACTCTGGTACCATCTTCCTTTCTTATTGCCGTGCTGGGCCACACACCGGAGGCCGTCAAATCGCCAC  
 TGGCAAGAACGCTGCTCGCCTCTGCTGTGTGACCAGCTGTGACGCTGGCCTCACCTGGGGCAGTGTTCGA  
 GATCTCACTGAGGAAGCCATTGGTGTGCATTGCAGGACTGGGCCACCTTTGCTGTGGTCCGGGCCATG  
 GAGTTCAGCTGCGCTCGGTGCGCTGCTTGTTCCTGCTTACACCTATCATGTGGACCGACGGGAATGTTT  
 TGGCAAGATCTGTGGACCAGTCCCACCTTGGCATTCTACAGTGATGATCATGGGATCTCCTGGCAT  
 TGTGGAGCCCTTGTGCCAACCTACGCTCTGGAGAGTGCCAACTGGCTGCGGTAGATGGAGACTTTCTCT  
 ACTGTAATGCTCGAAGCCCTCTGGGTAACCGTGTGCAGGCACTGAGTGTGATGAAGGCACGTCCTTCTCT  
 ACCAGGGGAGCTGGTGCCTACATTGGCAGAGACGGCTCGTGGTGGCAGGGTAGCATTGTGGGCTTCCCTA  
 GCTCCACCCTCAATCGAGCCTCAGGATGACCGGTGGACAGGGAGTCTTAGGAACACCCACATCCCCAT  
 GCTTCAATCTCAGAGTACAGGAGTCTTCGGGGGAAGGTGCCAGAGGTCTTCTTGAACGTTGGATGCCAG  
 GTTGCCTCTCTGCTACCCACAGTCCCGGAGCCAGAGAATCATGGCCTAGAGCCTGGGTCAGATGGAGAT  
 AAGACATCCTGGACTCCGGAATGCTCTATGTCTCTGATTCCATGCTTACAGACCCACATGGCCTACTAT  
 ATTCCCACCCAGCAGGGCGTAGAGCTCGGCTCCACATGGGAATCTACCTGAGCCGATCCCCCTGGATCC  
 CCACAGCTGGACAGACCCTGGGTGATCTATGAGGGCCCCAGTGCTACTCTGACCTTGCCTTTCTTGGG  
 CCTATGCCTGGGCATCCCTGGTTTTGCTGTCTGTTTGGAGAGCGGGACCAGGACTTCTATGAAGACA  
 TTTCTTTTGTGTTCTCACTGGCGGATGCTCTGGAGAATGTGCCCACTGGCTTAGAGATGCTAAGTCT  
 CAGGGATAAGGCTCAGGGCATTGCTGGCCCTCT

AG**CGGACCG**ACGCGTACGCGGCCGCTCGAG – GFP Tag – GTTTAA

**Protein Sequence:**

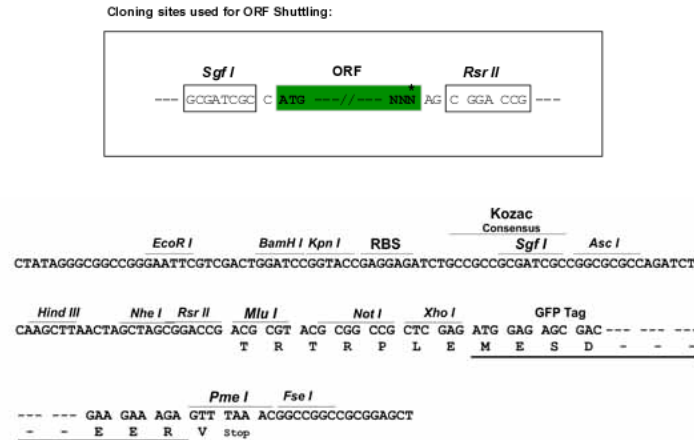
>MG207670 representing NM\_173772  
 Red=Cloning site Green=Tags(s)

MGPTRVPRRTVLFQERTGLTYRVPALLCVPPRPTLLAFAEQRLSPDDSHAHRLVLRRTLRGTSVRWGT  
 LSVLETAVLEEHRSMNCPVLDHSGTIFLFFIAVLGHTPEAVQIATGKNAARLCCVTSCDAGL TWGSVR  
 DLTEEAIGAALQDWATFVAVGPGHGVQLRSGRLLVPAYTYHVDRECFGKICWTSPhSLAFYSDDHGISWH  
 CGGLVPNLRSGECQLAAVDGDFLYCNARSPLGNRVQALSADEGTSFLPGELVPTLAETARGCQGSIVGFL  
 APPSIEPQDDRWTGSPRNTPHSPCFNLRVQESSGEGARGLLERWMPRLPLCYPQSRSPENHGLEPGSDGD  
 KTSWTPECPMSSDMLQSPTWLLYSHPAGRRARLHMGIYLSRSPLDPHSWTEPWVIYEGPSGYSDLAFLG  
 PMPGASLVFACLFESGTRTSYEDISFCLFSLADVLENVPTGLEMLSLRDKAQGHCWPS

SGPTRRRLE – GFP Tag – V

**Restriction Sites:**

Sgfl-RsrII

**Cloning Scheme:**


**ACCN:** NM\_173772

**ORF Size:** 1434 bp

**OTI Disclaimer:** The molecular sequence of this clone aligns with the gene accession number as a point of reference only. However, individual transcript sequences of the same gene can differ through naturally occurring variations (e.g. polymorphisms), each with its own valid existence. This clone is substantially in agreement with the reference, but a complete review of all prevailing variants is recommended prior to use. [More info](#)

**OTI Annotation:** This clone was engineered to express the complete ORF with an expression tag. Expression varies depending on the nature of the gene.

**Components:** The ORF clone is ion-exchange column purified and shipped in a 2D barcoded Matrix tube containing 10ug of transfection-ready, dried plasmid DNA (reconstitute with 100 ul of water).

**Reconstitution Method:**

1. Centrifuge at 5,000xg for 5min.
2. Carefully open the tube and add 100ul of sterile water to dissolve the DNA.
3. Close the tube and incubate for 10 minutes at room temperature.
4. Briefly vortex the tube and then do a quick spin (less than 5000xg) to concentrate the liquid at the bottom.
5. Store the suspended plasmid at -20°C. The DNA is stable for at least one year from date of shipping when stored at -20°C.

**RefSeq:** [NM\\_173772.3](#), [NP\\_776133.1](#)

**RefSeq Size:** 4524 bp

**RefSeq ORF:** 1437 bp

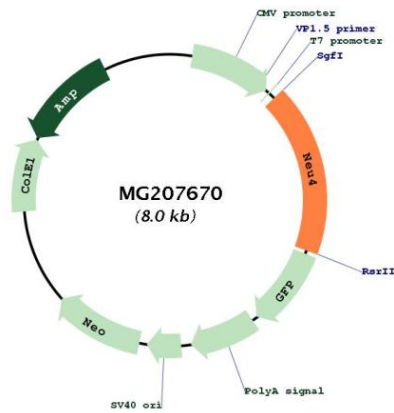
**Locus ID:** 241159

**UniProt ID:** [Q8BZL1](#)

Cytogenetics: 1 D

Gene Summary: May function in lysosomal catabolism of sialylated glycoconjugates. Has sialidase activity towards synthetic substrates, such as 2'-(4-methylumbelliferyl)-alpha-D-N-acetylneuraminic acid (4-MU-NANA or 4MU-NeuAc). Has a broad substrate specificity being active on glycoproteins, oligosaccharides and sialylated glycolipids (By similarity).[UniProtKB/Swiss-Prot Function]

**Product images:**



Circular map for MG207670