

Product datasheet for **MG207644**

Agt (NM_007428) Mouse Tagged ORF Clone

Product data:

Product Type:	Expression Plasmids
Product Name:	Agt (NM_007428) Mouse Tagged ORF Clone
Tag:	TurboGFP
Symbol:	Agt
Synonyms:	AI265500; AngI; AngII; Aogen; Serpina8
Mammalian Cell Selection:	Neomycin
Vector:	pCMV6-AC-GFP (PS100010)
E. coli Selection:	Ampicillin (100 ug/mL)



[View online »](#)

ORF Nucleotide Sequence:

>MG207644 representing NM_007428
 Red=Cloning site Blue=ORF Green=Tags(s)

TTTTGTAATACGACTCACTATAGGGCGGCCGGAATTCGTCGACTGGATCCGGTACCGAGGAGATCTGCC
 GCC**CGGATCGCC**

ATGACTCCCACGGGGCAGGCCCTGAAGGCCACCATCTTCTGCATCTTGACCTGGGTGAGCCTGACGGCTG
 GGGACCGGTATACATCCACCCCTTCCATCTCCTTTACCAACAACAGAGCACCTGCGCCAGCTGGAGAA
 CCCAGTGTGGAGACACTCCAGAGTCAACGTTGAGCCTGTGCCATTAGGCCAAGACCTCCCCTGTG
 AATGAGAAGACCTGCATGATCAGCTCGTGTGGCCGCCGAGAAGCTAGAGGATGAGGACCGGAAGCGGG
 CTGCCAGGTGCAATGATCACCAACTTCGTGGGCTTCCGCATGTACAAGATGCTGAATGAGGCAGGAAG
 TGGGGCCAGTGGGGCCATCCTCTACCACCAGCTCTTTTGGCACCTGGTCTCTTTCTACCTTGGATCC
 TTAGATCCCACGGCCAGCCAGCTGCAGACGCTGCTGGATGTCCCTGTGAAGGAGGGAGACTGCACCTCCC
 GACTAGATGGACACAAGGTCCTCGCTGCCCTGCGGGCCGTTGAGGGCTTGTGGTCAACCAGGGTGGGAG
 CAGCAGCCAGACACCCCTGCTACAGTCCATTGTGGTGGGGCTTCTCACTGCCCCAGGCTTTCGTCTAAAG
 CACTCATTGTTCAGAGCCTGGCTCTTTACCCCTGCCCTTCCCACGCTCTCTGGATTATCCACTG
 ACCCAGTCTTGGCACTGAGAAAATCAACAGGTTCAAAAGGCTGTGACAGGGTGAAGATGAACCTTGGC
 ACTGGAGGGGTGAGTACAGACAGCACCCCTACTTTTCAACACCTACGTTCACTTCCAAGGAACGATGAGA
 GGTTTCTCTCAGCTGCCTGGAGTCCATGAATCTGGGTGGACAACAGCATCTCGGTGTCTGTGCCATGA
 TCTCCGGCACTGGCAACTCCAGCACTGGAGTGACGCCCAGAACAACCTTCTCCGTGACGTGCGTGCCCT
 AGGTGAGAGAGCCACCCTGCTGCTATCCAGCCCCACTGCATCTCAGATCTGACAGGGTGGAGGCCCTC
 GTGTTCCAGAACGACCTCCTGACTTGGATAGAGAACCCGCCTCCTCGGCCATCCGCCTGACTCTGCCCC
 AGCTGGAATCCGAGGATCTACAATCTGCAGGACCTGCTGGCTGAGGACAAGCTGCCACCCCTTTGGG
 TCGGGAGGCAAACTGAACAACATTGGTGACACCAACCCCGAGTGGGAGAGGTTCTCAATAGCATCCTC
 CTGAACTCAAAGCAGGAGAGGAGGAACAGCCGACCACGTCTGTCCAGCAGCCTGGCTCACCGGAGGCAC
 TGGATGTGACCCTGAGCAGCCCCTTCTGTTCCGCATCTACGAGCAGGACTCAGGCACGCTGCACTTTCT
 GGGCAGAGTGAATAACCCCCAGAGTGTGGTG

ACGCGTACGCGGCCGCTCGAG - GFP Tag - GTTTAA

Protein Sequence:

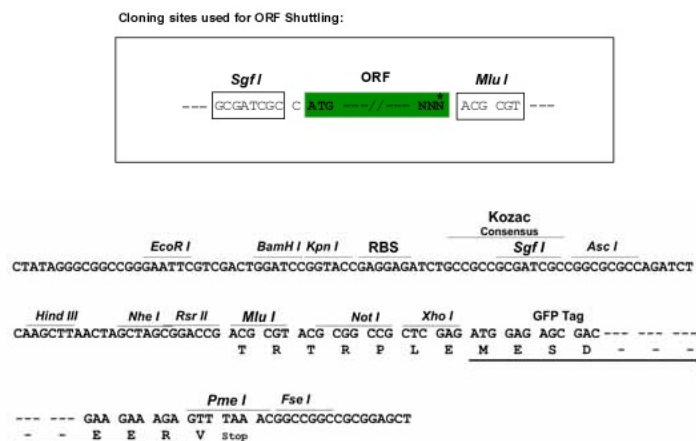
>MG207644 representing NM_007428
 Red=Cloning site Green=Tags(s)

MTPTGAGLKATIFCILTWVSLTAGDRVYIHPFHLLYHNKSTCAQLENPSVETLPESTFEPVPIQAKTSPV
 NEKTLHDQLVLA AEKLEDEDRKRAAQVAMITNFVGFMYKMLNEAGSGASGAILSPPALFGTLVSFYLG
 LDPTASQLQTL LDVPVKEGDCTSR LDGHKVLAA LRAVQGLLVTQGGSSSQTPLLQSIVVGLFTAPGFR
 LKHSFVQSLALFTPALFPRSLDLSTDPVLATEKINRFIKAVTGWKMNLPLEGVSTDSL LFNTRYVHFQGT
 MRGFSQLPGVHEFWVDNSISVSVPMISGTFGNFQHWSDAQNNF SVTCVPLGERATLLL I QPHCISDLDR
 VEALVFQNDLLTWIENPPRAIRLTLPLQLEIRGSYNLQDLLAEDKLP TLLGAEANLNNIIGDTNPRVGEV
 LNSILLELKAGEEEQPTTSVQQPGSPEALDVTLSSPFLFAIYEQDSGTLHFLGRVNNPQSVV

TRTRPLE - GFP Tag - V

Restriction Sites:

Sgfl-Mlul

Cloning Scheme:


ACCN: NM_007428

ORF Size: 1446 bp

OTI Disclaimer: The molecular sequence of this clone aligns with the gene accession number as a point of reference only. However, individual transcript sequences of the same gene can differ through naturally occurring variations (e.g. polymorphisms), each with its own valid existence. This clone is substantially in agreement with the reference, but a complete review of all prevailing variants is recommended prior to use. [More info](#)

OTI Annotation: This clone was engineered to express the complete ORF with an expression tag. Expression varies depending on the nature of the gene.

Components: The ORF clone is ion-exchange column purified and shipped in a 2D barcoded Matrix tube containing 10ug of transfection-ready, dried plasmid DNA (reconstitute with 100 ul of water).

Reconstitution Method:

1. Centrifuge at 5,000xg for 5min.
2. Carefully open the tube and add 100ul of sterile water to dissolve the DNA.
3. Close the tube and incubate for 10 minutes at room temperature.
4. Briefly vortex the tube and then do a quick spin (less than 5000xg) to concentrate the liquid at the bottom.
5. Store the suspended plasmid at -20°C. The DNA is stable for at least one year from date of shipping when stored at -20°C.

RefSeq: [NM_007428.2](#)

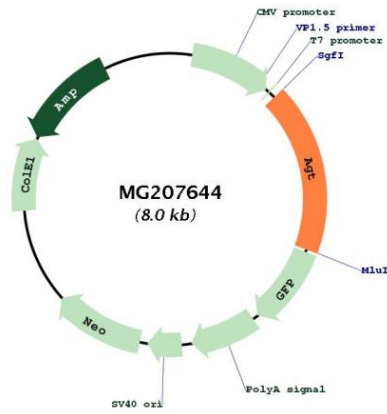
RefSeq Size: 1856 bp

RefSeq ORF: 1449 bp

Locus ID: 11606

Cytogenetics: 8 72.81 cM

Product images:



Circular map for MG207644