

Product datasheet for **MG207617**

Atxn10 (NM_016843) Mouse Tagged ORF Clone

Product data:

Product Type:	Expression Plasmids
Product Name:	Atxn10 (NM_016843) Mouse Tagged ORF Clone
Tag:	TurboGFP
Symbol:	Atxn10
Synonyms:	AI325283; C77170; E46; Sca10; TEG-169; Tex169
Mammalian Cell Selection:	Neomycin
Vector:	pCMV6-AC-GFP (PS100010)
E. coli Selection:	Ampicillin (100 ug/mL)



[View online »](#)

ORF Nucleotide Sequence:

>MG207617 representing NM_016843
 Red=Cloning site Blue=ORF Green=Tags(s)

TTTTGTAATACGACTCACTATAGGGCGGCCGGAATTCGTCGACTGGATCCGGTACCGAGGAGATCTGCC
 GCCCGCATCGCC

ATGGCGCGCCAGGATGCCACCCTCCCGCTGTCGGGCATCATGGTGCCCGCACCCATCCAGGACCTGG
 AGGCCTTGCGCGCGCTCACGGCGCTCTTCAAGGAGCAGCGTAACCGGAAACAGCACCCAGAACGATCTT
 CCAGAGAGTCTGGATATCTTAAAGAAGTCTACTCATGCTGTTGAGCTGGCCTGCAGGGATCCCTCCCAA
 GTGGAACATCTGGCTTCCAGTCTGCAGCTAATCACTGAATGCTTCAGATGTCTTCGGAATGCTTGTATAG
 AGTGTCTGTGAATCAGAATCCATCAGGAACCTGGATACGATCGGAGTTGCTGTTGATTGGTTCTTCT
 CTTTCGTAACCTCGGGTGAACAAGACTCCTTGTGACAGCTTTTCGATGTGCCTGCAGTTTTTAGGC
 AACGTTGCCTCACGAAATGAAGAATCCCAGTCCATTGTTGGGTCCACGCCTTCCAGAACTCTTCATGT
 CTTGCTGAACCATCCAGACAAAAGATTGTTGCCTACTGTTCCATGATTCTGTTACATCTCTTAATGC
 TGAAGGATGAAAGACCTGGAAGAGAACCTCAATATTGCAATTAACGTCATAGAAGCTCACAAAAGCAC
 CCGGCGTCAGAGTGGCCGTTCTTGATTATTTAGACCCTTTCTGAAAAGCCCGAACTGGTGGAAGCTA
 TGTATGGCAAACCTCAGCAACCAGGAAAGGATCACACTGTTAGACATAGTGATAGCCAAGCTAGTGGGTGA
 GGAGCAGCTGACAAAGGATGACATCTCTATCTTTGTGCGCCATGCCGAGTTGATTGCAAACCTCATTTATG
 GATCAGTGCAGGAACGTGCTGAAGTTGACCTCAGAGCCTCACACCGAGGATAAGGAAGCCCTGGTTACGA
 TTCGGCTCCTGGATGTCTGTGTGAAATGACGTCACACTGAGCTTCTCGGCTACCTGCAGTTTTTCCC
 TGGCCTGATGGAACGCGTGATTGATGTTTTACGAGTGATTCATGAAGTTGGAAAAGAAAGCACGAACATC
 TTCAGTCCCTCAGACTCTCTAAAAGCAGAGGGTGACATCGAACACATGACTGAAGCTTTAAGTCTCATC
 TCATCCGCTGATTGAAATCTGTGCTACAAGAATAAAGAAAACCAAGACAAAGTGAATGAGCTGGATGG
 CATTCTCTGATCCTGGACAGCAGCAACATCGATGACAACAACCCCTTTATGATGCAGTGGGTGGTGTAT
 GCTGTGCGAAATCTCACTGAAGCAACAGCCAAAACCAAGATGTCATTGCCAAGATGGAGGAGCAGGGCT
 TGGCAGACGCATCCCTACTGAAGAAAATGGGCTTTGAAATTGAAAAGAGTGGGGATAAACTGATTCTGAA
 GTCTAATAATGACATCCCCCGCCT

AGCGGACCGACGCGTACGCGGCCGCTCGAG - GFP Tag - GTTTAA

Protein Sequence:

>MG207617 representing NM_016843
 Red=Cloning site Green=Tags(s)

MAAPRMPPSRLSGIMVPAPIQDLEALRALTALFKEQRNRETAPRTIFQRVLDILKKSTHAVELACRDPSQ
 VEHLASSLQLITECFRLRNACIECSVNQNSIRNLDITIGVAVDL VLLFREL RVEQD SLLTAFRCGLQFLG
 NVASRN EESQSI VVWHAFPELFMSCLNHPDKKIVAYCSMILFTSLNAERMKDLEENLNIAINVIEAHQKH
 PASEWPFLLIISDHFLKSPPELVEAMYGKLSNQRITLLDIVIAKLVGEEQLTKDDISIFVRHAELIANSFM
 DQCRNVLKL TSEPHTEDKEALVTIRLLDVLCEMTSNTPELLGYLQVFPGLM ERVIDLRVIHEVGKESTNI
 FSPSDSLKAEGDIEHMTGFKSHLIRLIGNLCYKNKENQKVNELDGIPLILDSSNIDNNPFMMQWVVY
 AVRNLTEDNSQNQDVIKMEEQGLADASLLKMGFEIEKSGDKLILKSNNDIPPP

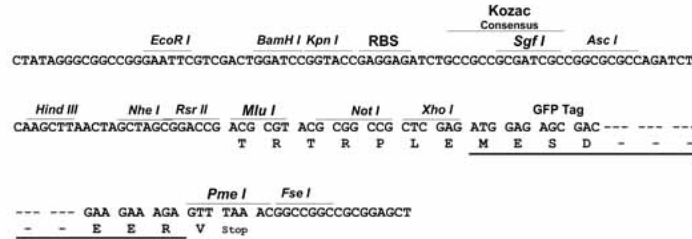
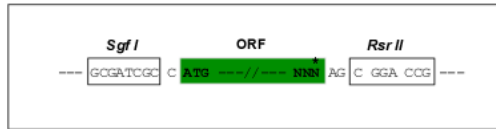
SGPTRRRLE - GFP Tag - V

Restriction Sites:

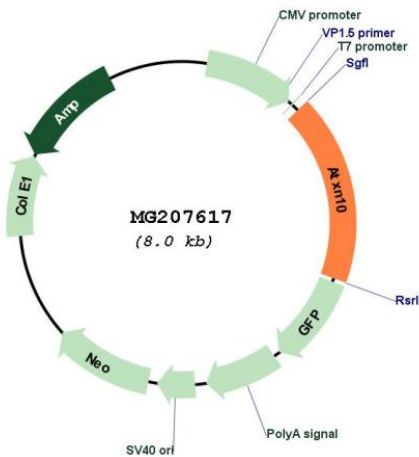
Sgfl-RsrII

Cloning Scheme:

Cloning sites used for ORF Shuttling:



Plasmid Map:



ACCN: NM_016843

ORF Size: 1425 bp

OTI Disclaimer: The molecular sequence of this clone aligns with the gene accession number as a point of reference only. However, individual transcript sequences of the same gene can differ through naturally occurring variations (e.g. polymorphisms), each with its own valid existence. This clone is substantially in agreement with the reference, but a complete review of all prevailing variants is recommended prior to use. [More info](#)

OTI Annotation: This clone was engineered to express the complete ORF with an expression tag. Expression varies depending on the nature of the gene.

Components: The ORF clone is ion-exchange column purified and shipped in a 2D barcoded Matrix tube containing 10ug of transfection-ready, dried plasmid DNA (reconstitute with 100 ul of water).

Reconstitution Method:

1. Centrifuge at 5,000xg for 5min.
2. Carefully open the tube and add 100ul of sterile water to dissolve the DNA.
3. Close the tube and incubate for 10 minutes at room temperature.
4. Briefly vortex the tube and then do a quick spin (less than 5000xg) to concentrate the liquid at the bottom.
5. Store the suspended plasmid at -20°C. The DNA is stable for at least one year from date of shipping when stored at -20°C.

RefSeq: [NM_016843.4](#)

RefSeq Size: 2427 bp

RefSeq ORF: 1428 bp

Locus ID: 54138

UniProt ID: [P28658](#)

Cytogenetics: 15 E2

Gene Summary: Necessary for the survival of cerebellar neurons. Induces neuritogenesis by activating the Ras-MAP kinase pathway. May play a role in the maintenance of a critical intracellular glycosylation level and homeostasis.[UniProtKB/Swiss-Prot Function]