

Product datasheet for **MG207600**

Pars2 (NM_172272) Mouse Tagged ORF Clone

Product data:

Product Type:	Expression Plasmids
Product Name:	Pars2 (NM_172272) Mouse Tagged ORF Clone
Tag:	TurboGFP
Symbol:	Pars2
Synonyms:	BC027073
Mammalian Cell Selection:	Neomycin
Vector:	pCMV6-AC-GFP (PS100010)
E. coli Selection:	Ampicillin (100 ug/mL)



[View online »](#)

ORF Nucleotide Sequence:

>MG207600 representing NM_172272
 Red=Cloning site Blue=ORF Green=Tags(s)

TTTTGTAATACGACTCACTATAGGGCGGCCGGAATTCGTCGACTGGATCCGGTACCGAGGAGATCTGCC
 GCC**CGATCGCC**

ATGGAAGTCTGCTGACAAGATGCAGAACACTGTCTGCCTTGGCTGCCTGCAGCCTCCGTCCTGTCAGAT
 ACATCATCCACAAGTGTACCATCGTGCGCCCGGAGAGGGCAGCGCTTGGTATTATCCCGCATGTTCCA
 GCCTCAGAACCTTCGGGAAGACCAGGTGCTTTCTCTGGAGGGCAGAGCTAGCGACCTGACCTGTAAGAGC
 CAGCGGCTGATGCTGCAAGTGGGCTGATCCTTCCAGCCAGCCCTGGCTGTTACCACCTCATGCCCTATA
 CAGTGCCTGCCGTGGAGAAGCTTGTGCGGGTGATAGACCAGGAGATGCAGGCCATCGCGGGCAGAAAAT
 CAACATGCCAGCCTCAGCCAGCTGAGCTGTGGCGGGCCACCAGCCGCTGGGACCTGATGGCAGGGAG
 CTGCTGAGACTGAGAGACAGGCACGGCAAAGAGTACTGCTTGGGACCGACTCATGAGGAAGCGTTACAG
 CCCTGGTTGCCTCCAGAAGAACTTCTACAAGCAGCTCCCTTGTGTTGTACCAGTTACAAGGAA
 GTTTCGGGATGAGCCAGGCCCGGTTTGGTCTTCTCCGTGGCCGGGAGTTCTATATGAAGGACATGTAC
 ACCTTTGATTCTCTCTGAGGCTGCCAGGAACTACGGCCTGGTGTGTGATGCTTACTGTAGGCTGT
 TTGACAGGCTGGGATTGCAATGGATGAAGGCCAGGGCAGATGTGGGCAGCATCGGGGCACGATGTCCCA
 TGAATCCAGCTACCACTGGACATTGGAGAGGACCGCCTTGTGGTCTGTCCAGCTGCCACTTCTCCGCC
 AACACAGAGATACTAGACTTGTCAAAAAATCTGCCCTGACTGCCAGGGTCCACTGACAGAAAACAAAAG
 GCATTGAGGTGGGGCACACATTCTACCTTAGTACCAAGTACTCTTCCATTTTCAATGCCCTCTTTACCAA
 TGCCCATGGGGAATCTTGTGGCTGAAATGGGGTGCTACGGGCTGGGAGTCACTCGGATCTGGCTGCA
 GCCATCCGAAGTTCTCTACGGAAGACTGCATCCGCTGGCCCCGCTCCTTGGCCCTTACCAAGTCTGTG
 TCATCCCCCTAAGAAAGCAGCAAGGAGACAGCAGCCACAGAGATTGTGGAGAAGTTATATGATGATGAT
 CATGGAGGCTGTGCCCAAGCTCCGAGGGGAGGTCTCTGTTGACGACAGGACCCACCTGACCATTTGAAAC
 AGACTGAAAGATGCCAACAAGCTTGGCTACCCCTTGTGATCATTGCGGGCAAGAGGGCCTTGGAGGACC
 CAGCACACTTTGAGGTTTGGTCTCAGAACACTGGTGGAGTGGTCTTCTCACAAAGAGGGAGTCATGGA
 ACTACTAACTGGAGTGCATGTTGTC

ACGCGTACGCGGCCGCTCGAG - GFP Tag - GTTTAA

Protein Sequence:

>MG207600 representing NM_172272
 Red=Cloning site Green=Tags(s)

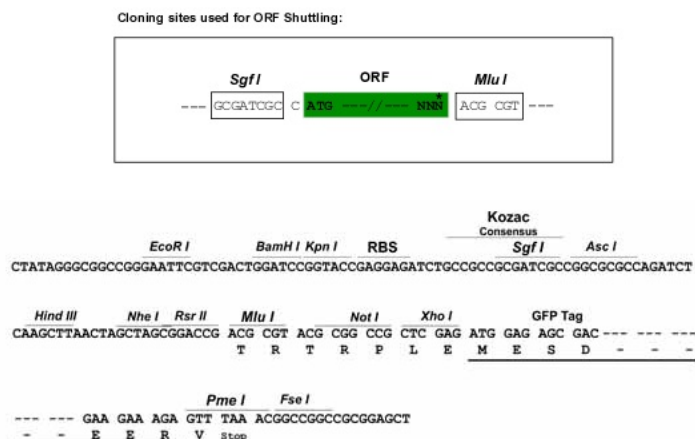
MEGLLTRCRTLSALAACSLRHCRYIIHKCYHRAPGRGQRLVLSRMFQPQNLREDQVLSLEGRASDLTCKS
 QRLMLQVGLILPASPGCYHLMPTVRAVEKLVRFIDQEMQAIIGGQKINMPSPSPAEWRATSRWDLMGRE
 LLRLRDRHGKEYCLGPTHEEAVTALVASQKLSYKQLPLLLYQVTRKFRDEPRPRFGLLRGREFYMKDMY
 TFDSSSEAAQETYGLVCDAYCRLFDRGLQWMMKARADVGSIGGTMSEHFQLPVDIGEDRLVVCPSCHFS
 NTEILDLSQKICPDCQGPLTETKGEVGHFTYLSKYSSIFNALFTNAHGESLLAEMGCYGLGVTRILAA
 AIEVLSTEDCIRWPRLAPYQVCVIPPKKGSKETAATEIVEKLYDDIMEAVPQLRGEVLLDDRTHLTIGN
 RLKDKANKLGYPFVIIAGKRALEDPAHFVWSQNTGEVVFLTKEGVMELLTGVHV

TRTRPLE - GFP Tag - V

Restriction Sites:

Sgfl-Mlul

Cloning Scheme:



ACCN: NM_172272

ORF Size: 1425 bp

OTI Disclaimer: The molecular sequence of this clone aligns with the gene accession number as a point of reference only. However, individual transcript sequences of the same gene can differ through naturally occurring variations (e.g. polymorphisms), each with its own valid existence. This clone is substantially in agreement with the reference, but a complete review of all prevailing variants is recommended prior to use. [More info](#)

OTI Annotation: This clone was engineered to express the complete ORF with an expression tag. Expression varies depending on the nature of the gene.

Components: The ORF clone is ion-exchange column purified and shipped in a 2D barcoded Matrix tube containing 10ug of transfection-ready, dried plasmid DNA (reconstitute with 100 ul of water).

Reconstitution Method:

1. Centrifuge at 5,000xg for 5min.
2. Carefully open the tube and add 100ul of sterile water to dissolve the DNA.
3. Close the tube and incubate for 10 minutes at room temperature.
4. Briefly vortex the tube and then do a quick spin (less than 5000xg) to concentrate the liquid at the bottom.
5. Store the suspended plasmid at -20°C. The DNA is stable for at least one year from date of shipping when stored at -20°C.

RefSeq: [NM_172272.2](#), [NP_758476.2](#)

RefSeq Size: 2228 bp

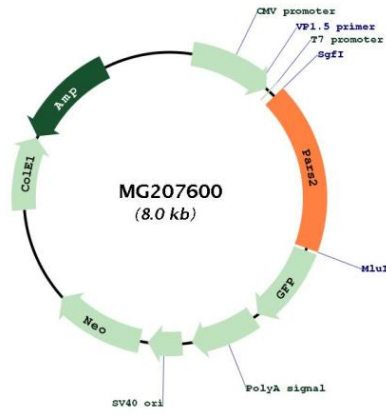
RefSeq ORF: 1428 bp

Locus ID: 230577

UniProt ID: [Q8CFI5](#)

Cytogenetics: 4 C7

Product images:



Circular map for MG207600