

## Product datasheet for **MG207553**

### **Dnpep (NM\_016878) Mouse Tagged ORF Clone**

#### **Product data:**

Product Type:	Expression Plasmids
Product Name:	Dnpep (NM_016878) Mouse Tagged ORF Clone
Tag:	TurboGFP
Symbol:	Dnpep
Synonyms:	AA407814
Mammalian Cell Selection:	Neomycin
Vector:	pCMV6-AC-GFP (PS100010)
E. coli Selection:	Ampicillin (100 ug/mL)



[View online »](#)

**ORF Nucleotide Sequence:**

>MG207553 representing NM\_016878  
 Red=Cloning site Blue=ORF Green=Tags(s)

TTTTGTAATACGACTCACTATAGGGCGGCCGGAATTCGTCGACTGGATCCGGTACCGAGGAGATCTGCC  
 GCC**GCGATCGCC**

ATGGCTATGAACGGCAGGGCTCGGAAAGAGCCATCCAGGCCACAGCCCAGAGCTCCTGAAGTTCGTGA  
 ACCGGAGTCCCTCTCCTTCCACGTCGTGGCTGAGTGCCGAGCCGCCTCCTCCAGGCTGGCTTCGGTGA  
 ACTCAAGGAAACAGAGGGCTGGGATATCGTACCAGAAAACAAGTACTTCTTAACCAGAACTCCTCCTCC  
 ATCATTGCTTTTGTGTGGGGGGCCAGTATGTTCTGGCAATGGCTTCAGCCTCATTGGGGCCACACGG  
 ACAGTCCCTGTCTCAGGGTGAACGCAAAATCGCGCCAAGCCAGGTGGGCTACCACCAGGTGGTGTGA  
 GACCTACGGCGGTGGGATCTGGAGCACATGTTTCGACCGGGACCTGACCTTGGCTGGACGCGTCATTATC  
 AAGTGCCTACCTCAGGCCGGCTGGAGCAGAGGCTCGTCCATATAGAACGGCCCCTCCTGCGCATCCCAC  
 ATCTGGCCATCCATCTGCAGCGAAATATCAATGAGAACTTTGGGCCAACACAGAGATCCACCTAGTCCC  
 TATTCTTGCCACAGCAGTTCAGGAAGAGCTGGAGAAAGGGACTCCTGAACCAGGGCTCTCGGTGCCACT  
 GATGAGCGGCACCACTCGGTCTCATGTCCCTGCTCTGTACCCATCTGGGCTGAGTCTGACAGCATCA  
 TGGAGATGGAGCTCTGCCTGGCAGACACCCAGCCTGCAGTCTGGTGGAGCCTATGAAGAGTTCATCTT  
 CGCTCCTCGACTGGACAATCTGCACAGCTGCTTCTGTGCCCTGCAGGCATTGATTGATTCCTGTGCATCC  
 CCTGCCTCTTGCCAGGGATCCACATGTGCGCATGGTACACTCTACGACAATGAAGAGGTGGGGTCAG  
 AGAGTGCACAAGGAGCACAGTCCCTGCTGACGGAGCTGATACTACGGCGCATCTCAGCCTCACCTCAGCG  
 TCTGACTGCCTTCGAGGAAGCCATACCTAAGTCCTTATGATCAGTGCAGACATGGCCATGCTGTGCAC  
 CAAACTACTCGGACAAGCATGAAGAAAACCACCGCCTTTGTTCCATAAGGGTCTGTGATCAAGGTGA  
 ACAGCAAGCAGCGCTACGCCTCTAATGCAGTGTCTGAGTCCATGATTGAGAGGTGGCTGGCCAAGTTGG  
 GGTGCCCTGCAGGACCTCATGGTCAGGAATGACTCCCGGTGTGGTACCACCATGGACCTATCTTGCT  
 TCTCGACTGGGGCTTCGGGTGCTGGACTTAGGCAGCCCCCAACTGGCTATGCACTCTATCCGGGAGACAG  
 CCTGTACCACTGGAGTTCTCCAGACCCTCACCTTTTCAAGGGCTTCTTTGAGCTGTTCCCTTCTGTAAG  
 CCGGAACCTCTTAGTGGAC

AG**CGGACCG**ACGCGTACGCGGCCGCTCGAG - GFP Tag - GTTTAA

**Protein Sequence:**

>MG207553 representing NM\_016878  
 Red=Cloning site Green=Tags(s)

MAMNGRARKEAIQATARELLKFVNRSPSPFHVVAECSRLLQAGFRELKETEGWDIVPENKYFLTRNSS  
 IIAFVGGQYVPGNGFSLIGAHTDSPCLRVRKRSRRSQVYHQVGVETYGGGIWSWTFDRDLTLAGRVII  
 KCPTSGRLEQRLVHIERPILRIPHLAIHLQRNINENFGPNTEIHLVPILATAVQEELEKGTPEPGLGAT  
 DERHHSVLMSSLCTHLGLSPDSIMEMELCLADTQPAVLGGAYEEFIFAPRLDNLHSCFCALQALIDSCAS  
 PASLARDPHVRMVTLYDNEEVGSESAQGAQSLLTELILRRI SASPQRLTAFEEAIPKSFMISADMAHAVH  
 PNYSDKHEENHRPLFHKGPIKVNKQRYASNAVSESMIREVAGQVGVPLQDLMVRNDSPCGTTIGPILA  
 SRLGLRVLDLGSPLAMHSIRETACTTGVLTQTLTFKGFELFSPVSRNLLVD

SGP**TRRRLE** - GFP Tag - V

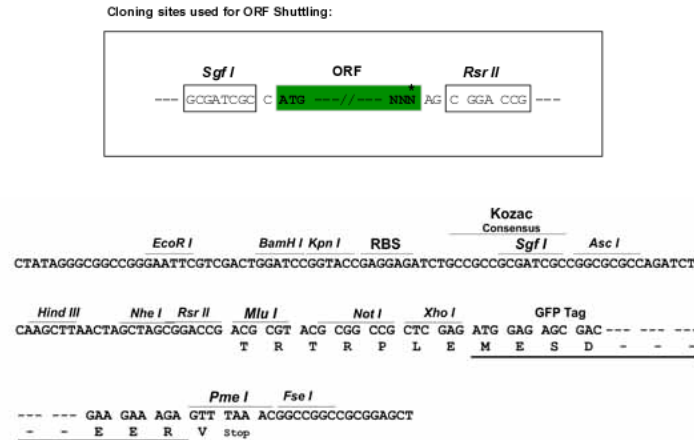
**Chromatograms:**

[https://cdn.origene.com/chromatograms/ja2727\\_g07.zip](https://cdn.origene.com/chromatograms/ja2727_g07.zip)

**Restriction Sites:**

Sgfl-RsrII

**Cloning Scheme:**



**ACCN:** NM\_016878

**ORF Size:** 1419 bp

**OTI Disclaimer:** Due to the inherent nature of this plasmid, standard methods to replicate additional amounts of DNA in E. coli are highly likely to result in mutations and/or rearrangements. Therefore, OriGene does not guarantee the capability to replicate this plasmid DNA. Additional amounts of DNA can be purchased from OriGene with batch-specific, full-sequence verification at a reduced cost. Please contact our customer care team at [custsupport@origene.com](mailto:custsupport@origene.com) or by calling 301.340.3188 option 3 for pricing and delivery.

The molecular sequence of this clone aligns with the gene accession number as a point of reference only. However, individual transcript sequences of the same gene can differ through naturally occurring variations (e.g. polymorphisms), each with its own valid existence. This clone is substantially in agreement with the reference, but a complete review of all prevailing variants is recommended prior to use. [More info](#)

**OTI Annotation:** This clone was engineered to express the complete ORF with an expression tag. Expression varies depending on the nature of the gene.

**Components:** The ORF clone is ion-exchange column purified and shipped in a 2D barcoded Matrix tube containing 10ug of transfection-ready, dried plasmid DNA (reconstitute with 100 ul of water).

- Reconstitution Method:**
1. Centrifuge at 5,000xg for 5min.
  2. Carefully open the tube and add 100ul of sterile water to dissolve the DNA.
  3. Close the tube and incubate for 10 minutes at room temperature.
  4. Briefly vortex the tube and then do a quick spin (less than 5000xg) to concentrate the liquid at the bottom.
  5. Store the suspended plasmid at -20°C. The DNA is stable for at least one year from date of shipping when stored at -20°C.

RefSeq: [NM\\_016878.4](#), [NP\\_058574.3](#)

RefSeq Size: 1754 bp

RefSeq ORF: 1422 bp

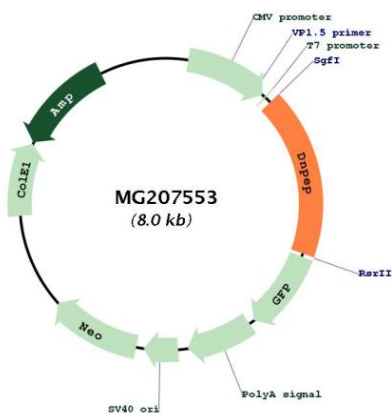
Locus ID: 13437

UniProt ID: [Q9Z2W0](#)

Cytogenetics: 1 C4

Gene Summary: Aminopeptidase with specificity towards an acidic amino acid at the N-terminus. Likely to play an important role in intracellular protein and peptide metabolism (By similarity).  
[UniProtKB/Swiss-Prot Function]

**Product images:**



Circular map for MG207553