

Product datasheet for **MG207509**

Ighg1 (BC024405) Mouse Tagged ORF Clone

Product data:

Product Type:	Expression Plasmids
Product Name:	Ighg1 (BC024405) Mouse Tagged ORF Clone
Tag:	TurboGFP
Symbol:	Ighg1
Synonyms:	IgG1, VH7183
Mammalian Cell Selection:	Neomycin
Vector:	pCMV6-AC-GFP (PS100010)
E. coli Selection:	Ampicillin (100 ug/mL)



[View online »](#)

ORF Nucleotide Sequence:

>MG207509 representing BC024405
 Red=Cloning site Blue=ORF Green=Tags(s)

TTTTGTAATACGACTCACTATAGGGCGGCCGGGAATTCGTCGACTGGATCCGGTACCGAGGAGATCTGCC
 GCC**GCGATCGCC**

ATGAAGTTGTGGCTGAACTGGATTTTCCTTGTAACACTTTTAAATGGTATCCAGTGTGAGGTGAATCTGG
 TGGAGTCTGGAGGAGCTTGGTACAGCCTGGGGTTCTCTGCGTCTCTCCTGTGCAGCTTCTGGATTAC
 CTTTACTGATTACTACATGAGCTGGGTCCGCCAGCCTCCAGGGAAGCACTTGAGTGGTTGGTTTTATT
 AGAAACAAAGCTAATGGTTACACAACAGAGTACAGTGCATCTGTGAAGGGTCGGTTCACCATCTCCAGAG
 ATAATTCCAAAGCATCCTCTATCTTCAAATGAATGCCCTGAGAGCTGAGGACAGTGCCACTTATTACTG
 TGCAAGAGATAGGAGGAGTTCTTATTACTACAGTGGTACCTCCTTTGCTTACTGGGGCCAAGGGACTCTG
 GTCAGTGTCTCTGCAGCCAAAACGACACCCCATCTGTCTATCCACTGGCCCTGGATCTGCTGCCAAA
 CTAAGTCCATGGTGACCCTGGGATGCCTGGTCAAGGGCTATTTCCCTGAGCCAGTGACAGTGACCTGGAA
 CTCTGGATCCCTGTCCAGCGGTGTGCACACCTTCCAGCTGTCTGCAGTCTGACCTCTACACTCTGAGC
 AGCTCAGTGAAGTGTCCCTCCAGCACCTGGCCAGCCAGCCGTCACCTGCAACGTTGCCACCCGGCCA
 GCAGCACCAAGGTGGACAAGAAAATTGTGCCAGGGATTGTGGTTGTAAGCCTTGATATGTACAGTCCC
 AGAAGTATCATCTGTCTTTCATCTTCCCCCAAAGCCCAAGGATGTGCTCACCATTACTCTGACTCCTAAG
 GTCACGTGTGTTGGTGTAGACATCAGCAAGGATGATCCCAGGTCAGTTCAGCTGGTTTGTAGATGATG
 TGGAGGTGCACACAGCTCAGACAAAACCCGGGAGGAGCAGTTCAACAGCACTTCCGTTTCACTCAGTGA
 ACTTCCCATCATGCACCAGGACTGGCTCAATGGCAAGGAGTCAAATGCAGGGTCAACAGTGCAGCTTTC
 CCTGCCCCATCGAGAAAACCATCTCCAAAACCAAGGCAGCCGAGGCTCCACAGGTGTACACCATTC
 CACCTCCCAAGGAGCAGATGGCCAAGGATAAAGTCAGTCTGACCTGCATGATAACAGACTCTTCCCTGA
 AGACATTACTGTGGAGTGGCAGTGGAAATGGGCAGCCAGCCGAGAACTACAAGAACAACACTCAGCCCATCATG
 GACACAGATGGCTTACTTCTGCTACAGCAAGCTCAATGTGCAGAAGAGCAACTGGGAGGCAGGAAATA
 CTTTACCTGCTCTGTGTACATGAGGGCTGCACAACCACCATACTGAGAAGAGCCTCTCCCACTCTCC
 TGGTAAA

ACGCGTACGCGGCCGCTCGAG - GFP Tag - GTTTAA

Protein Sequence:

>MG207509 representing BC024405
 Red=Cloning site Green=Tags(s)

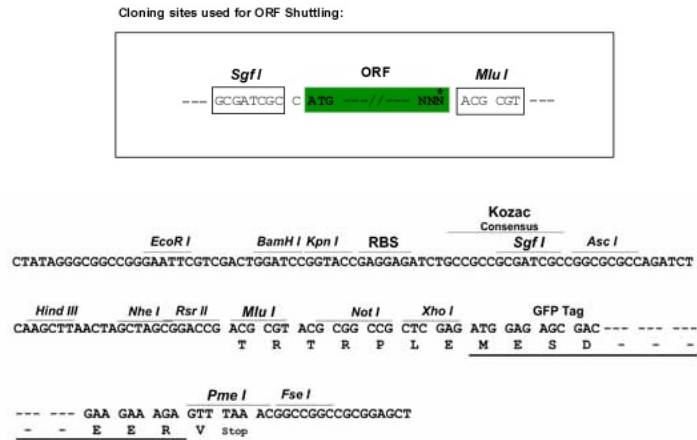
MKLWLNWIFLVTLNLIQCEVNLVESGGGLVQPGGSLRLSCAASGFTFTDYMSWVRQPPGKALEWLGFI
 RNKANGYTTEYSASVKGRFTISRDNQSILYLQMNALRAEDSATYYCARDRRSSYYSGTSFAYWQGTL
 VTVSAAKTTPPSVYPLAPGSAAQTNSMVTLGCLVKGYFPEPVTVWNSGSLSSGVHFFPAVLQSDLYTLS
 SSVTVPSSTWPSQTVTCNVHPASSTKVDKIVPRDCGCKPCICTVPEVSSVFIFFPKPKDVLITITLTPK
 VTCVVVDISKDDPEVQFSWFVDDVEVHTAQTQKPREEQFNSTFRSVSELPIMHQDWLNGKEFKCRVNSAAF
 PAPIEKTIKTKGRPKAPQVYTIPPPKEQMAKDKVSLTCMITDFFPEDITVEWQWNGQPAENYKNTQPIM
 DTDGSYFVYSKLNQKSNWEAGNTFTCSVLHEGLHNHTEKSLSHSPGK

TRTRPLE - GFP Tag - V

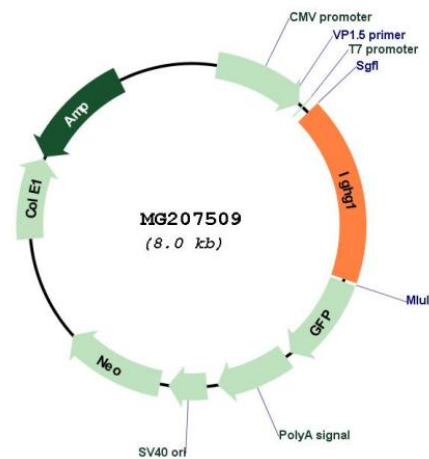
Restriction Sites:

Sgfl-Mlul

Cloning Scheme:



Plasmid Map:



ACCN: BC024405

ORF Size: 1409 bp

OTI Disclaimer: The molecular sequence of this clone aligns with the gene accession number as a point of reference only. However, individual transcript sequences of the same gene can differ through naturally occurring variations (e.g. polymorphisms), each with its own valid existence. This clone is substantially in agreement with the reference, but a complete review of all prevailing variants is recommended prior to use. [More info](#)

OTI Annotation: This clone was engineered to express the complete ORF with an expression tag. Expression varies depending on the nature of the gene.

Components: The ORF clone is ion-exchange column purified and shipped in a 2D barcoded Matrix tube containing 10ug of transfection-ready, dried plasmid DNA (reconstitute with 100 ul of water).

Reconstitution Method:

1. Centrifuge at 5,000xg for 5min.
2. Carefully open the tube and add 100ul of sterile water to dissolve the DNA.
3. Close the tube and incubate for 10 minutes at room temperature.
4. Briefly vortex the tube and then do a quick spin (less than 5000xg) to concentrate the liquid at the bottom.
5. Store the suspended plasmid at -20°C. The DNA is stable for at least one year from date of shipping when stored at -20°C.

RefSeq: [BC024405](#)

RefSeq Size: 1643 bp

RefSeq ORF: 1409 bp

Locus ID: 16017

Cytogenetics: 12 62.1 cM