

## Product datasheet for **MG207506**

### **Ndufv3 (NM\_030087) Mouse Tagged ORF Clone**

#### **Product data:**

Product Type:	Expression Plasmids
Product Name:	Ndufv3 (NM_030087) Mouse Tagged ORF Clone
Tag:	TurboGFP
Symbol:	Ndufv3
Synonyms:	1500032D16Rik
Mammalian Cell Selection:	Neomycin
Vector:	pCMV6-AC-GFP (PS100010)
E. coli Selection:	Ampicillin (100 ug/mL)



[View online »](#)

**ORF Nucleotide Sequence:**

>MG207506 representing NM\_030087  
 Red=Cloning site Blue=ORF Green=Tags(s)

TTTTGTAATACGACTCACTATAGGGCGGCCGGAATTCGTCGACTGGATCCGGTACCGAGGAGATCTGCC  
 GCC**GCGATCGCC**

ATGGCGGTCTCTCTCTCTCTCGGGGAGGACGGATCCGGGCGCTGAAGGCTGTGCTCCTGGAGGCAAGGG  
 TGTTCCCGGAGAACTGGTTTCTGTAGTAGGCTGTCTACAGAGTCAGAGAAGAGTGCAAAGGAGAAAGA  
 GCTACATCCCAAGACACAAAGTGTGCTCAAAGATGTGGGAGCAGAGGAGAGGGGCAAGCTCCTAACC  
 CACACAGCAGCGCACTGTCCAAAACTCACCTCCACCCAGTTCTTACCCATCAGTGGAGAACACAGGTG  
 GGGCTGTGGCAGGCCCGCACCTGGCGGCAGCCTGCTGCCACAGATGAAGGGCTTCCGAAGCATTGTG  
 AAGAAAGACTTTGGTAGCGTTTCTCAGAAAGTTATGCCTCCACCCCAAGCACGGGGTTCTGACTCAAAG  
 GCTCAGGGGCACGTGCAGAAAGTACAAACGATTCATCTTCATCTTCTCATCCAGCTCCTCAGATTCAG  
 ACTCTGATGGGGAGAACATGACTCAGACCGTGTCCCCCGAGTGGCAAGCAAAGGCAAGGCAGGGTC  
 TTCAAACCGGAGGCCTCCGGCCCTTGACGACTGGAGCCCTAAAATCACAGTTTCTGCAAAGAGAAG  
 GCCAAGGTCCAAAAGCCACCCACAGATGTACCTACCCAGAGAAGACCCTGCAGCCTAAGAAGAAATGGA  
 CCAAGCCTGTAGAAGACAGCAAAGAAGCCAGGTCCAAGCCGTGACATCCAGGCCACAGTCCAGTGAGAT  
 GTTGGAGCAAACGTGAAGGAAGAACCAACGGGGAAACCGAGACCAGACAAGACAGGAAAGGAAAGC  
 GCAAAGCCATGTGAAGCTGAAGTAATCTTACCCAGCCACGGGAAAGTCAGAGTACCCACACAGCCCTA  
 GTGGGCCAGTGCCCAACGCAAATAACAAGAGGCCAGTGCAGAACATCCGCCAGCCGTTGCCCCAGGAA  
 GGGAGCTAGATATCCGGAACCAAAGTCCAGAGCCCGGATGGAAGACCTTTCTCCCCTGGTCAGAAAA  
 GAAAGCGCAGAGAAGCAGGTGCCAGAAGGAGGCTCCAGGTCCAGGAGGTCTTGAAGATCAGAAACCAG  
 TGAGCTATTCGAAGACACTTCTGTTCAGGAGAAAGATACTGTTGAAGAGAGTCCCGGACCACATCTGGA  
 GGGGAGGTTCCAGGTGGCAGTCGAAGCCCGCCACTGATGCAGTCTACCCAGGAAGCCCGGCCGAC  
 ACACAGGAGCCCGAGCCGACTGACACCACCTACAAGAACCTGCAGCACCATGACTACACACATACA  
 CCTTCTGGACCTGAACCTGGACCTCTCAAATTCAGGCTGCCACAGCCGCTTTCAGGACGAGAGTCACC  
 TCGGCAC

**ACGCGTACGCGGCCGCTCGAG** - GFP Tag - GTTTAA

**Protein Sequence:**

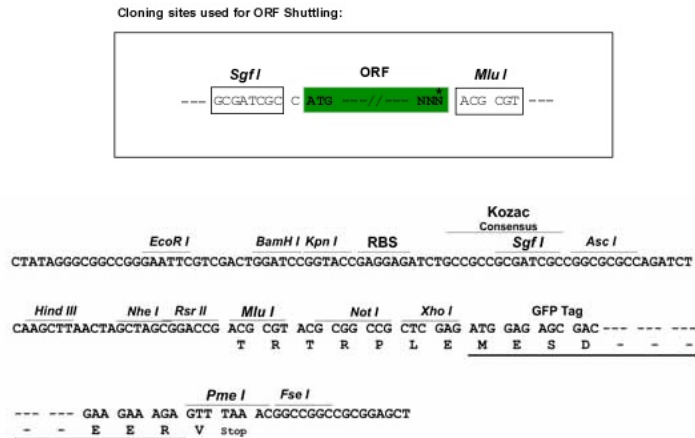
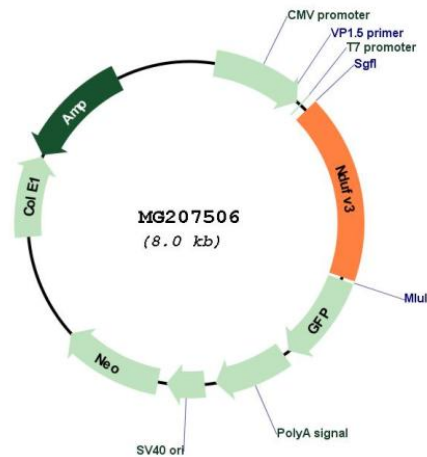
>MG207506 representing NM\_030087  
 Red=Cloning site Green=Tags(s)

MAVSLLLRGGIRALKAVLLEARVFPGELVSVVRLSTESEKSAKEKELHPKTQSVLKDVGAEEERKLLTA  
 HTAAALSKNSPPSSYPSVENTGGAVAGPHPGSLLPTDEGLPKHL SRKTLVAFQKVMPPPPQARGSDSK  
 AQGHVQKVTNDSSSSSSSSSDSDSDGEEHSDRAPPRVASKGKAGSSKPEASRPLTTGAPKITVSAKEK  
 AKVQKPPTDVTYPEKTLQPKKKWTKPVEDSKEARSKPVTSRPQSSEMLEQNKKEEHQRGKPRPKTGKES  
 AKPCEAEVILPSHGKVRVPTQPTSGPVTTQIQEASAEHPPAVAPRKGARYPEPKVPEPGWKTSSPLVRK  
 ESAEKQVPEGGSQVQEVLEDQKPVSYKTLPVQEKDVEESAGPHLEGRFQVAVEAPPTDAVLPQEAPAD  
 TQEPEDTDTTYKNLQHHDYNTYTFDLNLDLSKFRLPQPSSGRESRPH

**TRTRPLE** - GFP Tag - V

**Restriction Sites:**

Sgfl-MluI

**Cloning Scheme:**

**Plasmid Map:**


**ACCN:** NM\_030087

**ORF Size:** 1407 bp

**OTI Disclaimer:** The molecular sequence of this clone aligns with the gene accession number as a point of reference only. However, individual transcript sequences of the same gene can differ through naturally occurring variations (e.g. polymorphisms), each with its own valid existence. This clone is substantially in agreement with the reference, but a complete review of all prevailing variants is recommended prior to use. [More info](#)

**OTI Annotation:** This clone was engineered to express the complete ORF with an expression tag. Expression varies depending on the nature of the gene.

**Components:** The ORF clone is ion-exchange column purified and shipped in a 2D barcoded Matrix tube containing 10ug of transfection-ready, dried plasmid DNA (reconstitute with 100 ul of water).

**Reconstitution Method:**

1. Centrifuge at 5,000xg for 5min.
2. Carefully open the tube and add 100ul of sterile water to dissolve the DNA.
3. Close the tube and incubate for 10 minutes at room temperature.
4. Briefly vortex the tube and then do a quick spin (less than 5000xg) to concentrate the liquid at the bottom.
5. Store the suspended plasmid at -20°C. The DNA is stable for at least one year from date of shipping when stored at -20°C.

**RefSeq:** [NM\\_030087.1](#), [NP\\_084363.1](#)

**RefSeq Size:** 1587 bp

**RefSeq ORF:** 1407 bp

**Locus ID:** 78330

**Cytogenetics:** 17 B1

**Gene Summary:** Accessory subunit of the mitochondrial membrane respiratory chain NADH dehydrogenase (Complex I), that is believed not to be involved in catalysis. Complex I functions in the transfer of electrons from NADH to the respiratory chain. The immediate electron acceptor for the enzyme is believed to be ubiquinone. May be the terminally assembled subunit of Complex I. [UniProtKB/Swiss-Prot Function]