

Product datasheet for **MG207467**

Mtmr7 (BC032254) Mouse Tagged ORF Clone

Product data:

Product Type:	Expression Plasmids
Product Name:	Mtmr7 (BC032254) Mouse Tagged ORF Clone
Tag:	TurboGFP
Symbol:	Mtmr7
Mammalian Cell Selection:	Neomycin
Vector:	pCMV6-AC-GFP (PS100010)
E. coli Selection:	Ampicillin (100 ug/mL)



[View online »](#)

ORF Nucleotide Sequence:

>MG207467 representing BC032254
 Red=Cloning site Blue=ORF Green=Tags(s)

TTTTGTAATACGACTCACTATAGGGCGGCCGGAATTCGTCGACTGGATCCGGTACCGAGGAGATCTGCC
 GCC**CGGATCGCC**

ATGGAGCACATCCGCACGCCAAGTTGAAAACGTGCGCTTGGTAGACAGAGTGTCTTGTAAAAAGGCAG
 CGCTGGGAACTTTGTATCTGACGGCCACTCACGTCAATTCGTTGGAAAATGCACCTGACACAAGAAAAGA
 AACCTGGATTCTGCACAGTCAGATCTCCACCATTGAAAAGCAGGCGACAACAGCTACGGGCTGCCCTCTG
 CTTATTCGCTGCAAGAACTTCCAGATCGTACAACCTTGTCAATCCACAGGAGAGAGACTGCCACGACGTGT
 ACATCTCTCTGATACGCCTTGCACGGCCAGTGAAGTACGAGGAGCTATACTGCTTTTCTTCAACCCCAA
 GCTGGATAAGGAAGAACGGGAGCAGGGCTGTTGCTGTTGACCTTAGTGAAGAATAACAAGCAATGGGC
 CTCCTGATAATTATTGGCAGCTCAGCGATGTGAATAGAGACTACAGAGTTTGTGACTCTTACCCACGG
 AACTGTACGTCCCAGATCGGCCACGGCACACATCATCGTGGCAGCTCCAAGTTCGGAGCAGACGGCG
 ATTTCTGCCCTTCTACTACTGTAAAGACAGCCATGCCTCCATCTGCAGGAGCAGCCAGCCCTTTCC
 GGCTTCAGCGCTCGGTGCCTGGAGGATGAGCAGATGCTCCAAGCCATCAGGAAAGCCAATCCTGGAAGTG
 ACTTCATTTATGTCGTGGACACAAGGCCTAAACTTAATGCGATGGCAAATCGTGTGCAGGGAAAGGCTA
 TGAGAATGAAGACAATTATTCGAATATCAAGTTTCACTTATCGGCATAGAGAACATCCACGTATGAGG
 AACAGTCTTCAGAAAATGCTGGAAGTGTGTGAACCTAAATCTCCCTCTATGAGTGATTTCTGTGGGGAC
 TGGAGAACTCAGGCTGGCTGAGGCACATCAAAGCCATCATGGATGCAGGGATCTTCATTGCAAAGGCAGT
 TTCAGAGGAAGGGCAAGTGTGCTTGTCTACTGTTCTGACGGCTGGGACAGAACGGCCAGGTGTGCTCG
 GTGGCTAGCCTGCTGCTGACCCTTACTACCGGACTCTGAAAGGATTCATGGTATTAATTGAAAAGGACT
 GATTTCTTCGGACATAAATTTAATCATAGATATGGCAACTTAGATGGTGACCCAAAAGAAATCTCTCC
 AGTAATCGACCAGTTTATTGAGTGTCTGCGCAGCTAACGGAACAGTTCCTTGGCCTTTGAGTTCAAC
 GAGAGTTTCTGACTCACATTCAGCATCATGTTTATTCTGCCAGTTTGGGAACTTCTGTGTAATAGCC
 AGAAGGAGAGGCGAGAATCAATGAGAATGAAAAAGCAAAAAGGGTTACGGTTCCTTAAGGAGGACTC
 C

ACGCGTACGCGGCCGCTCGAG – GFP Tag – GTTTAA

Protein Sequence:

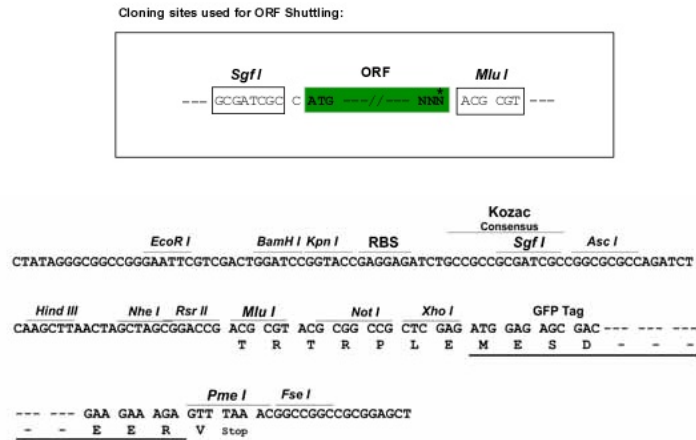
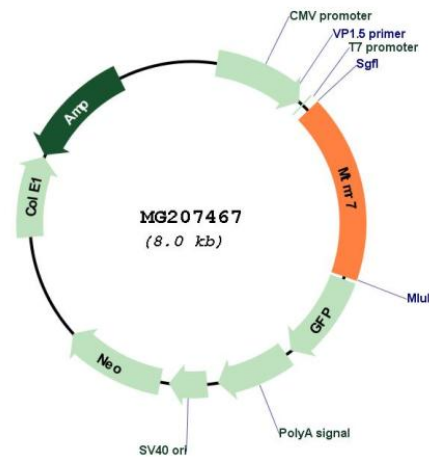
>MG207467 representing BC032254
 Red=Cloning site Green=Tags(s)

MEHIRTPKVENVRLVDRVSKKAALGTLYL TATHVIFVENAPDTRKETWILHSQISTIEKQATTATGCPL
 LIRCKNFQIVQLVIPQERDCHDYISLIRLARPVKYEELYCF SFNPKLDKEEREQWLLVDLSEYKRMG
 LPDNYWQLSDVNRDYRVCD SYTELYVPRSAHAHIVGSSKFRSRRFPALSYCKDASHICRSSQPLS
 GFSARCLEDEQMLQAIRKANPGSDFIYVVDTRPKLNAMANRAAGKGYENEDNYSNIKFFQFIGIENIHVMR
 NSLQKMLEVCELKSPMSDFLWGLENSGWLRIKAIMDAGIFIAKAVSEEGASVLVHCSDGWDRTAQVCS
 VASLLLDPPYRRLKGFVLIIEKDWISFGHKFNHRYGNLDGDPKEISPVIDQFIECVWQLTEQFPCAFEFN
 ERFLTHIQHHVYSCQFGNFLCNSQKERRELNENKSKKGRFLKEDS

TRTRPLE – GFP Tag – V

Restriction Sites:

Sgfl-MluI

Cloning Scheme:

Plasmid Map:


ACCN: BC032254

ORF Size: 1403 bp

OTI Disclaimer: The molecular sequence of this clone aligns with the gene accession number as a point of reference only. However, individual transcript sequences of the same gene can differ through naturally occurring variations (e.g. polymorphisms), each with its own valid existence. This clone is substantially in agreement with the reference, but a complete review of all prevailing variants is recommended prior to use. [More info](#)

OTI Annotation: This clone was engineered to express the complete ORF with an expression tag. Expression varies depending on the nature of the gene.

Components: The ORF clone is ion-exchange column purified and shipped in a 2D barcoded Matrix tube containing 10ug of transfection-ready, dried plasmid DNA (reconstitute with 100 ul of water).

Reconstitution Method:

1. Centrifuge at 5,000xg for 5min.
2. Carefully open the tube and add 100ul of sterile water to dissolve the DNA.
3. Close the tube and incubate for 10 minutes at room temperature.
4. Briefly vortex the tube and then do a quick spin (less than 5000xg) to concentrate the liquid at the bottom.
5. Store the suspended plasmid at -20°C. The DNA is stable for at least one year from date of shipping when stored at -20°C.

RefSeq: [BC032254](#), [AAH32254](#)

RefSeq Size: 2817 bp

RefSeq ORF: 1403 bp

Locus ID: 54384

Cytogenetics: 8 A4

Gene Summary: Phosphatase that specifically dephosphorylates phosphatidylinositol 3-phosphate (PtdIns(3)P) and inositol 1,3-bisphosphate (Ins(1,3)P2).[UniProtKB/Swiss-Prot Function]