

Product datasheet for **MG207437**

Sfmbt1 (BC066188) Mouse Tagged ORF Clone

Product data:

Product Type:	Expression Plasmids
Product Name:	Sfmbt1 (BC066188) Mouse Tagged ORF Clone
Tag:	TurboGFP
Symbol:	Sfmbt1
Synonyms:	Sfmbt, Smr
Mammalian Cell Selection:	Neomycin
Vector:	pCMV6-AC-GFP (PS100010)
E. coli Selection:	Ampicillin (100 ug/mL)



[View online »](#)

ORF Nucleotide Sequence:

>MG207437 representing BC066188
 Red=Cloning site Blue=ORF Green=Tags(s)

TTTTGTAATACGACTCACTATAGGGCGGCCGGAATTCGTCGACTGGATCCGGTACCGAGGAGATCTGCC
 GCC**CGCATCGCC**

ATGAGCGGGGAGCAGCAGCTTGATGCAGATCTGGGTCTGGTGTAGAAGTAGAAGAATTCAGCTGGGAAG
 ATTATCTAGAAGAGACAGGCTCCACCACAGTCCCTACGCATCGTTTAAACATGTGGATATACGTTTGCA
 AAATGGATTTGCTCCTGGGATGAAGCTGGAGGTAGCTCTGAAAAATGACCCTGAGACTTATTGGGTGCC
 ACCATCATCACCGCCTGTGAGCAGTTGCTCCTGCTTCGTTATGAAGGCTATGGGAAGACCGAAAAGCAG
 ACTTCTGGTGTGACATCAGGAAAGCTGGCCTTACCCATTGGGTGGTGTGAGCAGAACAAGAAGACCTT
 CGAAGCTCCAGAAGGCATCAGAGATAAAGTGTCTGATTGGAATGCATTCTACAGCAGACCCTGATAGGA
 GCCTGTGGTCTCCCGTGTCTGCTAGAGGGCCTCCGTAATGGAAGGAATCCTTTAGATCTCATTGCC
 CAGGGTCCAACTAGAATGCCAGGATTTTCGGGACTCTTAAAGCACTGGCTTGTACTGTTGTGGAGAA
 CATTGGGGGACGGTTGAAGCTGCGGTATGAAGGCCTTGAGAGCCGTGACGTTTTGAACACTGGTTGTAT
 TACTTAGATCCATTTCTCATCATTGGTTGGGCTGCTCAGCAAGGATGTGACCTTCAGCCCCATTAG
 CCATCAAACATCTGAAGAGTGAAGCTGACTGGCAAGAGATTTTGCCAAAGTGAAGAGGAAGAGCCATT
 ACCCTCTACTTATTTAAGGATAAGCAAGTTATTGGAACCCATGAATTTCTATAAACATGAAGTTGGAA
 GCTGTGGACCCGTGGTCTCCTTTGGGATTTCTCTGCAACGATTGCTAAGGTGTTTGTGATAAGTACT
 TTCTAGTGGAAATGGATGACCTTCGGCCAGAAGACCATAACAAGGCGATCATTGTGTGCCATGCTAACAG
 TCCTGGTATCTTCTGTGCAGTGGAGTCTAAGAATGGTTTACATATCAATCCTCCTCCAGGCTCCGG
 AGCCAGGACTTTGACTGGGCCGACTACCTCAAGCAGTGTGGGGCTGAAGCTGCTCCCAGAAGTGCCTCC
 CGCAGTCAATTTCTGAGCACCAGTTTAAAGGAGAACATGAAACTGGAGGCAGTGAACCTCTTTCCCTGA
 AGAAGTGTGCATTGCCACCGTTACTGCAGTGAAGGCTCGTACCTGTGGCTCCAGCTAGAAGGTTCTAAG
 AAGCCTGTACCCGAATTTATTGTAAGTGCAGAGTCGATGAATATATTTCTTTGGGCTGGTGTGAAACCA
 ATGGCCATCCTCTCAGTACTCCTCGCCGGGCACGAGGGCATAAACTGAGGAAAATCGCAGTGTT

ACGCGTACGCGGCCGCTCGAG - GFP Tag - GTTTAA

Protein Sequence:

>MG207437 representing BC066188
 Red=Cloning site Green=Tags(s)

MSGEQQLDADLGSVVEEFSWEDYLEETGSTTVPYASFKHVDIRLQNGFAPGMKLEVALKNDPETYWVA
 TIITACEQLLLLRYEGYGEDRKADFWCDIRKAGLYPIGWQCQNKKTLEAPEGIRDKVSVDWNAFLQQLIG
 ACGPPVSLLEGLRNGRNPLDLIAPGSKLECFRDSLSTWLVTVVENIGGRLKLRYEGLSRDGFHEHWLY
 YLDPFLHHIGWAAQQGCDLQPPLAIKHLKSEADWQEILAKVKEEELPSYLFKDKQVIGTHEFSINMKLE
 AVDPWSPFGISPATIAKVFDDKYFLVEMDDLRPEDHTRRSFVCHANSPIFPVQWSLKNGLHINPPPGFR
 SQDFDWADYLKQCGAEAAPQKCFPQSISEHQFKENMKLEAVNPLFPPEEVCIAVTAVRGSYLWLQLEGSK
 KPVPEFIVSAESMNIFFPLGWCETNGHPLSTPRRARGHKLKRIAVV

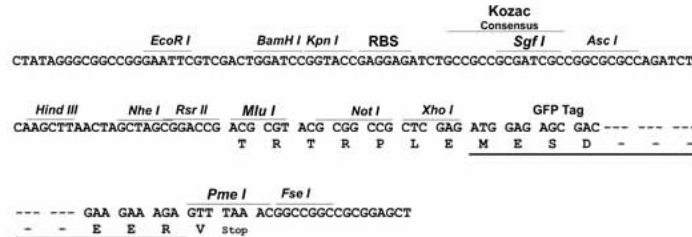
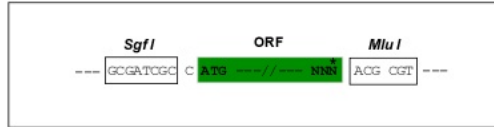
TRTRPLE - GFP Tag - V

Restriction Sites:

Sgfl-MluI

Cloning Scheme:

Cloning sites used for ORF Shutting:


ACCN: BC066188

ORF Size: 1397 bp

OTI Disclaimer: The molecular sequence of this clone aligns with the gene accession number as a point of reference only. However, individual transcript sequences of the same gene can differ through naturally occurring variations (e.g. polymorphisms), each with its own valid existence. This clone is substantially in agreement with the reference, but a complete review of all prevailing variants is recommended prior to use. [More info](#)

OTI Annotation: This clone was engineered to express the complete ORF with an expression tag. Expression varies depending on the nature of the gene.

Components: The ORF clone is ion-exchange column purified and shipped in a 2D barcoded Matrix tube containing 10ug of transfection-ready, dried plasmid DNA (reconstitute with 100 ul of water).

Reconstitution Method:

1. Centrifuge at 5,000xg for 5min.
2. Carefully open the tube and add 100ul of sterile water to dissolve the DNA.
3. Close the tube and incubate for 10 minutes at room temperature.
4. Briefly vortex the tube and then do a quick spin (less than 5000xg) to concentrate the liquid at the bottom.
5. Store the suspended plasmid at -20°C. The DNA is stable for at least one year from date of shipping when stored at -20°C.

RefSeq: [BC066188](#), [AAH66188](#)
RefSeq Size: 2111 bp

RefSeq ORF: 1397 bp

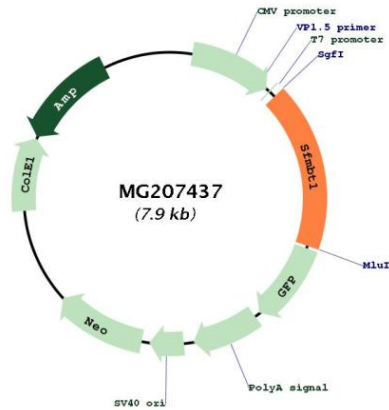
Locus ID: 54650

Cytogenetics: 14 18.99 cM

Gene Summary:

Histone-binding protein, which is part of various corepressor complexes. Mediates the recruitment of corepressor complexes to target genes, followed by chromatin compaction and repression of transcription. Plays a role during myogenesis: required for the maintenance of undifferentiated states of myogenic progenitor cells via interaction with MYOD1. Interaction with MYOD1 leads to the recruitment of associated corepressors and silencing of MYOD1 target genes. Part of the SLC complex in germ cells, where it may play a role during spermatogenesis.[UniProtKB/Swiss-Prot Function]

Product images:



Circular map for MG207437