

## Product datasheet for **MG207434**

### Cdc25c (NM\_009860) Mouse Tagged ORF Clone

#### Product data:

Product Type:	Expression Plasmids
Product Name:	Cdc25c (NM_009860) Mouse Tagged ORF Clone
Tag:	TurboGFP
Symbol:	Cdc25c
Synonyms:	Cdc25
Mammalian Cell Selection:	Neomycin
Vector:	pCMV6-AC-GFP (PS100010)
E. coli Selection:	Ampicillin (100 ug/mL)



[View online »](#)

**ORF Nucleotide Sequence:**

>MG207434 representing NM\_009860  
 Red=Cloning site Blue=ORF Green=Tags(s)

TTTTGTAATACGACTCACTATAGGGCGGCCGGAATTCGTCGACTGGATCCGGTACCGAGGAGATCTGCC  
 GCCGCGATCGCC

ATGTCTACAGGACCTATCCCACCTGCAAGTGAAGAGGGAAGTTTTGTTTCAGCACCCAGTTTATAGTCCA  
 AACAAAGGAAGATATTACACCTACTTTTGGAGAGAAACACTTCTTTTACCATCCGTTTCAGATTTCCCTGA  
 ATCTCCGAAAGACAAACTCCACGACTCGGCAAACCTAAGCATTCTGTGCGGAGGAACCCAAAATGTTGC  
 CTTGACCTTTTGAATCTTAGCAGTGGAGAGATGTCTGCCTCTCCGCTTACTACTTCTGCTGACCTTGAGG  
 ACAATGGTTCCTTGGATTCATCTGGACCTCTGGATAGACAGTTAACTGGCAAGGATTTTACCAGGACCT  
 TATGAAAGGTATCCAGTACAGCTTCTTTGTAGTACTCCGAATGCATGAATCATGGCCACAGAAAGAAG  
 ATTGCAAAGCGTAGCACATCTGCACATAAAGAAAATAAACACCAGTTTAAAGGCATTGGAATGGGAGG  
 CACCTAGGACCCCAAGGTTTCGAAAAATGCCTGGAGGTCCTCTGACTTCTCTCTGTGTGAGCTGGAAT  
 GAAGCATCTGGCAGTCCATTACTACGGTTCCTAAGCTGAGTCAAATGTAAGCTAGAAGACCAAGAA  
 AGGATTTCAGAAGACCAATGGAGTGTTCCCTGGGAGACCAGGACGCCAAGGGCTTAAGTCTAAGGAAGA  
 TGGTCCCCTCTGTGACATGAACGCCATTCAGATGGAGGAGGAAGAGTCTGGCTCAGAGCTTCTGATTGG  
 TGATTTCTCAAAGGTGTGTGTGCTGCCAACGGTCCAGGGAAACACCCGGATCTGAAGTATATCAGCCCA  
 GACACAGTGGCTGCTTTGCTGTCTGGAAAGTCCAGAGTGTGATCGAGAGGTTTTATCATTGATTGCC  
 GCTATCCGTATGAGTACCTGGGAGGCCACATCCTGGGAGCCTTAAACCTGCACAGTCAGAAGGAAGTCA  
 TGAGTTCTTTCTGAGGAAGCCTGTTGTTCTCTGGATATCCAGAAAAGAGTCATCATTGTGTTCTCTGT  
 GAATTCCTCTCCGAGAGAGGCCCTCGAATGTGCCGTTCTCTGAGAGAAAAGACAGGGCTCTGAACCAGT  
 ATCCGGCATTATATTACCCTGAGCTATATATCCTCAAAGGGGGCTACAGAGATTTCTTTCCAGAGTAT  
 GGAGCTGTGTGACCCACAGAGCTACTGTCCCATGCTTACCAGGACCACCAGGCTGAGCTGCTGAGCTGG  
 CGAAGCCAGAGCAAGGCCAGGAAGGGGAGCGGCAGCTGCAGGGACAGATTGCCCTCTGGTGAAGGGTG  
 CGAGCCCAAA

ACGCGTACGCGGCCGCTCGAG - GFP Tag - GTTTAA

**Protein Sequence:**

>MG207434 representing NM\_009860  
 Red=Cloning site Green=Tags(s)

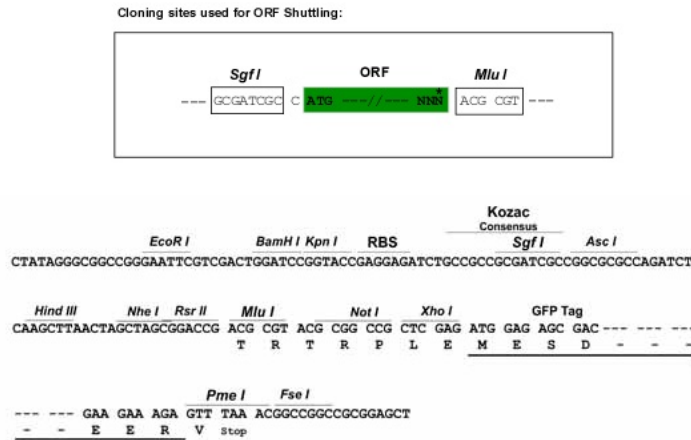
MSTGPIPPASEEGSFVSAPSFRSKQRKILHLLERNTSFTIRSDFPESPKDKLHDSANLSILSGGTPKCC  
 LDLSNLSSGEMSASPLTTSADLEDNGSLDSSGPLDRQLTGKDFHQDLMKGIQVQLLCSTPNAMNHGHRKK  
 IAKRSTSAHKENINTSLKALEWEAPRTPRFRKMPGGPLTSPLECEMKHLGSPITTVPKLSQNVKLEDQE  
 RISEDPMECSLGDQDAKGLSLRKMVPLCDMNAIQMEEEESGSELLIGDFSKVCLVPTVPGKHPDLKYISP  
 DTVAALLSGKQSVIERFYIIDCRYPYELGGHILGALNLHSQKELHEFFLRKPVVPLDIQKRVIIVFLC  
 EFSSERGRMCRSLREKDRALNQYPALYPYELKGGYRDFPEYMELCDPQSYCPMLHQDHAELLSSW  
 RSQSKAQEGERQLQGQIALLVKGASQ

TRTRPLE - GFP Tag - V

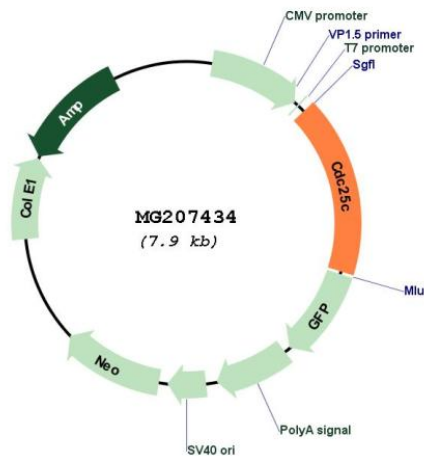
**Restriction Sites:**

SgfI-MluI

Cloning Scheme:



Plasmid Map:



ACCN: NM\_009860

ORF Size: 1341 bp

OTI Disclaimer: The molecular sequence of this clone aligns with the gene accession number as a point of reference only. However, individual transcript sequences of the same gene can differ through naturally occurring variations (e.g. polymorphisms), each with its own valid existence. This clone is substantially in agreement with the reference, but a complete review of all prevailing variants is recommended prior to use. [More info](#)

OTI Annotation: This clone was engineered to express the complete ORF with an expression tag. Expression varies depending on the nature of the gene.

<b>Components:</b>	The ORF clone is ion-exchange column purified and shipped in a 2D barcoded Matrix tube containing 10ug of transfection-ready, dried plasmid DNA (reconstitute with 100 ul of water).
<b>Reconstitution Method:</b>	<ol style="list-style-type: none"><li>1. Centrifuge at 5,000xg for 5min.</li><li>2. Carefully open the tube and add 100ul of sterile water to dissolve the DNA.</li><li>3. Close the tube and incubate for 10 minutes at room temperature.</li><li>4. Briefly vortex the tube and then do a quick spin (less than 5000xg) to concentrate the liquid at the bottom.</li><li>5. Store the suspended plasmid at -20°C. The DNA is stable for at least one year from date of shipping when stored at -20°C.</li></ol>
<b>RefSeq:</b>	<a href="#">NM_009860.3</a>
<b>RefSeq Size:</b>	1941 bp
<b>RefSeq ORF:</b>	1344 bp
<b>Locus ID:</b>	12532
<b>UniProt ID:</b>	<a href="#">P48967</a>
<b>Cytogenetics:</b>	18 18.71 cM
<b>Gene Summary:</b>	This gene encodes a dual specificity phosphatase that dephosphorylates cyclin B-bound Cdk1 to trigger entry into mitosis. [provided by RefSeq, Dec 2014]