

## Product datasheet for **MG207422**

### Stk38 (NM\_134115) Mouse Tagged ORF Clone

#### Product data:

Product Type:	Expression Plasmids
Product Name:	Stk38 (NM_134115) Mouse Tagged ORF Clone
Tag:	TurboGFP
Symbol:	Stk38
Synonyms:	5830476G13Rik; 9530097A09Rik; AA617404; Ndr1
Mammalian Cell Selection:	Neomycin
Vector:	pCMV6-AC-GFP (PS100010)
E. coli Selection:	Ampicillin (100 ug/mL)



[View online »](#)

**ORF Nucleotide Sequence:**

>MG207422 representing NM\_134115  
 Red=Cloning site Blue=ORF Green=Tags(s)

TTTTGTAATACGACTCACTATAGGGCGGCCGGAATTCGTCGACTGGATCCGGTACCGAGGAGATCTGCC  
 GCC**CGGATCGCC**

ATGGCAATGACAGGATCAACACCTTGCTCATCCATGAGTAATCATACGAAGGAGAGGGTGACAATGACCA  
 AAGTGACACTGGAGAATTTTATAGCAACCTTATCGCTCAACATGAAGAACGAGAAATGAGACAAAAGAA  
 GTTAGAAAAGGTGATGGAAGAAGAAGGCCGTGAAAGACGAAGAGAAACGACTCAGAAGATCCGCGCACGCT  
 CGGAAGGAAAACAGAGTTTCTTCGATTAAGAGAAACAAGGCTTGGACTGGAAGATTTTGTAGCTTTAAAG  
 TCATAGGCCGAGGAGCATTTGGTGAGGTGCGGCTTGTTCCAGAAGAAAGACACAGGGCATGTGTACGCAAT  
 GAAAATCTGCGCAAAGCAGACATGCTCGAGAAGGAGCAGGTTGGCCACATTCGTGCGGAGCGTGACATT  
 CTAGTGGAGGCAGACAGTTTGTGGGTTGTGAAATGTTCTATAGTTTTCCAGATAAGCTAAACCTCTACC  
 TAATCATGGAGTTCCTGCCTGGAGGGACATGATGACTTTATTGATGAAAAAAGATACTCTGACAGAAGA  
 GGAGACTCAGTTTTATATAGCAGAGACAGTATTAGCCATAGACTCCATTCACCAGCTGGGATTCATCCAC  
 AGAGATATCAAGCCAGACAACCTTCTCTGGACAGCAAGGGCCATGTGAAACTTTCCGACTTTGGCCTTT  
 GCACAGGCCTGAAAAAGCACACAGGACAGAATTTTATAGGAACCTGAACCACAGCCTGCCCAAGTGATT  
 CACTTTTCCAGAACATGAATTCAAAAGGAAAGCAGAGACCTGGAAAAAGAAACAGACGCCAGCTAGCCTTC  
 TCTACAGTGGGACTCCTGACTACATTGCTCCAGAGGTGTTTATGCAGACGGGTTACAACAAGCTCTGCG  
 ATTTGGTGGTCGCTCGGGTAATCATGTATGAGATGCTCATCGGCTACCCACCATTTCTGCTCCGAGACCCC  
 ACAAGAGACATAACAAGAAAGTATGAACTGGAAGGAACTTTGACCTTTCCTCCAGAAGTTCTGTCTCC  
 GAGAAAGCCAAGGGCCTGATTCGAGGTTCTGCTGTGAATGGGAACATAGAATCGGAGCCCTGGAGTTG  
 AAGAAATAAAAATAATCTTTTTTTTGAAGGTGTTGACTGGGAACACATCAGGAGAGACCAGCTGCGAT  
 ATCTATTGAAATCAAGAGCATCGATGATACCTCAAACCTCGATGAATTTCCAGAGTCTGATATTCTTAAG  
 CCCACAGTGACCAAGTAGTCATCCTGAGACGGACTACAAGAACAAGACTGGGTCTTCAATTACA  
 CATAAAGCGCTTCGAGGGCCTGACAGCCAGGGGGCCATACCTCGTACATGAAAGCAGCAAAA

**ACGCGT**ACGCGGCCGCTCGAG - GFP Tag - GTTTAA

**Protein Sequence:**

>MG207422 representing NM\_134115  
 Red=Cloning site Green=Tags(s)

MAMTGSTPCSSMSNHTKERVTMTKVTLENFYSNLIAQHEEREMRQKKLEKVMEEGLKDEEKRLRRSAHA  
 RKETEFRLRKRRLGLEDFESLKVIGRAFGEVRLVQKDTGHVYAMKILRKADMLEKEQVGHIRAERDI  
 LVEADSLWVVKMFYSFQDKLNLYLIMEFLPGDMMTLLMKKDTL TEEETQFYIAETVLAIDSIHQLGF IH  
 RDIKPDNLLLDKSGHVKLSDFGLCTGLKKAHRTEFYRNLNHSLSDFTFQNMNSKRKAETWKRNRRLAF  
 STVGTDPDYIAPEVFMQTGYNKLCDWWSLGVIMYEMLI GYPPFCSETPQETYKKVMNWKETLTFPPEVPVS  
 EKAKGLILRFCEWEHRIGAPGVVEIKNNLFFEGVDWEHIRERPAASIEIKSIDDTSNFDEFPESDILK  
 PTVTTSSHPETDYKNKDWVFINYTYKRFEGLTARGAIPSYMKAAK

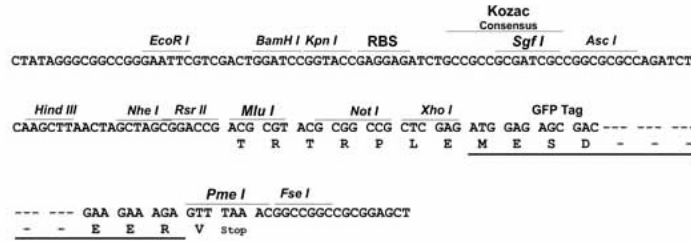
**TRTRPLE** - GFP Tag - V

**Restriction Sites:**

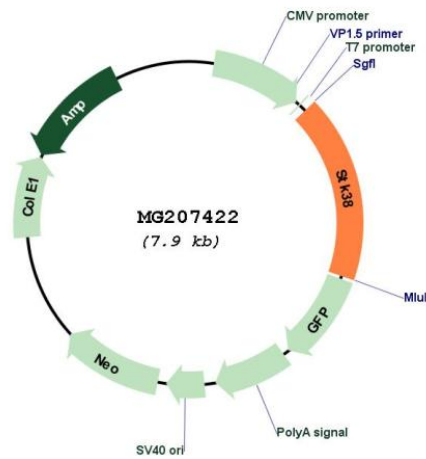
Sgfl-MluI

Cloning Scheme:

Cloning sites used for ORF Shutting:



Plasmid Map:



ACCN: NM\_134115

ORF Size: 1395 bp

**OTI Disclaimer:** Due to the inherent nature of this plasmid, standard methods to replicate additional amounts of DNA in E. coli are highly likely to result in mutations and/or rearrangements. Therefore, OriGene does not guarantee the capability to replicate this plasmid DNA. Additional amounts of DNA can be purchased from OriGene with batch-specific, full-sequence verification at a reduced cost. Please contact our customer care team at [custsupport@origene.com](mailto:custsupport@origene.com) or by calling 301.340.3188 option 3 for pricing and delivery.

The molecular sequence of this clone aligns with the gene accession number as a point of reference only. However, individual transcript sequences of the same gene can differ through naturally occurring variations (e.g. polymorphisms), each with its own valid existence. This clone is substantially in agreement with the reference, but a complete review of all prevailing variants is recommended prior to use. [More info](#)

**OTI Annotation:** This clone was engineered to express the complete ORF with an expression tag. Expression varies depending on the nature of the gene.

**Components:** The ORF clone is ion-exchange column purified and shipped in a 2D barcoded Matrix tube containing 10ug of transfection-ready, dried plasmid DNA (reconstitute with 100 ul of water).

**Reconstitution Method:**

1. Centrifuge at 5,000xg for 5min.
2. Carefully open the tube and add 100ul of sterile water to dissolve the DNA.
3. Close the tube and incubate for 10 minutes at room temperature.
4. Briefly vortex the tube and then do a quick spin (less than 5000xg) to concentrate the liquid at the bottom.
5. Store the suspended plasmid at -20°C. The DNA is stable for at least one year from date of shipping when stored at -20°C.

**RefSeq:** [NM\\_134115.3](#)

**RefSeq Size:** 3288 bp

**RefSeq ORF:** 1398 bp

**Locus ID:** 106504

**UniProt ID:** [Q91VJ4](#)

**Cytogenetics:** 17 A3.3

**Gene Summary:** Negative regulator of MAP3K1/2 signaling. Converts MAP3K2 from its phosphorylated form to its non-phosphorylated form and inhibits autophosphorylation of MAP3K2 (By similarity). [UniProtKB/Swiss-Prot Function]