

Product datasheet for **MG207408**

Rnf38 (BC060730) Mouse Tagged ORF Clone

Product data:

Product Type:	Expression Plasmids
Product Name:	Rnf38 (BC060730) Mouse Tagged ORF Clone
Tag:	TurboGFP
Symbol:	Rnf38
Synonyms:	1700065B19Rik; 2610202O07Rik; AA673263; Oip1
Mammalian Cell Selection:	Neomycin
Vector:	pCMV6-AC-GFP (PS100010)
E. coli Selection:	Ampicillin (100 ug/mL)



[View online »](#)

ORF Nucleotide Sequence:

>MG207408 representing BC060730
 Red=Cloning site Blue=ORF Green=Tags(s)

TTTTGTAATACGACTCACTATAGGGCGGCCGGAATTCGTCGACTGGATCCGGTACCGAGGAGATCTGCC
 GCC**CGCATCGCC**

ATGAGAGAGAGTGAAGATAGTCCAAGTCTAAGAGACAGCGCCTCTCTCATTAGCTTTGATTATACAT
 CAGCATACCAGCTCCCTCACCACCAATGCGACCATGGGAGATGACATCAAATAGGCAGCCCCCTCAGT
 TCGACCAAATCAACATCACTTCTCAGGGGAACGCTGTAACACACCTGCACGCAACAGAAGAAGTCCCTCT
 GTTAGGGCTCAGCGAGGAAGAAGGGAACGCTGTCTCGACATAATTCCATTAGTCAAGATGAAAATATC
 ACCATCTCCCTTATGCACAGCAGCAAGCAATAGAGGAACCTCGAGCCTTCCACCCCTCCGAATGTATCTCC
 CCGTCTGTACATCCAGCTGCCATCCCCCAGCAGAATGCAGTCATGGTTGACATACATGATCAGCTC
 CATCAAGGAACAGTTCCTGTCTCTACACGGAACACTACGGTGGCACCCCATGGGCTTCCACTCTGCACTG
 GCCAGCACATCCCTGCTGCAGTACACAGCAGGTCCAGGATGCTCGGTGGTTTTAGTGGACAACACCT
 CCCCCTGTAGTGTGCCTCCTCAATGCTTCAGGCATGTTAGTTCAGCACTTACCAGTACCATATGCT
 GGGTCCCGCCCTCATTCTAGCGATCCGTTTCTATACATCCTCCTCATCTTTCTCCCATCATCCTC
 CCCACTTGCCACCACCAGGCCAATTTGTCCTTTCCAAACACAGCAGTACGATCGCCTCTCGAGAGGAT
 AGAAAAAGAAGTGGAGCTCTTAGGAGAACATCTCAAGTAGGCAGTTTTACTTATCCCCCTTCAGCCAT
 CCCCCAACATTACCTCCGTGAGTCTTTGAGTTCCTGACACATGACCCCTTGCATCAGGAGGTGTCTCT
 TTGGAGTACCTTACCACCATTTATGCCTCGGAGACTCACAGGACGTAGTAGATACCGATCCCAGCAGCC
 AATGCCCTCCTCCTTACCATCCAGCTTACTACCATACGTGCTATCAATGCTTCCAGTACCACCTGCA
 GTGGGCCCAACCTTCAGCTTTGAATTAGATGTAGAAGCGGAGAAGTTGAAAATTATGAGGCCCTGTAA
 ACTTGGCGGAGAGACTGGGAGAGGCGAAACCTCGGGACTGACTAAAGCAGATATTGAACAGCTTCCCTTC
 GTACAGGTTCAATCCTAGCAACCACCAGTACAGCAGACTTTGTGTAGTATGCATGTGTGATTTTGGAG
 TCAAGGACGTTCTTAGAGTCTTACCTGTAACCACGAGTTCATGCCAAGTGTGTTGATAAATGGCTTA
 AGGAAACCGTACCTGCCCAATTTGCCGAGCTGATGCTTCAGAAGTGCATCGCGATTCAGAG

ACGCGTACGCGGCCGCTCGAG – GFP Tag – GTTTAA

Protein Sequence:

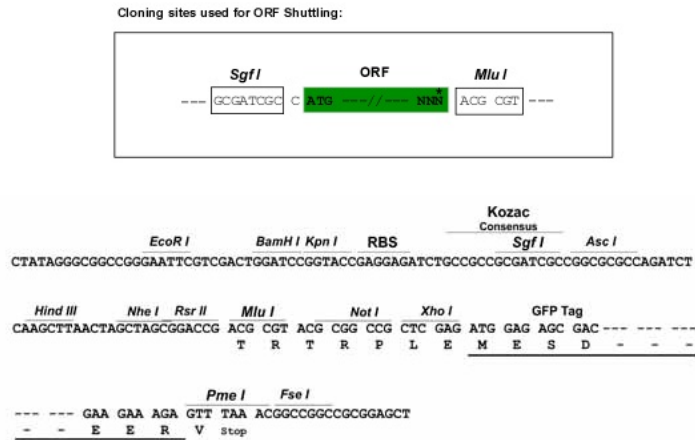
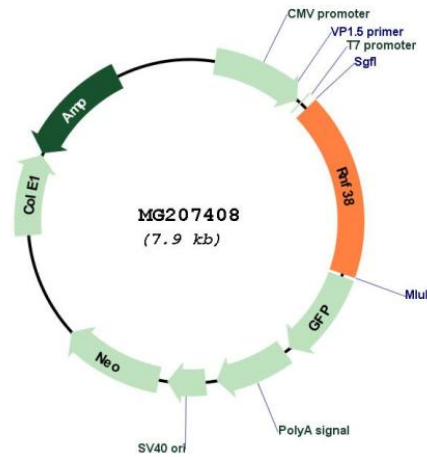
>MG207408 representing BC060730
 Red=Cloning site Green=Tags(s)

MRESEDSPSPKRQRLSHSVFDYTSASPAPSPMPRPWEMTSNRQPPSVRPNQHHFSGERCNTPARNRRSPP
 VRRQRGRRLSRHNSISQDENYHLLPYAQQQAIEEPRAFHPNVSPLLHPAAHPPQNAVMDIHDQL
 HQGTVPVSYTVTIVAPHGLPLCTGQHIPACSTQQVPGCSVVFSGQHLPVCSVPPMLQACSVQHLVPVYA
 AFPPLISSDPFLIHPPHLSPHHPPHLPVPPGQFVFPQTQQSRSPQLQRIENEVELLGEHLQVGSFTYPPSAH
 PPTLPPSAPLQFLTHDPLHQEVSFVGPVPPFMPRRLTGRSRYRSQQMPPPPYHPSLLPYVLSMLPVPPA
 VGPTFSFELDVEDGEVENYEALLNLAERLGEAKPRGLTKADIEQLPSYRFNPSNHQSEQLCVVCMCDFE
 SRQLLRVLPCHNEFHAKCVDKWLGKGRNRCPICRADASEVHRDSE

TRTRPLE – GFP Tag – V

Restriction Sites:

Sgfl-MluI

Cloning Scheme:

Plasmid Map:


ACCN: BC060730

ORF Size: 1394 bp

OTI Disclaimer: The molecular sequence of this clone aligns with the gene accession number as a point of reference only. However, individual transcript sequences of the same gene can differ through naturally occurring variations (e.g. polymorphisms), each with its own valid existence. This clone is substantially in agreement with the reference, but a complete review of all prevailing variants is recommended prior to use. [More info](#)

OTI Annotation: This clone was engineered to express the complete ORF with an expression tag. Expression varies depending on the nature of the gene.

Components:	The ORF clone is ion-exchange column purified and shipped in a 2D barcoded Matrix tube containing 10ug of transfection-ready, dried plasmid DNA (reconstitute with 100 ul of water).
Reconstitution Method:	<ol style="list-style-type: none">1. Centrifuge at 5,000xg for 5min.2. Carefully open the tube and add 100ul of sterile water to dissolve the DNA.3. Close the tube and incubate for 10 minutes at room temperature.4. Briefly vortex the tube and then do a quick spin (less than 5000xg) to concentrate the liquid at the bottom.5. Store the suspended plasmid at -20°C. The DNA is stable for at least one year from date of shipping when stored at -20°C.
RefSeq:	<u>BC060730</u> , <u>AAH60730</u>
RefSeq Size:	4990 bp
RefSeq ORF:	1394 bp
Locus ID:	73469
Cytogenetics:	4 B1
Gene Summary:	Acts as an E3 ubiquitin-protein ligase able to ubiquitinate p53/TP53 which promotes its relocalization to discrete foci associated with PML nuclear bodies. Exhibits preference for UBE2D2 as a E2 enzyme.[UniProtKB/Swiss-Prot Function]