

## Product datasheet for **MG207403**

### 2210010L05Rik (BC017534) Mouse Tagged ORF Clone

#### Product data:

Product Type:	Expression Plasmids
Product Name:	2210010L05Rik (BC017534) Mouse Tagged ORF Clone
Tag:	TurboGFP
Symbol:	2210010L05Rik
Synonyms:	2210010L05Rik; 9630025I22Rik; AI836200; AW212394; MMR2
Mammalian Cell Selection:	Neomycin
Vector:	pCMV6-AC-GFP (PS100010)
E. coli Selection:	Ampicillin (100 ug/mL)



[View online »](#)

**ORF Nucleotide Sequence:**

>MG207403 representing BC017534  
 Red=Cloning site Blue=ORF Green=Tags(s)

TTTTGTAATACGACTCACTATAGGGCGGCCGGAATTCGTCGACTGGATCCGGTACCGAGGAGATCTGCC  
 GCC**GCGATCGCC**

ATGTGGGGCTCCCTGGGCTGGGCTGGCCATGCTGTCTGTGGGTATTGGAATCGACTATACTCATATAG  
 ATGTGCTCATTGATGGGAAGGGGTGTAAGCCCCCTGAGTACCGAACTACCAGATTGTCTTCATCGTCTT  
 TGGAGTCTCATGACCATGGCCCTGATCGTTGCCACTCAGTTCGGTTCCGCTACAACCACTTCAACAAT  
 AGTGATGGTAAAGGGAAAGAGGTGGAGATCCCACAGGTGAAAGGGACAACCTCCACAGAGTCTCTGAAG  
 AGACTCCAACGCCGCGACTCACTCACAGGCCCTCAACTTCTGGGACTTGATCAAGTTGCTATGCAGTGT  
 GCAGTATGGCTCGGTTCTGTTTGTGGCCTGGTTCATGGGTTTTGGATACGGCTTCGTGTTACCTTTCTC  
 TACTGGCATCTGGAAGACCTAAATGGAACAACCCCTTTGGGGTCTGTTTCAGTCTGAGTATGCTGT  
 CCGAGTTGACCGTTACTTCTTCAGCCACAAGCTTATTGAGTTGATTGGCCATATCAGGGTTTTATACAT  
 TGGCCTGGCCTGTAATACAGCTCGCTATATTTACATTTCTACCTGGAAAATGCCTGGACTGTCCTCCCT  
 ATGGAAGTTCTTCAAGGTGTACACACGACGCCATCTGGGCAGCGTGCATCTTTACCTCAGTGCAGCTG  
 TCCCCCTGAGCTGAGGACTTCTGCACAGGGAATCCTGCAAGGCCTTCATCTGGGTCTGGGGCGAGGATG  
 TGGTGCCATGATCGGAGGCGTGTAGTCAATTATTTGGGGCTGCTGCAACTTTCCGAGGGATTGGCATG  
 GCTTGCCCTGGTATCCTTCTCTCTTTGCCCTGATCCAGTGGCTGGCAGTACCAGATGAAGAAGAAGACA  
 AGACAATGTTGGCAGAAAGGATCCCAGTTCCTCTAGTCCCGTCCCATAGCAACCAATTGACCTGGTACA  
 GCAACAGACAGAAGATGTATGCCACGCGTTGAGGCCAGACTCCGCCAAGAAAACCAAGCACCAGGAA  
 GAGCAGGAAGATGTAATAAACCCGGCTGGGGGTGAGTCTCTCGCCTGGGTGACCTTTGTCTATGCTC  
 TCTACCAAGTTAAAGAGCTAATCAACTGACAAGAGAGAGCCGTCTTCTGAGATACAACCTTTACAGGG  
 GACCAAGTGAAGTTCGGGAAGCCTCTCCAGCTGGTGGAGCCAGCGTCCCCACGTGAAACTCACTCCGCC  
 TCACCTAGAAACAGCCATCCCCTGACACAGCAGCATCTCAAACGAGTCCAGCCCTGCTACCCCCAGTG  
 CTACCCCGCATGGACAGGAGAGTGGAGAGAAGCAGGCTCAGCCACTGTGGGAGAACAC

AG**GCGACCG**ACGCGTACGCGGCCGCTCGAG - GFP Tag - GTTTAA

**Protein Sequence:**

>MG207403 representing BC017534  
 Red=Cloning site Green=Tags(s)

MWGS LGWGLAMLSVIGIDYTHIDVLDGK GCKPPEYRNYQIVFIVFGVLM TMALIVATQFRFRYNHFN  
 SDGK GKEVEIPQVERDNSTESSEETPTAATHSQAFNFWDLIKLLCSVQYGSVLFVAWFMGFGYGFVFTFL  
 YWHLEDLNGTTTTLFGVCSVLSHVSELTAYFFSHKLIELIGHIRVLYIGLACNTARYIYISYLENAWTVLP  
 MEVLQGVTHAAIWAACISYLSAAVPELRTSAQILQLHLGLGRGCGAMIGGVLVNYFGAAATFRGIGM  
 ACLVILLLLFALIQWLA VPDEEEDK TMLAERIPVPS SPVPIATIDL VQQTEDVMPRVEARLPPKKTKHQE  
 EQEDV NKP AWGVSSSPWTFVYALYQVKELIQLTRESRASEIQPLQGTSENREASPAGGAQRAPRETHSA  
 SPRNQSPD TAASQTQSSPAHPSATPHGQESGEKQAQPTYGEH

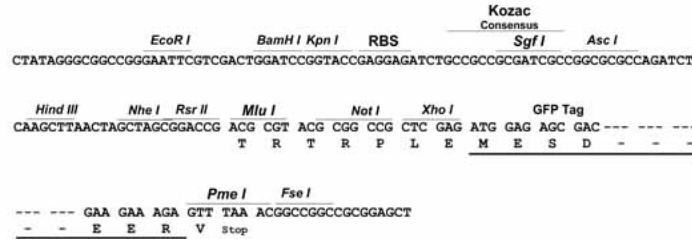
SGP**TRRRLE** - GFP Tag - V

**Restriction Sites:**

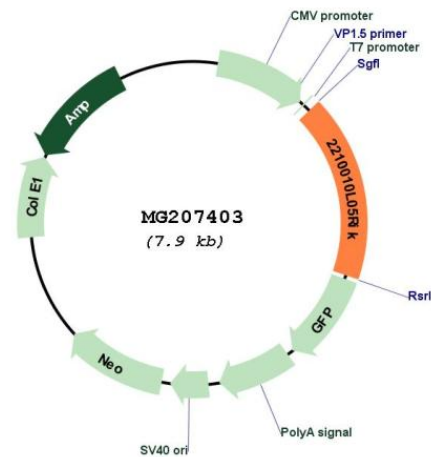
Sgfl-RsrII

Cloning Scheme:

Cloning sites used for ORF Shuttling:



Plasmid Map:



ACCN: BC017534

ORF Size: 1391 bp

OTI Disclaimer: The molecular sequence of this clone aligns with the gene accession number as a point of reference only. However, individual transcript sequences of the same gene can differ through naturally occurring variations (e.g. polymorphisms), each with its own valid existence. This clone is substantially in agreement with the reference, but a complete review of all prevailing variants is recommended prior to use. [More info](#)

OTI Annotation: This clone was engineered to express the complete ORF with an expression tag. Expression varies depending on the nature of the gene.

<b>Components:</b>	The ORF clone is ion-exchange column purified and shipped in a 2D barcoded Matrix tube containing 10ug of transfection-ready, dried plasmid DNA (reconstitute with 100 ul of water).
<b>Reconstitution Method:</b>	<ol style="list-style-type: none"><li>1. Centrifuge at 5,000xg for 5min.</li><li>2. Carefully open the tube and add 100ul of sterile water to dissolve the DNA.</li><li>3. Close the tube and incubate for 10 minutes at room temperature.</li><li>4. Briefly vortex the tube and then do a quick spin (less than 5000xg) to concentrate the liquid at the bottom.</li><li>5. Store the suspended plasmid at -20°C. The DNA is stable for at least one year from date of shipping when stored at -20°C.</li></ol>
<b>RefSeq:</b>	<u><a href="#">BC017534</a></u> , <u><a href="#">AAH17534</a></u>
<b>RefSeq Size:</b>	2744 bp
<b>RefSeq ORF:</b>	1391 bp
<b>Locus ID:</b>	98682
<b>Cytogenetics:</b>	1 C1.1
<b>Gene Summary:</b>	MHC class I receptor. Binds only to H-2 class I histocompatibility antigen, K-D alpha chain (H-2K(D)).[UniProtKB/Swiss-Prot Function]