

Product datasheet for **MG207348**

Ighg1 (BC057688) Mouse Tagged ORF Clone

Product data:

Product Type:	Expression Plasmids
Product Name:	Ighg1 (BC057688) Mouse Tagged ORF Clone
Tag:	TurboGFP
Symbol:	Ighg1
Synonyms:	IgG1, VH7183
Mammalian Cell Selection:	Neomycin
Vector:	pCMV6-AC-GFP (PS100010)
E. coli Selection:	Ampicillin (100 ug/mL)



[View online »](#)

ORF Nucleotide Sequence:

>MG207348 representing BC057688
 Red=Cloning site Blue=ORF Green=Tags(s)

TTTTGTAATACGACTCACTATAGGGCGGCCGGAATTCGTCGACTGGATCCGGTACCGAGGAGATCTGCC
 GCC**CGGATCGCC**

ATGGCTGTCTGGGGCTGCTCCTCTGCCTGGTGACCTTTCCAAGCTGTGTCTGTACAAGTGCAGATGA
 AGGAGTCAGGACCTGACCTTGTGCAGCCATCACAGACTCTGTCTCTCACCTGCACCTGTCTCTGGTTCTC
 ATTAAGTAGCTATGGTGTACATTGGTTTCGCAAGCCTCCGAGAAAAGGATTGGAATGGTTGGGAGGAATA
 TGGTCTGGTGGAAGCATATACTATACTCCAGCTCTCAGTCCCGACTGAGTGTCAACAGGGACATCTCTA
 AGAGCCAAGTTTTCTTTAAAATGACCAGCTGCAAAGTGAAGACACGGCTGTGTACCACTGTGCCAGACG
 TGGTAGCTACGAGGACTTCGATGTCTGGGGCGCAGGGACCACGGTCACCGTCTCCGCAGCCAAAACGACA
 CCCCCATCTGTCTATCCACTGGCCCTGGATCTGTGCCAAACTAACTCCATGGTGACCCTGGGATGCC
 TGGTCAAGGGCTATTTCCCTGAGCCAGTGACAGTGACCTGGAAGTCTGGATCCCTGTCCAGCGGTGTGCA
 CACCTTCCAGCTGTCTGCAGTCTGACCTCTACACTCTGAGCAGCTCAGTGACTGTCCCCTCCAGCACC
 TGGCCCAGCCAGACCGTCACTGCAACGTTGCCACCCGCGCCAGCAGCACCAAGGTGGACAAGAAAATTG
 TGCCAGGGATTGTGGTTGAAGCCTTGCATATGTACAGTCCCAGAAGTATCATCTGTCTTCATCTTCCC
 CCCAAAGCCAAAGGATGTGCTCACCATTACTCTGACTCCTAAGGTCACGTGTGTTGGTAGACATCAGC
 AAGGATGATCCCAGGTCAGTTCAGCTGGTTTGTAGATGATGTGGAGGTGCACACAGCTCAGACAAAAC
 CCCGGGAGGAGCAGTTCAACAGCACTTCCGTTCACTCAGTGAAGTCCCATCATGCACCAGGACTGGCT
 CAATGGCAAGGAGTTCAAATGCAGGGTCAACAGTGCAGCTTCCCTGCCCCATCGAGAAAACCATCTCC
 AAAACCAAGGCAGACCGAAGGCTCCACAGGTGTACACCATTCCACCTCCAAGGAGCAGATGGCCAAGG
 ATAAAGTCAGTCTGACCTGCATGATAACAGACTTCTTCCCTGAAGACATTACTGTGGAGTGGCAGTGGAA
 TGGGCAGCCAGCGGAGAATAACAAGAACTCAGCCATCATGGACACAGATGGCTTACTTTCGCTAC
 AGCAAGCTCAATGTGCAGAAGAGCAACTGGGAGGCAGAAATACTTTCACCTGCTCTGTGTACATGAGG
 GCCTGCACAACCACATACTGAGAAGAGCCTCTCCCACTCTCTGGTAAA

ACGCGTACGCGGCCGCTCGAG - GFP Tag - GTTTAA

Protein Sequence:

>MG207348 representing BC057688
 Red=Cloning site Green=Tags(s)

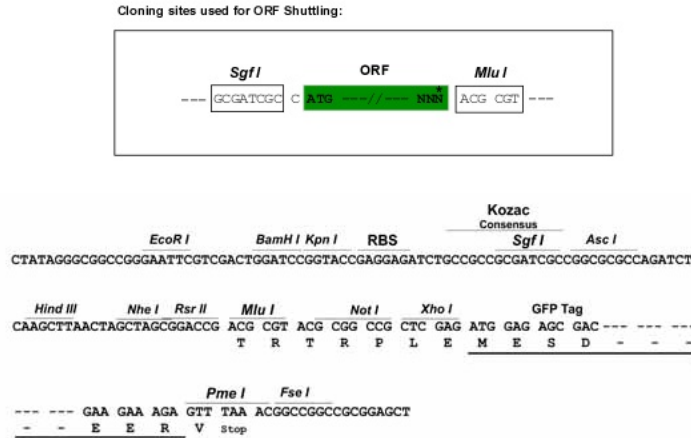
MAVLGLLLCLVTFPSCVLSQVQMKESGPDLVQPSQTLSTCTVSGFSLSSYGVHWRKPPRKGLEWLGGI
 WSGGSIYYTPALSSRLSVNRDISKSQVFFKMTSLQSEDTAVYHCARRGSYEDFDVWGAGTTVTVSAKTT
 PPSVYPLAPGSAQTNSMVTLGCLVKGYFPEPVTVTWNSGSLSSGVHTFPAVLQSDLYTLSSSVTVPSST
 WPSQTVTCNVAHPASSTKVDKKIVPRDCGCKPCICTVPEVSSVFIFFPKPKDVLITLTPKVTCVVVDIS
 KDDPEVQF SWFVDDVEVHTAQTKPREEQFNSTFRSVSELPIMHQDWLNGKEFKCRVNSAAFPAPIEKTIS
 KTKGRPKAPQVYIIPPPKEQMAKDKVSLTMCITDFFPEDITVVEWQWNGQPAENYKNTQPIMDTDGSYFVY
 SKLNVQKSNWEAGNTFTCSVLHEGLHNNHTEKSLSHSPGK

TRTRPLE - GFP Tag - V

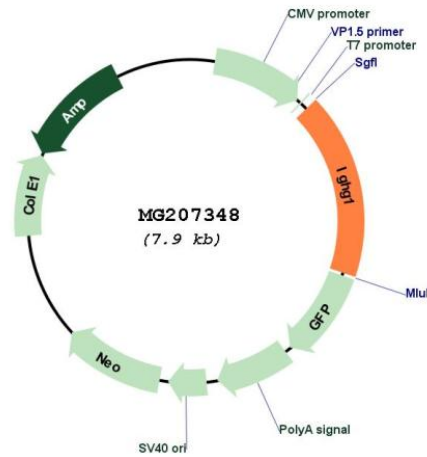
Restriction Sites:

Sgfl-MluI

Cloning Scheme:



Plasmid Map:



ACCN: BC057688

ORF Size: 1382 bp

OTI Disclaimer: The molecular sequence of this clone aligns with the gene accession number as a point of reference only. However, individual transcript sequences of the same gene can differ through naturally occurring variations (e.g. polymorphisms), each with its own valid existence. This clone is substantially in agreement with the reference, but a complete review of all prevailing variants is recommended prior to use. [More info](#)

OTI Annotation: This clone was engineered to express the complete ORF with an expression tag. Expression varies depending on the nature of the gene.

Components:	The ORF clone is ion-exchange column purified and shipped in a 2D barcoded Matrix tube containing 10ug of transfection-ready, dried plasmid DNA (reconstitute with 100 ul of water).
Reconstitution Method:	<ol style="list-style-type: none">1. Centrifuge at 5,000xg for 5min.2. Carefully open the tube and add 100ul of sterile water to dissolve the DNA.3. Close the tube and incubate for 10 minutes at room temperature.4. Briefly vortex the tube and then do a quick spin (less than 5000xg) to concentrate the liquid at the bottom.5. Store the suspended plasmid at -20°C. The DNA is stable for at least one year from date of shipping when stored at -20°C.
RefSeq:	<u>BC057688</u>
RefSeq Size:	1657 bp
RefSeq ORF:	1382 bp
Locus ID:	16017
Cytogenetics:	12 62.1 cM