

## Product datasheet for **MG207346**

### Adck5 (NM\_172960) Mouse Tagged ORF Clone

#### Product data:

Product Type:	Expression Plasmids
Product Name:	Adck5 (NM_172960) Mouse Tagged ORF Clone
Tag:	TurboGFP
Symbol:	Adck5
Synonyms:	A230108P17
Mammalian Cell Selection:	Neomycin
Vector:	pCMV6-AC-GFP (PS100010)
E. coli Selection:	Ampicillin (100 ug/mL)



[View online »](#)

**ORF Nucleotide Sequence:**

>MG207346 representing NM\_172960  
 Red=Cloning site Blue=ORF Green=Tags(s)

TTTTGTAATACGACTCACTATAGGGCGGCCGGAATTCGTCGACTGGATCCGGTACCGAGGAGATCTGCC  
 GCC**CGCATCGCC**

ATGTGGCGGCCGATGCGACTGTGCTCACTTCCACTCTACCTGCTGCAGAGCAGGCAGAAGCCTGGCCGT  
 GCCTGCCATATTCTTACAGGAGAACTTCAAGAGCCCACCAGCAAGGACCTCAAGAGCCAGGCTGCTGTG  
 GAGGCGGGCACTCTTCCACTGTGGTGGGACACCCCTTCTACTTGGAGCCTACTACTTTCATGGCAGAG  
 GCATCGGAGAGGAGGAAGCTGCGACTTGCAGTCGATGGTATCGGGCGCTTTGGCAGGTCTGTGAAGATTG  
 GTTTGTTTCATCTCCACGGACTACTGGTGGTGCACAAACGTTGCTTTCGAGGAGTGAAGAGAACAGCCC  
 GAAGTATGTGGAGATCATGTCTGCCTGTACCAGCGTGCAGCTGACACCCCTGGTGGCTGGAGCCATCCGC  
 AACGGGGGCTCTATGTAAACTGGCCAAAGGCTGTGCTCCTTCAACCACCTGTGCCGACAGAGTACA  
 TCCAGACGCTGCGTGTGCTGGAGGACAAGGCCCTCACTCGGGCTTCCGGGAGGTGGATGAGTTGTTCT  
 TGAAGACTTCCAGGCACTCCCTAATGAACCTTCCAGGAGTTTACTATGAGCCGATGGCTGCTGCAAGC  
 CTGGCTCAGGTGCACCGTCCAAGCTACACGATGGCACTGATGTAGCTGTAAAGGTACAGTACATTGACC  
 TACGAGACCGCTTGGACGAGACGTGCAGACCTTGGAGCTCCTGCTGCGGCTCGTGGAGCTCATGCACCC  
 CAGCTTCCGGTTCAGCTGGTCTACAGGACCTGAAGGGGACCCTGGTCCAGGAGCTGGACTTCGAGAAT  
 GAGGGCCGAAATGCTGAGCGCTGTGCTCAGGAGCTAAAGCACTTCCACTATGTTGTTATCCCTCGGGTGC  
 ACTGGGACAGGTCCAGCAAGCGGGTGTGACAGCTGACTTCTGTAATGGCTGTAAGGTGAATGACATGGA  
 GGGCATCAAGAGTCAGGGGCTGGCAGTGCAGGATGTAGCAAAGAAGCTGATCCAGACCTTGGTGAACAG  
 ATCTTCCACACTGGCTTCACTTCACTCTGACCCCACTTGGCAATGTTCTGGTCCGAAAGGTCCAGATG  
 GAAAGCAGAGCTGGTGTCTCTGGACACGGGCTCTACCAGTTCCTGGACGAGAAGGACCGATCCCTCT  
 CTGCCAGCTGTGGCGGGCCATCATCCTGAGGGACAATGCTGCAATGAAGAAACATGCAGCTGCACCTGGG  
 GTCCAAGACTACATGCTCTTCTGAGGTGCTCATGCAGCGACCAGTACGCTGGCCAACTGTGGGGTT  
 CCCACCTGATCAGCCGGGAGGAGGCGGCCTACATGCAGGACATGGCCCGTGAACACTTTGATGGCATAAT  
 GGAAGTGTCAAGGCATTGCCACGGCCTATGCTGCTAGTGTGCGAAACATCAACACAGTGCAGCCATC  
 AACTCGAACCTGGGCACCCCTGTGACCGCTACTTCTCATGGCCAAGAGTGTGCTGTGGGGTTGGAGCC  
 GCCTGGTGGTGCAGCGTACCAAGGCATTTACGGCAGCAGCCTCCTGCGCCACATCAAGTCTCTGGGA  
 GGCATTAAGTTGAGATGGCCCTGAGGCTGAAATCCTAGCCATGCGGCTCACCGCCCTCATGCTGCGT  
 GTTCTGGTCCGCTGGCTTTGCCCAAGGCTGAGGCCGAGGAGTCTATCAGTACCTGGAGATG

**ACGCGTACGCGGCCGCTCGAG** - GFP Tag - GTTTAA

**Protein Sequence:**

>MG207346 representing NM\_172960  
 Red=Cloning site Green=Tags(s)

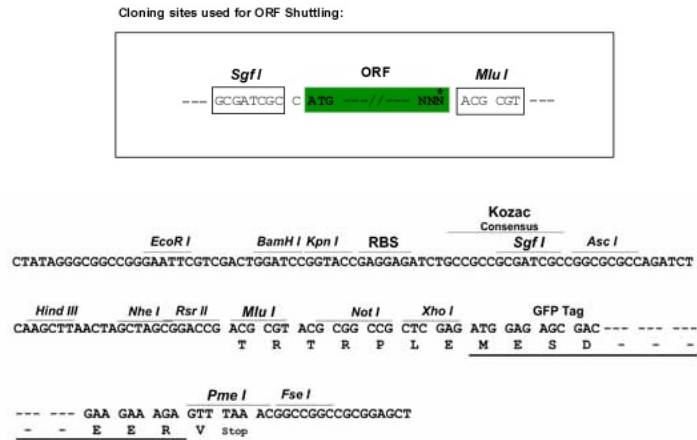
MWRPMRLCHFSTLLQSRQKPWPCPAIFFRRNFKSPPARTSRARLLWRRALSATVVGTPFLLGAYYFMAE  
 ASERRKRLAVDGIGRFGRSVKIGLFISTDYWWCTNVVLRGVEENSPKYVEIMSACHQRAADTLVAGAIR  
 NGGLYVKLGQGLCSFNHLLPTEYIQTLRVLEDKALTRGFREVDELFLDFQALPNELFQEFDYEPMAAAS  
 LAQVHRAKLHDGTDVAVKVQYIDLDRFDGDVQTELELLRLVELMHPSPGFVSWLQDLKGTLVQELDFEN  
 EGRNAERCAQELKHFHYVVIIPRVHWRSSKRVL TADFCNGCKVNDMEGIKSQGLAVQDVAKKLIQTFAEQ  
 IFHTGFIHSDPHPGNVLVRKGPDKAELVLLDHGLYQFLDEKDRSSLQWLWRAIILRDNAAMKKHAAALG  
 VQDYMLFSEVLMQRPVRLGQLWGSHLISREEAAYMQDMAREHFDGIMEVLKALPRPMLLVLRNINTVRAI  
 NSNLGTPVDRYFLMAKSAVWGSRLVGAAAYQGIYGSLLRHIKVLWEALKFEMALRLEILAMRLTALMLR  
 VLVRLGFAPKAEAEVYQYLEM

**TRTRPLE** - GFP Tag - V

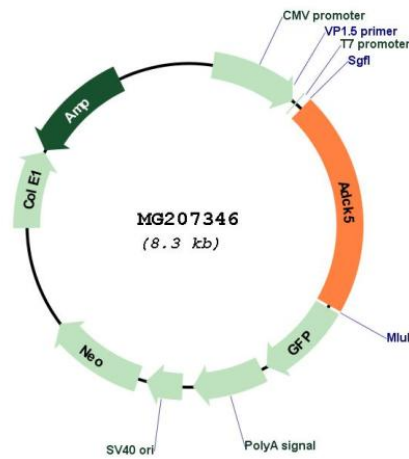
**Restriction Sites:**

Sgfl-MluI

Cloning Scheme:



Plasmid Map:



ACCN:                      NM\_172960  
 ORF Size:                      1746 bp

<b>OTI Disclaimer:</b>	The molecular sequence of this clone aligns with the gene accession number as a point of reference only. However, individual transcript sequences of the same gene can differ through naturally occurring variations (e.g. polymorphisms), each with its own valid existence. This clone is substantially in agreement with the reference, but a complete review of all prevailing variants is recommended prior to use. <a href="#">More info</a>
<b>OTI Annotation:</b>	This clone was engineered to express the complete ORF with an expression tag. Expression varies depending on the nature of the gene.
<b>Components:</b>	The ORF clone is ion-exchange column purified and shipped in a 2D barcoded Matrix tube containing 10ug of transfection-ready, dried plasmid DNA (reconstitute with 100 ul of water).
<b>Reconstitution Method:</b>	<ol style="list-style-type: none"><li>1. Centrifuge at 5,000xg for 5min.</li><li>2. Carefully open the tube and add 100ul of sterile water to dissolve the DNA.</li><li>3. Close the tube and incubate for 10 minutes at room temperature.</li><li>4. Briefly vortex the tube and then do a quick spin (less than 5000xg) to concentrate the liquid at the bottom.</li><li>5. Store the suspended plasmid at -20°C. The DNA is stable for at least one year from date of shipping when stored at -20°C.</li></ol>
<b>RefSeq:</b>	<a href="#">NM_172960.3</a> , <a href="#">NP_766548.2</a>
<b>RefSeq Size:</b>	2052 bp
<b>RefSeq ORF:</b>	1749 bp
<b>Locus ID:</b>	268822
<b>UniProt ID:</b>	<a href="#">Q80V03</a>
<b>Cytogenetics:</b>	15 D3
<b>Gene Summary:</b>	The function of this protein is not yet clear. It is not known if it has protein kinase activity and what type of substrate it would phosphorylate (Ser, Thr or Tyr).[UniProtKB/Swiss-Prot Function]