

Product datasheet for **MG207340**

Tulp3 (NM_011657) Mouse Tagged ORF Clone

Product data:

Product Type:	Expression Plasmids
Product Name:	Tulp3 (NM_011657) Mouse Tagged ORF Clone
Tag:	TurboGFP
Symbol:	Tulp3
Synonyms:	2310022L06Rik; AI316887
Mammalian Cell Selection:	Neomycin
Vector:	pCMV6-AC-GFP (PS100010)
E. coli Selection:	Ampicillin (100 ug/mL)



[View online »](#)

ORF Nucleotide Sequence:

>MG207340 representing NM_011657
 Red=Cloning site Blue=ORF Green=Tags(s)

TTTTGTAATACGACTCACTATAGGGCGGCCGGGAATTCGTCGACTGGATCCGGTACCGAGGAGATCTGCC
 GCC**CGGATCGCC**

ATGGAGGCGGCGCGCTGCGCACCCGGACCCCGGGGACAGTGCCTTTGACGATGAGACCTGAGGCTTC
 GGCAGCTGAAGCTGGACAATCAGAGGGCACTGCTGGAGAAGAAGCAGAGAAAGAAGCGCCTTGAGCCACT
 CATGGTACAGCCAAACCCAGAAGCCAGGCTGCGAAGGTTAAAGCCACGAGGCAGTGAGGAGCACACGCCCT
 CTGGTGGACCCTCAGATGCCTCGCAGCGACGTCATCCTACACGGCATCGACGGTCCAGCTGCTTTCTTA
 AGCCAGAGGCTCAGGATTTGAAAGCAAGCCTCAGGTTCTCTGTGGGCTCCCTGCCCAAGAAGAAGG
 CACGGAAGGGAGTGCAGATGGGAAAGCCCGAGGAGACAGCCCCAAGCCAGACCTTCAGGAGATTCTC
 CAAAAACACGGCATCTTGAGTAGTGTGAACATGACGAGGAGCCTGACAAGGAGGAAGATGAGGGGGAA
 ACCTCAGCTCCCGTCGGCTCGCTCAGAGGAGAGTGTGCAGCCAGCCAGAAAGCAGCCTCGGAGACAGG
 AGCTTCCGGTGTGACAGCCAGCAGGGTACGCCAGCTTGGAGAAGTGGAGAATTTAGAGGACTTTGCG
 TATAGCCCTGCCCTCGGGGTGTACGGTGAAGTGTAAAGTAACCGGGATAAGAAAGGCATGGACCGTG
 GCCTTTCCCCACCTACTATATGCACTGGAACGGGAGGAGAACCGAAGATATTTCTTCTAGCCGGTAG
 AAAGCGGAAAAAGAGCAAAACGTCCAACCTACCTGGTCTCCACAGACCCGACAGATTTGTCTCGTGAAGGG
 GAAAGTTACATTGGCAAACCTCAGATCCAATCTCATGGGACCAAGTTCACAGTGTATGACCATGGTGTCA
 ACCCAGTCAAGGCCCAGGGTCTGGTGGAGAAGGCCACACCCGCCAGGAGCTGGCTGTATCTGTTATGA
 AACAAATGTCCTCGGTTTCAAAGTCCCAGGAAAATGTCTGTGATCATCCCGGGGATGAACATGAACCAT
 GAGCGCATCCCTTTCAGGCCACGAAATGAACACGAGAGCTTGTCTTCAAATGGCAAAACAAATCCATGG
 AGAACCTGATCGAGCTGCACAACAAGGCCCGGTGTGGAATGACGACACCCAGTCTCAGTGTGAACTT
 TCACGGCAGAGTCAACCCAGGCATCCGTGAAAAACTTCCAGATCGTCCACGGGAATGACCCCTGACTACATC
 GTCATGCAGTTTGGACGCGTGGCTGATGACGTGTTCACTGGACTATAACTACCCACTGTGCGCACTTC
 AAGCCTTCGCCATCGGGCTGTCCAGCTTGTACAGCAAGCTGGCGTGTGAA

AG**CGGACCG**ACGCGTACGCGGCCGCTCGAG - GFP Tag - GTTTAA

Protein Sequence:

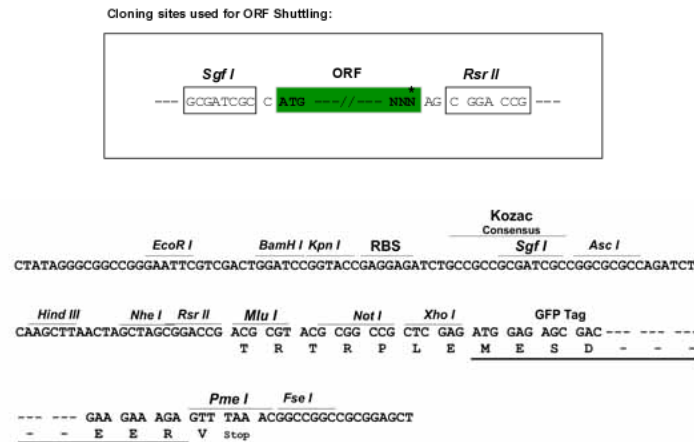
>MG207340 representing NM_011657
 Red=Cloning site Green=Tags(s)

MEAARCAPGRGDSAFDDETLRLRQLKLDNQRALLEKKQRKRLEPLMVQPNPEARLRRLKPRGSEEHTP
 LVDPQMPRSDVILHGIDGPAFLKPEAQDLESKPQVLSVGSPEEGTEGSADGESPEETAPKPDLQEIL
 QKHGILSSVNYDEEPDKEEDEGGNLSPPSARSEESAAASQKAASETGASGVTAQQGDAQLGEVENLEDFA
 YSPAPRGVTVKCKVTRDKKGMDRGLFPTYMHLEEREENRKIFLLAGRKRKSKTSNYLVSDPTDLSREG
 ESYIGLRSNLMGTFVYDHGVNPVKAQGLVEKAHTRQELAAICYETNVLGFKGPRKMSV IIPGMNMNH
 ERIPFRPRNEHESLLSKWQNKSMENLIELHNKAPVWDDTQSYVLNFHGRVTVQASVKNFQIVHGNDPDYI
 VMQFGRVADDVFTLDYNYPLCALQAFIIGLSSFDSKLACE

SGP**TRRRLE** - GFP Tag - V

Restriction Sites:

Sgfl-RsrII

Cloning Scheme:


ACCN: NM_011657

ORF Size: 1380 bp

OTI Disclaimer: The molecular sequence of this clone aligns with the gene accession number as a point of reference only. However, individual transcript sequences of the same gene can differ through naturally occurring variations (e.g. polymorphisms), each with its own valid existence. This clone is substantially in agreement with the reference, but a complete review of all prevailing variants is recommended prior to use. [More info](#)

OTI Annotation: This clone was engineered to express the complete ORF with an expression tag. Expression varies depending on the nature of the gene.

Components: The ORF clone is ion-exchange column purified and shipped in a 2D barcoded Matrix tube containing 10ug of transfection-ready, dried plasmid DNA (reconstitute with 100 ul of water).

Reconstitution Method:

1. Centrifuge at 5,000xg for 5min.
2. Carefully open the tube and add 100ul of sterile water to dissolve the DNA.
3. Close the tube and incubate for 10 minutes at room temperature.
4. Briefly vortex the tube and then do a quick spin (less than 5000xg) to concentrate the liquid at the bottom.
5. Store the suspended plasmid at -20°C. The DNA is stable for at least one year from date of shipping when stored at -20°C.

RefSeq: [NM_011657.2](#), [NP_035787.1](#)

RefSeq Size: 3401 bp

RefSeq ORF: 1383 bp

Locus ID: 22158

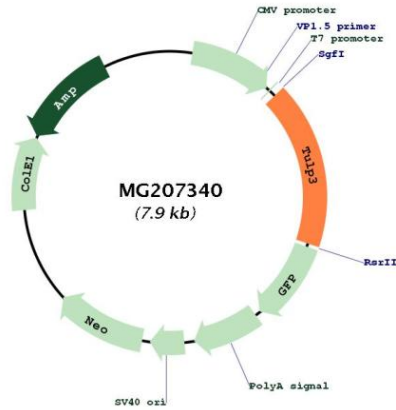
UniProt ID: [O88413](#)

Cytogenetics: 6 62.96 cM

Gene Summary:

Negative regulator of the Shh signaling transduction pathway: recruited to primary cilia via association with the IFT complex A (IFT-A) and is required for recruitment of G protein-coupled receptor GPR161 to cilia, a promoter of PKA-dependent basal repression machinery in Shh signaling. Binds to phosphorylated inositide (phosphoinositide) lipids. Both IFT-A- and phosphoinositide-binding properties are required to regulate ciliary G protein-coupled receptor trafficking. Not involved in ciliogenesis.[UniProtKB/Swiss-Prot Function]

Product images:



Circular map for MG207340