

## Product datasheet for **MG207339**

### Chrm1 (NM\_007698) Mouse Tagged ORF Clone

#### Product data:

Product Type:	Expression Plasmids
Product Name:	Chrm1 (NM_007698) Mouse Tagged ORF Clone
Tag:	TurboGFP
Symbol:	Chrm1
Synonyms:	Chrm-1; M1; M1R
Mammalian Cell Selection:	Neomycin
Vector:	pCMV6-AC-GFP (PS100010)
E. coli Selection:	Ampicillin (100 ug/mL)



[View online »](#)

**ORF Nucleotide Sequence:**

>MG207339 representing NM\_007698  
 Red=Cloning site Blue=ORF Green=Tags(s)

TTTTGTAATACGACTCACTATAGGGCGGCCGGGAATTCGTCGACTGGATCCGGTACCGAGGAGATCTGCC  
 GCCCGGATCGCC

ATGAACACCTCAGTGCCCCCTGCTGTCTCAGTCCCAACATCACCGTCTTGGCACCAGGAAAGGGTCCCTGGC  
 AAGTGGCATTTCATCGGGATCACACAGGCTCCTGCTCTGGCTACAGTGACAGGCAACCTGCTGGTGTCT  
 CATCTCCTTCAAGGTCAACACAGAGCTCAAGACAGTCAACAACACTTCTCCTGCTGAGCCTGGCCTGTGCT  
 GATCTCATCATTGGCACTTTCTCCATGAACCTCTATACCACATACCTGCTCATGGCCACTGGGCTCTGG  
 GCACACTGGCCTGTGACCTCTGGCTGGCCCTGGACTATGTGGCCAGCAACGCCTCTGTATGAATCTTCT  
 GCTCATCAGCTTTGACCGTTACTTCTCAGTGACCCGACCCCTGAGCTACCGAGCCAAGCGCACTCCCCGC  
 AGGGCAGCTCTGATGATTGGCCTCGCGTGGTGGTTTCTTCGTTCTCTGGGCCCGCCATCTCTTCT  
 GGCAATACCTAGTTGGGAGCGGACAGTGTGGCTGGCAGTGTACATCCAGTTCTCTCCAACCCAT  
 CATCACTTTTGGCACAGCCATGGCCGCTTCTACCTCCCTGTACAGTCACTGTGTACGCTGTACTGGCGC  
 ATCTACCGGGAGACAGAAAACCGAGCCCGGAGCTAGCAGCCCTACAGGGCTCTGAGACACCAGGCAAAAG  
 GTGGTGGCAGCAGCAGCAGCTCAGAGAGGTCACAGCCAGGAGCTGAAGGCTCACCCGAGTCACTCCAGG  
 CCGCTGCTGTGCTGTTGCCGGGACCCAGACTTCTGCAGGCCTACAGCTGGAAAGAAGAAGAGGAAGAG  
 GATGAAGGCTCCATGGAGTCCCTCACATCTCTGAAGGTGAGGAGCTGGCTCAGAAGTGGTGATCAAGA  
 TGCCTATGGTAGATCCTGAGGCACAGGCACCCACCAAGCAGCCTCCCAAAAGCTCCCAAAATACAGTCAA  
 GAGGCCACCAAGAAAGCCGAGACCGAGGCGGCAAGGCCAAAACCCGAGGGAAGGAACAACCTGGCC  
 AAGAGAAAGACCTTCTCACTGGTCAAGGAGAAGAAGGCAGCTCGGACCTGAGTGCCATCTGCTGGCCT  
 TCATCCTCACCTGGACACCATATAACATCATGGTGTCTGTTGTCTACATTCTGCAAGGACTGTGTTCCAGA  
 AACCTATGGGAGCTGGGCTACTGGCTTTGCTACGTCAACAGCACTGTCAACCCATGTGCTACGCACTC  
 TGCAACAAAGCCTTCCGGGACACTTCCGCTGCTGTTGTCTGCCGCTGGGACAAGCGCGCTGGCGCA  
 AAATCCCAAGCGCCCTGGCTCTGTGCACCGCACCCCTCCCGCAATGC

ACGCGTACGCGGCCGCTCGAG - GFP Tag - GTTTAA

**Protein Sequence:**

>MG207339 representing NM\_007698  
 Red=Cloning site Green=Tags(s)

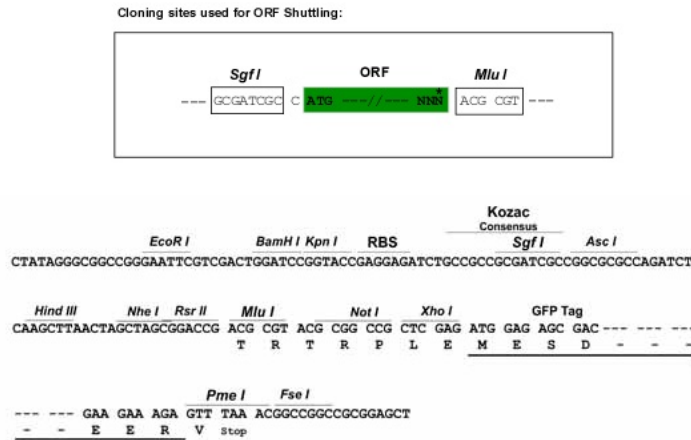
MNTSVPPAVSPNITVLPAGKGPWQVAFIGITTLGLSLATVTGNLLVLISFKVNTLKTVNNYFLLSLACA  
 DLIIGTFSMNLYTTYLLMGHWALGTLACDLWLALDYVASNASVMNLLISFDRYFSVTRPLSYRAKRTPR  
 RAALMIGLAWLVSFVLWAPAILFWQYLVGERTVLAGQCYIQFLSQPIITFGTAMAAFYLPVTVMCTLYWR  
 IYRETEENRARELAALQGSETPGKGGSSSSSERSQPGAEGSPESPGRCCRCRAPRLQAYSWKEEEEE  
 DEGSMSLTSSEGEPEGSEVVIKMPMVDPEAQAPTKQPPKSSPNTVKRPTKKGRDRGGKQKPRGKEQLA  
 KRKTFSLVKEKAARTLSAILLAFILTWTPYINIMVLVSTFKDCVPETLWELGYWLCYVNSTVNPNCYAL  
 CNKAFRDTRFRLLLLCRWDKRRWRKIPKRPGSVHRTPSRQC

TRTRPLE - GFP Tag - V

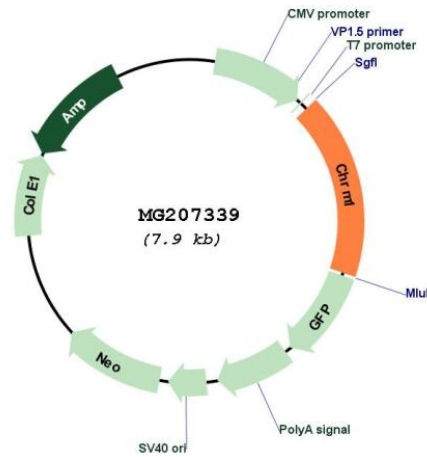
**Restriction Sites:**

SgfI-MluI

Cloning Scheme:



Plasmid Map:



ACCN: NM\_007698

ORF Size: 6206 bp

OTI Disclaimer: The molecular sequence of this clone aligns with the gene accession number as a point of reference only. However, individual transcript sequences of the same gene can differ through naturally occurring variations (e.g. polymorphisms), each with its own valid existence. This clone is substantially in agreement with the reference, but a complete review of all prevailing variants is recommended prior to use. [More info](#)

OTI Annotation: This clone was engineered to express the complete ORF with an expression tag. Expression varies depending on the nature of the gene.

<b>Components:</b>	The ORF clone is ion-exchange column purified and shipped in a 2D barcoded Matrix tube containing 10ug of transfection-ready, dried plasmid DNA (reconstitute with 100 ul of water).
<b>Reconstitution Method:</b>	<ol style="list-style-type: none"><li>1. Centrifuge at 5,000xg for 5min.</li><li>2. Carefully open the tube and add 100ul of sterile water to dissolve the DNA.</li><li>3. Close the tube and incubate for 10 minutes at room temperature.</li><li>4. Briefly vortex the tube and then do a quick spin (less than 5000xg) to concentrate the liquid at the bottom.</li><li>5. Store the suspended plasmid at -20°C. The DNA is stable for at least one year from date of shipping when stored at -20°C.</li></ol>
<b>RefSeq:</b>	<u><a href="#">NM_007698.3</a></u> , <u><a href="#">NP_031724.2</a></u>
<b>RefSeq Size:</b>	3816 bp
<b>RefSeq ORF:</b>	1383 bp
<b>Locus ID:</b>	12669
<b>UniProt ID:</b>	<u><a href="#">P12657</a></u>
<b>Cytogenetics:</b>	19 A
<b>Gene Summary:</b>	The muscarinic acetylcholine receptor mediates various cellular responses, including inhibition of adenylate cyclase, breakdown of phosphoinositides and modulation of potassium channels through the action of G proteins. Primary transducing effect is Pi turnover.[UniProtKB/Swiss-Prot Function]