

Product datasheet for **MG207338**

Slc46a3 (NM_027872) Mouse Tagged ORF Clone

Product data:

Product Type:	Expression Plasmids
Product Name:	Slc46a3 (NM_027872) Mouse Tagged ORF Clone
Tag:	TurboGFP
Symbol:	Slc46a3
Synonyms:	1200006F02Rik
Mammalian Cell Selection:	Neomycin
Vector:	pCMV6-AC-GFP (PS100010)
E. coli Selection:	Ampicillin (100 ug/mL)



[View online »](#)

ORF Nucleotide Sequence:

>MG207338 representing NM_027872
 Red=Cloning site Blue=ORF Green=Tags(s)

TTTTGTAATACGACTCACTATAGGGCGGCCGGAATTCGTCGACTGGATCCGGTACCGAGGAGATCTGCC
 GCC**GCGATCGCC**

ATGAAGATTTTCATTCATAGAGCCCGCCATTCTCCTGAACGCGTTTGTCTACTGACTCTGACCATCCCGCTGA
 CAGCGCAGTACGTGTACCGGAGGATCTGGGAGGAAACCGGTAACACACCTTTGCTTCCAATAGCAATGG
 CTCTGAGTGTGACCAAAAACAAAGCAGCTCCATCTTTGCATTCCGGGAGGAAGTTCAGAAAAAGGCATCT
 CTCTTCAACCTGCAGGTGAAATGAGTGCCTTAATTCCTGGTCTGGTGTCTACCTTCATGCTTTTAGCGA
 GCAGCGACAACCACGGACGGAACTTCCATGGTCTGTCTCTTGGCTCTCTGGGTACCAACACTTG
 GCTGTGCATGATGCTACTTTGACCTTCTCTCCAGCTTCTGATAGCATCCACCTTTATTGGCGCCCTC
 TTTGGGAATTACACCACGTTCTGGGAGCTTGGCTCGCCTACATTGTGGATCAGCAGAAAGAATAACAAGC
 ATAGAATCATCCGCATAGCCATCTGGATTTTCATGCTTGGAGTCGTTACTGGGCTAACAGGCCTGTCATC
 TGGCTATTTTATCCGAGAACTGGGTTTTGTGTGGTCTATTTTCATAACTGCCATGGTTCTTATAGTCAAC
 CTGGCCTACATTTTATTTTCTCAATGATCCCATAAAGGAGTCTTCATCTCAGATTGTGACTATGTCAT
 GTATCGAAAGCCTTAAGGACCTATTTTACCGGACTTACATGCTTTTTAAAAATGGTTCAGTAAGCGGCA
 GGCTTTGCTTTGTCTGCTGATTTTACCCTTGTCAATTTTCTTTGTGATAATCGGAATCTCCCAATT
 TTTACACTTTATGAGCTGGGCCCTCCGCTCTGCTGGAATGAGGTTTACATAGGCTATGGTTCAGCTCTGG
 GCAGTGTCTCCTTTTTAAGTAGTTTCTAGGCATCTGGCTATTTTCTTATTGTTTGAAGGATTTACAT
 TGCCTATATTGGCATTTTACCACCATGGTGGGATGACGCTGGCTGCCTTACCAGGACCCTCTAATG
 ATGTTTTTAGTCAGGATCCGTTTCAATTTACCACCATGCCACTTCCGCTCCTGAGGTCATGCTGTCAA
 AGGTGGTCCACTCGACTGAGCAAGGTGCGTTGTTTGGCTTGTATAGCTTTCTTAGAAACGCTGGCTGGGGT
 CACTTCGACCTCGCGTACAGTGGGATTTACTCAGCCACTGTTGCCTGGTACCCTGGCTTCATCTTCTCTG
 CTGTCCGCTGGCCTCCTGGTCTCCAGCCATCAGTCTATGCTGCGTCAAGAGCATTGGCTGGGAAGAGG
 GAAGCTACACACTCCTCGTCCACGAAGAACCAGTGAGCACACATCAGAC

AG**GCGACCG**ACGCGTACGCGGCCGCTCGAG - GFP Tag - GTTTAA

Protein Sequence:

>MG207338 representing NM_027872
 Red=Cloning site Green=Tags(s)

MKISFIEPAILLNAFAMTLTIPLTAQYVYRRIWEETGNYTFASNSNGSECDQNKSSSIFAFREEVQKKAS
 LFNLQVEMSALIPGLVSTFMLLASSDNHGRKLPVLSLGS LGTNTWLCMMSYFDLPLQLLIASFIFGAL
 FGNYYTTFWGAFCAYIVDQQKEYKHRIIRIAILD FMLGVVTGLTGLSSGYFIRELGFVWSYFITAMVLIVN
 LAYILFFLNDPIKESSSQIVTMSCIESLKDLFYRTYMLFKNGSSKRQALLCLLIFTLVIYFFVIIIGISPI
 FTLYELGPPLCWNEVYIGYGSALGSVFLSSFLGIWLF SYCLKDIHIAYIGIFTMVGMTLAAFRTTLM
 MFLVRIPFIFTIMPLSVLRSM LSKVVHSTEQGALFACIAFLETLAGVTSTAYSIGIYSATVAWYPGFIFL
 LSAGLLVLP AISLCCVKSIGWEEGSYTLVHEEPSEHTSD

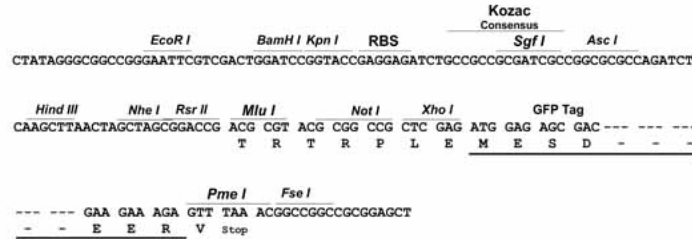
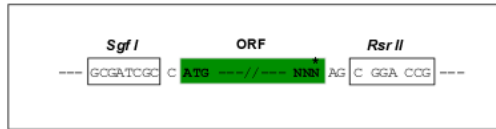
SGP**TRRRLE** - GFP Tag - V

Restriction Sites:

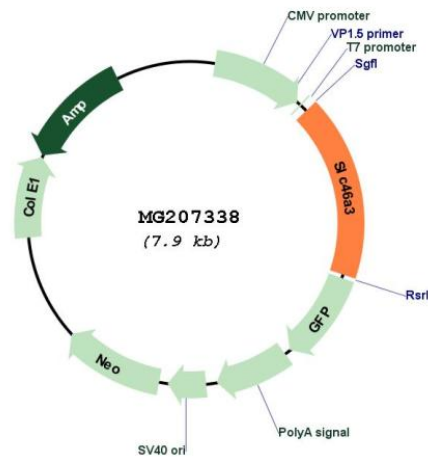
Sgfl-RsrII

Cloning Scheme:

Cloning sites used for ORF Shuttling:



Plasmid Map:



ACCN: NM_027872

ORF Size: 1380 bp

OTI Disclaimer: The molecular sequence of this clone aligns with the gene accession number as a point of reference only. However, individual transcript sequences of the same gene can differ through naturally occurring variations (e.g. polymorphisms), each with its own valid existence. This clone is substantially in agreement with the reference, but a complete review of all prevailing variants is recommended prior to use. [More info](#)

OTI Annotation: This clone was engineered to express the complete ORF with an expression tag. Expression varies depending on the nature of the gene.

Components:	The ORF clone is ion-exchange column purified and shipped in a 2D barcoded Matrix tube containing 10ug of transfection-ready, dried plasmid DNA (reconstitute with 100 ul of water).
Reconstitution Method:	<ol style="list-style-type: none">1. Centrifuge at 5,000xg for 5min.2. Carefully open the tube and add 100ul of sterile water to dissolve the DNA.3. Close the tube and incubate for 10 minutes at room temperature.4. Briefly vortex the tube and then do a quick spin (less than 5000xg) to concentrate the liquid at the bottom.5. Store the suspended plasmid at -20°C. The DNA is stable for at least one year from date of shipping when stored at -20°C.
RefSeq:	<u>NM_027872.4</u>
RefSeq Size:	2421 bp
RefSeq ORF:	1383 bp
Locus ID:	71706
UniProt ID:	<u>Q9DC26</u>
Cytogenetics:	5 G3