

Product datasheet for **MG207288**

Smtnl2 (NM_177776) Mouse Tagged ORF Clone

Product data:

Product Type:	Expression Plasmids
Product Name:	Smtnl2 (NM_177776) Mouse Tagged ORF Clone
Tag:	TurboGFP
Symbol:	Smtnl2
Synonyms:	D130058I21Rik
Mammalian Cell Selection:	Neomycin
Vector:	pCMV6-AC-GFP (PS100010)
E. coli Selection:	Ampicillin (100 ug/mL)



[View online »](#)

ORF Nucleotide Sequence:

>MG207288 representing NM_177776
 Red=Cloning site Blue=ORF Green=Tags(s)

TTTTGTAATACGACTCACTATAGGGCGGCCGGAATTCGTCGACTGGATCCGGTACCGAGGAGATCTGCC
 GCCCGCATCGCC

ATGGAGCCGTCACCGAGGAGGCGCACACAGTGGCGAGGCGCTGGGCCGTACGAGGCGGCGC
 TGGAGGGTGCGGTGCGTGCCTGCACGAGGACATGCAGGGGCTGCAGCGGGCGTGGAGCGGCGCTGGC
 AGAGGGCGTGCCTGGCCGGCCCTTGCTCGTACTGTGGCGAGCTGCAGCGGACAACCGAGGCGT
 CAGGCACAGCTCGAACGCTTGACGCGCCAGGTGGAGGCGCTGGGCTTGGCGACTGGAGTGTCCCCTGCAC
 CCGGCACGCCAGTCCCCTCCGGCGGCCACAGTTACCGACCGCGCCCCCGCTTGGGACTGCACGCTT
 CTCAGTCATGCCACCTTTTCGCTGTCCGGTGAAGCCCGAGCGTGAACATGATGAAGCCAGTGACCTT
 GAGGTGAGACGTCTCAAATTCATGCATCTTGGAGAACGGACACCAGCTGGATGCAGGTCCAGCCAACG
 GATCCTCTGAGGTCCAAACCTCGTCAGCCAGGAGCCCCGAGGCCACGCCCTGTGAGCCTCTCCTTGGC
 GATGCCCCACAGCCGTCACAGCTGTACCCGAGTCTCCGAGAAATTCCTGGGGAGACCTCAGCTTCA
 GCTCTGTACCCACATCTGCTGCCATTGTGGGGGGCTTACCCCAAGCCCTAGTAGGAGCCATCAGCCCTT
 GGACTCCAGTCCCACTGAGAAAAGTTCCTCTTCACTCGGTCTTGTCTGGCTCTGGGTATGGAGCAGT
 GACGGCTGGCAAACGCAAGGACAGCCCTCCACTGGTGACCCACACAGTACCCCATCCTCGCAGCCC
 CCAGCTATGACTCAGGCCCTCGCCAGGGAGAGCGTCGCAGGAACTGGTGAGGTGCAGACGCTGCCTC
 GGACTTCAGGGGCACAGGCTCGAAAGGCGCTGTTTGAAGTGGGAGCAGGATACGGCGAGCAAGGGCAA
 AGGTGAGACCAGGGCCAACTAAAAGGTCACAGATTTCCGTGTGGCCAGTGCCAGCAGCATCAAACAG
 ATCCTGCTAGAGTGGTGCCGAGCAAGACTGTGGGCTATCAGCACGTGGACCTGCAGAATTTCTCCTCCA
 GCTGGAGTGACGGCATGGCCTTCTGTGCCCTGGTGCACCTTCTCCCTGATGCCTTCGACTACAATGC
 CCTGAGTCCCACAAAAGGCAGAAGAAGTTCGAACTGGCCCTTACCATGGCTGAGAATCTGGCCAAGTGT
 GAGCGCCTCATTGAAGTGGAGGATATGATGGTGTGGGCCGAAGCCGGACCCCATGTGTGTCTTACCT
 ATGTGCAGTCGCTCTACAACCACCTTCGTCGCTTTGAG

ACGGTACGCGGCCGCTCGAG - GFP Tag - GTTTAA

Protein Sequence:

>MG207288 representing NM_177776
 Red=Cloning site Green=Tags(s)

MEPSPDAEEAHTVREALGRYEAALEGAVRALHEDMQGLQRGVERRVAEALRLAGPLARTVAELQRDNQRL
 QAQLERLTRQVEALGLATGVSPAPGTPSPPPAATVTDAPRLGTARFSSHATFSLSGRSPSVEHDEASDL
 EVRRASNSCILENGHQLDAGPANGSSEVQTSSAQEPPRPRVSLSLRMPHQPVTAVTRVSEKFSGETSAS
 ALSPTSAIVGGFTSPSEAI SPWTPSPTEKSSSFTRSLSGSGYGAVTAGKRKDSPLVTPPQSPSSQP
 PAMTQAPRQGERREL VRSQTLPRTSQAARKALFEKWEQDTASKGKGETRAKLKRSQSFVVASASSIKQ
 ILLEWCRSKTVGYQHVDLQNFSSWSGMAFCALVHSFFPDAFDYNALSPTQRQKNFELAFMAENLANC
 ERLIEVEDMMVMGRKPDPMCFTYVQSLYNHLRRFE

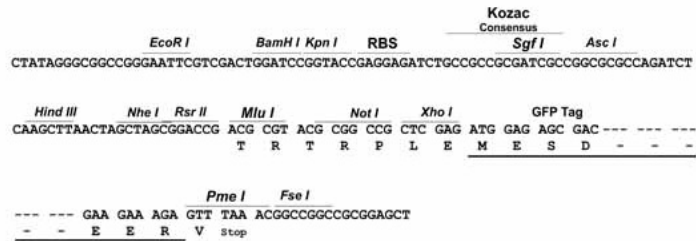
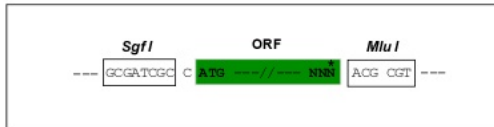
TRTRPLE - GFP Tag - V

Restriction Sites:

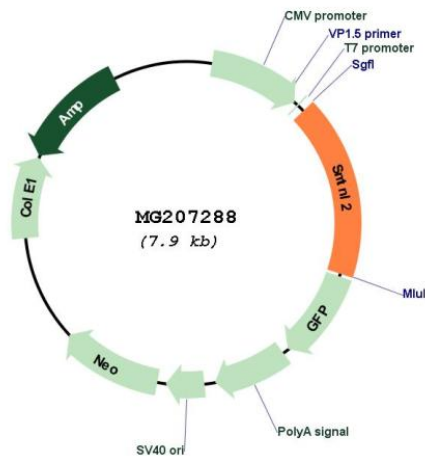
SgfI-MluI

Cloning Scheme:

Cloning sites used for ORF Shutting:



Plasmid Map:



ACCN: NM_177776

ORF Size: 1368 bp

OTI Disclaimer: The molecular sequence of this clone aligns with the gene accession number as a point of reference only. However, individual transcript sequences of the same gene can differ through naturally occurring variations (e.g. polymorphisms), each with its own valid existence. This clone is substantially in agreement with the reference, but a complete review of all prevailing variants is recommended prior to use. [More info](#)

OTI Annotation: This clone was engineered to express the complete ORF with an expression tag. Expression varies depending on the nature of the gene.

Components:	The ORF clone is ion-exchange column purified and shipped in a 2D barcoded Matrix tube containing 10ug of transfection-ready, dried plasmid DNA (reconstitute with 100 ul of water).
Reconstitution Method:	<ol style="list-style-type: none">1. Centrifuge at 5,000xg for 5min.2. Carefully open the tube and add 100ul of sterile water to dissolve the DNA.3. Close the tube and incubate for 10 minutes at room temperature.4. Briefly vortex the tube and then do a quick spin (less than 5000xg) to concentrate the liquid at the bottom.5. Store the suspended plasmid at -20°C. The DNA is stable for at least one year from date of shipping when stored at -20°C.
RefSeq:	<u>NM_177776.3</u> , <u>NP_808444.1</u>
RefSeq Size:	2624 bp
RefSeq ORF:	1371 bp
Locus ID:	276829
UniProt ID:	<u>Q8CI12</u>
Cytogenetics:	11 B4